

RELIABILITY IN ACTION



LINGONG HEAVY MACHINERY CO., LTD.

Address: No. 2676, Kejia Road, Jinan, Shandong, China
Email: sales@lgmg.com.cn
Tel: +86 531 6787 9283

LGMG Machinery Australia Pty Ltd
Address: 27 Broadhurst Road, Ingleburn, NSW 2565
Email: sales@lgmgau.com.au
Tel: +61 499 685 544

FOLLOW US:    

www.lgmgau.com.au

Please contact LGMG for more details.
LGMG reserves the right to change technical data without prior notice.
All photos and pictures in this brochure are for promotional purpose only.
This brochure comes into effect in August, 2025.
This brochure is only available in Australia.

Information of agent

LGMG

MOBILE ELEVATING WORK PLATFORMS



CONTENTS



P01

Contents

P02-06

Group Profile

P07-08

Scissor Lift Range (SS Series)

P09-14

Scissor Lift Range

P15-20

Vertical Mast Lift

P21-22

Crawler Scissor Lift

P23-26

Electric RT Scissor Lift

P27-30

Diesel RT Scissor Lift

P31-33

Electric Articulating Boom Lift

P34-36

Diesel Articulating Boom Lift

P37-42

Electric Telescopic Boom Lift

P43-48

Diesel Telescopic Boom Lift

P49-54

Telehandlers

P55-56

Diesel Rough Terrain Forklift

P57-58

Service & Application

GROUP PROFILE

Founded in 1972, Lingong Group is recognized as one of the top 100 enterprises in China's construction machinery industry and one of the five leading groups in this sector. Lingong Group consists of three core companies: Shandong Lingong Construction Machinery Co., Ltd. (SDLG), Lingong Heavy Machinery Co., Ltd. (LGMG), and Lingong Special Machinery Co., Ltd. The group's business portfolio spans five major areas: construction machinery, mining machinery, aerial work platforms, special machinery, and parts manufacturing.

Located in Jinan, Shandong Province, China, Lingong Heavy Machinery Co., Ltd. (LGMG) is a subsidiary of Lingong Group, with business sections covering aerial work platforms, telehandlers, and mining machinery, etc. LGMG has emerged as a significant player in China's construction machinery industry, ranking among the top 100 global construction machinery manufacturers, the top 30 in China, and the top 5 among Chinese manufacturers of aerial work platforms.

LGMG has established 100% owned subsidiaries in Europe, North America, Australia, Indonesia, Japan, and South Korea to provide better sales, service, and parts support for aerial work platforms and telehandlers to our customers.

In 2023, the construction of the LGMG global manufacturing base in Mexico was completed, and its official operation marks a significant milestone for LGMG in terms of overseas production.

With China and Mexico as its hubs and over 10 overseas subsidiaries as its cornerstones, LGMG is shaping a "Global Ecosystem Economy" model to achieve the localization of sales, R&D, manufacturing, and services overseas, thereby accelerating the pace of LGMG's global development.

PRODUCTION LINE



World-Leading Manufacturing Lines

The LGMG manufacturing base in China currently operates seven aerial work platform assembly lines, namely: three scissor lift production lines, one mast lift production line, one telescopic boom lift production line, one articulating boom lift production line, and one telehandler production line, with an annual capacity exceeding 60,000 units.

The LGMG Mexico production plant marks the company's first step into overseas manufacturing, with an annual capacity of 33,000 units. It has fully localized R&D, manufacturing, sales, service, and the supply chain for aerial work products, driving new momentum for global development.

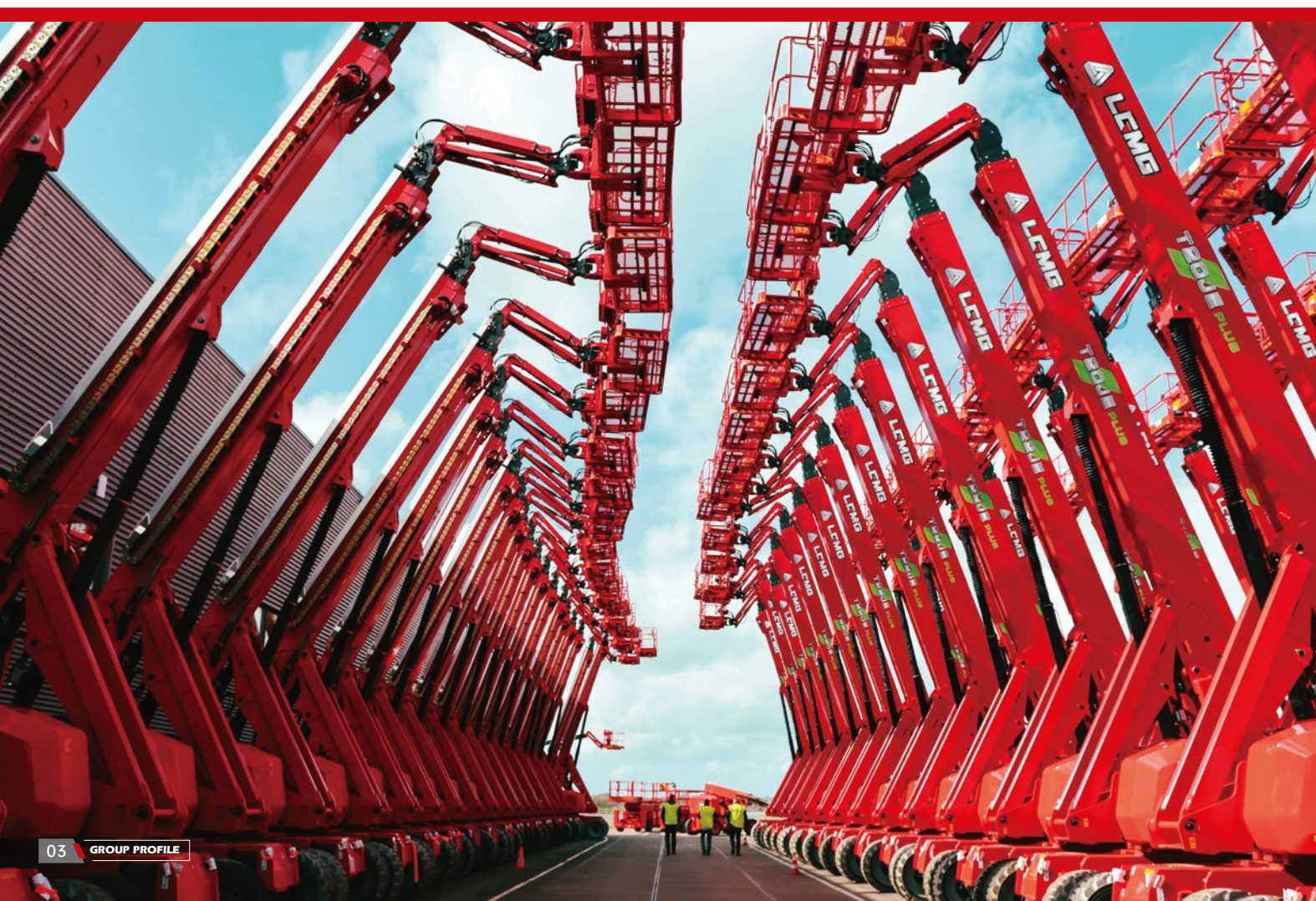
Strictly adhering to the six core principles of its Lean Production System (LPS), LGMG exercises tight control over every process from component welding and painting to machine assembly and final product inspection to maximize production efficiency and ensure high product quality.

R&D AND INNOVATION

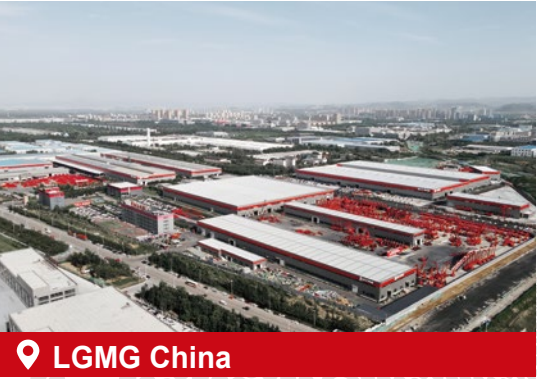
R&D and Innovation as the Core of Global Strategy

LGMG believes that R&D and innovation are key to sustainable business growth. The company has invested heavily in R&D and established a provincial-level innovation center responsible for new product development and component reliability testing. This initiative accelerates technological innovation and consistently enhances product quality. In addition, LGMG has collaborated with one of China's top universities to establish the LGMG Research Institute. The institute aims to address industry challenges, develop cutting-edge technologies, and nurture future technical talent for the aerial work platform industry.

Nowadays, electrification, digitalization, and intelligence have become focal points for industry development. LGMG has successively established R&D centers in countries such as Japan and Mexico to enable efficient collaboration between domestic and international teams, driving LGMG's technological advancements and product innovation in global markets.



GLOBAL SALES NETWORK



100+

COUNTRIES

2

FACTORIES

1000+

PARTNERS

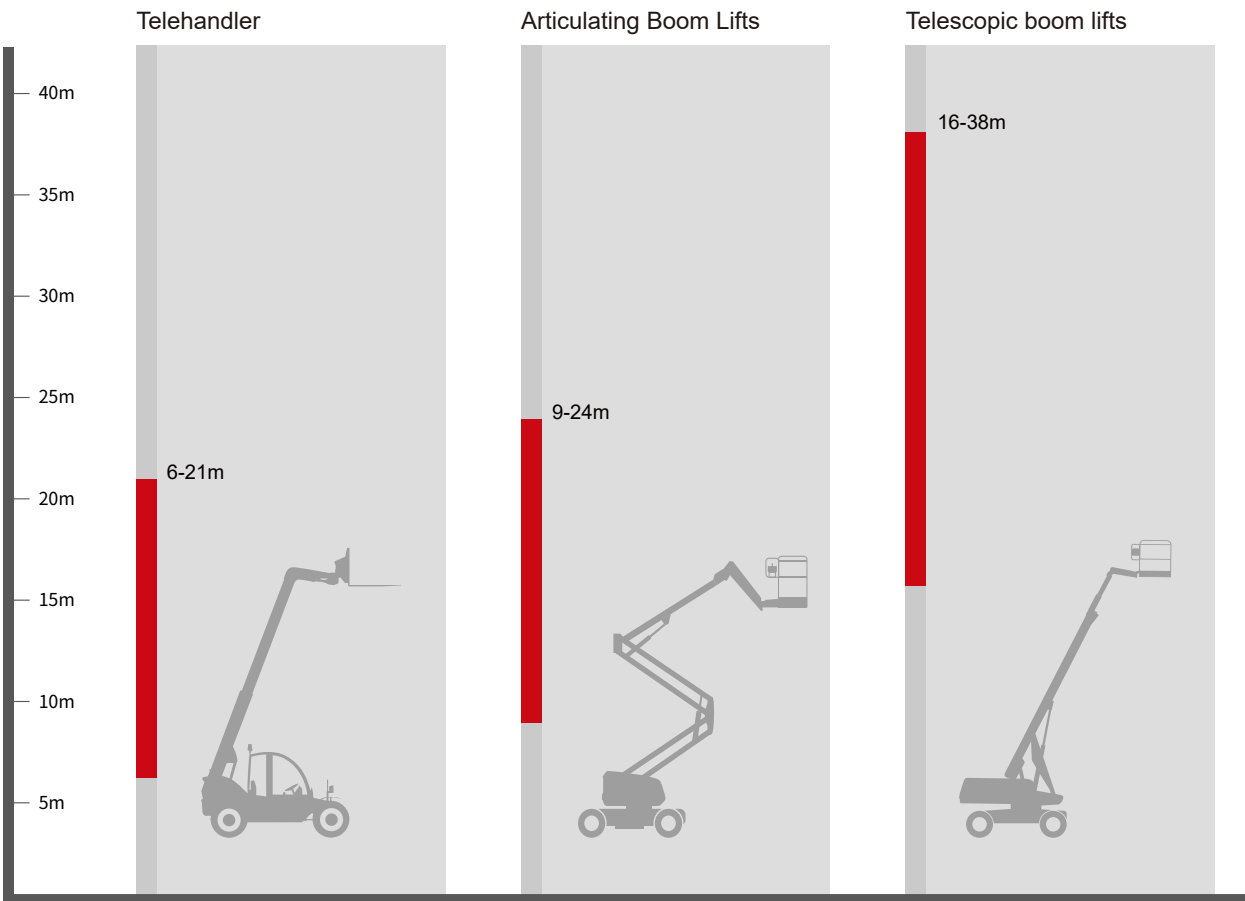
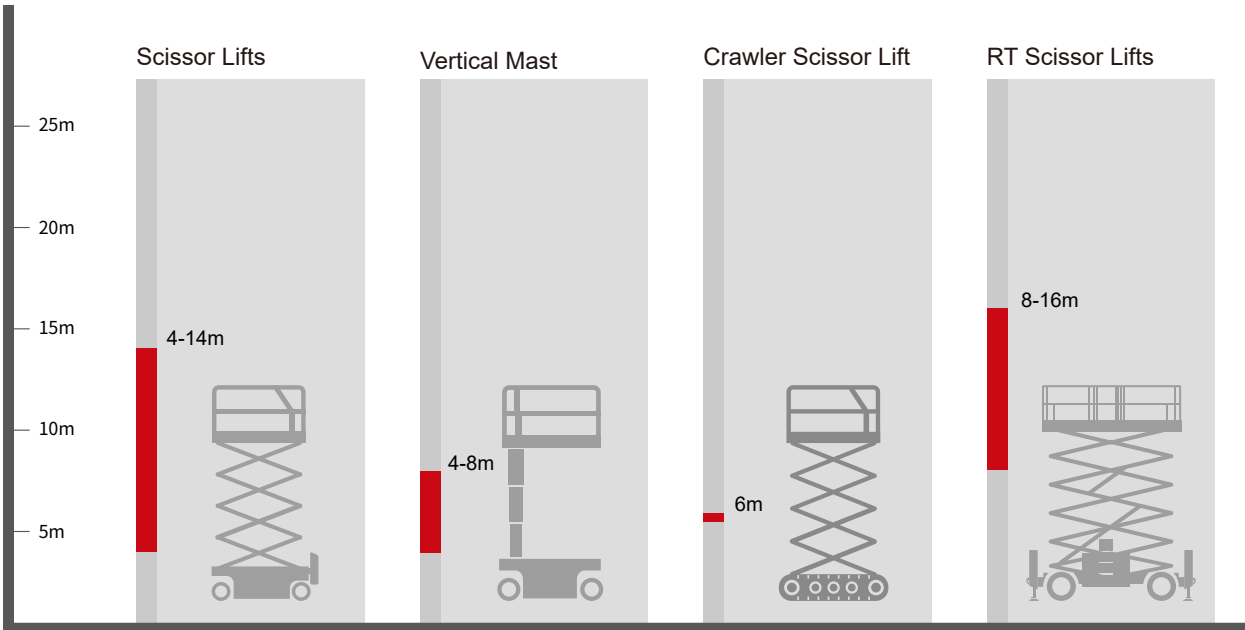
10+

SUBSIDIARIES

- LOCAL TEAM SUPPORT
- LOCAL MACHINE DELIVERY
- LOCAL SPARE PARTS
- LOCAL FAST AND HIGH-QUALITY SERVICE
- LOCAL TRAINING

LGMG products have obtained multiple international certifications, including CE, ANSI, Australian AS, CSA, KC, JIS, EAC and other major international standards. LGMG's products have been successfully sold to over 100 countries worldwide and have established long-term partnerships with more than 1000 partners, covering key markets such as the United States, Canada, the UK, Germany, the Netherlands, Italy, Spain, South Korea, and Japan.

PRODUCT RANGE



SCISSOR LIFT RANGE (SS SERIES)

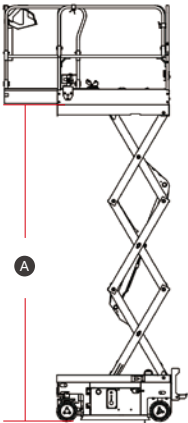
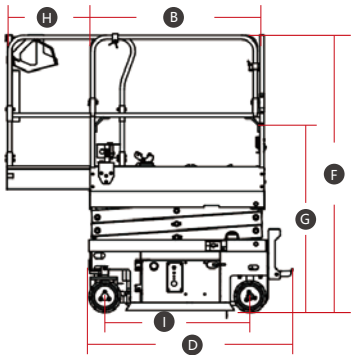
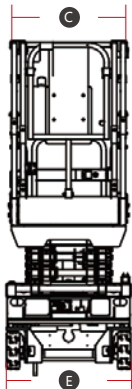
LGMG’s micro scissors are ideal solutions for the low-level access and space restricted application job sites. Shorten overall machine length, lighter weight and compact design make the machine suitable for most elevators.

- Battery powered, zero emission, and quiet drive make the machine environmentally friendly.
- Efficient electric drive system provides longer-lasting performance and better gradeability.
- Exceptional waterproofed drive system design provides excellent performance in wet conditions.



SPECIFICATIONS

MODELS	SS0407E (SS1230E)	
Measurements	Metric	Imperial
Work Height Max.	5.6m	18'4"
A Platform Height-Raised	3.6m	11'10"
B Platform Length	1.35m	4'5"
C Platform Width	0.7m	2'4"
D Overall Length	1.55m	5'1"
E Overall Width	0.76m	2'6"
F Overall Height-Rails Up	1.99m	6'6"
G Overall Height-Rails Down	1.65m	5'5"
H Extension Deck	0.6m	2'
I Wheelbase	1.12m	3'8"
Ground Clearance (Stowed/Raised)	50/16mm	2"/0.6"
PRODUCTIVITY		
Max. Platform Occupancy (In/Out)	2 / 1	2 / 1
Platform Capacity	240kg	530 lbs
Platform Capacity-Extension	113kg	249 lbs
Drive Height	Full Height	
Gradeability-Stowed	25%	
Turning Radius-Outside	1.5m	4'11"
Raise/Lower Speed	25s / 20s	
Brakes	Front-wheel Brake	
Drive Mode	4x2	
Tire Type	Solid Non-marking	
Tire Size	230x80mm	9"x3"
Ground Pressure, Tyres	602 kPa	87.3 psi
POWER		
Power Source	24V (2x12V),100Ah,AGM	
HYDRAULIC SYSTEM		
Hydraulic Oil Capacity	4.5L	1.2gal
WEIGHT		
Machine Weight	880kg	1,940 lbs





PART 2

SCISSOR LIFT RANGE



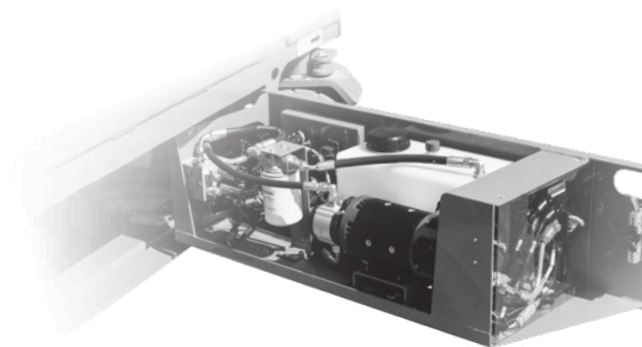
Entire range designed for indoor and outdoor use

- New LGMG scissor lifts are all indoor-outdoor models, allowing two people to work on the platform indoors and one person outdoors, which is more aligned with customer requirements and improves efficiency on work sites.



Large lower control panel

- The lower control panel utilises a large display, which makes troubleshooting easier and more convenient. Multi-level menu design, multi-language support, and Bluetooth modules are available as optional.



Easier maintenance

- Optimised design of internal components for a more rational arrangement and easier maintenance.



Universal key components

- The key components of the second-generation models such as joysticks, drive motors, motor controllers, and chargers are highly interchangeable with existing models on the market, making it easy to replace them quickly and efficiently, to save costs for daily operation and maintenance.



SPECIFICATIONS

MODELS	S0607EII (S1932EII)		S0808EII (S2632EII)		S0812EII (S2646EII)	
Measurements	Metric	Imperial	Metric	Imperial	Metric	Imperial
Work Height Max.	7.8m	25'7"	9.8/8m (in / out)	32'2"/26'3" (in / out)	10m	32'10"
A Platform Height-Raised	5.8m	19'	7.8/6m (in / out)	25'7"/19'8" (in / out)	8m	26'3"
B Platform Length	1.64m	5'5"	2.26m	7'5"	2.26m	7'5"
C Platform Width	0.73m	2'5"	0.79m	2'7"	1.12m	3'8"
D Overall Length	1.83m	6'	2.44m	8'	2.49m	8'2"
E Overall Width	0.79m	2'7"	0.83m	2'9"	1.18m	3'10"
F Overall Height-Guardrails Up	2.15m	7'1"	2.28m	7'6"	2.36m	7'9"
G Overall Height-Guardrails Down	1.99m	6'6"	1.9m	6'3"	1.55m	5'1"
H Extension Deck	0.9m	2'11"	0.9m	2'11"	0.9m	2'11"
I Wheelbase	1.35m	4'5"	1.85m	6'1"	1.85m	6'1"
Ground Clearance (Stowed/Raised)	77/26mm	3"/1"	100/20mm	4"/1"	100/20mm	4"/1"
PRODUCTIVITY						
Max. Platform Occupancy	2 (in) / 1 (out)		2 (in) / 1 (out)		2 (in) / 1 (out)	
Platform Capacity	230kg	507 lbs	230kg	507lbs	450kg	992 lbs
Platform Capacity-Extension Deck	120kg	265 lbs	120kg	265 lbs	120kg	265 lbs
Drive Height	Full Height					
Gradeability-Stowed	25%		25%		25%	
Min. Turning Radius	1.8m	5'11"	2.2m	7'3"	2.45m	8'
Raise/Lower Speed	16s / 28s		31s / 40s		35s / 40s	
Brakes	Front-wheel Brake					
Drive Mode	4x2		4x2		4x2	
Tire Type	Solid Non-marking					
Tire Size	323x100mm	12"x4"	380x130mm	15"x5"	380x130mm	15"x5"
Ground Pressure, Tyres	978 kPa	141.8 psi	1,002 kPa	145.3 psi	1,154 kPa	167.4 psi
POWER						
Power Source	24V (4x6V),185Ah,AGM		24V (4x6V),185Ah,AGM		24V (4x6V),226Ah,AGM	
HYDRAULIC SYSTEM						
Hydraulic Oil Capacity	5L	1.3gal	13L	3.4gal	16L	4.2gal
WEIGHT						
Machine Weight	1,610kg	3,549 lbs	2,200kg	4,850 lbs	2,318kg	5,110 lbs

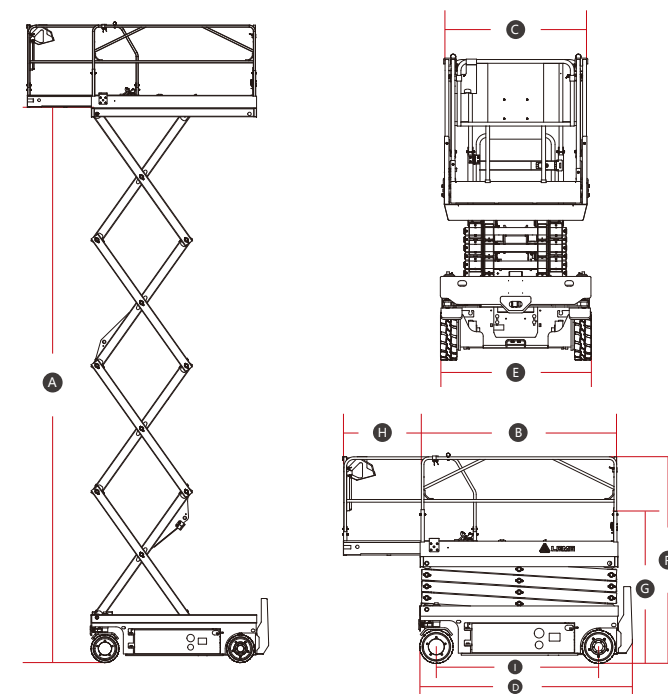
SPECIFICATIONS

MODELS	S1012EII (S3246EII)		S1212EII (S4046EII)		S1413EII (S4650EII)	
Measurements	Metric	Imperial	Metric	Imperial	Metric	Imperial
Work Height Max.	12m	39'4"	14/9.5m (in / out)	45'11"/31'2" (in / out)	15.8/10m (in / out)	51'10"/32'9" (in / out)
A Platform Height-Raised	10m	32'10"	12/7.5m (in / out)	39'4"/24'7" (in / out)	13.8/8m (in / out)	45'3"/26'3" (in / out)
B Platform Length	2.26m	7'5"	2.26m	7'5"	2.64m	8'8"
C Platform Width	1.12m	3'8"	1.12m	3'8"	1.12m	3'8"
D Overall Length	2.49m	8'2"	2.49m	8'2"	2.8m	9'2"
E Overall Width	1.18m	3'10"	1.18m	3'10"	1.3m	4'3"
F Overall Height-Guardrails Up	2.49m	8'2"	2.63m	8'8"	2.74m	9'
G Overall Height-Guardrails Down	1.68m	5'6"	1.8m	5'11"	1.94m	6'4"
H Extension Deck	0.9m	2'11"	0.9m	2'11"	0.9m	2'11"
I Wheelbase	1.85m	6'1"	1.85m	6'1"	2.22m	7'3"
Ground Clearance (Stowed/Raised)	100/20mm	4"/1"	100/20mm	4"/1"	105/20mm	4"/1"
PRODUCTIVITY						
Max. Platform Occupancy	2 (in) / 1 (out)		2 (in) / 1 (out)		2 (in) / 1 (out)	
Platform Capacity	320kg	705 lbs	320kg	705 lbs	320kg	705 lbs
Platform Capacity-Extension Deck	120kg	265 lbs	120kg	265 lbs	120kg	265 lbs
Drive Height	Full Height					
Gradeability-Stowed	25%		25%		25%	
Min. Turning Radius	2.45m	8'	2.45m	8'	2.85m	9'4"
Raise/Lower Speed	58s / 48s		65s / 60s		80s / 65s	
Brakes	Front-wheel Brake					
Drive Mode	4x2		4x2		4x2	
Tire Type	Solid Non-marking					
Tire Size	380x130mm	15"x5"	380x130mm	15"x5"	380x130mm	15"x5"
Ground Pressure, Tyres	1,355 kPa	196.5 psi	1,277 kPa	185.2 psi	1,378 kPa	199.9 psi
POWER						
Power Source	24V (4x6V),226Ah,AGM		24V (4x6V),226Ah,AGM		24V (2x12V),280Ah,AGM	
HYDRAULIC SYSTEM						
Hydraulic Oil Capacity	23L	6.1gal	23L	6.1gal	25.5L	6.7gal
WEIGHT						
Machine Weight	2,995kg	6,603 lbs	2,970kg	6,548 lbs	3,500kg	7,716 lbs



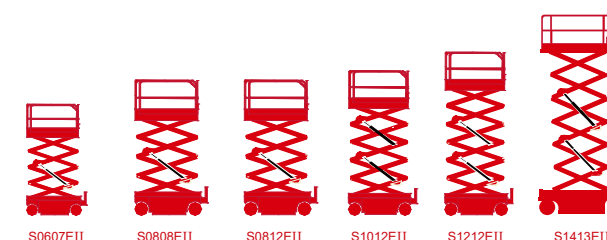
STANDARD FEATURES

- Proportional control
- Double height guardrail
- Manual brake release
- Emergency descent
- Pothole guard
- Self-lock entry gate
- All motions alarm
- Full-height drive
- Indoor and outdoor rated
- Emergency stop device
- Swing-out component tray
- Tilt alarm with lift cut-out
- Overload sensing system
- Descent alarm with flashing beacon
- Intelligent diagnostic system
- Maintenance-free battery
- Solid non-marking tires



OPTIONAL

- AC power to platform
- Voice alarm system
- Telematics
- Anti-collision protection
- Biodegradable hydraulic oil
- Battery isolator switch (double pole)
- White noise alarm (squawker)
- AGM battery
- Crush protection system
- Wheel nut indicator
- Perimeter laser



PART 3

VERTICAL MAST LIFT



M0407TE/M0608TE

LGMG's vertical mast lifts feature compact size and high maneuverability, providing excellent agility and convenience in constricted areas.

- With narrow chassis and low stowed height, the machine can be transported easily through doorways and in passenger elevators.
- Small inside turning radius allows for flexible use in narrow spaces, improving work efficiency.
- One-side extension deck enlarges the working scope and enhances productivity.

SPECIFICATIONS

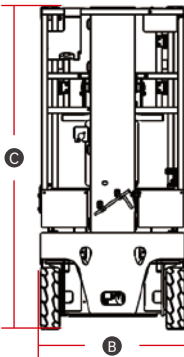
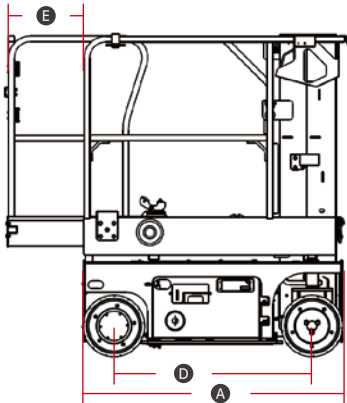
MODELS	M0407TE (M1230TE)		M0608TE (M1932TE)	
Measurements	Metric	Imperial	Metric	Imperial
Working Height Max.	5.7m	18'8"	7.6/6.2m in/out	24'11"/20'4" in/out
Platform Height	3.7m	12'2"	5.6/4.2m in/out	18'4"/13'9" in/out
Platform Size	1.33x0.75m	52"x30"	0.98x0.76m	39"x30"
A Overall Length	1.39m	4'7"	1.4m	4'7"
B Overall Width	0.76m	2'6"	0.79m	2'7"
C Overall Height (Stowed)	1.69m	5'6"	1.99m	6'6"
D Wheelbase	1.04m	3'5"	1.15m	3'9"
E Extension Deck	0.4m	1'4"	0.5m	1'8"
Ground Clearance (Stowed)	68mm	3"	68mm	3"
PRODUCTIVITY				
Max. Platform Occupancy	1 (in) / 0 (out)		1(in) / 1(out)	
Platform Capacity	230kg	507 lbs	200kg	441 lbs
Platform Capacity-Extension Deck	113kg	249 lbs	113kg	249 lbs
Drive Mode	Front wheel drive		Rear wheels drive	
Drive speed (Stowed)	4km/h	2.5mph	4km/h	2.5mph
Drive speed (Raised)	0.5km/h	0.31mph	0.5km/h	0.31mph
Gradeability	25%		25%	
Tire size	323x100mm	13"x4"	250x80mm	10"x3"
POWER				
Power Source	24V (2x12V),145Ah,AGM		24V (2x12V),145Ah,AGM	
HYDRAULIC SYSTEM				
Hydraulic Oil Capacity	5.5L	1.5gal	4.5L	1.2 gal
WEIGHT				
Machine Weight	840kg	1,852 lbs	1,150kg	2,535 lbs

STANDARD FEATURES

- Proportional control
- Horn/Hour meter
- Emergency stop device
- Full-height drive
- All motions alarm
- Charge protection system
- Manual emergency pump
- Brake release
- Emergency descent
- Tilt alarm
- Descent alarm with flashing beacon
- Telematics connector
- Solid non-marking tires

OPTIONS

- AC power to platform
- Telematics
- Anti-collision protection
- Biodegradable hydraulic oil
- Battery isolator switch (double pole)
- White noise alarm (squawkers)





M0810JE

LGMG's vertical mast lifts with a jib are designed to offer excellent barrier-crossing capability, allowing them to reach difficult areas in tight or confined spaces.

- Indoor and outdoor use, adaptable to diverse job sites.
- Compact size, easy to operate and transport.
- Equipped with a maintenance free AC drive motor to improve efficiency.
- Intelligent self-diagnostic system for quick troubleshooting.
- GPS installation for machine positioning and data access.

SPECIFICATIONS

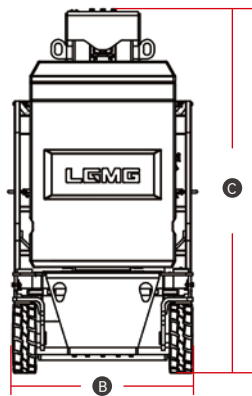
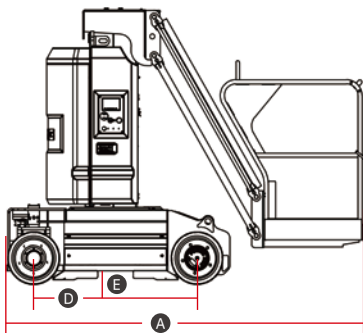
MODELS	M0810JE (M2640JE)	
Measurements	Metric	Imperial
Working Height Max.	10m	32'10"
Platform Height (Raised)	8m	26'3"
Horizontal Outreach	3.2m	10'6"
Up and Over Clearance Max.	6.6m	21'8"
Platform Size (L×W)	0.98x0.72m	39"x28"
A Overall Length	2.6m	8'6"
B Overall Width	1m	3'3"
C Overall Height (Stowed)	1.99m	6'6"
D Wheelbase	1.2m	3'11"
E Ground Clearance	0.1m	4"
PRODUCTIVITY		
Max. Platform Occupancy	2 (in) / 1 (out)	
Platform Capacity	200kg	440 lbs
Drive Mode	Rear-wheels Drive	
Brakes	Rear-wheel Brake	
Turntable Rotation	345°	
Max. Drive Speed (Stowed)	3.5km/h	2.2mph
Max. Drive Speed (Raised)	0.43km/h	0.27mph
Gradeability	25%	
Tailswing	0	
Tire Size	380x130mm	15"x5"
Ground Pressure, Tyres	1,353 kPa	196.2 psi
POWER		
Power Source	24V,250Ah,FLA	
HYDRAULIC SYSTEM		
Hydraulic Oil Capacity	6.5L	1.7gal
WEIGHT		
Machine Weight	2,720kg	5,997 lbs

STANDARD FEATURES

- Proportional control
- Horn/Hour meter
- Emergency stop device
- Full-height drive
- All motions alarm
- Charge protection system
- Manual emergency pump
- Brake release
- Emergency descent
- Tilt alarm
- Descent alarm with flashing beacon
- Telematics connector
- Solid non-marking tires

OPTIONS

- AC power to platform
- Telematics
- Anti-collision protection
- Biodegradable hydraulic oil
- Battery isolator switch (double pole)
- White noise alarm (squawkers)





M0607SE

LGMG’s vertical mast lifts feature compact size and high maneuverability, providing excellent agility and convenience at constricted areas.

- With light weight and compact size, it can be used both indoor and outdoor.
- Self-leveling chain system ensures even stress, and each mast can rise and fall synchronously.
- Hinged double opening cover for easier maintenance.
- Standard with 0.5m extension deck and large working capacity.

SPECIFICATIONS

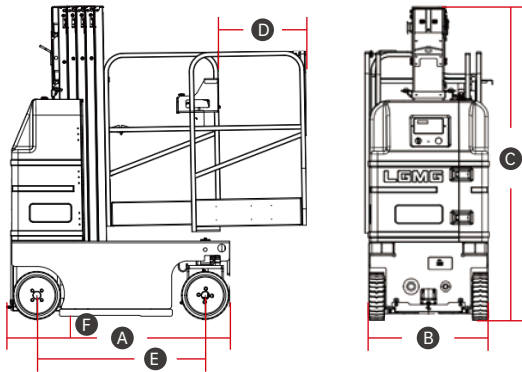
MODELS	M0607SE	
Measurements	Metric	Imperial
Working Height Max.	8m/6.8m (in / out)	26'3"/22'4" (in / out)
Platform Height	6m/4.8m (in / out)	19'8"/15'9" (in / out)
Platform Size	0.79x0.75m	31"x30"
A Overall Length	1.4m	4'7"
B Overall Width	0.76m	2'6"
C Overall Height (Stowed)	1.99m	6'6"
D Wheelbase	0.5m	1'8"
E Extension Deck	1.07m	3'6"
Ground Clearance (Stowed)	55mm	2"
PRODUCTIVITY		
Max. Platform Occupancy	1(in) / 1(out)	
Platform Capacity	160kg	352 lbs
Platform Capacity-Extension Deck	160kg	352 lbs
Drive Mode	Front-wheels Brake	
Drive speed (Stowed)	3km/h	1.9mph
Drive speed (Raised)	0.8km/h	0.5mph
Gradeability	25%	
Tire size	305x100mm	12"x4"
POWER		
Power Source	24V (2x12V),100Ah,AGM	
HYDRAULIC SYSTEM		
Hydraulic Oil Capacity	5L	1.3gal
WEIGHT		
Machine Weight	1,170kg	2,579 lbs

STANDARD FEATURES

- Proportional controls
- Emergency stop device
- Horn/Hour meter
- Manual brake release
- Bottom oil tray
- Charging protection system
- Emergency descent
- Descent alarm with flashing beacon
- Pothole guard
- Front wheel brake
- Full-height drive
- Front wheel steering, front wheel drive
- Tilt alarm
- Telematics connector
- Maintenance-free battery
- Solid non-marking tires
- AC power to platform

OPTIONS

- Telematics
- Anti-collision protection
- Biodegradable hydraulic oil
- Battery isolator switch (double pole)
- White noise alarm (squawkers)
- Platform tool box



CRAWLER SCISSOR LIFTS

LGMG's crawler scissor lift excels in challenging any complex environments, offering outstanding performance on slopes and uneven ground.

- With a compact size and the ability to turn 360 degrees on the spot, the machine is highly maneuverable, allowing for precise operation in narrow space.
- The crawler chassis has a large contact area with ground to provide superior obstacle-surpassing capabilities while maintaining smooth operation and stability.
- The innovative crawler design allows a uniform distribution of total weight to lower ground pressure and prevent damage.
- Hydraulic outriggers deliver a better solution on uneven ground.



SPECIFICATIONS

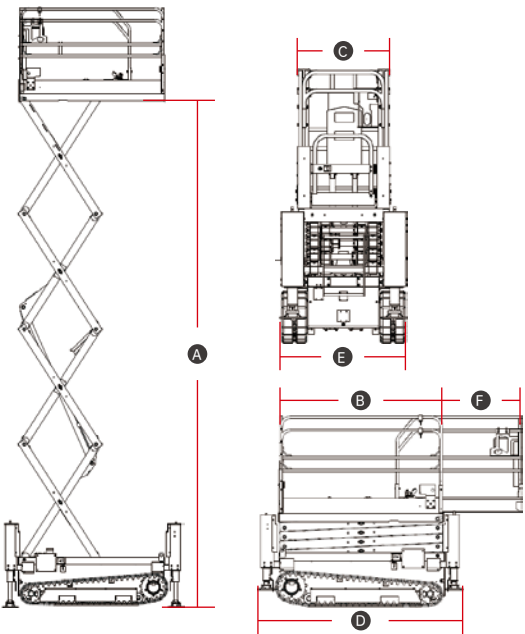
MODELS	SC0610E-2 (SC2240E-2)	
Measurements	Metric	Imperial
Work Height Max.	8.8m/7.5m (in/out)	28'10"/24'7" (in/out)
A Platform Height - Raised	6.8m/5.5m (in/out)	22'4"/18'1" (in/out)
B Platform Length	1.895m	6'3"
C Platform Width	0.73m	2'5"
D Overall Length	2.281m	7'6"
E Overall Width	0.996m	3'3"
Overall Height - Guardrails Up	2.192m	7'3"
F Extension Deck	0.9m	2'11"
Ground Clearance	0.115m	5"
PRODUCTIVITY		
Max. Platform Occupancy	2 (in) / 1 (out)	
Platform Capacity	250kg	551 lbs
Platform Capacity - Extension Deck	120kg	265 lbs
Gradeability-Stowed	30%	
Raise/Lower Speed	36s / 36s	
POWER		
Power Source	24V(4x6V), 200Ah, AGM	
HYDRAULIC SYSTEM		
Hydraulic Oil Capacity	5.5L	1.45gal
WEIGHT		
Machine Weight	1,600kg	3,527 lbs

STANDARD FEATURES

- Proportional controls
- Emergency stop device
- Emergency descent
- Self-lock entry gate
- Tilt alarm with lift cut-out
- Overload sensing system
- Descent alarm with flashing beacon
- All motions alarm
- Intelligent diagnostic system
- Foldable ladder
- Non-marking crawlers
- Maintenance-free battery
- Hydraulic outriggers
- AC power to platform

OPTIONS

- Voice alarm system
- Telematics
- Anti-collision protection
- Biodegradable hydraulic oil
- Battery isolator switch (double pole)
- White noise alarm (squawkers)



PART 5

ELECTRIC RT SCISSOR LIFT



- The large platform with high capacity maximises productivity.
- Battery powered, zero emission and quiet drive mean this machine is environmentally friendly.
- Equipped with oscillating axles that provide excellent performance in soft and rough terrain conditions.
- Hydraulic outriggers deliver a better solution on uneven ground.
- Intelligent self-diagnostic system for quick troubleshooting.

SPECIFICATIONS

MODELS	SR0818E (SR2669E)		SR1018E (SR3369E)		SR1218E (SR4069E)		SR1418E (SR4669E)	
Measurements	Metric	Imperial	Metric	Imperial	Metric	Imperial	Metric	Imperial
Work Height Max.	9.7m	31'10"	11.7m	38'5"	13.9m	45'7"	15.8m	51'10"
A Platform Height-Raised	7.7m	25'3"	9.7m	31'10"	11.9m	39'	13.8m	45'3"
B Platform Height-Stowed	1.48m	4'10"	1.45m	4'9"	1.6m	5'3"	1.8m	5'11"
C Platform Length	2.79m	9'2"	2.79m	9'2"	2.79m	9'2"	2.79m	9'2"
D Platform Width	1.6m	5'3"	1.6m	5'3"	1.6m	5'3"	1.6m	5'3"
E Overall Length	3.76m	12'4"	3.76m	12'4"	3.76m	12'4"	3.73m	12'3"
F Overall Width	1.79m	5'10"	1.79m	5'10"	1.79m	5'10"	1.84m	6'
G Overall Height-Rails up	2.58m	8'6"	2.55m	8'4"	2.7m	8'10"	2.9m	9'6"
Overall Height-Rails down	1.92m	6'4"	1.89m	6'2"	2.04m	6'8"	2.24m	7'4"
Extension Deck	1.52m	5'	1.52m	5'	1.52m	5'	1.5m	4'11"
H Wheelbase	2.29m	7'6"	2.29m	7'6"	2.29m	7'6"	2.29m	7'6"
Ground Clearance-Center	0.23m	9"	0.23m	9"	0.23m	9"	0.23m	9"
PRODUCTIVITY								
Max. Platform Occupancy (In/Out)	4 / 4		4 / 2		3 / 2		2 / 2	
Platform Capacity	680kg	1,499 lbs	454kg	1,001 lbs	365kg	805 lbs	365kg	805 lbs
Platform Capacity-Extension	140kg	310 lbs	140kg	310 lbs	140kg	310 lbs	140kg	310 lbs
Drive Height	Full Height		Full Height		Full Height		Full Height	
Gradeability-Stowed	40%	40%	35%	35%	35%	35%	35%	35%
Min. Turning Radius	4.75m	15'7"	4.75m	15'7"	4.75m	15'7"	4.75m	15'7"
Raise/Lower Speed	35s / 30s		39s / 46s		61s / 55s		80s / 60s	
Brakes	Rear-wheel Brake		Rear-wheel Brake		Rear-wheel Brake		Rear-wheel Brake	
Drive Mode	4x2		4x2		4x2		4x2	
Tire Type	Foam-filled Non-marking		Foam-filled Non-marking		Foam-filled Non-marking		Solid Non-marking	
Tire Size	663x283mm	26"x11"	663x283mm	26"x11"	663x283mm	26"x11"	663x283mm	26"x11"
Ground Pressure, Tyres	492.07 kPa	71.4 psi	526.37 kPa	76.3 psi	577.09 kPa	83.7 psi	651.95 kPa	94.6 psi
POWER								
Power Source	48V DC (8x6V),315Ah,FLA		48V DC (8x6V),315Ah,FLA		48V DC (8x6V),315Ah,FLA		48V DC (8x6V),390Ah,FLA	
HYDRAULIC SYSTEM								
Hydraulic Oil Volume	50L	13.21gal	70L	18.5gal	70L	18.5gal	50L	13.2gal
WEIGHT								
Machine Weight	4,190kg	9,237 lbs	4,350kg	9,570 lbs	5,100kg	11,245 lbs	6,260kg	13,800 lbs

SPECIFICATIONS

MODELS	SR1023E (SR3390E)		SR1323E (SR4390E)		SR1623E(SR5390E)	
Measurements	Metric	Imperial	Metric	Imperial	Metric	Imperial
Work Height Max.	12m	39'4"	15m	49'3"	17.9m	58'9"
<div>A</div> Platform Height-Raised	10m	32'10"	13m	42'8"	15.9m	52'2"
<div>B</div> Platform Height-Stowed	1.69m	5'7"	1.91m	6'3"	2.13m	7'
<div>C</div> Platform Length	4.81m	15'9"	4.81m	15'9"	4.81m	15'9"
<div>D</div> Platform Width	1.83m	6'	1.83m	6'	1.83m	6'
<div>E</div> Overall Length	4.9m	16'1"	4.9m	16'1"	4.9m	16'1"
<div>F</div> Overall Width	2.3m	7'7"	2.3m	7'7"	2.3m	7'7"
<div>G</div> Overall Height-Rails up	2.79m	9'2"	3.01m	9'11"	3.23m	10'7"
Overall Height-Rails down	2.19m	7'2"	2.31m	7'7"	2.53m	8'4"
Extension Deck	1.45/1.14m	4'9"/3'9"	1.45/1.14m	4'9"/3'9"	1.45/1.14m	4'9"/3'9"
<div>H</div> Wheelbase	2.85m	9'4"	2.85m	9'4"	2.85m	9'4"
Ground Clearance-Center	0.26m	10"	0.26m	10"	0.26m	10"
PRODUCTIVITY						
Max. Platform Occupancy(In/Out)	7 / 7		5 / 5		4 / 4	
Platform Capacity	1,100kg	1,499 lbs	680kg	1,500 lbs	680kg	1,499 lbs
Platform Capacity-Extension	230kg	510 lbs	230kg	510 lbs	230kg	510 lbs
Drive Height	Full Height		Full Height		8.5m	27'11"
Gradeability-Stowed	40%	40%	40%	40%	40%	40%
Min. Turning Radius	6.57m	21'7"	6.57m	21'7"	6.57m	21'7"
Raise/Lower Speed	60s / 50s		60s / 50s		70s / 50s	
Brakes	Four-wheel Brake		Four-wheel Brake		Four-wheel Brake	
Drive Mode	4x4		4x4		4x4	
Tire Type	Solid Non-marking		Solid Non-marking		Solid Non-marking	
Tire Size	835x290mm	33"x11"	835x290mm	33"x11"	835x290mm	33"x11"
Ground Pressure, Tyres	887.37 kPa	128.7 psi	887.71 kPa	128.8 psi	888.31 kPa	128.8 psi
POWER						
Power Source	80V 228Ah		80V 228Ah		80V 228Ah	
HYDRAULIC SYSTEM						
Hydraulic Oil Volume	80L	21.1gal	80L	21.1gal	80L	21.1gal
WEIGHT						
Machine Weight	6,980kg	15,400 lbs	7,460kg	16,450 lbs	8,300kg	18,298 lbs

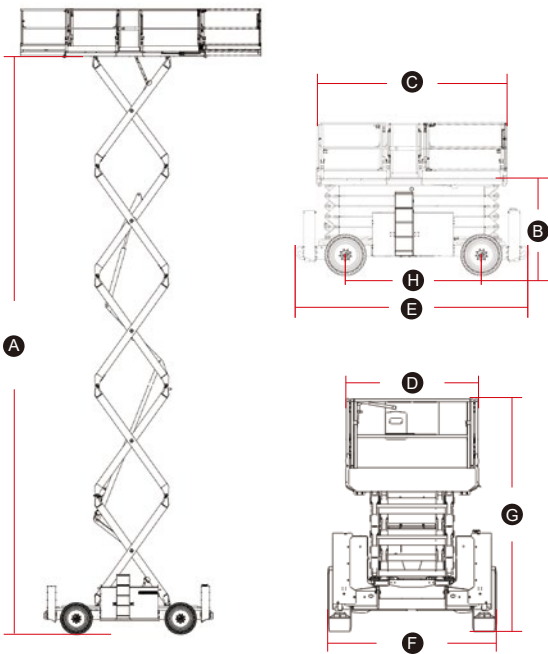
STANDARD FEATURES

- Proportional control
- Foldable guardrail
- Emergency stop device
- Manual brake release
- Emergency descent
- Oscillating axle
- Self-lock entry gate
- Tilt alarm with lift cut-out
- Overload sensing system
- Descent alarm with flashing beacon
- All motions alarm
- Intelligent diagnostic system
- AC power to platform
- Battery Isolation
- White noise alarm (squawkers)
- Non-marking tyres
- LED lights

OPTIONAL

- Telematics
- Foam-filled tires
- Solid tires
- Pipe racks
- Biodegradable hydraulic oil
- Fire extinguisher bracket
- Wheel chocks
- Nut indicators
- Crush protection system
- High visibility tape
- Pulley generator
- Hydraulic generator

MACHINE SIZE





- Larger work platform with high capacity offers great productivity.
- Powerful diesel engine, oscillating axels and four-wheel drive provide better performance on most rough terrain job sites.
- The overload system and motion alarm help the operator to complete the job in a much safer way.
- Pull-out engine tray for easy access and maintenance.
- On-board self-diagnosis system makes it easier for quick troubleshooting.

SPECIFICATIONS

MODELS	SR0818D (SR2669D)		SR1018D (SR3369D)		SR1218D (SR4069D)	
Measurements	Metric	Imperial	Metric	Imperial	Metric	Imperial
Work Height Max.	9.7m	31'10"	11.7m	38'5"	13.9m	45'7"
A Platform Height-Raised	7.7m	25'3"	9.7m	31'10"	11.9m	39'1"
B Platform Height-Stowed	1.48m	4'10"	1.45m	4'9"	1.6m	5'3"
C Platform Length	2.79m	9'2"	2.79m	9'2"	2.79m	9'2"
D Platform Width	1.6m	5'3"	1.6m	5'3"	1.6m	5'3"
E Overall Length	3.76m	12'4"	3.76m	12'4"	3.76m	12'4"
F Overall Width	1.79m	5'10"	1.79m	5'10"	1.79m	5'10"
G Overall Height-Rails up	2.58m	8'6"	2.55m	8'4"	2.7m	8'10"
Overall Height-Rails down	1.92m	6'4"	1.89m	6'2"	2.04m	6'8"
Extension Deck	1.52m	5'	1.52m	5'	1.52m	5'
H Wheelbase	2.29m	7'6"	2.29m	7'6"	2.29m	7'6"
Ground Clearance-Center	0.23m	9"	0.23m	9"	0.23m	9"
PRODUCTIVITY						
Max. Platform Occupancy(in/out)	4 / 4		4 / 2		3 / 2	
Platform Capacity	680kg	1,499 lbs	454kg	1,000 lbs	365kg	805 lbs
Platform Capacity-Extension	140kg	310 lbs	140kg	310 lbs	140kg	310 lbs
Drive Height	Full Height		Full Height		Full Height	
Gradeability-Stowed	40%	40%	35%	35%	35%	35%
Min. Turning Radius	4.75m	15'7"	4.75m	15'7"	4.75m	15'7"
Raise/Lower Speed	35s / 30s		39s / 46s		61s / 55s	
Brakes	Four-wheel Brake		Four-wheel Brake		Four-wheel Brake	
Drive Mode	4x4		4x4		4x4	
Tire Type	Foam-filled Non-marking		Foam-filled Non-marking		Foam-filled Non-marking	
Tire Size	663x283mm	26"x11"	663x283mm	26"x11"	663x283mm	26"x11"
Ground Pressure, Tyres	490.41 kPa	71.1 psi	524.48 kPa	76.1 psi	575.46 kPa	83.5 psi
POWER						
Power Source	Kubota 18.5kW/24.8hp		Kubota 18.5kW/24.8hp		Kubota 18.5kW/24.8hp	
Fuel Tank Capacity	53L	14gal	53L	14gal	53L	14gal
HYDRAULIC SYSTEM						
Hydraulic Oil Volume	50L	13.2gal	50L	13.2gal	50L	13.2gal
WEIGHT						
Machine Weight	4,170kg	9,193 lbs	4,330kg	9,545 lbs	5,080kg	11,200 lbs

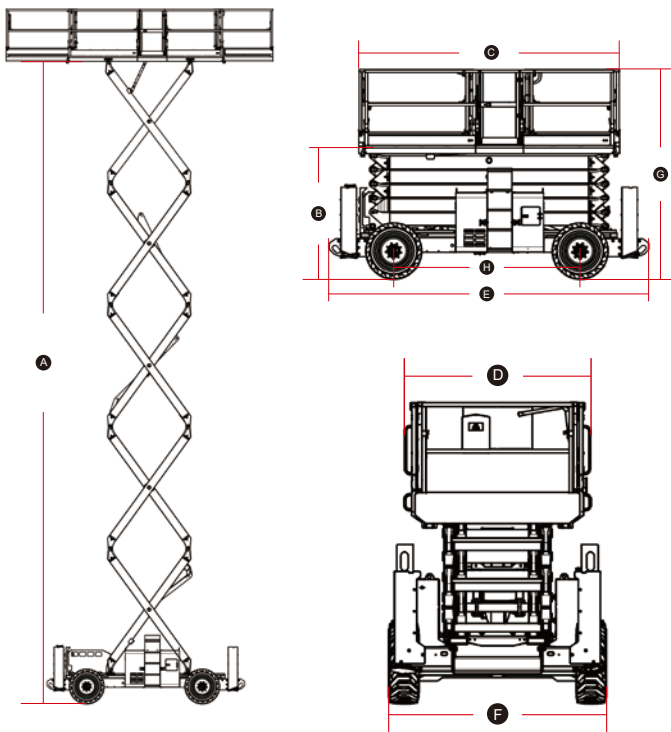
SPECIFICATIONS

MODELS	SR1023D (SR3390D)		SR1323D (SR4390D)		SR1623D (SR5390D)	
Measurements	Metric	Imperial	Metric	Imperial	Metric	Imperial
Work Height Max.	12m	39'4"	15m	49'3"	17.9m	58'9"
A Platform Height-Raised	10m	32'10"	13m	42'8"	15.9m	52'2"
B Platform Height-Stowed	1.64m	5'5"	1.86m	6'1"	2.08m	6'10"
C Platform Length	4.81m	15'9"	4.81m	15'9"	4.81m	15'9"
D Platform Width	1.83m	6'	1.83m	6'	1.83m	6'
E Overall Length	4.9m	16'1"	4.9m	16'1"	4.9m	16'1"
F Overall Width	2.3m	7'7"	2.3m	7'7"	2.3m	7'7"
G Overall Height-Rails up	2.74m	9'	2.96m	9'9"	3.18m	10'5"
Overall Height-Rails down	2.06m	6'9"	2.28m	7'6"	2.5m	8'2"
Extension Deck	1.45/1.14m	4'9"/3'9"	1.45/1.14m	4'9"/3'9"	1.45/1.14m	4'9"/3'9"
H Wheelbase	2.85m	9'4"	2.85m	9'4"	2.85m	9'4"
Ground Clearance-Center	0.23m	9"	0.23m	9"	0.23m	9"
PRODUCTIVITY						
Max. Platform Occupancy(in/out)	7 / 7		7 / 7		4 / 4	
Platform Capacity	1,100kg	2,430 lbs	680kg	1,500 lbs	680kg	1,500 lbs
Platform Capacity-Extension	230kg	510 lbs	230kg	510 lbs	230kg	510 lbs
Drive Height	Full Height		Full Height		8.5m	27'11"
Gradeability-Stowed	40%	40%	40%	40%	40%	40%
Min. Turning Radius	5.33m	17'6"	5.33m	17'6"	5.33m	17'6"
Raise/Lower Speed	45s / 45s		55s / 55s		55s / 55s	
Brakes	Four-wheel Brake		Four-wheel Brake		Four-wheel Brake	
Drive Mode	4x4		4x4		4x4	
Tire Type	Solid Non-marking		Solid Non-marking		Solid Non-marking	
Tire Size	835x290mm	33"x11"	835x290mm	33"x11"	835x290mm	33"x11"
Ground Pressure, Tyres	887.37 kPa	128.7 psi	887.71 kPa	128.8 psi	888.31 kPa	128.8 psi
POWER						
Power Source	Deutz 36.4kW/48.8hp Kubota 36kW/48.2hp		Deutz 36.4kW/48.8hp Kubota 36kW/48.2hp		Deutz 36.4kW/48.8hp Kubota 36kW/48.2hp	
Fuel Tank Capacity	100L	26.4gal	100L	26.4gal	100L	26.4gal
HYDRAULIC SYSTEM						
Hydraulic Oil Volume	140L	37gal	140L	37gal	140L	37gal
WEIGHT						
Machine Weight	6,980kg	15,400 lbs	7,460kg	16,450 lbs	8,200kg	18,080 lbs

STANDARD FEATURES

- Proportional control
- Foldable guardrail
- Emergency stop device
- Manual brake release
- Emergency descent
- Oscillating axle
- Self-lock entry gate
- Tilt alarm with lift cut-out
- Overload sensing system
- Descent alarm with flashing beacon
- All motions alarm
- Intelligent diagnostic system
- AC power to platform
- Battery Isolation
- Starter isolation
- White noise alarm (squawkers)
- Jump start
- LED lights
- Non-marking tyres
- Power to platform with RCD

MACHINE SIZE



OPTIONAL

- Telematics
- Cold weather package
- Pipe racks
- Solid non-marking tires
- Foam-filled non-marking tires
- Fire extinguisher bracket
- Wheel chocks
- Nut indicators
- Crush protection system
- High visibility tape
- Pulley generator
- Hydraulic generator
- Hydraulic outriggers(Only for SR0818D)

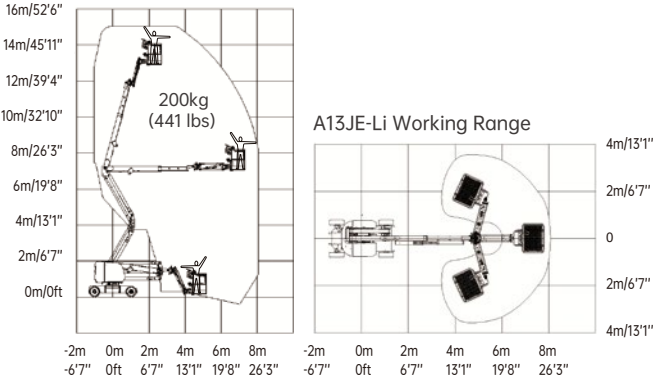
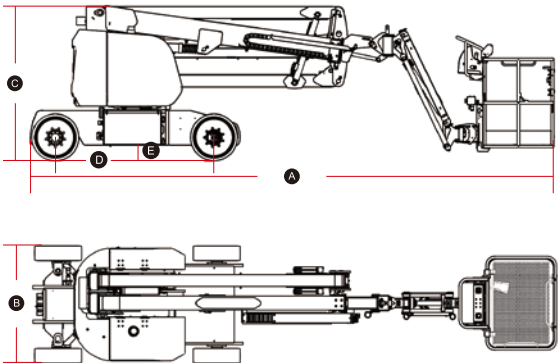


LGMG electric articulating boom aerial work platforms provide environmentally friendly, zero-emission operation for indoor and outdoor applications. The maximum working height ranges from 11 to 26.6 meters (36'1"/87'3").

- Proportional control ensures smooth driving, precise positioning and comfortable operation.
- Battery powered, zero emission, quiet drive and long battery duty cycle.
- Self-leveling platform together with hydraulic jib rotation delivers exceptional productivity.
- Intelligent self-diagnostic system for quick trouble-shooting.

SPECIFICATIONS

MODELS	A09JE (A30JE)		AR11JE-2 (AR35JE-2)		A13JE-Li (A43JE-Li)		A14JE (A45JE)	
Measurements	Metric	Imperial	Metric	Imperial	Metric	Imperial	Metric	Imperial
Work Height Max.	11m	36'1"	12.75m	41'10"	15m	49'3"	15.8m	51'10"
Platform Height Max.	9m	29'6"	10.75m	35'3"	13m	42'8"	13.8m	45'3"
Horizontal Outreach	6.25m	20'6"	6.78m	22'3"	7.46m	24'6"	7.81m	25'7"
Up and Over Height	4.12m	13'6"	5.32m	17'5"	7.1m	23'4"	7.26m	23'10"
Platform Length	1.17m	3'10"	1.42m	4'8"	1.2m	3'11"	1.83m	6'
Platform Width	0.76m	2'6"	0.76m	2'6"	0.9m	2'11"	0.76m	2'6"
<div>A</div> Stowed Length	5.46m	17'11"	5.77m	18'11"	6.7m	22'	6.66m	21'10"
Length-Transport (jib tucked)	3.58m	11'9"	4.46m	14'8"	5.35m	17'7"	5.85m	19'2"
<div>B</div> Overall Width	1.19m	3'11"	1.85m	6'1"	1.5m	4'11"	1.8m	5'11"
<div>C</div> Stowed Height	2m	6'7"	2m	6'7"	1.98m	6'6"	1.98m	6'6"
Height-Transport	2.52m	8'3"	2.29m	7'6"	2.11m	6'11"	2.6m	8'6"
<div>D</div> Wheelbase	1.58m	5'2"	1.88m	6'2"	2.03m	6'8"	2.03m	6'8"
<div>E</div> Ground Clearance	0.09m	4"	0.19m	7"	0.2m	8"	0.24m	9"
PRODUCTIVITY								
Platform Capacity	230kg	507 lbs	270kg	595 lbs	200kg	440 lbs	230kg	507 lbs
Max. Platform Occupancy	2		2		2		2	
Turntable Rotation	355°		355°		355°		355°	
Drive Speed-Stowed	5km/h	3.1mph	5km/h	3.1mph	5km/h	3.1mph	4.8km/h	3mph
Drive Speed-Raised	0.65km/h	0.4mph	0.8km/h	0.5mph	0.8km/h	0.5mph	1km/h	0.62mph
Gradeability	30%		45%		30%		30%	
Max. Wind Speed	12.5m/s	28mph	12.5m/s	28mph	12.5m/s	28mph	12.5m/s	28mph
Turning Radius-Inside	1.65m	5'5"	2.6m	8'6"	2.2m	7'3"	1.83m	6'
Turning Radius-Outside	3.15m	10'4"	4.7m	15'5"	4.07m	13'4"	4.1m	13'5"
Max. Slope	2.5°/4.5°		3°/4.5°		3°/3°		3°/3°	
Tire Type	Solid Non-marking		Foam-filled Non-marking		Solid Non-marking		Foam-filled Non-marking	
Tire Models	22x7		10-16.5		600x190		9-14.5	
Ground Pressure, Tyres	715 kPa	103.7 psi	289 kPa	103.7 psi	1584.7 kPa	229.8 psi	820.8 kPa	119 psi
POWER								
Lead-acid Battery	48V(8x6V),390Ah,FLA		/		/		48V(8x6V),390Ah,FLA	
Lithium Battery	/		80V 125Ah		48V 250Ah		48V 280Ah	
HYDRAULIC SYSTEM								
Hydraulic Oil Volume	17L	4.5gal	16L	4.2gal	25L	6.6gal	30L	7.9gal
WEIGHT								
Machine Weight	6,700kg	14,771 lbs	6,950kg	15,322 lbs	6,950kg	15,322 lbs	7,500kg	16,535 lbs



SPECIFICATIONS

MODELS	AR16JE-2 (AR52JE-2)		AR20JE (AR65JE)		AR24JE (AR80JE)	
Measurements	Metric	Imperial	Metric	Imperial	Metric	Imperial
Work Height Max.	17.9m	58'9"	21.58m	70'10"	26.6m	87'3"
Platform Height Max.	15.9m	52'2"	19.58m	64'3"	24.6m	80'9"
Horizontal Outreach	9.4m	30'10"	12.37m	40'7"	18m	59'1"
Up and Over Height	7.4m	24'3"	8.19m	26'10"	8.83m	28'11"
Platform Length	1.83m	6'	2.44m	8'	2.44m	8'
Platform Width	0.76m	2'6"	0.9m	2'11"	0.9m	2'11"
<div><div>A</div> Stowed Length</div>	7.56m	24'10"	9.42m	30'11"	11.6m	36'1"
Length-Transport (jib tucked)	5.95m	19'6"	7.63m	25'	11.6m	36'1"
<div><div>B</div> Overall Width</div>	2.3m	7'7"	2.5m	8'2"	2.5m	8'2"
<div><div>C</div> Stowed Height</div>	2.26m	7'5"	2.46m	8'1"	2.83m	9'3"
Height-Transport	2.68m	8'10"	2.96m	9'9"	2.83m	9'3"
<div><div>D</div> Wheelbase</div>	2.25m	7'5"	2.51m	8'3"	2.85m	9'4"
<div><div>E</div> Ground Clearance</div>	0.35m	1'2"	0.4m	1'4"	0.4m	1'4"
PRODUCTIVITY						
Platform Capacity (unrestricted)	250kg	551 lbs	260kg	573 lbs	250kg	551 lbs
Platform Capacity (restricted)	350kg	772 lbs	350kg	772 lbs	350kg	772 lbs
Max. Platform Occupancy	2 (unrestricted) / 3 (restricted)		2 (unrestricted) / 3 (restricted)		2 (unrestricted) / 3 (restricted)	
Turntable Rotation	355°		360°		360°	
Drive Speed-Stowed	5km/h	3.1mph	5km/h	3.1mph	5km/h	3.1mph
Drive Speed-Raised	0.8km/h	0.5mph	0.8km/h	0.5mph	0.8km/h	0.5mph
Gradeability	45%		45%		45%	
Max. Wind Speed	12.5m/s	28mph	12.5m/s	28mph	12.5m/s	28mph
Turning Radius-Inside	2.9m	9'6"	1.9m	6'3"	2.04m	6'8"
Turning Radius-Outside	5.7m	18'8"	3.9m	12'10"	4.13m	13'7"
Max. Slope	5°/5°		4°/4°		5°/5°	
Tire Type	Foam-filled Non-marking		Foam-filled Non-marking		Foam-filled non-marking	
Tire Models	315/55D20		355/55D625		15-625	
Ground Pressure, Tyres	415.3 kPa	60.2 psi	523.12 kPa	75.9 psi	970.8 kPa	140.8 psi
POWER						
Lithium Battery	80V 173Ah		80V 271Ah		80V 460Ah	
HYDRAULIC SYSTEM						
Hydraulic Oil Volume	60L	15.9gal	105L	27.7gal	105L	27.7gal
WEIGHT						
Machine Weight	7,200kg	15,873 lbs	9,700kg	21,385 lbs	17,300kg	38,139 lbs

STANDARD FEATURES

- Proportional control
- Horn/Hour meter
- Tilt alarm with lift cut-out
- Emergency stop button
- Anti-collision protection
- Platform auto-leveling system
- Battery Isolation
- White noise alarm(squawkers)
- Platform tool box (A14JE/AR20JE/AR24JE)
- AC power to platform
- Full-height drive
- Overload sensing system
- Descent alarm with flashing beacon
- Telematics connector
- On-board diagnostic system
- LED lights

OPTIONAL

- Biodegradable hydraulic oil
- Half-height mesh platform
- Battery isolator switch
- Wheel chocks
- Nut indicators
- Crush protection system
- High visibility tape
- Pulley generator
- LGMG intelligent harness
- Telematics
- Solid tires
- Auxiliary rail
- Hydraulic generator

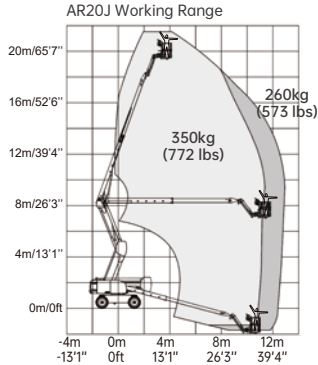
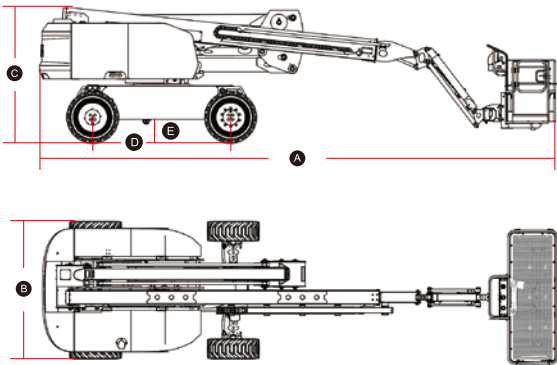
PART 8 DIESEL ARTICULATING BOOM LIFT

LGMG diesel-powered articulating boom aerial work platforms designed for outdoor construction and industrial applications, with the maximum working height ranging from 12.75 to 26.6 meters (41'10"/87'3").

- The oscillating axles and four-wheel drive deliver better grade-ability on rough terrain.
- Proportional smooth driving, precise positioning and comfortable operation.
- Self-leveling platform together with hydraulic jib rotation delivers exceptional productivity.
- Swing out engine tray for easy access and maintenance.
- Intelligent self-diagnostic system for quick troubleshooting.

SPECIFICATIONS

MODELS	AR11J (AR35J)		AR14J-H (AR45J-H)	
Measurements	Metric	Imperial	Metric	Imperial
Work Height Max.	12.75m	41'10"	15.9m	52'2"
Platform Height	10.75m	35'3"	13.9m	45'7"
Horizontal Outreach	6.78m	22'3"	7.7m	25'3"
Up and Over Height	5.32m	17'5"	7.4m	24'3"
Platform Length	1.42m	4'8"	2.3m	7'7"
Platform Width	0.76m	2'6"	0.9m	2'11"
A Stowed Length	5.77m	18'11"	6.95m	22'10"
Length-Transport (jib tucked)	4.46m	14'8"	5.9m	19'4"
B Overall Width	1.85m	6'1"	2.3m	7'7"
C Stowed Height	2.06m	6'9"	2.24m	7'4"
Height-Transport	2.29m	7'6"	2.65m	8'8"
D Wheelbase	1.88m	6'2"	2.25m	7'5"
E Ground Clearance	0.19m	7"	0.35m	1'2"
PRODUCTIVITY				
Platform Capacity (unrestricted)	270kg	595 lbs	300kg	661 lbs
Platform Capacity (restricted)	/		450kg	992 lbs
Max. Platform Occupancy	2		2 (unrestricted) / 3 (restricted)	
Turntable Rotation	355°		355°	
Drive Speed-Stowed	5km/h	3.1mph	5km/h	3.1mph
Drive Speed-Raised	0.8km/h	0.5mph	0.8km/h	0.5mph
Gradeability	45%		45%	
Max. Wind Speed	12.5m/s	28mph	12.5m/s	28mph
Turning Radius-Inside	2.6m	8'6"	1.67m	5'6"
Turning Radius-Outside	4.7m	15'5"	3.66m	12'
Max. Slope	3°/4.5°		5°/5°	
Tire Type	Foam-filled non-marking		Foam-filled non-marking	
Tire Models	10-16.5		315/55D20	
Ground Pressure, Tyres	289 kPa	41.9 psi	520 kPa	75.4 psi
POWER				
Power Source	Kubota 18.2kW/24.4hp		Kubota 36kW/48.3hp	
Fuel Tank Capacity	45L	11.9gal	65L	17.2gal
HYDRAULIC SYSTEM				
Hydraulic Oil Volume	58L	15.3gal	75L	19.8gal
WEIGHT				
Machine Weight	5,400kg	11,905 lbs	7,400kg	16,314 lbs



SPECIFICATIONS

MODELS	AR16J-2 (AR52J-2)		AR20J (AR65J)		AR24J (AR80J)	
Measurements	Metric	Imperial	Metric	Imperial	Metric	Imperial
Work Height Max.	17.9m	58'9"	21.58m	70'10"	26.6m	87'3"
Platform Height	15.9m	52'2"	19.58m	64'3"	24.6m	80'9"
Horizontal Outreach	9.81m	32'2"	12.37m	40'7"	18m	59'1"
Up and Over Height	7.5m	24'7"	8.19m	26'10"	8.83m	28'11"
Platform Length	1.83m	6'	2.44m	8'	2.44m	8'
Platform Width	0.76m	2'6"	0.9m	2'11"	0.9m	2'11"
A Stowed Length	7.91m	25'11"	9.42m	30'11"	11.6m	36'1"
Length-Transport (jib tucked)	6.41m	21'	7.63m	25'	11.6m	36'1"
B Overall Width	2.3m	7'7"	2.5m	8'2"	2.5m	8'2"
C Stowed Height	2.24m	7'4"	2.46m	8'1"	2.83m	9'3"
Height-Transport	2.76m	9'1"	2.96m	9'9"	2.83m	9'3"
D Wheelbase	2.25m	7'5"	2.51m	8'3"	2.85m	9'4"
E Ground Clearance	0.33m	1'1"	0.4m	1'4"	0.4m	1'4"
PRODUCTIVITY						
Platform Capacity (unrestricted)	260kg	573 lbs	260kg	573 lbs	250kg	551 lbs
Platform Capacity (restricted)	450kg	992 lbs	350kg	772 lbs	350kg	772 lbs
Max. Platform Occupancy	2 (unrestricted) / 3 (restricted)					
Turntable Rotation	355°		360°		360°	
Drive Speed-Stowed	5km/h	3.1mph	5km/h	3.1mph	5km/h	3.1mph
Drive Speed-Raised	0.8km/h	0.5mph	0.8km/h	0.5mph	0.8km/h	0.5mph
Gradeability	45%		45%		45%	
Max. Wind Speed	12.5m/s	28mph	12.5m/s	28mph	12.5m/s	28mph
Turning Radius-Inside	1.35m	4'5"	1.9m	6'3"	2.04m	6'8"
Turning Radius-Outside	3.66m	12'	3.9m	12'10"	4.13m	13'7"
Max. Slope	5°/5°		4°/4°		5°/5°	
Tire Type	Foam-filled non-marking		Foam-filled non-marking		Foam-filled non-marking	
Tire Models	315/55D20		355/55D625		15-625	
Ground Pressure, Tyres	438 kPa	63.5 psi	523.12 kPa	75.9 psi	970.8 kPa	140.8 psi
POWER						
Power Source	Kubota 18.2kW/24.4hp		Kubota 36kW/48.3hp		Kubota 36kW/48.3hp	
Fuel Tank Capacity	65L	17.2gal	65L	17.2gal	100L	26.4gal
HYDRAULIC SYSTEM						
Hydraulic Oil Volume	75L	19.8gal	115L	30.4gal	162L	42.8gal
WEIGHT						
Machine Weight	8,650kg	19,070 lbs	9,850kg	21,715 lbs	17,300kg	38,139 lbs

STANDARD FEATURES

- Proportional control
- Horn/Hour meter
- Tilt alarm with lift cut-out
- Emergency stop button
- Anti-collision protection
- Platform auto-leveling system
- On-board diagnostic system
- White noise alarm (squawkers)
- Overload sensing system
- Descent alarm with flashing beacon
- AC power to platform
- Platform tool box
- Oscillating axle
- Full-height drive
- Battery isolation
- Starter Isolation
- Telematics connector

OPTIONAL

- Telematics
- Half-height mesh platform
- Cold weather package
- Auxiliary rail
- Biodegradable hydraulic oil
- Jump start
- Fire extinguisher bracket
- LGMG intelligent harness
- Battery isolator switch (double pole)
- Start motor isolator switch (double pole)
- Wheel chocks
- Nut indicators
- Crush protection system
- High visibility tape
- Pulley generator
- Hydraulic generator



LGMG's new electric telescopic boom aerial work platform is equipped with a lithium battery, and has the advantages of low noise and zero emissions. The maximum working height of the platform ranges from 18.3 to 29.8 meters (60'97'9"). Platform accommodates up to 3 people and 450/300kg (992/661 lbs) dual capacity design for increased work efficiency. Excellent performance in driving performance, stability and operating precision, suitable for various harsh working environments.

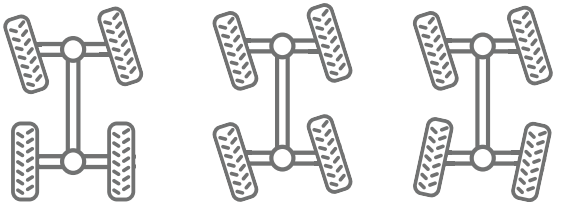
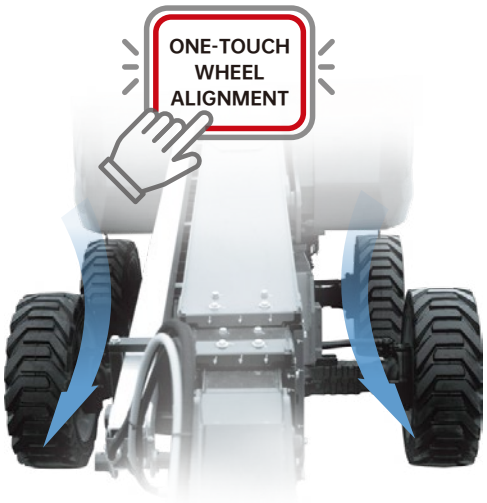
FEATURES

Green technology, eco-friendly

- Fully electric drive, noiseless, zero-emission, energy-saving, and eco-friendly.
- Ultra-high capacity lithium battery, 100% maintenance-free, smart battery management system, super-long battery life.
- Various charging modes are available as standard, and a charging pile port is available as optional.

Excellent RT performance

- Integrated four-wheel-drive system with axles offering strong power and smooth transmission, and 45% gradeability.
- Oscillating, full-time floating axle, maximum 5 degree tilt angle chassis. It allows the wheels to grip the ground when driving on hard, uneven terrain.



- Equipped with three steering modes: four-wheel steering, crab steering, and front-wheel steering, the boom lifts are also capable of one-touch wheel alignment.

More comfortable operation

- Proportional lift and drive controls deliver smoother manoeuvring, precise positioning and comfortable operation.

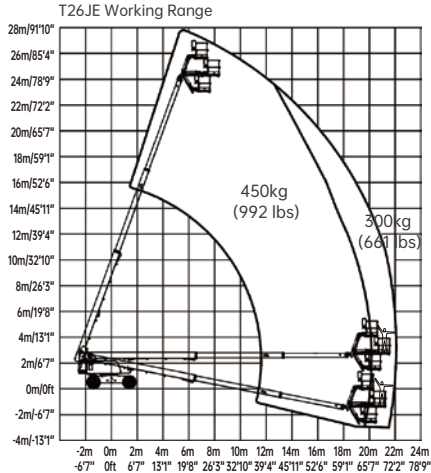
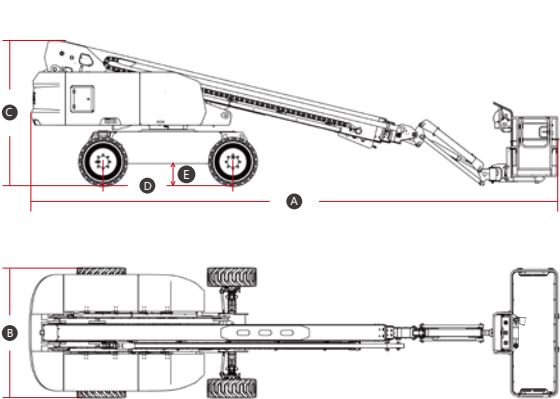


Higher maintenance efficiency

- More than 95% of the main components are interchangeable and so are more than 80% of structural parts, which helps to reduce spare parts storage costs and improve maintenance efficiency.
- Intelligent self-diagnostic system for quick troubleshooting and reduced downtime.

SPECIFICATIONS

MODELS	T16JE-2 (T52JE-2)		T20JE (T65JE)		T22JE (T72JE)	
Measurements	Metric	Imperial	Metric	Imperial	Metric	Imperial
Work Height Max.	18.3m	60'	21.8m	71'6"	23.8m	78'1"
Platform Height	16.3m	53'6"	19.8m	65'	21.8m	71'6"
Horizontal Outreach Max.	11.3m	37'1"	16.6m	54'6"	16.6m	54'6"
Platform Length	2.44m	8'	2.44m	8'	2.44m	8'
Platform Width	0.9m	2'11"	0.9m	2'11"	0.9m	2'11"
A Length-Stowed	9.18m	30'1"	10.2m	33'6"	11m	36'1"
Length-Transport (jib tucked)	6.87m	22'6"	8.3m	27'3"	9.03m	29'8"
B Overall Width	2.42m	7'11"	2.5m	8'2"	2.5m	8'2"
C Height-Stowed	2.65m	8'8"	2.77m	9'1"	2.77m	9'1"
Height-Transport	3.02m	9'11"	2.89m	9'6"	2.88m	9'5"
D Wheelbase	2.4m	7'10"	2.51m	8'3"	2.51m	8'3"
E Ground Clearance	0.37m	1'3"	0.4m	1'4"	0.4m	1'4"
PRODUCTIVITY						
Platform Capacity (unrestricted)	300kg	661 lbs	300kg	661 lbs	300kg	661 lbs
Platform Capacity (restricted)	450kg	992 lbs	450kg	992 lbs	450kg	992 lbs
Max. Platform Occupancy	2 (unrestricted) / 3 (restricted)					
Turntable Rotation	360°Continuous		360°Continuous		360°Continuous	
Drive Speed-Stowed	5km/h	3.1mph	5km/h	3.1mph	5km/h	3.1mph
Drive Speed-Raised	0.8km/h	0.5mph	0.8km/h	0.5mph	0.8km/h	0.5mph
Gradeability	45%		45%		45%	
Max. Wind Speed	12.5m/s	28mph	12.5m/s	28mph	12.5m/s	28mph
Turning Radius-Inside	1.8m	5'11"	1.9m	6'3"	1.9m	6'3"
Turning Radius-Outside	3.8m	12'6"	3.9m	12'10"	3.9m	12'10"
Max. Slope	5°/5°		5°/5°		5°/5°	
Tire Type	Solid Non-marking		Foam-filled non-marking		Foam-filled non-marking	
Tire Models	33x12-20		355/55D625		355/55D625	
Ground Pressure, Tyres	431.7 kPa	62.6 psi	670 kPa	97.2 psi	652 kPa	94.6 psi
POWER						
Power	80V 125Ah		80V 375Ah		80V 375Ah	
HYDRAULIC SYSTEM						
Hydraulic Oil Volume	60L	15.9gal	100L	26.4gal	100L	26.4gal
WEIGHT						
Machine Weight	7,400kg	16,314 lbs	12,000kg	26,455 lbs	12,300kg	27,117 lbs



SPECIFICATIONS

MODELS	T26JE (T85JE)		T28JE (T92JE)	
Measurements	Metric	Imperial	Metric	Imperial
Work Height Max.	27.9m	91'6"	29.8m	97'9"
Platform Height	25.9m	85'	27.8m	91'2"
Horizontal Outreach Max.	21.6m	70'10"	21.6m	70'10"
Platform Length	2.44m	8'	2.44m	8'
Platform Width	0.9m	2'11"	0.9m	2'11"
A Length-Stowed	12.8m	42'	13.4m	44'
Length-Transport (jib tucked)	11m	36'1"	11.47m	37'8"
B Overall Width	2.5m	8'2"	2.5m	8'2"
C Height-Stowed	2.82m	9'3"	2.82m	9'3"
Height-Transport	3.03m	9'11"	3.02m	9'11"
D Wheelbase	2.85m	9'4"	2.85m	9'4"
E Ground Clearance	0.4m	1'4"	0.4m	1'4"
PRODUCTIVITY				
Platform Capacity (unrestricted)	300kg	661 lbs	300kg	661 lbs
Platform Capacity (restricted)	450kg	992 lbs	450kg	992 lbs
Max. Platform Occupancy	2 (unrestricted)/3 (restricted)			
Turntable Rotation	360°Continuous		360°Continuous	
Drive Speed-Stowed	5km/h	3.1mph	5km/h	3.1mph
Drive Speed-Raised	0.8km/h	0.5mph	0.8km/h	0.5mph
Gradeability	45%		45%	
Max. Wind Speed	12.5m/s	28mph	12.5m/s	28mph
Turning Radius-Inside	2.04m	6'8"	2.04m	6'8"
Turning Radius-Outside	4.13m	13'7"	4.13m	13'7"
Max. Slope	5°/5°		5°/5°	
Tire Type	Foam-filled non-marking		Foam-filled non-marking	
Tire Models	15-625		15-625	
Ground Pressure, Tyres	899 kPa	130.4 psi	903 kPa	131 psi
POWER				
Power	80V 542Ah		80V 542Ah	
HYDRAULIC SYSTEM				
Hydraulic Oil Volume	105L	27.7gal	105L	27.7gal
WEIGHT				
Machine Weight	18,200kg	40,124 lbs	18,700kg	41,226 lbs

STANDARD FEATURES

- Proportional control
- Horn/Hour meter
- Descent alarm
- Flashing beacons
- Cylinder bellows
- Platform tool box
- Oscillating axle
- Telematics connector
- Emergency stop button
- White noise alarm (squawkers)
- Anti-collision protection
- Over-tilt protection system
- Platform control cover
- Overload sensing system
- Intelligent diagnostic system
- AC power to platform
- Battery Isolation
- Auto-leveling platform
- LED lights

OPTIONAL

- Telematics
- Auxiliary rail
- Half-height mesh platform
- Solid tires
- Foam-filled tires
- Biodegradable hydraulic oil
- Fire extinguisher bracket
- High visibility tape
- Battery isolator switch (double pole)
- Wheel chocks
- Nut indicators
- Crush protection system
- High visibility tape
- Inverter (T16JE-2)
- Pulley generator
- Hydraulic generator

SPECIFICATIONS

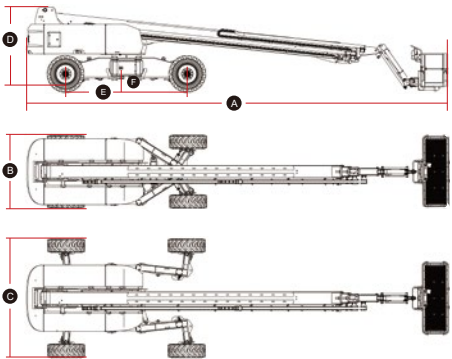
MODELS	T38JE-2 (T125JE-2)	
Measurements	Metric	Imperial
Work Height Max.	40.2m	131'11"
Platform Height Max.	38.2m	125'4"
Horizontal Outreach	22.3m	73'2"
Platform Length	2.44m	8'
Platform Width	0.9m	2'11"
A Stowed Length	14.31m	46'11"
Transport Length (jib tucked)	11.96m	39'3"
B Overall Width (axles retracted)	2.44m	8'
C Overall Width (axles extended)	4.04m	13'3"
D Stowed Height	2.74m	9'
Transport Height	3.15m	10'4"
E Wheelbase (axles retracted)	4.16m	13'8"
F Ground Clearance	0.34m	1'1"
PRODUCTIVITY		
Platform Capacity (unrestricted)	300kg	661 lbs
Platform Capacity (restricted)	450kg	992 lbs
Max. Platform Occupancy	2(unrestricted)/3(restricted)	
Turntable Rotation	360°	360°
Drive Speed-Stowed	5km/h	3.1mph
Drive Speed-Raised	0.6km/h	0.37mph
Gradeability	45%	45%
Max. Wind Speed	12.5m/s	28mph
Turning Radius-Inside (axles retracted)	6.6m	21'8"
Turning Radius-Outside (axles retracted)	9m	29'6"
Turning Radius-Inside (axles extended)	2.6m	8'6"
Turning Radius-Outside (axles extended)	6.2m	20'4"
Max. Slope	5°/5°	5°/5°
Tire Type	Foam-filled Non-marking	
Tire Models	445/50D 710	
Ground Pressure, Tyres	1075.3 kPa	156psi
POWER		
Lithium Battery	80V 560Ah	
HYDRAULIC SYSTEM		
Hydraulic Oil Volume	180L	47.6gal
WEIGHT		
Machine Weight	19,100kg	42,108 lbs

STANDARD FEATURES

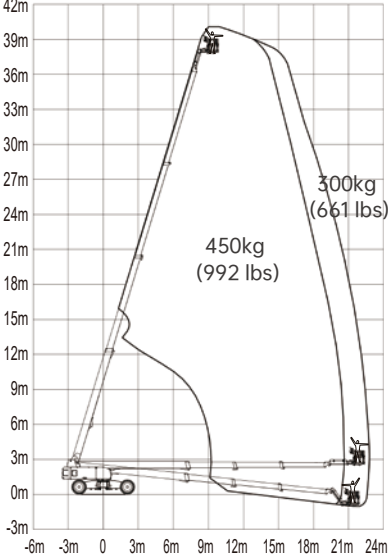
- OTA remote upgrade
- Intelligent self-diagnosis function
- Auto-leveling platform
- Hydraulic rotating platform 180°
- Full proportional joystick control
- Over-tilt protection system
- Over-head anti-collision protection
- Full time active oscillating axles
- White noise alarm (squawkers)
- Flashing beacons
- Horn/Hour meter
- Dual load 300kg/450kg
- Load sensitive system
- Emergency stop button
- Descent alarm
- AC power to platform

OPTIONAL

- Telematics
- Auxiliary rail
- Half-height mesh platform
- Solid tires
- Foam-filled tires
- Biodegradable hydraulic oil
- Battery isolator switch (double pole)
- Fire extinguisher bracket
- Wheel chocks
- Nut indicators
- Crush protection system
- High visibility tape
- Pulley generator
- Hydraulic generator



T38JE-2 Working Range



High Capacity High Productivity

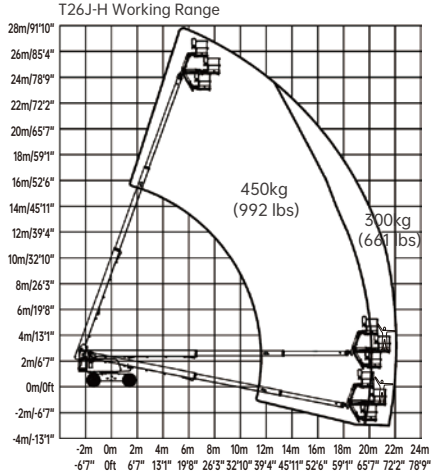
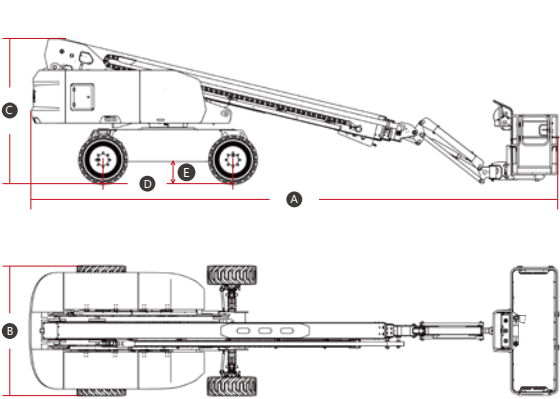
LGMG has a complete line of engine-driven, high-capacity telescopic boom aerial work platforms, with the maximum working height ranging from 18.3 to 29.8 meters (60'/97'9"). With a double capacity design of 450/300kg (992/661 lbs), the machine can allow up to 3 people to work at the same time, which greatly improves work efficiency.

FEATURES

- Oscillating, full-floating axle, maximum 5 degree tilt angle chassis, allows the wheels to grip to the ground when navigating hard, uneven terrain.
- Proportional lift and drive controls deliver smoother maneuvering, precise positioning and comfortable operation.
- Automatic engine speed control with a boom that descends by gravity. Allows smooth movement, saves energy, and reduces noise.
- Intelligent diagnostic and control system with precise fault analysis, convenient and efficient.
- More than 95% of the main components and more than 80% of the structural parts are interchangeable, which helps to reduce spare parts storage costs and improve maintenance efficiency.

SPECIFICATIONS

MODELS	T16J-2 (T52J-2)		T20J-H (T65J-H)		T22J-H (T72J-H)	
Measurements	Metric	Imperial	Metric	Imperial	Metric	Imperial
Work Height Max.	18.3m	60'	21.8m	71'6"	23.8m	78'1"
Platform Height	16.3m	53'6"	19.8m	65'	21.8m	71'6"
Horizontal Outreach Max.	11.3m	37'1"	16.6m	54'6"	16.6m	54'6"
Platform Length	2.44m	8'	2.44m	8'	2.44m	8'
Platform Width	0.9m	2'11"	0.9m	2'11"	0.9m	2'11"
A Length-Stowed	9.18m	30'1"	10.2m	33'6"	11m	36'1"
Length-Transport (jib tucked)	6.87m	22'6"	8.3m	27'3"	9.03m	29'8"
B Overall Width	2.42m	7'11"	2.49m	8'2"	2.49m	8'2"
C Height-Stowed	2.65m	8'8"	2.78m	9'1"	2.78m	9'1"
Height-Transport	3.02m	9'11"	2.89m	9'6"	2.88m	9'5"
D Wheelbase	2.4m	7'10"	2.51m	8'3"	2.51m	8'3"
E Ground Clearance	0.37m	1'3"	0.4m	1'4"	0.4m	1'4"
PRODUCTIVITY						
Platform Capacity (unrestricted)	300kg	661 lbs	300kg	661 lbs	300kg	661 lbs
Platform Capacity (restricted)	450kg	992 lbs	450kg	992 lbs	450kg	992 lbs
Max. Platform Occupancy	2 (unrestricted) / 3 (restricted)					
Turntable Rotation	360°Continuous		360°Continuous		360°Continuous	
Drive Speed-Stowed	4km/h	2.5mph	4.8km/h	3mph	4.8km/h	3mph
Drive Speed-Raised	0.8km/h	0.5mph	0.8km/h	0.5mph	0.8km/h	0.5mph
Gradeability	45%		45%		45%	
Max. Wind Speed	12.5m/s	28mph	12.5m/s	28mph	12.5m/s	28mph
Turning Radius-Inside	1.8m	5'11"	2.5m	8'2"	2.5m	8'2"
Turning Radius-Outside	3.8m	12'6"	5.5m	18'	5.5m	18'
Max. Slope	5°/5°		5°/5°		5°/5°	
Tire Type	Solid Non-marking		Foam-filled non-marking		Foam-filled non-marking	
Tire Models	33x12-20		355/55D625		355/55D625	
Ground Pressure, Tyres	431.7 kPa	62.6 psi	670 kPa	97.2 psi	652 kPa	94.6 psi
POWER						
Power Source	Kubota 18.2kW/24.4hp		Kubota 36kW/48.3hp		Kubota 36kW/48.3hp	
Fuel Tank Capacity	65L	17.2gal	100L	26.4gal	100L	26.4gal
HYDRAULIC SYSTEM						
Hydraulic Oil Volume	85L	22.5gal	180L	47.5gal	180L	47.5gal
WEIGHT						
Machine Weight	7,300kg	16.094 lbs	12,000kg	26,455 lbs	12,300kg	27,117 lbs



SPECIFICATIONS

MODELS	T26J (T85J)		T28J (T92J)	
Measurements	Metric	Imperial	Metric	Imperial
Work Height Max.	27.9m	91'6"	29.8m	97'9"
Platform Height	25.9m	85'	27.8m	91'2"
Horizontal Outreach Max.	21.6m	70'10"	21.6m	70'10"
Platform Length	2.44m	8'	2.44m	8'
Platform Width	0.9m	2'11"	0.9m	2'11"
A Length-Stowed	12.72m	41'9"	13.4m	44'
Length-Transport (jib tucked)	11m	36'1"	11.86m	38'11"
B Overall Width	2.5m	8'2"	2.5m	8'2"
C Height-Stowed	2.83m	9'3"	2.83m	9'3"
Height-Transport	2.99m	9'10"	3.01m	9'11"
D Wheelbase	2.85m	9'4"	2.85m	9'4"
E Ground Clearance	0.43m	1'5"	0.43m	1'5"
PRODUCTIVITY				
Platform Capacity (unrestricted)	300kg	661 lbs	300kg	661 lbs
Platform Capacity (restricted)	450kg	992 lbs	450kg	992 lbs
Max. Platform Occupancy	2 (unrestricted)/3 (restricted)			
Turntable Rotation	360°Continuous		360°Continuous	
Drive Speed-Stowed	4.8km/h	3mph	4.8km/h	3mph
Drive Speed-Raised	0.8km/h	0.5mph	0.8km/h	0.5mph
Gradeability	45%		45%	
Max. Wind Speed	12.5m/s	28mph	12.5m/s	28mph
Turning Radius-Inside	3.66m	12'	3.66m	12'
Turning Radius-Outside	6.55m	21'6"	6.55m	21'6"
Max. Slope	5°/5°		5°/5°	
Tire Type	Foam-filled non-marking		Foam-filled non-marking	
Tire Models	15-625		15-625	
Ground Pressure, Tyres	898 kPa	130.2 psi	902 kPa	130.8 psi
POWER				
Power Source	Kubota 54.6kW/73.2hp		Kubota 54.6kW/73.2hp	
Fuel Tank Capacity	100L	26.4gal	100L	26.4gal
HYDRAULIC SYSTEM				
Hydraulic Oil Volume	180L	47.5gal	180L	47.5gal
WEIGHT				
Machine Weight	18,300kg	40,345 lbs	18,800kg	41,447 lbs







STANDARD FEATURES

- Proportional control
- Horn/Hour meter
- Descent alarm
- Flashing beacons
- Cylinder bellows
- Platform tool box
- Oscillating axle
- Telematics connector
- Emergency stop button
- White noise alarm (squawkers)
- Anti-collision protection
- Over-tilt protection system
- Platform control cover
- Overload sensing system
- Intelligent diagnostic system
- AC power to platform
- Battery Isolation
- Auto-leveling platform
- LED lights

OPTIONAL

- Telematics
- Auxiliary rail
- Half-height mesh platform
- Solid tires
- Foam-filled tires
- Biodegradable hydraulic oil
- High visibility tape
- Fire extinguisher bracket
- Battery isolator switch (double pole)
- Wheel chocks
- Nut indicators
- Crush protection system
- High visibility tape
- Pulley generator
- Hydraulic generator

SPECIFICATIONS

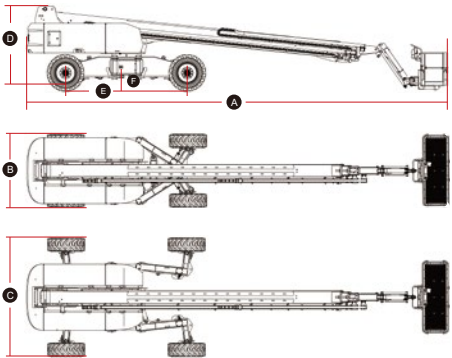
MODELS	T38J-2 (T125J-2)	
Measurements	Metric	Imperial
Work Height Max.	40.2m	131'11"
Platform Height Max.	38.2m	125'4"
Horizontal Outreach	22.3m	73'2"
Platform Length	2.44m	8'
Platform Width	0.9m	2'11"
 Stowed Length	14.31m	46'11"
Transport Length (jib tucked)	11.96m	39'3"
 Overall Width (axles retracted)	2.4m	7'10"
 Overall Width (axles extended)	4m	13'1"
 Stowed Height	2.74m	9'
Transport Height	3.15m	10'4"
 Wheelbase (axles retracted)	4.16m	13'8"
 Ground Clearance	0.34m	1'1"
PRODUCTIVITY		
Platform Capacity (unrestricted)	300kg	661 lbs
Platform Capacity (restricted)	450kg	992 lbs
Max. Platform Occupancy	2(unrestricted)/3(restricted)	
Turntable Rotation	360°	360°
Drive Speed-Stowed	5km/h	3.1mph
Drive Speed-Raised	0.6km/h	0.37mph
Gradeability	45%	45%
Max. Wind Speed	12.5m/s	28mph
Turning Radius-Inside (axles retracted)	6.6m	21'8"
Turning Radius-Outside (axles retracted)	9m	29'6"
Turning Radius-Inside (axles extended)	2.6m	8'6"
Turning Radius-Outside (axles extended)	6.2m	20'4"
Max. Slope	5°/5°	5°/5°
Tire Type	Foam-filled Non-marking	
Tire Models	445/50D 710	
Ground Pressure, Tyres	1075.3 kPa	156psi
POWER		
Power Source	Kubota 54.6kW/73.2hp	
Fuel Tank Capacity	150L	39.6gal
HYDRAULIC SYSTEM		
Hydraulic Oil Volume	220L	58.1gal
WEIGHT		
Machine Weight	19,100kg	42,108 lbs

STANDARD FEATURES

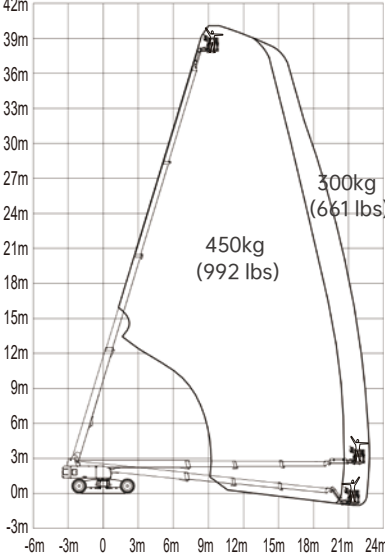
- OTA remote upgrade
- Intelligent self-diagnosis function
- Auto-leveling platform
- Hydraulic rotating platform 180°
- Full proportional joystick control
- Over-tilt protection system
- Over-head anti-collision protection
- Full time active oscillating axles
- White noise alarm (squawkers)
- Flashing beacons
- Horn/Hour meter
- Dual load 300kg/450kg
- Load sensitive system
- Emergency stop button
- Descent alarm
- AC power to platform

OPTIONAL

- Telematics
- Auxiliary rail
- Half-height mesh platform
- Solid tires
- Foam-filled tires
- Biodegradable hydraulic oil
- Battery isolator switch (double pole)
- Fire extinguisher bracket
- Wheel chocks
- Nut indicators
- Crush protection system
- High visibility tape
- Pulley generator
- Hydraulic generator



T38J-2 Working Range





PART 12 TELEHANDLERS

LGMG Telehandlers are the perfect choice for construction work. They are sturdy yet manoeuvrable, with excellent performance and strong four-wheel drive capabilities. The three steering modes and frame leveling function make the LGMG Telehandlers the perfect machine to tackle complex or difficult working conditions.

SPECIFICATIONS

MODELS	H625		H730		HA845	
Measurements	Metric	Imperial	Metric	Imperial	Metric	Imperial
Ⓐ Max. Lifting Height	5.94m	19'6"	6.9m	22'8"	7.6m	24'11"
Max. Outreach	3.41m	11'2"	4m	13'1"	4.45m	14'7"
Ⓑ Overall Length	3.99m	13'1"	5.01m	16'5"	5.54m	18'2"
Ⓒ Overall Width	1.86m	6'1"	2.3m	7'7"	2.41m	7'11"
Ⓓ Overall Height	1.97m	6'6"	1.99m	6'6"	2.45m	8'
Ⓔ Wheelbase	2.3m	7'7"	2.76m	9'1"	3m	9'10"
Ground Clearance	0.32m	1'1"	0.31m	1'	0.41m	1'4"
PRODUCTIVITY						
Max. Capacity	2,500kg	5512 lbs	3,000kg	6,614 lbs	4,500kg	9,921 lbs
Gradeability-Unladen	45%		45%		45%	
Min. Turning Radius	3.36m	11'	4m	13'1"	4.32m	14'2"
Tilt Angle (Rear axle)	±5°		±5°		±5°	
Drive /Steering Mode	4 Wheel Drive / 4 Wheel Steer					
Primary Boom Ascending Time	9s		9.43s		6.4±1s	
Primary Boom DescendingTime	6.5s		7.46s		4.6±1s	
Boom Extending Time	6s		7.45s		6.1±1s	
Boom Retracting Time	4s		9.4s		5.2±1s	
Forward - First Gear Travel Speed	10km/h	6.2mph	8km/h	5mph	5km/h	3.1mph
Forward - Second Gear Travel Speed	24.9km/h	15.5mph	24.9km/h	15.5mph	9km/h	5.6mph
Forward - Third Gear Travel Speed	/		/		14km/h	8.7mph
Forward - Fourth Gear Travel Speed	/		/		20km/h	12.4mph
Forward - Fifth Gear Travel Speed	/		/		27km/h	16.8mph
Forward - Sixth Gear Travel Speed	/		/		40km/h	24.9mph
Backward - First Gear Travel Speed	10km/h	6.2mph	8km/h	5mph	6km/h	3.7mph
Backward - Second Gear Travel Speed	24.9km/h	15.5mph	24.9km/h	15.5mph	13km/h	8.1mph
Backward - Third Gear Travel Speed	/		/		26km/h	16.2mph
Braking	Multi-disc wet brake of front axle		Multiple-disk brake with oil bath on front and rear axles		Multi-disc wet brake of front axle	
Standard Tyres	12-16.5-12-TL		385/65 D22.5		460/60 R24	
ENGINE						
Manufacturer	Kubota		Kubota		Perkins	
Rated Power	54.6kW	73.2hp	54.6kW	73.2hp	106kW	142.1hp
Max. Torque	261.1N.m	192.6 lb.ft	261.1N.m	192.6 lb.ft	558N.m	411.6 lb.ft
Displacement	3,331ml	203.3 cu.in	3,331ml	203.3 cu.in	4,400ml	268.5 cu.in
Maximum traction force	39kN		43kN		90kN	
HYDRAULIC SYSTEM						
Working pump type	Variable piston pump					
Working pump displacement	84 l/min	22 US gpm	113 l/min	30 US gpm	167 l/min	44 US gpm
TANK CAPACITIES						
Hydraulic Oil Capacity	75L	19.8 gal	100L	26.4gal	150L	39.6gal
Fuel Tank Capacity	63L	16.6 gal	100L	26.4gal	145L	38.3gal
WEIGHT						
Machine Weight	5,130kg	11,310 lbs	6,900kg	15,212 lbs	9,550kg	21,054 lbs



SPECIFICATIONS

MODELS	H1840		HR2150	
Measurements	Metric	Imperial	Metric	Imperial
Ⓐ Max. Lifting Height	17.6m	57'9"	20.7m	67'11"
Max. Outreach	13.1m	43'	18.1m	59'5"
Ⓑ Overall Length	5.9m	19'4"	6.86m	22'6"
Ⓒ Overall Width	2.44m	8'	2.46m	8'1"
Ⓓ Overall Height	2.67m	8'9"	3.15m	10'4"
Ⓔ Wheelbase	3.07m	10'1"	2.75m	9'
Ground Clearance	0.41m	1'4"	0.39m	1'3"
PRODUCTIVITY				
Max. Capacity	4,000kg	8,818 lbs	4,999kg	11,021 lbs
Gradeability-Unladen	65%		65%	
Min. Turning Radius	4.3m	14'1"	3.65m	12'
Tilt Angle (Front axle)	±9°		±8°	
Drive /Steering Mode	4 Wheel Drive / 4 Wheel Steer		4 Wheel Drive / 4 Wheel Steer	
Primary Boom Ascending Time	14s		27s	
Primary Boom DescendingTime	16s		22s	
Boom Extending Time	22s		32s	
Boom Retracting Time	15s		23s	
Forward - First Gear Travel Speed	5km/h	3.1mph	5km/h	3.1mph
Forward - Second Gear Travel Speed	12km/h	7.5mph	30km/h	18.6mph
Forward - Third Gear Travel Speed	20km/h	12.4mph	/	
Forward - Fourth Gear Travel Speed	30km/h	18.6mph	/	
Backward - First Gear Travel Speed	5km/h	3.1mph	5km/h	3.1mph
Backward - Second Gear Travel Speed	12km/h	7.5mph	30km/h	18.6mph
Backward - Third Gear Travel Speed	20km/h	12.4mph	/	
Braking	Multi-disc wet brake of front axle		Multiple-disk brake with oil bath on front and rear axles	
Standard Tyres	440/80 R24		445/70 R22.5	
POWER				
Manufacturer	Perkins		Perkins	
Rated Power	74.5kW	99.9hp	106kW	142.1hp
Max. Torque	420N.m	309.8 lb.ft	558N.m	411.2 lb.ft
Displacement	4,400ml	268.5 cu.in	4,400ml	268.5 cu.in
Maximum traction force	93kN		96kN	
HYDRAULIC SYSTEM				
Working pump type	Variable piston pump		Variable piston pump	
Working pump displacement	139 l/min	37 US gpm	132 l/min	35 US gpm
TANK CAPACITIES				
Hydraulic Oil Capacity	180L	47.6gal	260L	60.7gal
Fuel Tank Capacity	150L	39.6gal	170L	44.9gal
WEIGHT				
Machine Weight	12,350kg	27,227 lbs	17,100kg	37,699 lbs

FEATURES

High Power, Low Fuel Consumption

- Featured with high powerful engine for maximising material handling capacity with lower fuel consumption.

High Ergonomics, Safety and Comfort

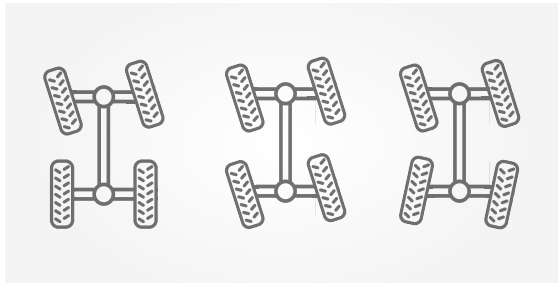
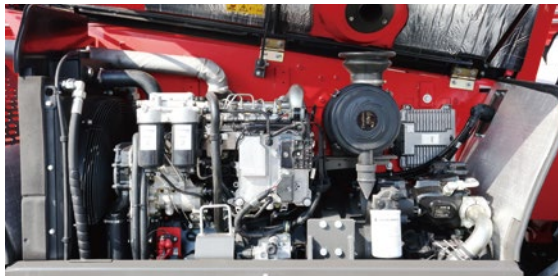
- FOPS&ROPS cab as standard, provides high effective safety on job sites.
- The standard high-capacity air conditioning system with heater, creates a comfortable and productive operator environment, which is ideal for work sites in hotter or cooler climates.
- Standard-fit LGMG fenders provide superior protection from dirt and spray.
- Excellent all-around visibility thanks to direct glazing, large roof screen and low engine house.

Precise Operation, Intelligent Controlling

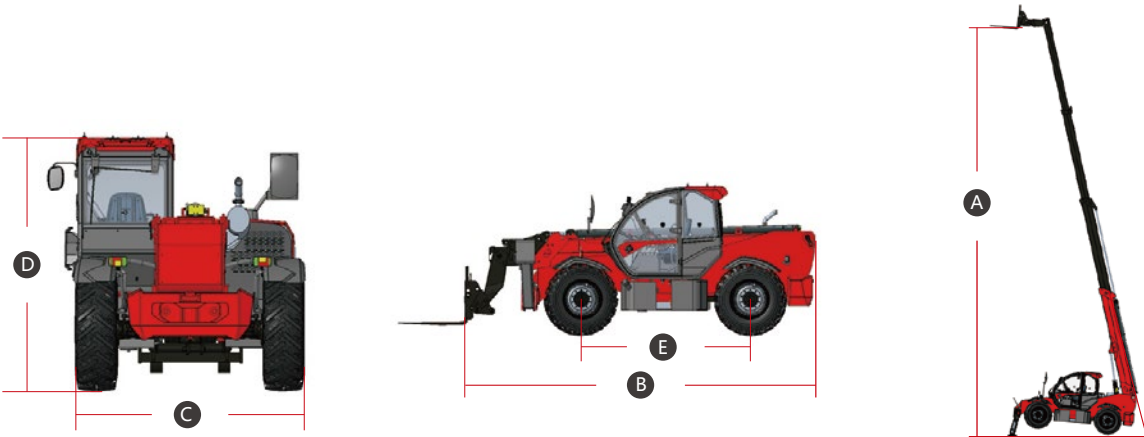
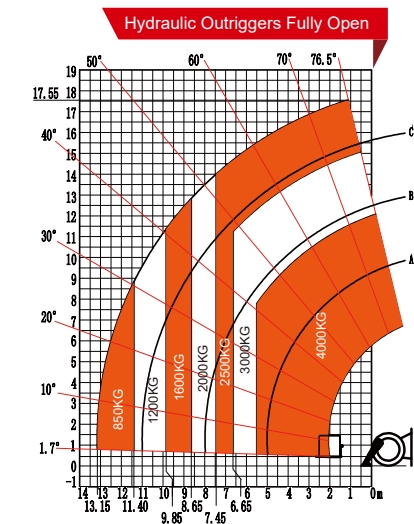
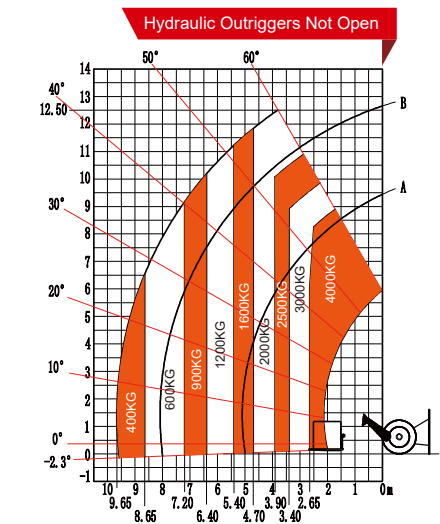
- The load-sense control system delivers high efficiency and excellent performance on different job sites.
- A large high-definition LCD screen, featuring an automa-tive-style and intuitive layout, provides a clear view and is easy to be recognized.
- An ergonomically-designed, fully proportional single-lever joy-stick delivers fast and precise control.

Versatile and Adaptable

- The three steering modes: four-wheel steering, crab steering, and front-wheel steering, with a small turning radius, make the machine perfect for constrained and restricted job sites.
- Auxiliary hydraulic functions are fitted as standard, to accom-modate a wide range of attachments, including platform, bucket, frame-mounted hook and glass suction, for maximum versatility.



LOAD CURVE OF H1840 UNDER RT CONDITION



DIESEL ROUGH TERRAIN FORKLIFT

- Rear-wheel steering with a turning angle of 45° offers ease of operation in tight spaces.
- The ergonomic design of joystick with adjustable armrests ensures flexible and comfortable operation.
- Fitted with high-performance pneumatic tires for excellent ground grip and outstanding off-road capabilities.
- A variety of tools are available for multi-functional use in various construction and agricultural scenarios.



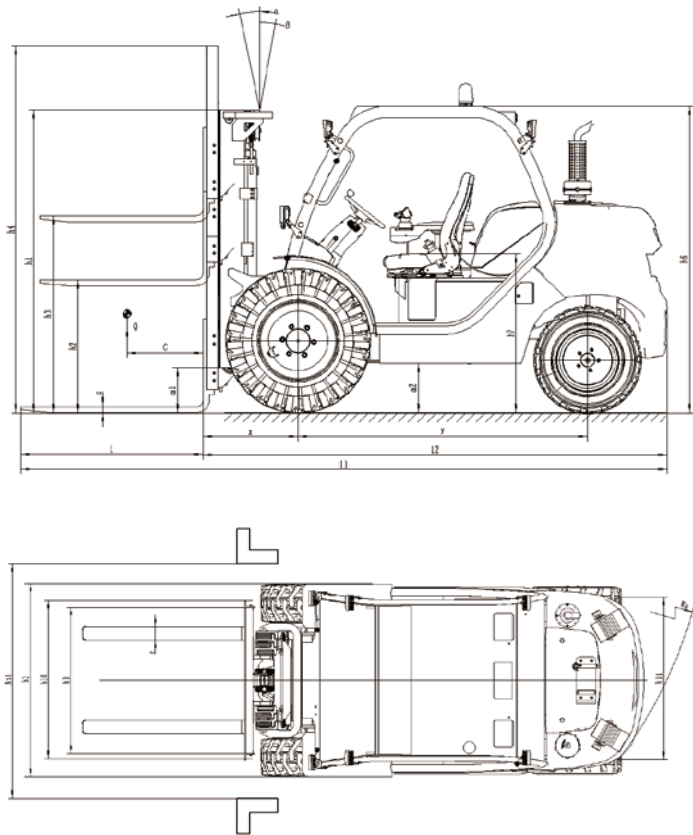
SPECIFICATIONS

Manufacturer		LGMG
Model	/	F25
Power type	/	Diesel
Type of operation	/	Seated
Q- Rated capacity	Q (kg)	2500
C- Center of gravity of load	C (mm)	600
x - Load distance, centre of drive axle to fork	x (mm)	621
Wheelbase	y (mm)	1900
Weights		
Service weight	kg	4350 ^①
Laden weight on front/rear axle	kg	5817/1050
Unladen weight on front/rear axle	kg	1859/2491
Wheels / Chassis		
Tyres type	/	Pneumatic
Tyres size, front	/	12.5/80-18/12
Tyres size, rear	/	28x9-15
Number of drive wheels	/	4
Front track	b10 (mm)	1160
Rear track	b11 (mm)	1190
Basic Dimensions		
Mast tilt forward/backward	α/β (°)	10/12
Lowered mast height	h1 (mm)	1975 ^①
Free lift	h2 (mm)	1200 ^①
Lift height	h3 (mm)	3400 ^①
Extended mast height	h4 (mm)	4435 ^①
Overhead load guard height	h6 (mm)	1975 ^②
Seat height	h7 (mm)	975
Overall length	l1 (mm)	4260
Length to face of forks	l2 (mm)	3040
Overall width	b1 (mm)	1495
Fork dimensions	s/e/l (mm)	40x122x1220
Fork carriage ISO2328 (class/form) A/B	/	2A
Fork carriage width	b3 (mm)	1040
Ground clearance below mast	m1 (mm)	300
Ground clearance at centre of wheelbase	m2 (mm)	300
Right-angle turn channel size	Ast (mm)	5333
Turning radius	Wa (mm)	3512
Performance Data		
Travel speed,laden/unladen	km/h	12/24
Lift speed,laden/unladen	m/s	0.47/0.50
lowering speed,laden/unladen	m/s	0.50/0.46
Max.drawbar pull,laden	daN	2930
Service brake	/	Hydrostatic
Engine		
Engine Type	/	V2403
Engine power according to ISO 1585	kW	36
Rated speed	rpm	2600
Number of pistons / Capacity of pistons	/ml	4/2434
Emission standard	/	EU Stage3A
Drive control		
Type of drive control	/	Hydrostatic transmission
Other		
Working hydraulic pressure for attachments	bar	180
Oil flow rate for attachments	l/min	38
Hydraulic oil tank capacity	l	56

CHARACTERISTICS OF MASTS

Free Lift Triplex (FLT)	Mast/fork carriage tilt, forward	Mast/fork carriage tilt, backward	Mast lowered height	Mast free lift	Mast lifting height	Mast extended height	Height at max capacity
	α(°)	β(°)	h1(mm)	h2(mm)	h3(mm)	h4(mm)	(mm)
FLT 34	10	12	1975	1200	3400	4435	2250

Full Visibility Duplex (FVD)	Mast/fork carriage tilt, forward	Mast/fork carriage tilt, backward	Mast lowered height	Mast free lift	Mast lifting height	Mast extended height	Height at max capacity
	α(°)	β(°)	h1(mm)	h2(mm)	h3(mm)	h4(mm)	(mm)
FVD 33	10	12	2340	130	3300	4410	2250



① Only for free lift triplex with a lifting height of up to 3.4m.
② Only for overhead guard without enclosed operator cab.

SERVICE CONCEPT

Create Lasting Value, Boost Brand-building, Focus on Detail, Go Beyond Expectation

LGMG provides comprehensive pre-sale, sale and after-sale attentive service. Integrate precise service into any link closely related to each customer, and provide technical support, training programs, warranty and parts sales to customers during the whole machine life-cycle.



SERVICE CONCEPT

TECHNICAL SUPPORT

LGMG service teams always provide remote technical support by phone or email and even on-site support with manuals, tools, information and service solutions.

SERVICE CONCEPT

TRAINING SUPPORT

LGMG provides various training programs for operators and service technicians, helping rental companies to improve their service and training capabilities via dedicated courses prepared by LGMG teams either online or on-site.



SERVICE CONCEPT

PARTS SUPPORT

LGMG provides sufficient stock of parts in LGMG's China headquarters, LGMG Europe/North America/Japan, and other global service centers. Accurate parts manuals and technical support teams are always available to answer your questions.

TRAINING CASE

Rigorous trainings / Professional certifications



APPLICATION SCENARIO

Perfect for different job sites

