

RELIABILITY IN ACTION



LINGONG HEAVY MACHINERY CO., LTD.

Address: No. 2676, Kejia Road, Jinan, Shandong, China
Email: sales@lmg.com.cn
Tel: +86 531 6787 9283

LGMG Europe B.V.

Address: Donker Duyvisweg 301, 3316 BL Dordrecht, The Netherlands
Email: sales@lmg-europe.com
Tel: +31 850 642 777

LGMG North America, Inc.

Address: 4105 Live Oak Drive, Suite 100, The Colony, Texas 75056 United States
Email: sales@lmg-na.com
Tel: +1 833 288 5464

LGMG Japan Co., Ltd

Address: ACN Shiodome Building 4F, 2-5-6 Higashishimbashi, Minato-ku, Tokyo 105-0021, Japan
Email: sales@lmg.com.cn
Tel: 03-3459-7007

LGMG Machinery Korea Co.,Ltd

Address: 570-7, Maebawi-ro, Namyang-eup, Hwaseong-si, Gyeonggi-do, Republic of Korea
Email: sales@lmg.com.cn
Tel: 031-357-0368

LGMG Machinery Australia Pty Ltd

Address: 27 Broadhurst Road, Ingleburn, NSW 2565
Email: sales@lmg-au.com.au
Tel: +61 499 685 544

PT. LGMG MACHINERY INDONESIA

Address: Jalan Lingkar Luar Barat Blok Venice B-16 Ruko Golf Lake Residence, Cengkareng Jakarta Barat 11730, Indonesia
Email: sales@lmg.com.cn
Tel: +62 21 54318201

LGMG Machinery U.K. Ltd

Address: Unit 6 Spitfire Court, Triumph Business Park, Speke, Liverpool, L24 9GQ
Email: sales@lmg-europe.com
Tel: +44(0)151 559 4506

LGMG Mexico Factory

Address: calle principal 113, parque industrial Roots, Marín , Nuevo León
Email: admin@lmg.mx
Tel: +52 81 8287 6207

FOLLOW US:    

www.lmglifts.com

Please contact LGMG or local dealer for more details.
LGMG reserves the right to change technical data without prior notice.
All photos and pictures in this brochure are for promotional purpose only.
This brochure comes into effect in November, 2024.

Information of agent

LGMG

MOBILE ELEVATING WORK PLATFORMS



CONTENTS



P01-02 Contents

P03-06 Group Profile

P07-08 Scissor Lift Range (SS Series)

P09-16 Scissor Lift Range

P17-20 Electric RT Scissor Lift

P21-24 Diesel RT Scissor Lift

P25-26 Crawler Scissor Lift

P27-30 Vertical Mast Lift

P31-33 Electric Articulating Boom Lift

P34-36 Diesel Articulating Boom Lift

P37-42 Electric Telescopic Boom Lift

P43-48 Diesel Telescopic Boom Lift

P49-56 Telehandlers

P57-58 Service & Application

GROUP PROFILE

Founded in 1972, Lingong Machinery Group is one of the key players in construction machinery, one of the top 100 enterprises in the machinery industry and one of the top five groups in the construction machinery industry in China.

The Group consists of three core companies, including: Shandong Lingong Construction Machinery Co., Ltd. (SDLG), Lingong Heavy Machinery Co., Ltd. (LGMG) and Lingong Special Machinery Co., Ltd. The Group's business covers five sectors: construction machinery, mining machinery, MEWPs, special machinery and component manufacturing.

LGMG is privately-owned subsidiary of Lingong Group, located in Jinan, Shandong Province, China. Business segments include MEWPs, mining equipment. Today, LGMG has become an important player in the Chinese construction machinery industry, holding a place as one of the top 100 global construction machinery manufacturers, the top 30 Chinese construction machinery manufacturers and the top 5 Chinese MEWPs manufacturers.

LGMG offers a wide range of access equipment, electric and rough terrain scissor lifts, articulating and telescopic boom lifts. In 2022, telehandlers have been added to LGMG's product line.

In 2018, LGMG Europe was established in the Netherlands to serve as a distribution and service hub for the EMEA market.

In 2019, LGMG North America opened a headquarters in Pennsylvania together with other three warehouses across the country.

In 2020, LGMG Japan was established, integrating marketing and technology research and development functions into one.

In the years that followed, LGMG has established subsidiaries in South Korea, Australia, the United Kingdom, and Indonesia to further expand its global footprint.

In December 2023, LGMG Mexico plant was successfully put into operation. Situated in the Roots Industrial Park in Monterrey, Nuevo León state. Its opening marks a solid step forward for LGMG in global manufacturing.

LGMG is on the road of internationalisation, moving forward steadily, building LGMG into an international brand.



R&D TEAM

LGMG sees that R&D and innovation are key for sustainable growth, and has therefore established the Provincial Level Innovation, for new product development and component reliability tests. In addition, LGMG has collaborated with a top Chinese university to establish the LGMG Research Institute, aiming to crack industry challenges and develop cutting edge technology, as well as have a profound effect on the cultivation on future talent for our industry.

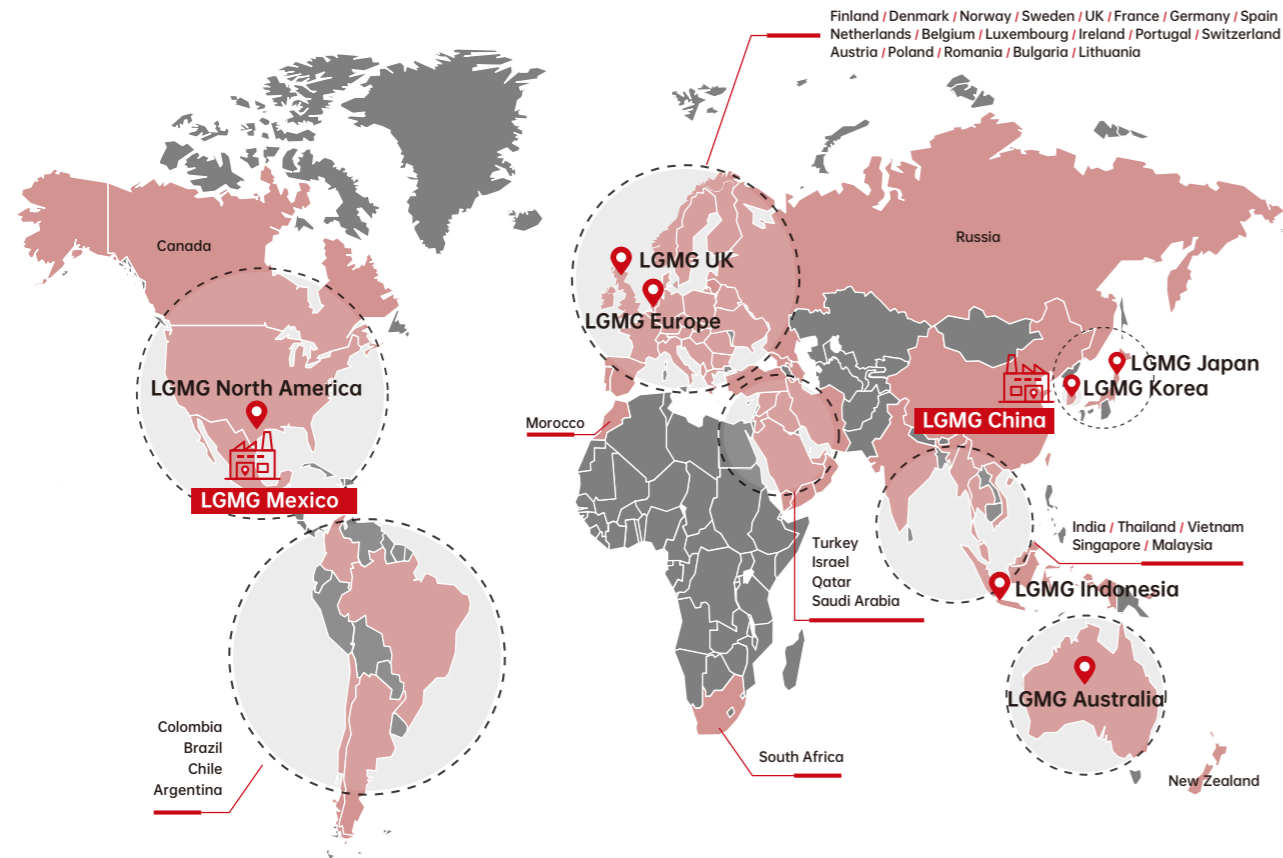


MANUFACTURING



LGMG strictly abides by its Lean Production System (LPS 6 PRINCIPLES) for each procedure, from parts welding and painting, to machine assembling and final product inspection, to ensure the highest production efficiency and the best quality.

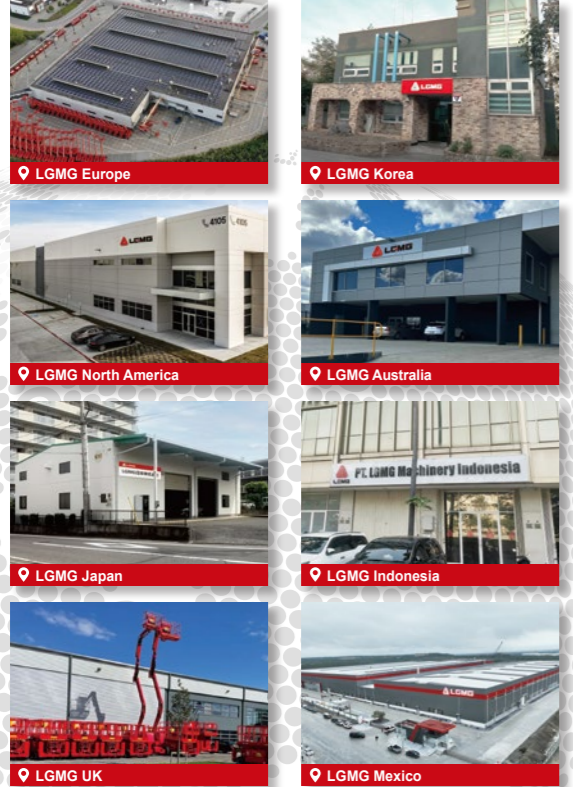
GLOBAL SALES NETWORK



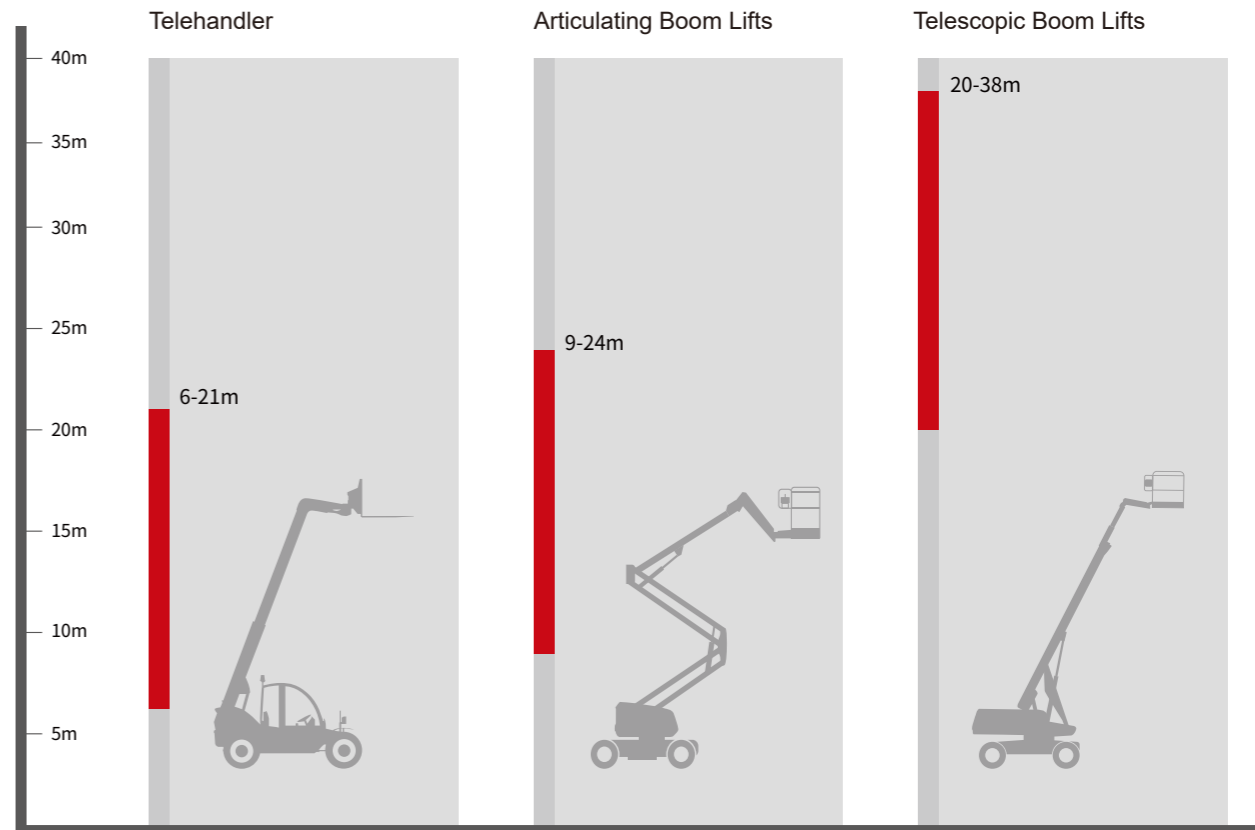
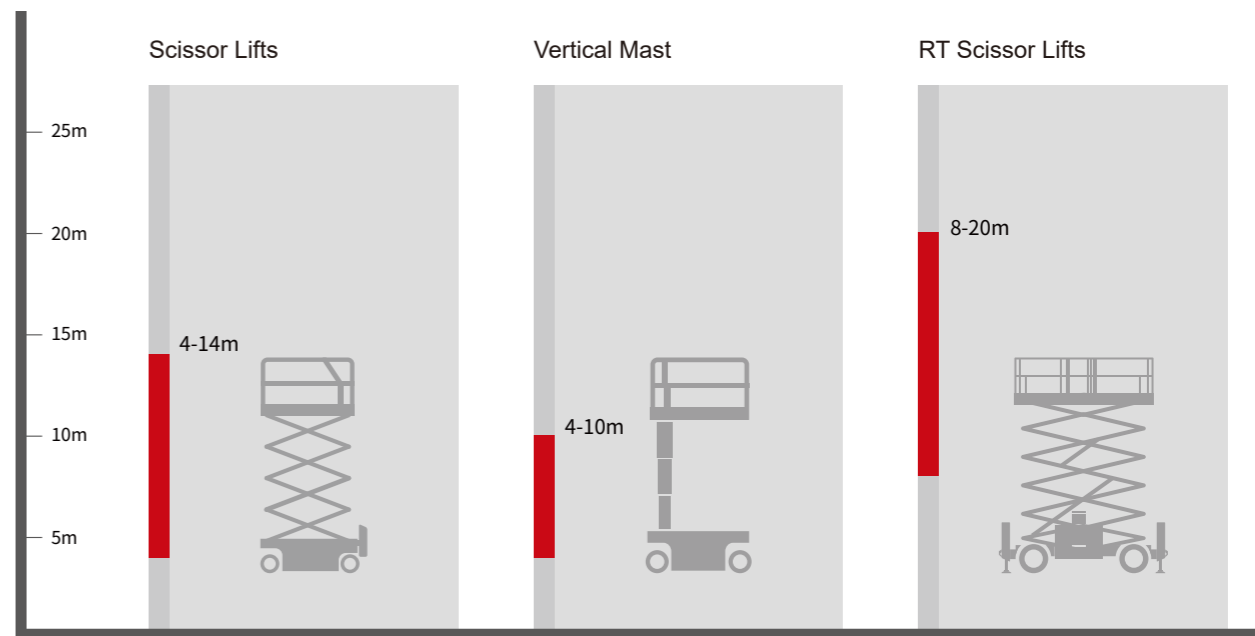
200+ PARTNERS **60+ COUNTRIES**

- LOCAL TEAM SUPPORT**
- LOCAL MACHINE DELIVERY**
- LOCAL SPARE PARTS**
- LOCAL FAST AND HIGH QUALITY SERVICE**
- LOCAL TRAINING**

The establishment of LGMG overseas subsidiaries have ensured quick and effective response time which fully meets our customers' requirements on machine inventory, parts and support with local professional teams. LGMG products have passed the major international standards such as CE, ANSI, Australia AS, CSA, KC, JIS, EAC. Products have been sold to over 200 partners in more than 60 countries around the world, including the U.S., Canada, the U.K., Germany, the Netherlands, Italy, Spain, Korea and Japan.



PRODUCT RANGE



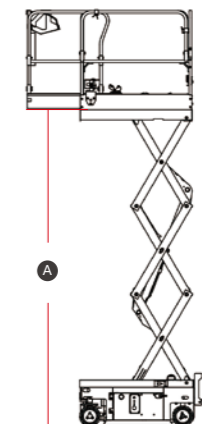
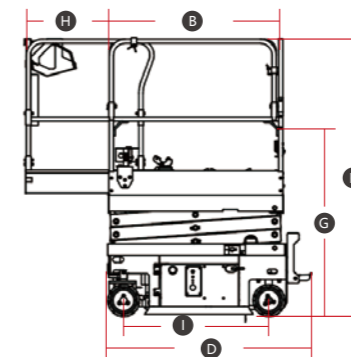
LGMG's micro scissors are ideal solutions for the low-level access and space restricted application job sites. Shorten overall machine length, lighter weight and compact design make the machine suitable for most elevators.

- Battery powered, zero emission, and quiet drive make the machine environmentally friendly.
- Efficient electric drive system provides longer-lasting performance and better gradeability.
- Exceptional waterproofed drive system design provides excellent performance in wet conditions.



SPECIFICATIONS

MODELS	SS0407ER (SS1230ER)		SS0507E (SS1432E)	
	Metric	Imperial	Metric	Imperial
Measurements				
Work Height Max.	5.6m	18'5"	6.3m	20'8"
A Platform Height-Raised	3.6m	11'10"	4.3m	14'1"
B Platform Length	1.27m	4'2"	1.35m	4'5"
C Platform Width	0.7m	2'4"	0.7m	2'4"
D Overall Length	1.47m	4'10"	1.53m	5'
E Overall Width	0.76m	2'6"	0.81m	2'8"
F Overall Height-Rails Up	2m	6'7"	2.15m	7'1"
G Overall Height-Rails Down	1.57m	5'2"	1.75m	5'9"
H Extension Deck	0.6m	2'	0.6m	2'
I Wheelbase	1.05m	3'5"	1.12m	3'8"
Ground Clearance (Stowed/Raised)	50/20mm	2"/0.8"	50/16mm	2"/0.6"
PRODUCTIVITY				
Max. Platform Occupancy (In/Out)	2 / 1	2 / 1	2 / 1	2 / 1
Platform Capacity	240kg	530 lbs	230kg	510 lbs
Platform Capacity-Extension	100kg	221 lbs	113kg	249 lbs
Drive Height	Full Height		Full Height	
Gradeability-Stowed	30%		25%	
Turning Radius-Outside	1.55m	5'1"	1.5m	4'11"
Raise/Lower Speed	25s / 18s		25s / 20s	
Brakes	Rear-wheel Brake		Front-wheel Brake	
Drive Mode	4x2		4x2	
Tire Type	Solid Non-marking		Solid Non-marking	
Tire Size	230x80mm	9"x3"	230x80mm	9"x3"
Ground Pressure, Tyres	602 kPa	87.3 psi	642 kPa	93.1 psi
POWER				
Power Source	24V DC (2x12V),100Ah,AGM		24V DC (2x12V),150Ah,FLA	
HYDRAULIC SYSTEM				
Hydraulic Oil Capacity	4L	1gal	4.5L	1gal
WEIGHT				
Machine Weight (CE/ANSI)	880kg	1,940 lbs	985kg	2,172 lbs





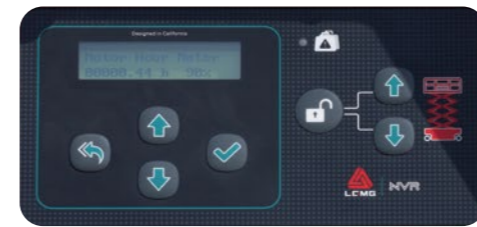
Entire range designed for indoor and outdoor use

New LGMG scissor lifts are all indoor-outdoor models, allowing two people to work on the platform indoors and one person outdoors, which is more aligned with customer requirements and improves efficiency on work sites.



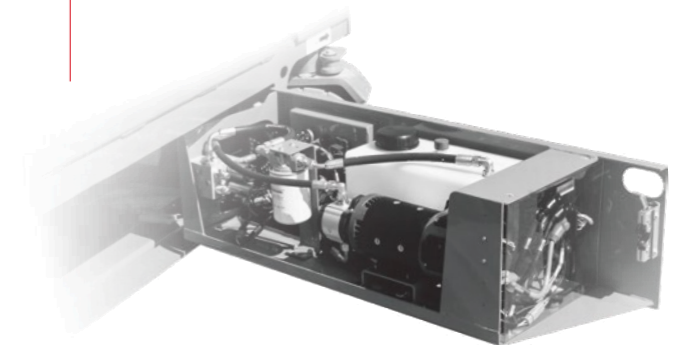
Large lower control panel

The lower control panel utilises a large display, which makes troubleshooting easier and more convenient. Multi-level menu design, multi-language support, and Bluetooth modules are available as optional.



Easier maintenance

Optimised design of internal components for a more rational arrangement and easier maintenance.



Universal key components

The key components of the second-generation models such as joysticks, drive motors, motor controllers, and chargers are highly interchangeable with existing models on the market, making it easy to replace them quickly and efficiently, to save costs for daily operation and maintenance.



Lithium battery configuration available

The entire S model range can be equipped with lithium battery, 100% maintenance-free, fast-charging, long-life, and full-power.



ELECTRIC MOTOR DRIVE SCISSOR LIFT

MODELS	S0607EII (S1932EII)		S0608EII		S0808EII (S2632EII)	
Measurements	Metric	Imperial	Metric	Imperial	Metric	Imperial
Work Height Max.	7.8m	25'7"	7.9m	25'11"	9.8/8m (in / out)	32'2"/26'3" (in / out)
A Platform Height-Raised	5.8m	19'	5.9m	19'4"	7.8/6m (in / out)	25'7"/19'8" (in / out)
B Platform Length	1.64m	5'5"	2.26m	7'5"	2.26m	7'5"
C Platform Width	0.73m	2'5"	0.79m	2'7"	0.79m	2'7"
D Overall Length	1.83m	6'	2.44m	8'	2.44m	8'
E Overall Width	0.79m	2'7"	0.83m	2'9"	0.83m	2'9"
F Overall Height-Guardrails Up	2.16m	7'1"	2.15m	7'1"	2.28m	7'6"
G Overall Height-Guardrails Down	1.81m	5'11"	1.79m	5'10"	1.9m	6'3"
H Extension Deck	0.9m	2'11"	0.9m	2'11"	0.9m	2'11"
I Wheelbase	1.35m	4'5"	1.85m	6'1"	1.85m	6'1"
Ground Clearance (Stowed/Raised)	78/26mm	3"/1"	100/20mm	4"/1"	100/20mm	4"/1"
PRODUCTIVITY						
Max. Platform Occupancy	2 (in) / 1 (out)		2 (in) / 1 (out)		2 (in) / 1 (out)	
Platform Capacity	230kg	510 lbs	380kg	838 lbs	230kg	510 lbs
Platform Capacity-Extension Deck	120kg	265 lbs	120kg	265 lbs	120kg	265 lbs
Drive Height	Full Height					
Gradeability-Stowed	25%	25%	25%	25%	25%	25%
Min. Turning Radius	1.8m	5'11"	2.2m	7'3"	2.2m	7'3"
Raise/Lower Speed	16s / 28s	16s / 28s	30s / 34s	30s / 34s	31s / 40s	31s / 40s
Brakes	Front-wheel Brake					
Drive Mode	4x2	4x2	4x2	4x2	4x2	4x2
Tire Type	Solid Non-marking					
Tire Size	323x100mm	12"x4"	380x130mm	15"x5"	380x130mm	15"x5"
Ground Pressure, Tyres	978 kPa	141.8 psi	/	/	1,002 kPa	145.3 psi
POWER						
Power Source	24V (4x6V),225Ah,FLA		24V (4x6V),225Ah,FLA		24V (4x6V),225Ah,FLA	
Power Source (Lithium Battery)	24V 160Ah		24V 160Ah		24V 160Ah	
HYDRAULIC SYSTEM						
Hydraulic Oil Capacity	5L	1.3gal	13L	3.4gal	13L	3.4gal
WEIGHT						
Machine Weight (CE/ANSI)	1,610kg	3,549 lbs	2,040kg	4,497 lbs	2,200kg	4,850 lbs

ELECTRIC MOTOR DRIVE SCISSOR LIFT

MODELS	S0812EII (S2646EII)		S1012EII (S3246EII)		S1212EII (S4046EII)		S1413EII (S4650EII)	
Measurements	Metric	Imperial	Metric	Imperial	Metric	Imperial	Metric	Imperial
Work Height Max.	10m	32'10"	12m	39'4"	14/9.5m (in / out)	45'11"/31'2" (in / out)	15.8/10m (in / out)	51'10"/32'9" (in / out)
A Platform Height-Raised	8m	26'3"	10m	32'10"	12/7.5m (in / out)	39'4"/24'7" (in / out)	13.8/8m (in / out)	45'3"/26'3" (in / out)
B Platform Length	2.26m	7'5"	2.26m	7'5"	2.26m	7'5"	2.64m	8'8"
C Platform Width	1.12m	3'8"	1.12m	3'8"	1.12m	3'8"	1.12m	3'8"
D Overall Length	2.49m	8'2"	2.49m	8'2"	2.49m	8'2"	2.8m	9'2"
E Overall Width	1.18m	3'10"	1.18m	3'10"	1.18m	3'10"	1.3m	4'3"
F Overall Height-Guardrails Up	2.36m	7'9"	2.49m	8'2"	2.63m	8'8"	2.74m	9'
G Overall Height-Guardrails Down	1.55m	5'1"	1.68m	5'6"	1.8m	5'11"	1.94m	6'4"
H Extension Deck	0.9m	2'11"	0.9m	2'11"	0.9m	2'11"	0.9m	2'11"
I Wheelbase	1.85m	6'1"	1.85m	6'1"	1.85m	6'1"	2.22m	7'3"
Ground Clearance (Stowed/Raised)	100/20mm	4"/1"	100/20mm	4"/1"	100/20mm	4"/1"	105/20mm	4"/1"
PRODUCTIVITY								
Max. Platform Occupancy	2 (in) / 1 (out)		2 (in) / 1 (out)		2 (in) / 1 (out)		2 (in) / 1 (out)	
Platform Capacity	450kg	990 lbs	320kg	705 lbs	320kg	705 lbs	320kg	705 lbs
Platform Capacity-Extension Deck	120kg	265 lbs	120kg	265 lbs	120kg	265 lbs	120kg	265 lbs
Drive Height	Full Height							
Gradeability-Stowed	25%		25%		25%		25%	
Min. Turning Radius	2.45m	8'	2.45m	8'	2.45m	8'	2.85m	9'4"
Raise/Lower Speed	35s / 40s		58s / 48s		65s / 60s		80s / 65s	
Brakes	Front-wheel Brake							
Drive Mode	4x2		4x2		4x2		4x2	
Tire Type	Solid Non-marking							
Tire Size	380x130mm	15"x5"	380x130mm	15"x5"	380x130mm	15"x5"	380x130mm	15"x5"
Ground Pressure, Tyres	1,154 kPa	167.4 psi	1,355 kPa	196.5 psi	1,277 kPa	185.2 psi	1,378 kPa	199.9 psi
POWER								
Power Source	24V (4x6V),240Ah,FLA		24V (4x6V),240Ah,FLA		24V (4x12V),300Ah,FLA		24V (4x12V),300Ah,FLA	
Power Source (Lithium Battery)	24V 230Ah		24V 230Ah		24V 230Ah		24V 230Ah	
HYDRAULIC SYSTEM								
Hydraulic Oil Capacity	16L	4.2gal	23L	6.1gal	23L	6.1gal	25.5L	6.7gal
WEIGHT								
Machine Weight (CE/ANSI)	2,318kg	5,110 lbs	2,995kg	6,603 lbs	2,970kg	6,548 lbs	3,500kg	7,716 lbs



HYDRAULIC MOTOR DRIVE SCISSOR LIFT

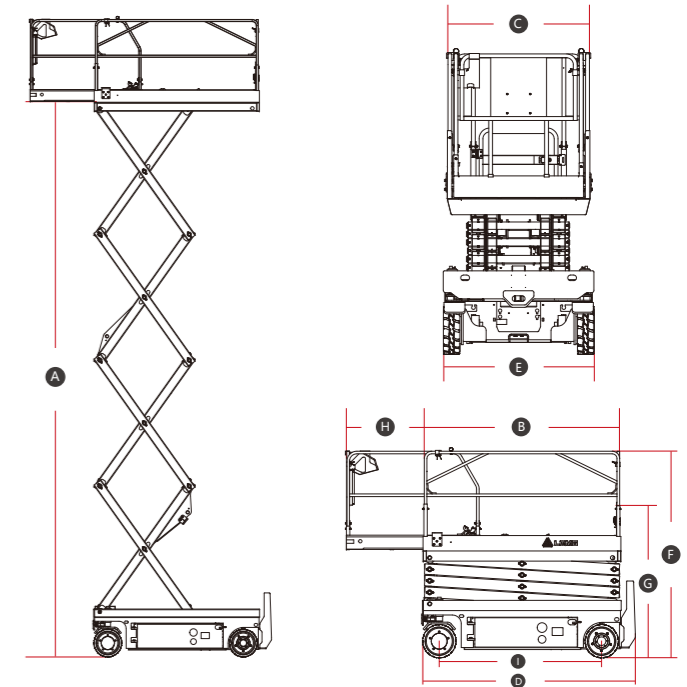
MODELS	S0607II (S1932II)		S0808II (S2632II)		S0812II (S2646II)	
Measurements	Metric	Imperial	Metric	Imperial	Metric	Imperial
Work Height Max.	7.8m	25'7"	9.8/8m (in / out)	32'2"/26'3" (in / out)	10m	32'10"
A Platform Height-Raised	5.8m	19'	7.8/6m (in / out)	25'7"/19'8" (in / out)	8m	26'3"
B Platform Length	1.64m	5'5"	2.26m	7'5"	2.26m	7'5"
C Platform Width	0.73m	2'5"	0.79m	2'7"	1.12m	3'8"
D Overall Length	1.83m	6'	2.44m	8'	2.49m	8'2"
E Overall Width	0.79m	2'7"	0.83m	2'9"	1.18m	3'10"
F Overall Height-Guardrails Up	2.16m	7'1"	2.28m	7'6"	2.36m	7'9"
G Overall Height-Guardrails Down	1.81m	5'11"	1.9m	6'3"	1.68m	5'6"
H Extension Deck	0.9m	2'11"	0.9m	2'11"	0.9m	2'11"
I Wheelbase	1.35m	4'5"	1.85m	6'1"	1.85m	6'1"
Ground Clearance (Stowed/Raised)	78/26mm	3"/1"	100/20mm	4"/1"	100/20mm	4"/1"
PRODUCTIVITY						
Max. Platform Occupancy	2 (in) / 1 (out)		2 (in) / 1 (out)		2 (in) / 1 (out)	
Platform Capacity	230kg	510 lbs	230kg	510 lbs	450kg	990 lbs
Platform Capacity-Extension Deck	120kg	265 lbs	120kg	265 lbs	120kg	265 lbs
Drive Height	Full Height					
Gradeability-Stowed	25%		25%		25%	
Min. Turning Radius	1.7m	5'7"	2.2m	7'3"	2.45m	8'
Raise/Lower Speed	16s / 28s		31s / 40s		35s / 40s	
Brakes	Rear-wheel Brake					
Drive Mode	4x2		4x2		4x2	
Tire Type	Solid Non-marking					
Tire Size	323x100mm	12"x4"	380x130mm	15"x5"	380x130mm	15"x5"
Ground Pressure, Tyres	978 kPa	141.8 psi	1,002 kPa	145.3 psi	1,154 kPa	167.4 psi
POWER						
Power Source	24V (4x6V),225Ah,FLA		24V (4x6V),225Ah,FLA		24V (4x6V),240Ah,FLA	
Power Source (Lithium Battery)	24V 160Ah		24V 160Ah		24V 230Ah	
HYDRAULIC SYSTEM						
Hydraulic Oil Capacity	9.5L	2.1gal	13L	3.4gal	16L	4.2gal
WEIGHT						
Machine Weight (CE/ANSI)	1,610kg	3,549 lbs	2,200kg	4,850 lbs	2,395kg	5,280 lbs

HYDRAULIC MOTOR DRIVE SCISSOR LIFT

MODELS	S1012II (S3246II)		S1212II (S4046II)		S1413II (S4650II)	
Measurements	Metric	Imperial	Metric	Imperial	Metric	Imperial
Work Height Max.	12m	39'4"	14/9.5m (in / out)	45'11"/31'2" (in / out)	15.8/10m (in / out)	51'10"/32'9" (in / out)
A Platform Height-Raised	10m	32'10"	12/7.5m (in / out)	39'4"/24'7" (in / out)	13.8/8m (in / out)	45'3"/26'3" (in / out)
B Platform Length	2.26m	7'5"	2.26m	7'5"	2.64m	8'8"
C Platform Width	1.12m	3'8"	1.12m	3'8"	1.12m	3'8"
D Overall Length	2.49m	8'2"	2.49m	8'2"	2.8m	9'2"
E Overall Width	1.18m	3'10"	1.18m	3'10"	1.3m	4'3"
F Overall Height-Guardrails Up	2.49m	8'2"	2.63m	8'8"	2.74m	9'
G Overall Height-Guardrails Down	1.71m	5'7"	1.84m	6'	1.94m	6'4"
H Extension Deck	0.9m	2'11"	0.9m	2'11"	0.9m	2'11"
I Wheelbase	1.85m	6'1"	1.85m	6'1"	2.22m	7'3"
Ground Clearance (Stowed/Raised)	100/20mm	4"/1"	100/20mm	4"/1"	105/20mm	4"/1"
PRODUCTIVITY						
Max. Platform Occupancy	2 (in) / 1 (out)		2 (in) / 1 (out)		2 (in) / 1 (out)	
Platform Capacity	320kg	705 lbs	320kg	705 lbs	320kg	705 lbs
Platform Capacity-Extension Deck	120kg	265 lbs	120kg	265 lbs	120kg	265 lbs
Drive Height	Full Height					
Gradeability-Stowed	25%		25%		25%	
Min. Turning Radius	2.45m	8'	2.45m	8'	2.85m	9'4"
Raise/Lower Speed	58s / 48s		65s / 60s		80s / 65s	
Brakes	Rear-wheel Brake					
Drive Mode	4x2		4x2		4x2	
Tire Type	Solid Non-marking					
Tire Size	380x130mm	15"x5"	380x130mm	15"x5"	380x130mm	15"x5"
Ground Pressure, Tyres	1,355 kPa	196.5 psi	1,277 kPa	185.2 psi	1,378 kPa	199.9 psi
POWER						
Power Source	24V (4x6V),240Ah,FLA		24V (4x12V),300Ah,FLA		24V (4x12V),300Ah,FLA	
Power Source (Lithium Battery)	24V 230Ah		24V 230Ah		24V 280Ah	
HYDRAULIC SYSTEM						
Hydraulic Oil Capacity	23L	6.1gal	23L	6.1gal	25.5L	6.7gal
WEIGHT						
Machine Weight (CE/ANSI)	2,995kg	6,603 lbs	2,970kg	6,548 lbs	3,500kg	7,716 lbs

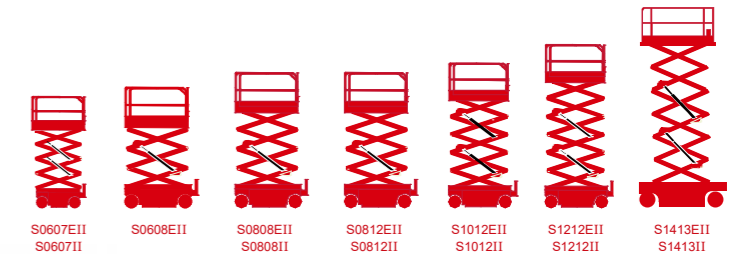
STANDARD FEATURES

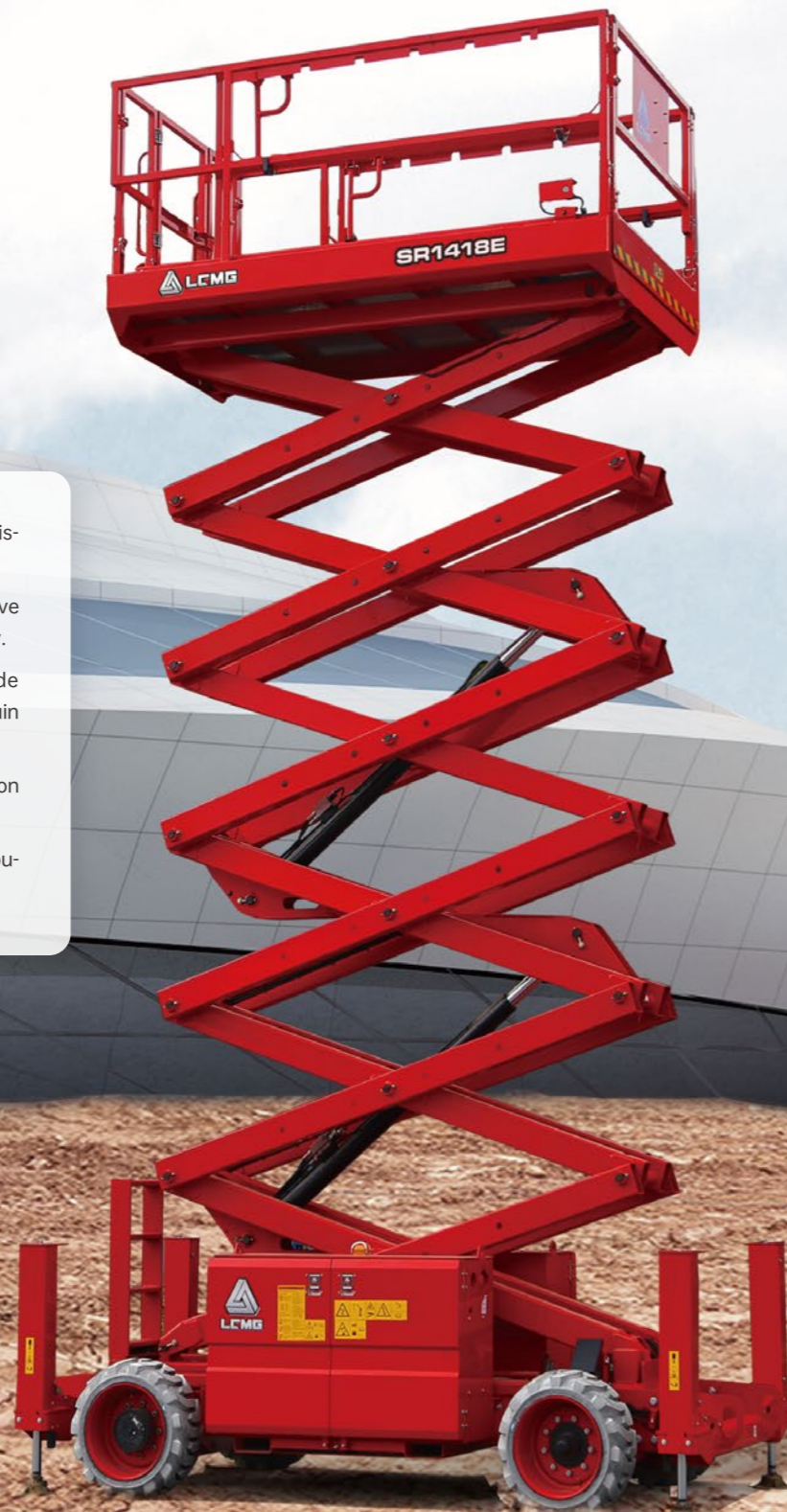
- Proportional control
- Foldable guardrail
- Manual brake release
- Emergency descent
- Pothole guard
- Self-lock entry gate
- All motions alarm
- Full-height drive
- Indoor and outdoor rated
- Emergency stop device
- Swing-out component tray
- Tilt alarm with lift cut-out
- Overload sensing system
- Descent alarm with flashing beacon
- Intelligent diagnostic system
- Solid non-marking tires



OPTIONAL

- AC power to platform
- Voice alarm system
- Telematics
- Anti-collision protection
- Maintenance-free battery
- Biodegradable hydraulic oil





- The large platform with high capacity maximises productivity.
- Battery powered, zero emission and quiet drive mean this machine is environmentally friendly.
- Equipped with oscillating axles that provide excellent performance in soft and rough terrain conditions.
- Hydraulic outriggers deliver a better solution on uneven ground.
- Intelligent self-diagnostic system for quick troubleshooting.

SPECIFICATIONS

MODELS	SR0818E (SR2669E)		SR1018E (SR3369E)		SR1218E (SR4069E)	
Measurements	Metric	Imperial	Metric	Imperial	Metric	Imperial
Work Height Max.	9.7m	31'10"	11.7m	38'5"	13.9m	45'7"
A Platform Height-Raised	7.7m	25'3"	9.7m	31'10"	11.9m	39'
B Platform Height-Stowed	1.41m	4'8"	1.41m	4'8"	1.56m	5'1"
C Platform Length	2.79m	9'2"	2.79m	9'2"	2.79m	9'2"
D Platform Width	1.6m	5'3"	1.6m	5'3"	1.6m	5'3"
E Overall Length	3.76m	12'4"	3.76m	12'4"	3.76m	12'4"
F Overall Width	1.79m	5'10"	1.79m	5'10"	1.79m	5'10"
G Overall Height-Rails up	2.58m	8'6"	2.55m	8'4"	2.7m	8'10"
Overall Height-Rails down	1.92m	6'4"	1.89m	6'2"	2.04m	6'8"
Extension Deck	1.52m	5'	1.52m	5'	1.52m	5'
H Wheelbase	2.29m	7'6"	2.29m	7'6"	2.29m	7'6"
Ground Clearance-Center	0.23m	9"	0.23m	9"	0.23m	9"
PRODUCTIVITY						
Max. Platform Occupancy(In/Out)	4 / 4		4 / 2		3 / 2	
Platform Capacity	680kg	1,499 lbs	454kg	1,001 lbs	365kg	805 lbs
Platform Capacity-Extension	140kg	310 lbs	140kg	310 lbs	140kg	310 lbs
Drive Height	Full Height		Full Height		Full Height	
Gradeability-Stowed	40%	40%	35%	35%	35%	35%
Min. Turning Radius	4.75m	15'7"	4.75m	15'7"	4.75m	15'7"
Raise/Lower Speed	35s / 30s		39s / 46s		61s / 55s	
Brakes	Rear-wheel Brake		Rear-wheel Brake		Rear-wheel Brake	
Drive Mode	4x2		4x2		4x2	
Tire Type	Foam-filled Non-marking		Foam-filled Non-marking		Foam-filled Non-marking	
Tire Size	663x283mm	26"x11"	663x283mm	26"x11"	663x283mm	26"x11"
Ground Pressure, Tyres	492.07 kPa	71.4 psi	526.37 kPa	76.3 psi	577.09 kPa	83.7 psi
POWER						
Power Source	48V DC (8x6V),315Ah,FLA		48V DC (8x6V),315Ah,FLA		48V DC (8x6V),315Ah,FLA	
HYDRAULIC SYSTEM						
Hydraulic Oil Volume	50L	13.21gal	70L	18.5gal	70L	18.5gal
WEIGHT						
Machine Weight (CE/ANSI)	4,190kg	9,237 lbs	4,350kg	9,570 lbs	5,100kg	11,245 lbs

SPECIFICATIONS

MODELS	SR1418E (SR4669E)		SR1623E(SR5390E)		SR2024E	
Measurements	Metric	Imperial	Metric	Imperial	Metric	Imperial
Work Height Max.	15.8m	51'10"	17.9m	58'9"	21.7m	71'2"
A Platform Height-Raised	13.8m	45'3"	15.9m	52'2"	19.7m	64'8"
B Platform Height-Stowed	1.75m	5'9"	2.13m	7'	2.62m	8'7"
C Platform Length	2.79m	9'2"	4.81m	15'9"	4.62m	15'2"
D Platform Width	1.6m	5'3"	1.83m	6'	2.3m	7'7"
E Overall Length	3.73m	12'3"	4.9m	16'1"	4.98m	16'4"
F Overall Width	1.84m	6'	2.3m	7'7"	2.49m	8'2"
G Overall Height-Rails up	2.9m	9'6"	3.23m	10'7"	3.72m	12'4"
Overall Height-Rails down	2.24m	7'4"	2.53m	8'4"	2.83m	9'3"
Extension Deck	1.5m	4'11"	1.45/1.14m	4'9"/3'9"	2.7m	8'10"
H Wheelbase	2.29m	7'6"	2.85m	9'4"	3.2m	10'6"
Ground Clearance-Center	0.23m	9"	0.26m	10"	0.3m	1'
PRODUCTIVITY						
Max. Platform Occupancy(In/Out)	2 / 2		4 / 4		4 / 4	
Platform Capacity	365kg	805 lbs	680kg	1,499 lbs	750kg	1,653 lbs
Platform Capacity-Extension	140kg	310 lbs	230kg	510 lbs	500kg	1,102 lbs
Drive Height	Full Height		8.5m	27'11"	Full Height	
Gradeability-Stowed	35%	35%	40%	40%	40%	40%
Min. Turning Radius	4.75m	15'7"	6.57m	21'7"	4.5m	14'9"
Raise/Lower Speed	80s / 60s		70s / 50s		100s / 70s	
Brakes	Rear-wheel Brake		Four-wheel Brake		Four-wheel Brake	
Drive Mode	4x2		4x4		4x4	
Tire Type	Solid Non-marking		Solid Non-marking		Foam-filled Non-marking	
Tire Size	663x283mm	26"x11"	835x290mm	33"x11"	936x355mm	37"x14"
Ground Pressure, Tyres	651.95 kPa	94.6 psi	888.31 kPa	128.8 psi	/	
POWER						
Power Source	48V DC (8x6V),390Ah,FLA		80V DC,228Ah		78V (13x6V),330Ah,AGM	
HYDRAULIC SYSTEM						
Hydraulic Oil Volume	50L	13.2gal	80L	21.1gal	100L	26.4gal
WEIGHT						
Machine Weight (CE/ANSI)	6,260kg	13,800 lbs	8,300kg	18,298 lbs	14,600kg	32,187 lbs

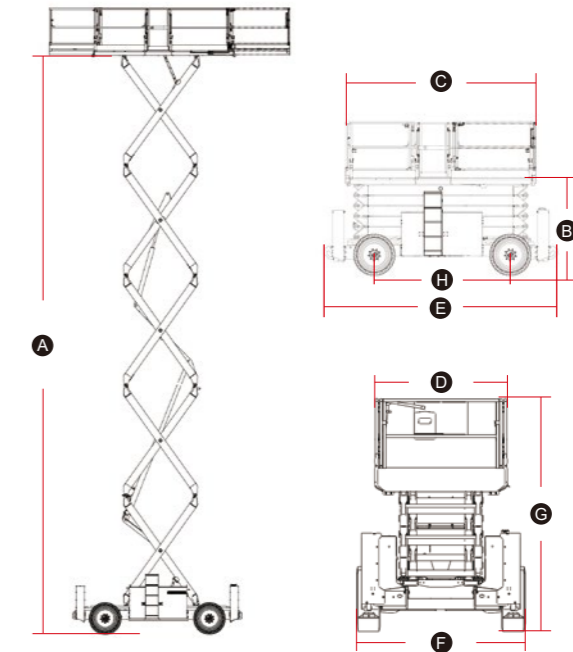
STANDARD FEATURES

- Proportional control
- Foldable guardrail
- Emergency stop device
- Manual brake release
- Emergency descent
- Oscillating axle
- Self-lock entry gate
- Tilt alarm with lift cut-out
- Overload sensing system
- Descent alarm with flashing beacon
- All motions alarm
- Intelligent diagnostic system
- AC power to platform

OPTIONAL

- Telematics
- Foam-filled tires
- Solid tires
- Biodegradable hydraulic oil

MACHINE SIZE





- Larger work platform with high capacity offers great productivity.
- Powerful diesel engine, oscillating axles and four-wheel drive provide better performance on most rough terrain job sites.
- The overload system and motion alarm help the operator to complete the job in a much safer way.
- Pull-out engine tray for easy access and maintenance.
- On-board self-diagnosis system makes it easier for quick troubleshooting.

SPECIFICATIONS

MODELS	SR0818D (SR2669D)		SR1018D (SR3369D)		SR1218D (SR4069D)	
Measurements	Metric	Imperial	Metric	Imperial	Metric	Imperial
Work Height Max.	9.7m	31'10"	11.7m	38'5"	13.9m	45'7"
A Platform Height-Raised	7.7m	25'3"	9.7m	31'10"	11.9m	39'1"
B Platform Height-Stowed	1.41m	4'8"	1.41m	4'8"	1.56m	5'1"
C Platform Length	2.79m	9'2"	2.79m	9'2"	2.79m	9'2"
D Platform Width	1.6m	5'3"	1.6m	5'3"	1.6m	5'3"
E Overall Length	3.76m	12'4"	3.76m	12'4"	3.76m	12'4"
F Overall Width	1.79m	5'10"	1.79m	5'10"	1.79m	5'10"
G Overall Height-Rails up	2.58m	8'6"	2.55m	8'4"	2.7m	8'10"
Overall Height-Rails down	1.92m	6'4"	1.89m	6'2"	2.04m	6'8"
Extension Deck	1.52m	5'	1.52m	5'	1.52m	5'
H Wheelbase	2.29m	7'6"	2.29m	7'6"	2.29m	7'6"
Ground Clearance-Center	0.23m	9"	0.23m	9"	0.23m	9"
PRODUCTIVITY						
Max. Platform Occupancy(in/out)	4 / 4		4 / 2		3 / 2	
Platform Capacity	680kg	1,499 lbs	454kg	1,000 lbs	365kg	805 lbs
Platform Capacity-Extension	140kg	310 lbs	140kg	310 lbs	140kg	310 lbs
Drive Height	Full Height		Full Height		Full Height	
Gradeability-Stowed	40%	40%	35%	35%	35%	35%
Min. Turning Radius	4.75m	15'7"	4.75m	15'7"	4.75m	15'7"
Raise/Lower Speed	35s / 30s		39s / 46s		61s / 55s	
Brakes	Four-wheel Brake		Four-wheel Brake		Four-wheel Brake	
Drive Mode	4x4		4x4		4x4	
Tire Type	RT Foam-filled		RT Foam-filled		RT Foam-filled	
Tire Size	663x283mm	26"x11"	663x283mm	26"x11"	663x283mm	26"x11"
Ground Pressure, Tyres	490.41 kPa	71.1 psi	524.48 kPa	76.1 psi	575.46 kPa	83.5 psi
POWER						
Power Source	Kubota 18.5kW/24.8hp		Kubota 18.5kW/24.8hp		Kubota 18.5kW/24.8hp	
Fuel Tank Capacity	53L	14gal	53L	14gal	53L	14gal
HYDRAULIC SYSTEM						
Hydraulic Oil Volume	50L	13.2gal	50L	13.2gal	50L	13.2gal
WEIGHT						
Machine Weight (CE/ANSI)	4,170kg	9,193 lbs	4,330kg	9,545 lbs	5,080kg	11,200 lbs

SPECIFICATIONS

MODELS	SR1023D (SR3390D)		SR1323D (SR4390D)		SR1623D (SR5390D)	
Measurements	Metric	Imperial	Metric	Imperial	Metric	Imperial
Work Height Max.	12m	39'4"	15m	49'3"	17.9m	58'9"
A Platform Height-Raised	10m	32'10"	13m	42'8"	15.9m	52'2"
B Platform Height-Stowed	1.58m	5'2"	1.83m	6'	2.08m	6'10"
C Platform Length	3.98/4.81m	13'1"/15'9"	3.98/4.81m	13'1"/15'9"	3.98/4.81m	13'1"/15'9"
D Platform Width	1.83m	6'	1.83m	6'	1.83m	6'
E Overall Length (with ladder)	4.9m	16'1"	4.9m	16'1"	4.9m	16'1"
F Overall Width	2.3m	7'7"	2.3m	7'7"	2.3m	7'7"
G Overall Height-Rails up	2.74m	9'	2.96m	9'9"	3.18m	10'5"
Overall Height-Rails down	2.06m	6'9"	2.28m	7'6"	2.5m	8'2"
Extension Deck	1.45/1.14m	4'9"/3'9"	1.45/1.14m	4'9"/3'9"	1.45/1.14m	4'9"/3'9"
H Wheelbase	2.85m	9'4"	2.85m	9'4"	2.85m	9'4"
Ground Clearance-Center	0.23m	9"	0.23m	9"	0.23m	9"
PRODUCTIVITY						
Max. Platform Occupancy(in/out)	7 / 7		7 / 7		4 / 4	
Platform Capacity	1,100kg	2,430 lbs	680kg	1,500 lbs	680kg	1,500 lbs
Platform Capacity-Extension	230kg	510 lbs	230kg	510 lbs	230kg	510 lbs
Drive Height	Full Height		Full Height		8.5m	27'11"
Gradeability-Stowed	40%	40%	40%	40%	40%	40%
Min. Turning Radius	5.33m	17'6"	5.33m	17'6"	5.33m	17'6"
Raise/Lower Speed	45s / 45s		55s / 55s		55s / 55s	
Brakes	Four-wheel Brake		Four-wheel Brake		Four-wheel Brake	
Drive Mode	4x4		4x4		4x4	
Tire Type	Solid		Solid		Solid	
Tire Size	835x290mm	33"x11"	835x290mm	33"x11"	835x290mm	33"x11"
Ground Pressure, Tyres	887.37 kPa	128.7 psi	887.71 kPa	128.8 psi	888.31 kPa	128.8 psi
POWER						
Power Source	Deutz 36.4kW/48.8hp Kubota 36kW/48.3hp		Deutz 36.4kW/48.8hp Kubota 36kW/48.3hp		Deutz 36.4kW/48.8hp Kubota 36kW/48.3hp	
Fuel Tank Capacity	100L	26.4gal	100L	26.4gal	100L	26.4gal
HYDRAULIC SYSTEM						
Hydraulic Oil Volume	140L	37gal	140L	37gal	140L	37gal
WEIGHT						
Machine Weight (7.4m platform)	6,980kg	15,400 lbs	7,460kg	16,450 lbs	8,200kg	18,080 lbs
Machine Weight (6.58m platform)	6,880kg	15,170 lbs	7,360kg	16,230 lbs	8,100kg	17,860 lbs

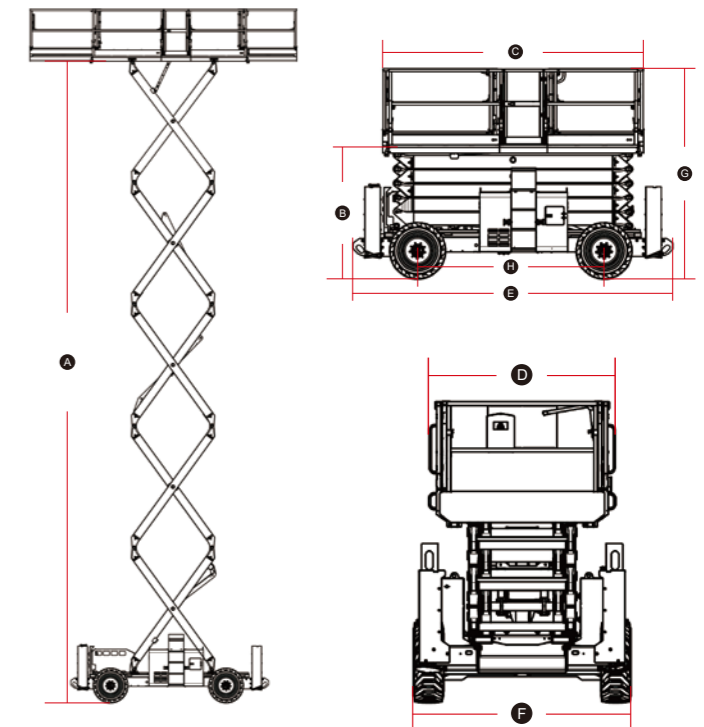
STANDARD FEATURES

- Proportional control
- Foldable guardrail
- Emergency stop device
- Manual brake release
- Emergency descent
- Oscillating axle
- Self-lock entry gate
- Tilt alarm with lift cut-out
- Overload sensing system
- Descent alarm with flashing beacon
- All motions alarm
- Intelligent diagnostic system
- AC power to platform

OPTIONAL

- Telematics
- Cold weather package
- Pipe racks (SR1023D / SR1323D / SR1623D)
- Solid non-marking tires
- Foam-filled non-marking tires

MACHINE SIZE



CRAWLER SCISSOR LIFT

LGMG's crawler scissor lift is easy to drive on slopes or uneven ground, and has excellent obstacle-surpassing performance, which is suited to environments with low ground pressure. Compact in size, with 360 degrees turning on the spot, suitable for use in narrow spaces. Humanised design, simple operation and convenient maintenance.



SPECIFICATIONS

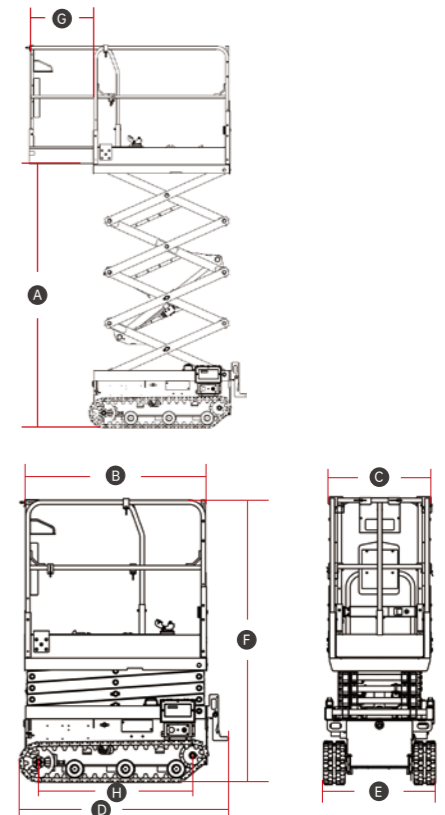
MODELS	SC0407E (SC1532E)		SC0610E (SC2240E)	
	Metric	Imperial	Metric	Imperial
Measurements				
Work Height Max.	6.5m	21'4"	8.8m	28'10"
A Platform Height - Raised	4.5m	14'9"	6.8m	22'4"
B Platform Length	1.29m	4'3"	1.9m	6'3"
C Platform Width	0.7m	2'4"	0.73m	2'5"
D Overall Length	1.5m	4'11"	2.05m	6'9"
E Overall Width	0.78m	2'7"	0.99m	3'3"
F Overall Height - Guardrails Up	1.99m	6'6"	2.19m	7'2"
G Extension Deck	0.6m	2'	0.9m	2'11"
H Wheelbase	0.95m	3'1"	1.55m	5'1"
Ground Clearance	118mm	5"	115mm	5"
PRODUCTIVITY				
Max. Platform Occupancy	1 (in) / 0 (out)		2 (in) / 1 (out)	
Platform Capacity	200kg	441 lbs	250kg	551 lbs
Platform Capacity - Extension Deck	115kg	254 lbs	120kg	265 lbs
Gradeability-Stowed	25%	25%	25%	25%
Min. Turning Radius	Turning on the spot		Turning on the spot	
Raise/Lower Speed	20s / 20s	20s / 20s	36s / 36s	36s / 36s
POWER				
Power Source	24V((2x12V), 130Ah, AGM)		24V((4x12V), 230Ah, AGM)	
HYDRAULIC SYSTEM				
Hydraulic Oil Capacity	4L	1gal	5.5L	1.4gal
WEIGHT				
Machine Weight (CE/ANSI)	800kg	1,764 lbs	1,600kg	3,528 lbs

STANDARD FEATURES

- Proportional control
- Emergency stop device
- Emergency descent
- Self-lock entry gate
- Tilt alarm with lift cut-out
- Overload sensing system
- Descent alarm with flashing beacon
- All motions alarm
- Intelligent diagnostic system
- Foldable ladder
- Non-marking crawlers
- Maintenance-free battery

OPTIONS

- AC power to platform
- Telematics
- Voice alarm system
- Biodegradable hydraulic oil





- Narrow chassis, low stowed height, can be transported easily through doorways and in passenger elevators.
- Small inside turning radius allows for flexible use in narrow spaces, improving work efficiency.
- One-side extension deck enlarges the working scope and enhances productivity.
- Intelligent self-diagnostic system for quick troubleshooting.

SPECIFICATIONS

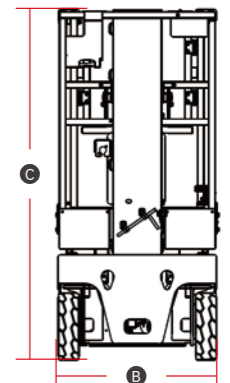
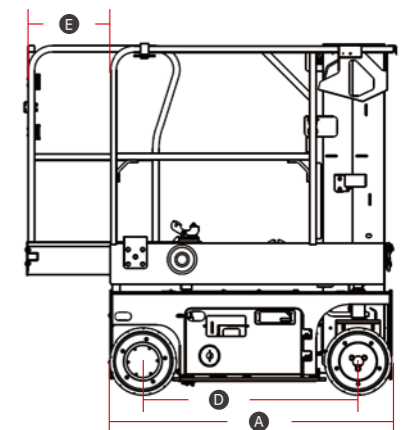
MODELS	M0407TE (M1230TE)		M0608TE (M1932TE)	
	Metric	Imperial	Metric	Imperial
Measurements				
Working Height Max.	5.7m	18'8"	7.6/6.2m in/out	24'11"/20'4" in/out
Platform Height	3.7m	12'2"	5.6/4.2m in/out	18'4"/13'9" in/out
Platform Size	1.33x0.75m	52"x30"	0.98x0.76m	39"x30"
A Overall Length	1.39m	4'7"	1.4m	4'7"
B Overall Width	0.76m	2'6"	0.79m	2'7"
C Overall Height (Stowed)	1.69m	5'6"	1.99m	6'6"
D Wheelbase	1.04m	3'5"	1.15m	3'9"
E Extension Deck	0.4m	1'4"	0.5m	1'8"
Ground Clearance (Stowed)	68mm	3"	68mm	3"
PRODUCTIVITY				
Max. Platform Occupancy	1 (in) / 0 (out)		1 (in) / 1 (out)	
Platform Capacity	230kg	507 lbs	200kg	441 lbs
Platform Capacity-Extension Deck	113kg	249 lbs	113kg	249 lbs
Drive Mode	Front-wheel Brake		Rear wheels drive	
Drive speed (Stowed)	4km/h	2.5mph	4km/h	2.5mph
Drive speed (Raised)	0.5km/h	0.31mph	0.5km/h	0.31mph
Gradeability	25%		25%	
Tire size	323x100mm	13"x4"	250x80mm	10"x3"
POWER				
Power Source	24V (2x12V),145Ah,AGM		24V (2x12V),145Ah,AGM	
HYDRAULIC SYSTEM				
Hydraulic Oil Capacity	5.5L	1.5gal	4.5L	1.2 gal
WEIGHT				
Machine Weight	840kg	1,852 lbs	1,150kg	2,535 lbs

STANDARD FEATURES

- Proportional control
- Horn/Hour meter
- Emergency stop device
- Emergency descent
- Charging protection system
- Descent alarm with flashing beacon
- Pothole guard
- Full-height drive
- Tilt alarm
- Platform tool box
- Telematics connector

OPTIONS

- AC power to platform
- Telematics
- Biodegradable hydraulic oil





- Indoor and outdoor use, adaptable to diverse job sites.
- Compact size, easy to operate and transport.
- Eco-friendly, zero-emission, highly efficient electric drive, more productive with longer working hours.
- Intelligent self-diagnostic system for quick troubleshooting.

SPECIFICATIONS

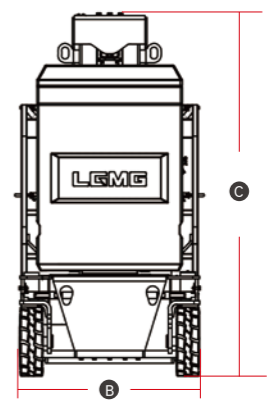
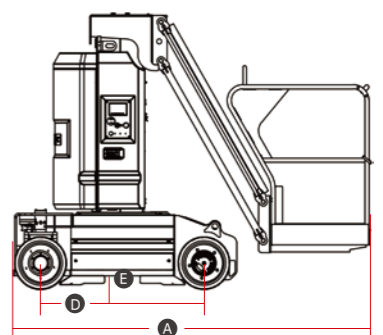
MODELS	M0810JE (M2640JE)		M1012JE	
Measurements	Metric	Imperial	Metric	Imperial
Working Height Max.	10m	32'10"	12.5m	41'
Platform Height (Raised)	8m	26'3"	10.5m	34'5"
Horizontal Outreach	3.2m	10'6"	5.55m	18'3"
Up and Over Clearance Max.	6.6m	21'8"	7m	23'
Platform Size (LxW)	0.98x0.72m	39"x28"	0.76x1.17m	30"x46"
A Overall Length	2.6m	8'6"	3.73m	12'3"
B Overall Width	1m	3'3"	1.2m	3'11"
C Overall Height (Stowed)	1.99m	6'6"	1.99m	6'6"
D Wheelbase	1.2m	3'11"	1.61m	5'3"
E Ground Clearance	0.1m	4"	0.1m	4"
PRODUCTIVITY				
Max. Platform Occupancy	2 (in) / 1 (out)		2 (in) / 2 (out)	
Platform Capacity	200kg	440 lbs	200kg	440 lbs
Drive Mode	Rear-wheels Drive		Rear-wheels Drive	
Turntable Rotation	345°	345°	345°	345°
Max. Drive Speed (Stowed)	3.5km/h	2.2mph	5.5km/h	3.4mph
Max. Drive Speed (Raised)	0.43km/h	0.27mph	0.75km/h	0.47mph
Gradeability	25%	25%	25%	25%
Tire Size	380x130mm	15"x5"	457x178mm	18"x7"
POWER				
Power Source	24V,250Ah,FLA		24V,225Ah,FLA	
HYDRAULIC SYSTEM				
Hydraulic Oil Capacity	6.5L	1.7gal	6.5L	1.7gal
WEIGHT				
Machine Weight	2,720kg	5,997 lbs	4,900kg	10,803 lbs

STANDARD FEATURES

- Proportional control
- Horn/Hour meter
- Emergency stop device
- Full-height drive
- All motions alarm
- Charge protection system
- Manual emergency pump
- Brake release
- Emergency descent
- Tilt alarm
- Descent alarm with flashing beacon
- Telematics connector
- Solid non-marking tires

OPTIONS

- AC power to platform
- Telematics
- Anti-collision protection
- Biodegradable hydraulic oil



ELECTRIC ARTICULATING BOOM LIFT

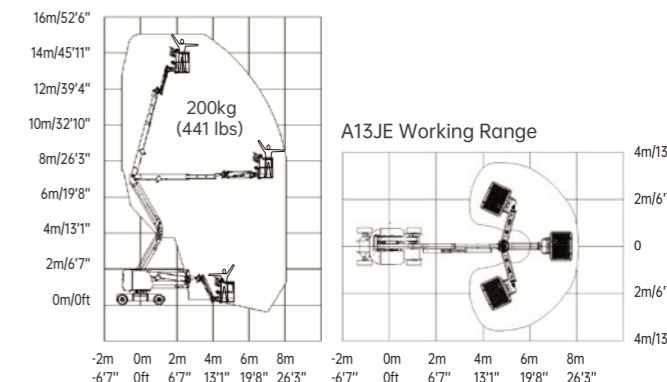
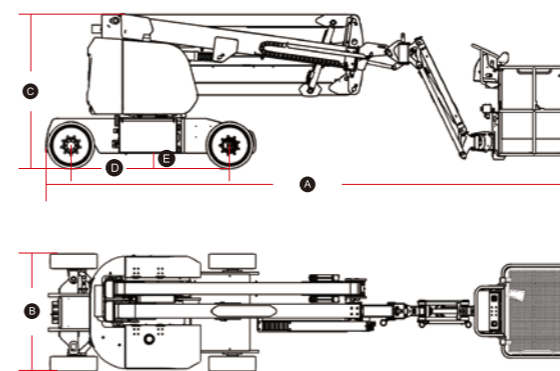
LGMG electric articulating boom aerial work platforms provide environmentally friendly, zero-emission operation for indoor and outdoor applications. The maximum working height ranges from 11 to 26.6 meters (36'1"/87'3").

- Proportional control ensures smooth driving, precise positioning and comfortable operation.
- Battery powered, zero emission, quiet drive and long battery duty cycle.
- Self-leveling platform together with hydraulic jib rotation delivers exceptional productivity.
- Intelligent self-diagnosis system for quick troubleshooting.
- AR20JE and AR24JE are equipped with the oscillating, full-time active oscillation of axles, and three steering modes: four-wheel steering, crab steering and front-wheel steering.



SPECIFICATIONS

MODELS	A09JE (A30JE)		A13JE (A43JE)	
Measurements	Metric	Imperial	Metric	Imperial
Work Height Max.	11m	36'1"	15m	49'3"
Platform Height Max.	9m	29'6"	13m	42'8"
Horizontal Outreach	6.25m	20'6"	7.46m	24'6"
Up and Over Height	4.12m	13'6"	7.1m	23'4"
Platform Length	1.17m	3'10"	1.2m	3'11"
Platform Width	0.76m	2'6"	0.9m	2'11"
A Stowed Length	5.46m	17'11"	6.7m	22'
Length-Transport (jib tucked)	3.58m	11'9"	5.35m	17'7"
B Overall Width	1.19m	3'11"	1.5m	4'11"
C Stowed Height	2m	6'7"	1.98m	6'6"
Height-Transport	2.52m	8'3"	2.11m	6'11"
D Wheelbase	1.58m	5'2"	2.03m	6'8"
E Ground Clearance	0.09m	4"	0.2m	8"
PRODUCTIVITY				
Platform Capacity (unrestricted)	230kg	510 lbs	200kg	440 lbs
Platform Capacity (restricted)	/	/	/	/
Max. Platform Occupancy	2		2	
Turntable Rotation	355°	355°	355°	355°
Drive Speed-Stowed	5km/h	3.1mph	5km/h	3.1mph
Drive Speed-Raised	0.65km/h	0.4mph	0.8km/h	0.5mph
Gradeability	30%	30%	30%	30%
Max. Wind Speed	12.5m/s	28mph	12.5m/s	28mph
Turning Radius-Inside	1.65m	5'5"	2.2m	7'3"
Turning Radius-Outside	3.15m	10'4"	4.07m	13'4"
Max. Slope	2.5°/4.5°	2.5°/4.5°	3°/3°	3°/3°
Tire Type	Solid Non-marking		Solid Non-marking	
Tire Models	22x7		600x190	
Ground Pressure, Tyres	715 kPa	103.7 psi	1584.7 kPa	229.8 psi
POWER				
Lead-acid Battery	48V(8x6V),390Ah,FLA		48V(8x6V),330Ah,AGM	
Lithium Battery	/		48V 250Ah (A13JE-Li)	
HYDRAULIC SYSTEM				
Hydraulic Oil Volume	17L	4.5gal	25L	6.6gal
WEIGHT				
Machine Weight (CE/ANSI)	6,700kg	14,771 lbs	6,950kg	15,322 lbs



SPECIFICATIONS

MODELS	A14JE (A45JE)		AR20JE (AR65JE)		AR24JE (AR80JE)	
	Metric	Imperial	Metric	Imperial	Metric	Imperial
Measurements						
Work Height Max.	15.8m	51'10"	21.58m	70'10"	26.6m	87'3"
Platform Height Max.	13.8m	45'3"	19.58m	64'3"	24.6m	80'9"
Horizontal Outreach	7.81m	25'7"	12.37m	40'7"	18m	59'1"
Up and Over Height	7.26m	23'10"	8.19m	26'10"	8.83m	28'11"
Platform Length	1.83m	6'	2.44m	8'	2.44m	8'
Platform Width	0.76m	2'6"	0.9m	2'11"	0.9m	2'11"
Ⓐ Stowed Length	6.66m	21'10"	9.42m	30'11"	11.6m	36'1"
Length-Transport (jib tucked)	5.85m	19'2"	7.63m	25'	9.07m	29'9"
Ⓑ Overall Width	1.8m	5'11"	2.5m	8'2"	2.5m	8'2"
Ⓒ Stowed Height	1.98m	6'6"	2.46m	8'1"	2.83m	9'3"
Height-Transport	2.6m	8'6"	2.96m	9'9"	3.36m	11'
Ⓓ Wheelbase	2.03m	6'8"	2.51m	8'3"	2.85m	9'4"
Ⓔ Ground Clearance	0.24m	9"	0.4m	1'4"	0.4m	1'4"
PRODUCTIVITY						
Platform Capacity (unrestricted)	230kg	510 lbs	260kg	573 lbs	250kg	551 lbs
Platform Capacity (restricted)	/	/	350kg	772 lbs	350kg	772 lbs
Max. Platform Occupancy	2		2 (unrestricted) / 3 (restricted)		2 (unrestricted) / 3 (restricted)	
Turntable Rotation	355°	355°	360°	360°	360°	360°
Drive Speed-Stowed	4.8km/h	3mph	5km/h	3.1mph	5km/h	3.1mph
Drive Speed-Raised	1km/h	0.62mph	0.8km/h	0.5mph	0.8km/h	0.5mph
Gradeability	30%	30%	45%	45%	45%	45%
Max. Wind Speed	12.5m/s	28mph	12.5m/s	28mph	12.5m/s	28mph
Turning Radius-Inside	1.83m	6'	1.9m	6'3"	2.04m	6'8"
Turning Radius-Outside	4.1m	13'5"	3.9m	12'10"	4.13m	13'7"
Max. Slope	3°/3°	3°/3°	4°/4°	4°/4°	5°/5°	5°/5°
Tire Type	Foam-filled Non-marking		Foam-filled Non-marking		Foam-filled non-marking	
Tire Models	9-14.5		355/55D625		15-625	
Ground Pressure, Tyres	820.8 kPa	119 psi	523.12 kPa	75.9 psi	874.13 kPa	126.8 psi
POWER						
Lead-acid Battery	48V(8x6V),390Ah,FLA		/		/	
Lithium Battery	48V 280Ah (A14JE-Li)		80V 271Ah		80V 460Ah	
HYDRAULIC SYSTEM						
Hydraulic Oil Volume	30L	7.9gal	105L	27.7gal	105L	27.7gal
WEIGHT						
Machine Weight (CE/ANSI)	7,500kg	16,535 lbs	9,700kg	21,385 lbs	17,300kg	38,139 lbs

STANDARD FEATURES

- Proportional control
- Horn/Hour meter
- Tilt alarm with lift cut-out
- Emergency stop button
- Anti-collision protection
- Platform auto-leveling system
- Platform tool box (A14JE/AR20JE/AR24JE)
- AC power to platform
- Full-height drive
- Overload sensing system
- Descent alarm with flashing beacon
- Telematics connector
- On-board diagnostic system

OPTIONAL

- Telematics
- Solid tires
- Biodegradable hydraulic oil
- Half-height mesh platform (AR20JE/AR24JE)
- Auxiliary rail (AR20JE/AR24JE)

PART 8

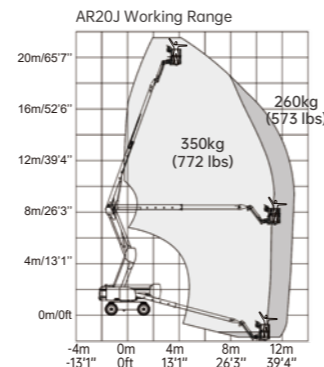
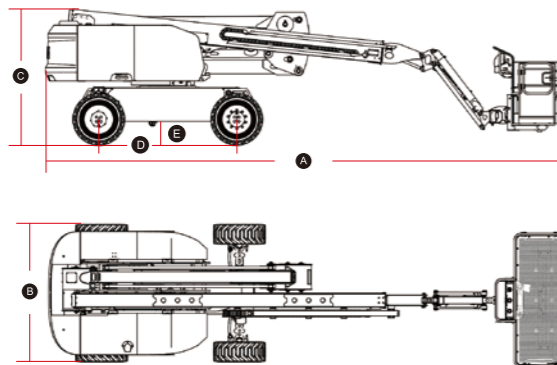
DIESEL ARTICULATING BOOM LIFT

LGMG diesel-powered articulating boom aerial work platforms designed for outdoor construction and industrial applications, with the maximum working height ranging from 12.75 to 26.6 meters (41'10"/87'3").

- The oscillating axles and four-wheel drive deliver better gradeability on rough terrain.
- Proportional smooth driving, precise positioning and comfortable operation.
- Self-leveling platform together with hydraulic jib rotation delivers exceptional productivity.
- Swing out engine tray for easy access and maintenance.
- Intelligent self-diagnostic system for quick troubleshooting.
- AR14J-H, AR20J and AR24J are fitted with the full-time active oscillating axle and three steering models: four-wheel steering, crab steering and front-wheel steering.

SPECIFICATIONS

MODELS	AR11J (AR35J)		AR14J (AR45J)		AR14J-H (AR45J-H)	
Measurements	Metric	Imperial	Metric	Imperial	Metric	Imperial
Work Height Max.	12.75m	41'10"	16.09m	52'9"	15.9m	52'2"
Platform Height	10.75m	35'3"	14.09m	46'3"	13.9m	45'7"
Horizontal Outreach	6.78m	22'3"	7.67m	25'2"	7.7m	25'3"
Up and Over Height	5.32m	17'5"	7.56m	24'10"	7.4m	24'3"
Platform Length	1.42m	4'8"	1.83m	6'	1.83m	6'
Platform Width	0.76m	2'6"	0.76m	2'6"	0.76m	2'6"
Ⓐ Stowed Length	5.77m	18'11"	6.77m	22'3"	6.95m	22'10"
Length-Transport (jib tucked)	4.46m	14'8"	5.76m	18'11"	5.9m	19'4"
Ⓑ Overall Width	1.85m	6'1"	2.31m	7'7"	2.3m	7'7"
Ⓒ Stowed Height	2.06m	6'9"	2.17m	7'1"	2.24m	7'4"
Height-Transport	2.29m	7'6"	2.65m	8'8"	2.65m	8'8"
Ⓓ Wheelbase	1.88m	6'2"	2.06m	6'9"	2.25m	7'5"
Ⓔ Ground Clearance	0.19m	7"	0.36m	1'2"	0.35m	1'2"
PRODUCTIVITY						
Platform Capacity (unrestricted)	270kg	595 lbs	230kg	510 lbs	300kg	661 lbs
Platform Capacity (restricted)	/	/	/	/	450kg	992 lbs
Max. Platform Occupancy	2		2		2 (unrestricted) / 3 (restricted)	
Turntable Rotation	355°	355°	355°	355°	355°	355°
Drive Speed-Stowed	5km/h	3.1mph	6.1km/h	3.8mph	5km/h	3.1mph
Drive Speed-Raised	0.8km/h	0.5mph	0.8km/h	0.5mph	0.8km/h	0.5mph
Gradeability	45%	45%	45%	45%	45%	45%
Max. Wind Speed	12.5m/s	28mph	12.5m/s	28mph	12.5m/s	28mph
Turning Radius-Inside	2.6m	8'6"	1.94m	6'4"	1.67m	5'6"
Turning Radius-Outside	4.7m	15'5"	4.41m	14'6"	3.66m	12'
Max. Slope	3°/4.5°	3°/4.5°	4.5°/4.5°	4.5°/4.5°	5°/5°	5°/5°
Tire Type	Foam-filled non-marking		RT Foam-filled		RT Foam-filled	
Tire Models	10-16.5		315/55D20		315/55D20	
Ground Pressure, Tyres	289 kPa	41.9 psi	578.89 kPa	84 psi	520 kPa	75.4 psi
POWER						
Power Source	Kubota 18.2kW/24.4hp		Kubota 36kW/48.3hp Deutz 36.4kW/48.8hp		Kubota 36kW/48.3hp Kubota 18.5kW/24.8hp	
Fuel Tank Capacity	45L	11.9gal	65L	17.2gal	65L	17.2gal
HYDRAULIC SYSTEM						
Hydraulic Oil Volume	58L	15.3gal	130L	34.3gal	75L	19.8gal
WEIGHT						
Machine Weight (CE/ANSI)	5,400kg	11,905 lbs	7,160kg	15,785 lbs	7,400kg	16,314 lbs



SPECIFICATIONS

MODELS	AR16J (AR52J)		AR20J (AR65J)		AR24J (AR80J)	
Measurements	Metric	Imperial	Metric	Imperial	Metric	Imperial
Work Height Max.	17.7m	58'1"	21.58m	70'10"	26.6m	87'3"
Platform Height	15.7m	51'6"	19.58m	64'3"	24.6m	80'9"
Horizontal Outreach	9.39m	30'10"	12.37m	40'7"	18m	59'1"
Up and Over Height	7.56m	24'10"	8.19m	26'10"	8.83m	28'11"
Platform Length	1.83m	6'	2.44m	8'	2.44m	8'
Platform Width	0.76m	2'6"	0.9m	2'11"	0.9m	2'11"
Ⓐ Stowed Length	7.56m	24'10"	9.42m	30'11"	11.6m	36'1"
Length-Transport (jib tucked)	6.17m	20'3"	7.63m	25'	9.07m	29'9"
Ⓑ Overall Width	2.31m	7'7"	2.5m	8'2"	2.5m	8'2"
Ⓒ Stowed Height	2.17m	7'1"	2.46m	8'1"	2.83m	9'3"
Height-Transport	2.57m	8'5"	2.96m	9'9"	3.36m	11'
Ⓓ Wheelbase	2.06m	6'9"	2.51m	8'3"	2.85m	9'4"
Ⓔ Ground Clearance	0.36m	1'2"	0.4m	1'4"	0.4m	1'4"
PRODUCTIVITY						
Platform Capacity (unrestricted)	230kg	510 lbs	260kg	573 lbs	250kg	551 lbs
Platform Capacity (restricted)	/	/	350kg	772 lbs	350kg	772 lbs
Max. Platform Occupancy	2		2 (unrestricted) / 3 (restricted)		2 (unrestricted) / 3 (restricted)	
Turntable Rotation	355°	355°	360°	360°	360°	360°
Drive Speed-Stowed	6.1km/h	3.8mph	5km/h	3.1mph	5km/h	3.1mph
Drive Speed-Raised	0.8km/h	0.5mph	0.8km/h	0.5mph	0.8km/h	0.5mph
Gradeability	45%	45%	45%	45%	45%	45%
Max. Wind Speed	12.5m/s	28mph	12.5m/s	28mph	12.5m/s	28mph
Turning Radius-Inside	1.94m	6'4"	1.9m	6'3"	2.04m	6'8"
Turning Radius-Outside	4.41m	14'6"	3.9m	12'10"	4.13m	13'7"
Max. Slope	4.5°/4.5°	4.5°/4.5°	4°/4°	4°/4°	5°/5°	5°/5°
Tire Type	RT Foam-filled		RT Foam-filled		RT Foam-filled	
Tire Models	315/55D20		355/55D625		15-625	
Ground Pressure, Tyres	624.2 kPa	90.5 psi	523.12 kPa	75.9 psi	874.13 kPa	126.8 psi
POWER						
Power Source	Kubota 36kW/48.3hp Deutz 36.4kW/48.8hp		Kubota 36kW/48.3hp		Kubota 36kW/48.3hp	
Fuel Tank Capacity	65L	17.2gal	65L	17.2gal	100L	26.4gal
HYDRAULIC SYSTEM						
Hydraulic Oil Volume	130L	34.3gal	115L	30.4gal	162L	42.8gal
WEIGHT						
Machine Weight (CE/ANSI)	8,180kg	18,034 lbs	9,850kg	21,715 lbs	17,300kg	38,139 lbs

STANDARD FEATURES

- Proportional control
- Horn/Hour meter
- Tilt alarm with lift cut-out
- Emergency stop button
- Anti-collision protection
- Platform auto-leveling system
- On-board diagnostic system
- Full-height drive
- Overload sensing system
- Descent alarm with flashing beacon
- Telematics connector
- Oscillating axle
- Platform tool box
- AC power to platform

OPTIONAL

- Telematics
- Half-height mesh platform
- Hydraulic generator kit
- Cold weather package
- Auxiliary rail
- Biodegradable hydraulic oil



LGMG's new electric telescopic boom aerial work platform is equipped with a lithium battery, and has the advantages of low noise and zero emissions. The maximum working height of the platform ranges from 21.8 to 40.2 meters (71'6"/131'11"). Platform accommodates up to 3 people and 450/300kg (992/661 lbs) dual capacity design for increased work efficiency. Excellent performance in driving performance, stability and operating precision, suitable for various harsh working environments.

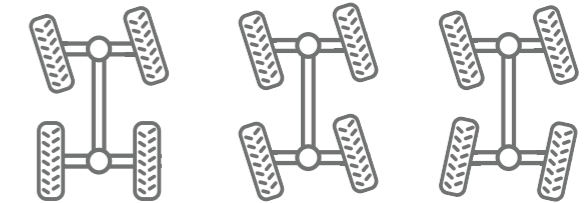
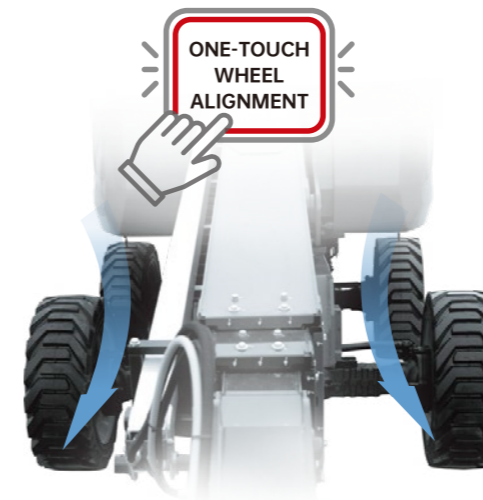
FEATURES

Green technology, eco-friendly

- Fully electric drive, noiseless, zero-emission, energy-saving, and eco-friendly.
- Ultra-high capacity lithium battery, 100% maintenance-free, smart battery management system, super-long battery life.
- Various charging modes are available as standard, and a charging pile port is available as optional.

Excellent RT performance

- Integrated four-wheel-drive system with axles offering strong power and smooth transmission, and 45% gradeability.
- Oscillating, full-time active oscillation of axles, maximum 5 degree tilt angle chassis. It allows the wheels to grip the ground when driving on hard, uneven terrain.



- Equipped with three steering modes: four-wheel steering, crab steering, and front-wheel steering, the boom lifts are also capable of one-touch wheel alignment.

More comfortable operation

- Proportional lift and drive controls deliver smoother manoeuvring, precise positioning and comfortable operation.



Higher maintenance efficiency

- More than 95% of the main components are interchangeable and so are more than 80% of structural parts, which helps to reduce spare parts storage costs and improve maintenance efficiency.
- Intelligent self-diagnostic system for quick troubleshooting and reduced downtime.

SPECIFICATIONS

MODELS	T20JE (T65JE)		T22JE (T72JE)		T26JE (T85JE)		T28JE (T92JE)	
Measurements	Metric	Imperial	Metric	Imperial	Metric	Imperial	Metric	Imperial
Work Height Max.	21.8m	71'6"	23.8m	78'1"	27.9m	91'6"	29.8m	97'9"
Platform Height	19.8m	65'	21.8m	71'6"	25.9m	85'	27.8m	91'2"
Horizontal Outreach Max.	16.6m	54'6"	16.6m	54'6"	21.6m	70'10"	21.6m	70'10"
Platform Length	2.44m	8'	2.44m	8'	2.44m	8'	2.44m	8'
Platform Width	0.9m	2'11"	0.9m	2'11"	0.9m	2'11"	0.9m	2'11"
A Length-Stowed	10.2m	33'6"	11m	36'1"	12.8m	42'	13.4m	44'
Length-Transport (jib tucked)	8.3m	27'3"	9.03m	29'8"	11m	36'1"	11.47m	37'8"
B Overall Width	2.5m	8'2"	2.5m	8'2"	2.5m	8'2"	2.5m	8'2"
C Height-Stowed	2.77m	9'1"	2.77m	9'1"	2.82m	9'3"	2.82m	9'3"
Height-Transport	2.89m	9'6"	2.88m	9'5"	3.03m	9'11"	3.02m	9'11"
D Wheelbase	2.51m	8'3"	2.51m	8'3"	2.85m	9'4"	2.85m	9'4"
E Ground Clearance	0.4m	1'4"	0.4m	1'4"	0.4m	1'4"	0.4m	1'4"

PRODUCTIVITY								
Platform Capacity (unrestricted)	300kg	661 lbs	300kg	661 lbs	300kg	661 lbs	300kg	661 lbs
Platform Capacity (restricted)	450kg	992 lbs	450kg	992 lbs	450kg	992 lbs	450kg	992 lbs
Max. Platform Occupancy	2 (unrestricted) / 3 (restricted)							
Turntable Rotation	360°Continuous		360°Continuous		360°Continuous		360°Continuous	
Drive Speed-Stowed	5km/h	3.1mph	5km/h	3.1mph	5km/h	3.1mph	5km/h	3.1mph
Drive Speed-Raised	0.8km/h	0.5mph	0.8km/h	0.5mph	0.8km/h	0.5mph	0.8km/h	0.5mph
Gradeability	45%		45%		45%		45%	
Max. Wind Speed	12.5m/s	28mph	12.5m/s	28mph	12.5m/s	28mph	12.5m/s	28mph
Turning Radius-Inside	1.9m	6'3"	1.9m	6'3"	2.04m	6'8"	2.04m	6'8"
Turning Radius-Outside	3.9m	12'10"	3.9m	12'10"	4.13m	13'7"	4.13m	13'7"
Max. Slope	5°/5°		5°/5°		5°/5°		5°/5°	
Tire Type	Foam-filled non-marking		Foam-filled non-marking		Foam-filled non-marking		Foam-filled non-marking	
Tire Size	355/55D625		355/55D625		15-625		15-625	
Ground Pressure, Tyres	670 kPa	97.2 psi	652 kPa	94.6 psi	899 kPa	130.4 psi	903 kPa	131 psi
POWER								
Power	80V DC 375Ah		80V DC 375Ah		80V DC 542Ah		80V DC 542Ah	
HYDRAULIC SYSTEM								
Hydraulic Oil Volume	100L	26.4gal	100L	26.4gal	105L	27.7gal	105L	27.7gal
WEIGHT								
Machine Weight (CE/ANSI)	12,000kg	26,455 lbs	12,300kg	27,117 lbs	18,200kg	40,124 lbs	18,700kg	41,226 lbs

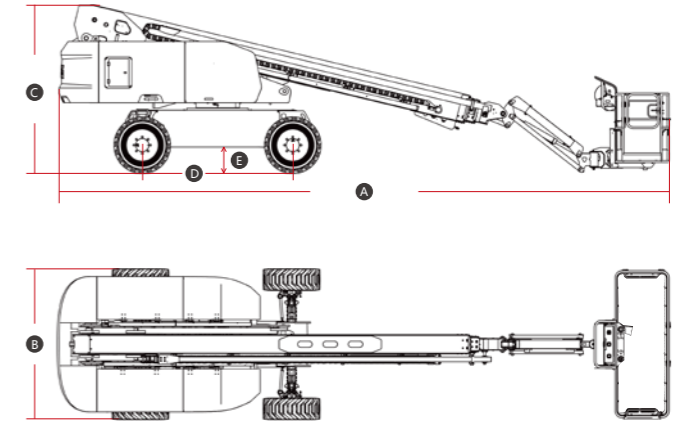
STANDARD FEATURES

- Proportional control
- Horn/Hour meter
- Descent alarm
- Flashing beacons
- Cylinder bellows
- Platform tool box
- Oscillating axle
- Telematics connector
- Emergency stop button
- Auto-leveling platform
- Anti-collision protection
- Over-tilt protection system
- Platform control cover
- Overload sensing system
- Intelligent diagnostic system
- AC power to platform
- Foam-filled non-marking tires

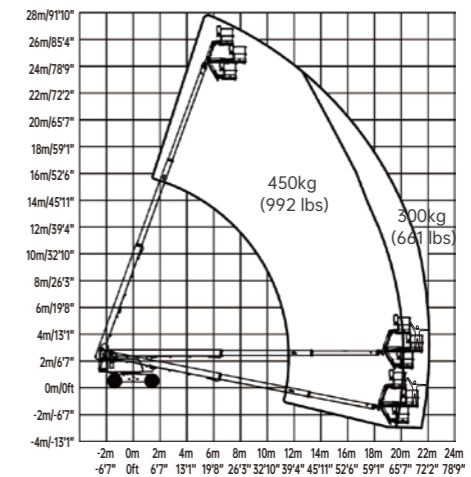
OPTIONAL

- Telematics
- Glazier kit
- Auxiliary rail
- Half-height mesh platform
- Solid tires
- Solid non-marking tires
- Foam-filled tires
- Biodegradable hydraulic oil

MACHINE SIZE



T26JE WORKING RANGE



SPECIFICATIONS

MODELS	T32JE (T105JE)		T34JE (T115JE)		T38JE (T125JE)	
Measurements	Metric	Imperial	Metric	Imperial	Metric	Imperial
Work Height Max.	34.2m	112'4"	36.2m	118'9"	40.2m	131'11"
Platform Height Max.	32.2m	105'8"	34.2m	112'2"	38.2m	125'4"
Horizontal Outreach Max.	23m	75'6"	23m	75'6"	23.5m	77'1"
Platform Length	2.44m	8'	2.44m	8'	2.44m	8'
Platform Width	0.9m	2'11"	0.9m	2'11"	0.9m	2'11"
A Stowed Length	12.39m	40'8"	13m	42'8"	14.31m	46'11"
Length-Transport (jib tucked)	10.53m	34'7"	11.1m	36'5"	12.42m	40'9"
B Overall Width (outriggers stowed)	2.49m	8'2"	2.49m	8'2"	2.49m	8'2"
C Overall Width (outriggers unfolded)	4.01m	13'2"	4.01m	13'2"	4.01m	13'2"
D Stowed Height	2.87m	9'5"	2.89m	9'6"	2.89m	9'6"
Height-Transport	2.87m	9'5"	2.92m	9'7"	2.92m	9'7"
E Wheelbase	4.12m	13'6"	4.12m	13'6"	4.12m	13'6"
F Ground Clearance	0.31m	1'	0.34m	1'1"	0.34m	1'1"

PRODUCTIVITY

Max. Platform Occupants	2 (unrestricted) / 3 (restricted)					
Platform Capacity (unrestricted)	300kg	661 lbs	300kg	661 lbs	300kg	661 lbs
Platform Capacity (restricted)	450kg	992 lbs	450kg	992 lbs	450kg	992 lbs
Turntable Rotation	360°Continuous					
Drive Speed-Stowed	5km/h	3.1mph	5km/h	3.1mph	5km/h	3.1mph
Drive Speed-Raised	0.6km/h	0.37mph	0.6km/h	0.25mph	0.4km/h	0.25mph
Gradeability	45%	45%	45%	45%	40%	40%
Max. Wind Speed	12.5m/s	28mph	12.5m/s	28mph	12.5m/s	28mph
Turning Radius-Inside (outriggers stowed)	6.6m	21'8"	6.6m	21'8"	8.1m	26'7"
Turning Radius-Outside (outriggers stowed)	9.1m	29'10"	9.1m	29'10"	10.1m	33'2"
Turning Radius-Inside (outriggers unfolded)	2.9m	9'6"	2.9m	9'6"	3.1m	10'2"
Turning Radius-Outside (outriggers unfolded)	6.7m	22'	6.7m	22'	6.5m	21'4"
Max.Slope	5°/5°		5°/5°		5°/5°	
Tire Type	Foam-filled non-marking		Foam-filled non-marking		Foam-filled non-marking	
Tire Size	385/45 28		445/50D 710		445/50D 710	

POWER

Power Source	80V 604Ah		80V 604Ah		80V 604Ah	
--------------	-----------	--	-----------	--	-----------	--

HYDRAULIC SYSTEM

Hydraulic Oil Volume	240 L	63.4 gal	240 L	63.4 gal	240 L	63.4 gal
----------------------	-------	----------	-------	----------	-------	----------

WEIGHT

Machine Weight	18,100 kg	39,904 lbs	19,000 kg	41,888 lbs	20,700 kg	45,635 lbs
----------------	-----------	------------	-----------	------------	-----------	------------

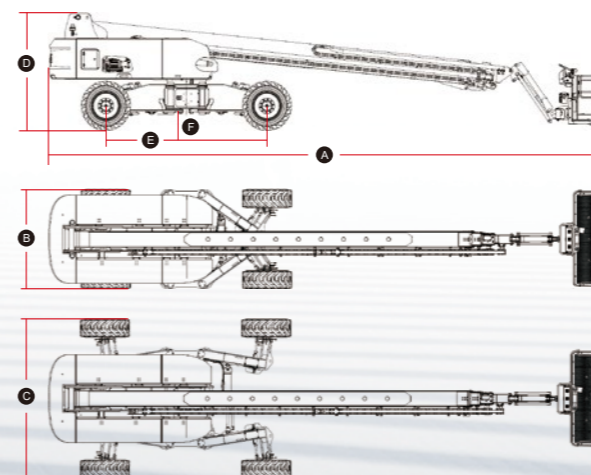
STANDARD FEATURES

- Proportional control
- Horn/Hour meter
- Descent alarm
- Flashing beacons
- Cylinder bellows
- Platform tool box
- Oscillating axle
- Telematics connector
- Emergency stop button
- Auto-leveling platform
- Anti-collision protection
- Over-tilt protection system
- Platform control cover
- Overload sensing system
- Intelligent diagnostic system
- AC power to platform
- Foam-filled non-marking tires

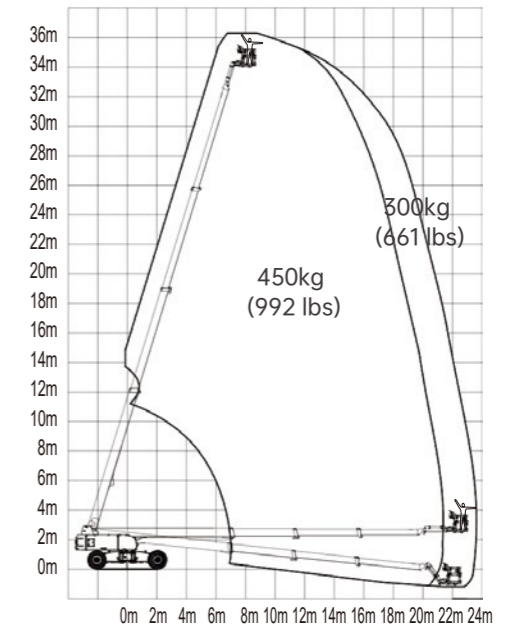
OPTIONAL

- Telematics
- Glazier kit
- Auxiliary rail
- Half-height mesh platform
- Solid tires
- Solid non-marking tires
- Foam-filled tires
- Biodegradable hydraulic oil

MACHINE SIZE



T34JE WORKING RANGE



High Capacity High Productivity

LGMG has a complete line of engine-driven, high-capacity telescopic boom aerial work platforms, with the maximum working height ranging from 21.8 to 40.2 meters (71'6"/131'11"). With a double capacity design of 450/300kg (992/661 lbs), the machine can allow up to 3 people to work at the same time, which greatly improves work efficiency.

FEATURES

- Full-time active oscillation of axles, maximum 5 degree tilt angle chassis, allows the wheels to grip to the ground when navigating hard, uneven terrain.
- Proportional lift and drive controls deliver smoother maneuvering, precise positioning and comfortable operation.
- Automatic engine speed control with a boom that descends by gravity. Allows smooth movement, saves energy, and reduces noise.
- Intelligent self-diagnosis and control system with precise fault analysis, convenient and efficient.
- More than 95% of the main components and more than 80% of the structural parts are interchangeable, which helps to reduce spare parts storage costs and improve maintenance efficiency.

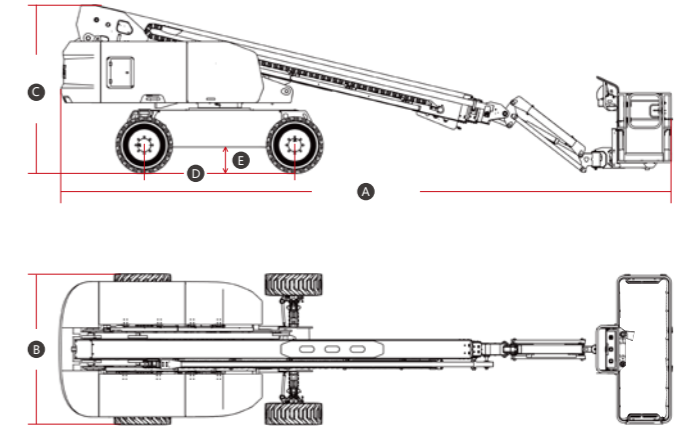
SPECIFICATIONS

MODELS	T20J-H (T65J-H)		T22J-H (T72J-H)		T26J-H (T85J-H)		T28J-H (T92J-H)	
Measurements	Metric	Imperial	Metric	Imperial	Metric	Imperial	Metric	Imperial
Work Height Max.	21.8m	71'6"	23.8m	78'1"	27.9m	91'6"	29.8m	97'9"
Platform Height	19.8m	65'	21.8m	71'6"	25.9m	85'	27.8m	91'2"
Horizontal Outreach Max.	16.6m	54'6"	16.6m	54'6"	21.6m	70'10"	21.6m	70'10"
Platform Length	2.44m	8'	2.44m	8'	2.44m	8'	2.44m	8'
Platform Width	0.9m	2'11"	0.9m	2'11"	0.9m	2'11"	0.9m	2'11"
A Length-Stowed	10.2m	33'6"	11m	36'1"	12.72m	41'9"	13.4m	44'
Length-Transport (jib tucked)	8.3m	27'3"	9.03m	29'8"	11m	36'1"	11.86m	38'11"
B Overall Width	2.49m	8'2"	2.49m	8'2"	2.5m	8'2"	2.5m	8'2"
C Height-Stowed	2.78m	9'1"	2.78m	9'1"	2.83m	9'3"	2.83m	9'3"
Height-Transport	2.89m	9'6"	2.88m	9'5"	2.99m	9'10"	3.01m	9'11"
D Wheelbase	2.51m	8'3"	2.51m	8'3"	2.85m	9'4"	2.85m	9'4"
E Ground Clearance	0.4m	1'4"	0.4m	1'4"	0.43m	1'5"	0.43m	1'5"
PRODUCTIVITY								
Platform Capacity (unrestricted)	300kg	661 lbs	300kg	661 lbs	300kg	661 lbs	300kg	661 lbs
Platform Capacity (restricted)	450kg	992 lbs	450kg	992 lbs	450kg	992 lbs	450kg	992 lbs
Max. Platform Occupancy	2 (unrestricted) / 3 (restricted)							
Turntable Rotation	360°Continuous		360°Continuous		360°Continuous		360°Continuous	
Drive Speed-Stowed	4.8km/h	3mph	4.8km/h	3mph	4.8km/h	3mph	4.8km/h	3mph
Drive Speed-Raised	0.8km/h	0.5mph	0.8km/h	0.5mph	0.8km/h	0.5mph	0.8km/h	0.5mph
Gradeability	45%		45%		45%		45%	
Max. Wind Speed	12.5m/s	28mph	12.5m/s	28mph	12.5m/s	28mph	12.5m/s	28mph
Turning Radius-Inside	2.5m	8'2"	2.5m	8'2"	3.66m	12'	3.66m	12'
Turning Radius-Outside	5.5m	18'	5.5m	18'	6.55m	21'6"	6.55m	21'6"
Max. Slope	5°/5°		5°/5°		5°/5°		5°/5°	
Tire Type	RT Foam-filled		RT Foam-filled		RT Foam-filled		RT Foam-filled	
Tire Size	355/55D625		355/55D625		18-625		18-625	
Ground Pressure, Tyres	670 kPa	97.2 psi	652 kPa	94.6 psi	898 kPa	130.2 psi	902 kPa	130.8 psi
POWER								
Power	Kubota 36kW/48.3hp Deutz 36.4kW/48.8hp				Kubota 54.6kW/73.2hp Deutz 55.4kW/74.3hp			
Fuel Tank Capacity	100L	26.4gal	100L	26.4gal	100L	26.4gal	100L	26.4gal
HYDRAULIC SYSTEM								
Hydraulic Oil Volume	180L	47.5gal	180L	47.5gal	180L	47.5gal	180L	47.5gal
WEIGHT								
Machine Weight (CE/ANSI)	12,000kg	26,455 lbs	12,300kg	27,117 lbs	18,300kg	40,345 lbs	18,800kg	41,447 lbs

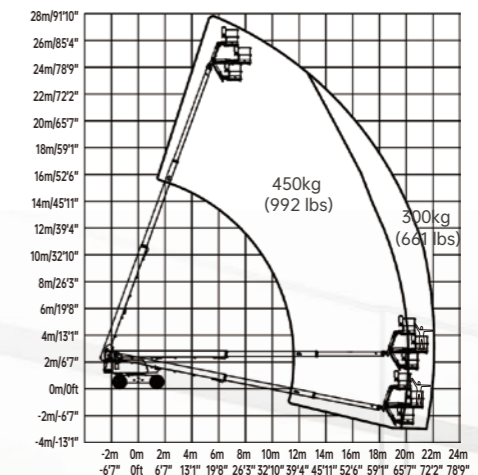
STANDARD FEATURES

- Proportional control
- Horn/Hour meter
- Platform control cover
- Flashing beacons
- Cylinder bellows
- Platform tool box
- Oscillating axle
- Telematics connector
- Emergency stop button
- Auto-leveling platform
- Anti-collision protection
- Over-tilt protection system
- Overload sensing system
- Intelligent diagnostic system
- Descent alarm with flashing beacon
- AC power to platform
- RT Foam-filled tires

MACHINE SIZE



T26J-H WORKING RANGE



OPTIONAL

- Telematics
- Glazier kit
- Auxiliary rail
- Hydraulic generator kit
- Hydraulic oil radiator
- Cold weather package
- Half-height mesh platform
- 3.5kw Hydraulic generator
- Biodegradable hydraulic oil
- Solid tires (T20J-H/T22J-H)
- Solid non-marking tires (T20J-H/T22J-H)
- Foam-filled non-marking tires



SPECIFICATIONS

MODELS	T32J-H (T105J-H)		T34J-H (T115J-H)		T38J-H (T125J-H)	
Measurements	Metric	Imperial	Metric	Imperial	Metric	Imperial
Work Height Max.	34.2m	112'4"	36.2m	118'9"	40.2m	131'11"
Platform Height Max.	32.2m	105'8"	34.2m	112'2"	38.2m	125'4"
Horizontal Outreach Max.	23m	75'6"	23m	75'6"	23.5m	77'1"
Platform Length	2.44m	8'	2.44m	8'	2.44m	8'
Platform Width	0.9m	2'11"	0.9m	2'11"	0.9m	2'11"
A Stowed Length	12.39m	40'8"	13m	42'8"	14.31m	46'11"
Length-Transport (jib tucked)	10.53m	34'7"	11.1m	36'5"	12.42m	40'9"
B Overall Width (outriggers stowed)	2.49m	8'2"	2.49m	8'2"	2.49m	8'2"
C Overall Width (outriggers unfolded)	4.01m	13'2"	4.01m	13'2"	4.01m	13'2"
D Stowed Height	2.87m	9'5"	2.89m	9'6"	2.89m	9'6"
Height-Transport	2.87m	9'5"	2.92m	9'6"	2.92m	9'7"
E Wheelbase	4.12m	13'6"	4.12m	13'6"	4.12m	13'6"
F Ground Clearance	0.3m	1'	0.34m	1'1"	0.34m	1'1"

PRODUCTIVITY

Max. Platform Occupants	2 (unrestricted) / 3 (restricted)					
Platform Capacity (unrestricted)	300kg	661 lbs	300kg	661 lbs	300kg	661 lbs
Platform Capacity (restricted)	450kg	992 lbs	450kg	992 lbs	450kg	992 lbs
Turntable Rotation	360°Continuous					
Drive Speed-Stowed	5km/h	3.1mph	5km/h	3.1mph	5km/h	3.1mph
Drive Speed-Raised	0.6km/h	0.37mph	0.6km/h	0.37mph	0.6km/h	0.37mph
Gradeability	45%	45%	45%	45%	45%	45%
Max. Wind Speed	12.5m/s	28mph	12.5m/s	28mph	12.5m/s	28mph
Turning Radius-Inside (outriggers stowed)	6.6m	21'8"	6.6m	21'8"	6.6m	21'8"
Turning Radius-Outside (outriggers stowed)	9.1m	29'10"	9.1m	29'10"	10.1m	29'10"
Turning Radius-Inside (outriggers unfolded)	2.9m	9'6"	2.9m	9'6"	2.9m	9'6"
Turning Radius-Outside (outriggers unfolded)	6.7m	22'	6.7m	22'	6.7m	22'
Max. Slope	5°/5°		5°/5°		5°/5°	
Tire Type	Foam-filled		Foam-filled		Foam-filled	
Tire Size	385/45-28		445/50D 710		445/50D 710	

POWER

Power Source	Kubota 54.6kW/73.2hp		Kubota 54.6kW/73.2hp		Kubota 54.6kW/73.2hp	
Fuel Tank Capacity	150 L	39.6 gal	150 L	39.6 gal	150 L	39.6 gal

HYDRAULIC SYSTEM

Hydraulic Oil Volume	220 L	58.1 gal	220 L	58.1 gal	220 L	58.1 gal
----------------------	-------	----------	-------	----------	-------	----------

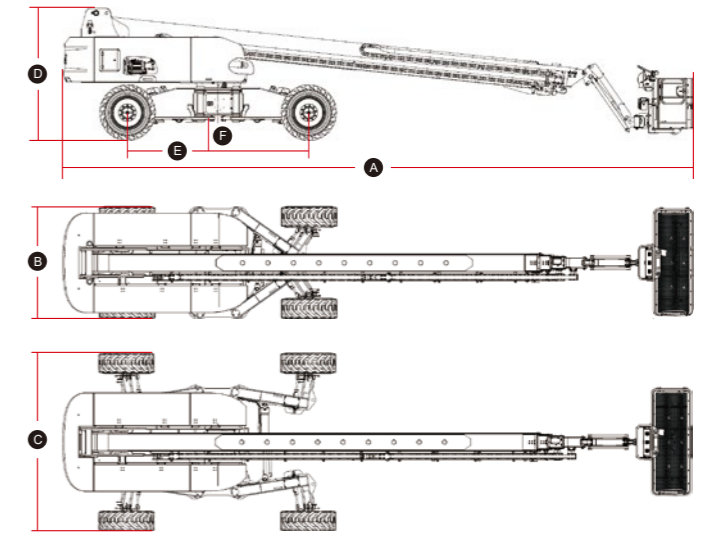
WEIGHT

Machine Weight	18,100 kg	39,904 lbs	19,000 kg	41,888 lbs	20,700 kg	45,635 lbs
----------------	-----------	------------	-----------	------------	-----------	------------

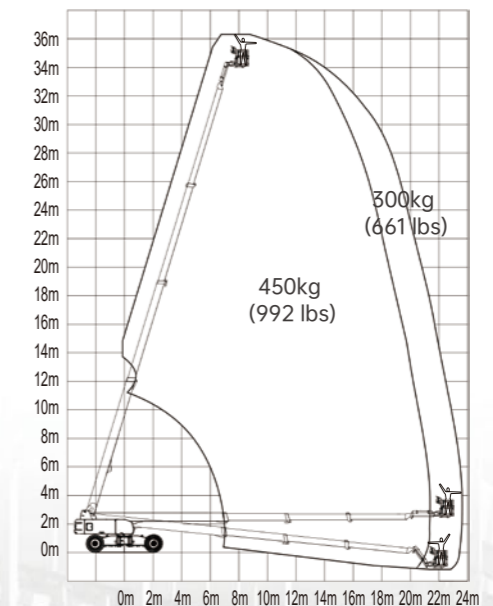
STANDARD FEATURES

- Proportional control
- Horn/Hour meter
- Descent alarm
- Flashing beacons
- Cylinder bellows
- Platform tool box
- Oscillating axle
- Telematics connector
- Emergency stop button
- Auto-leveling platform
- Anti-collision protection
- Over-tilt protection system
- Platform control cover
- Overload sensing system
- Intelligent diagnostic system
- AC power to platform
- Foam-filled non-marking tires

MACHINE SIZE



T34J-H WORKING RANGE



OPTIONAL

- Telematics
- Glazier kit
- Auxiliary rail
- Half-height mesh platform
- Solid tires
- Solid non-marking tires
- Foam-filled tires
- Biodegradable hydraulic oil



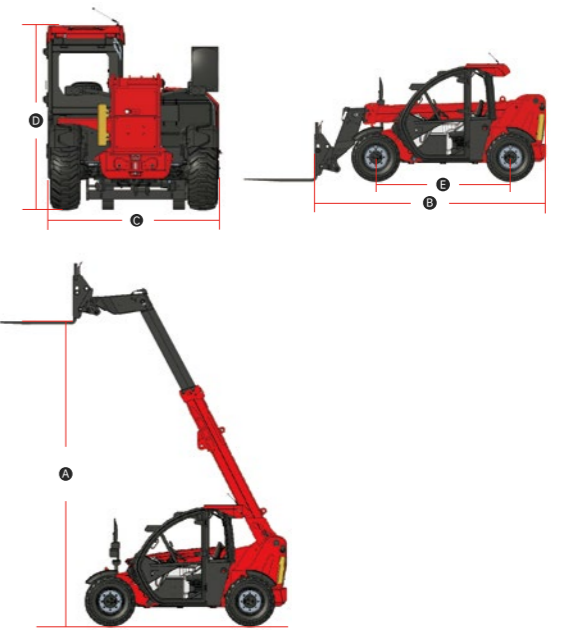
PART 11 TELEHANDLERS



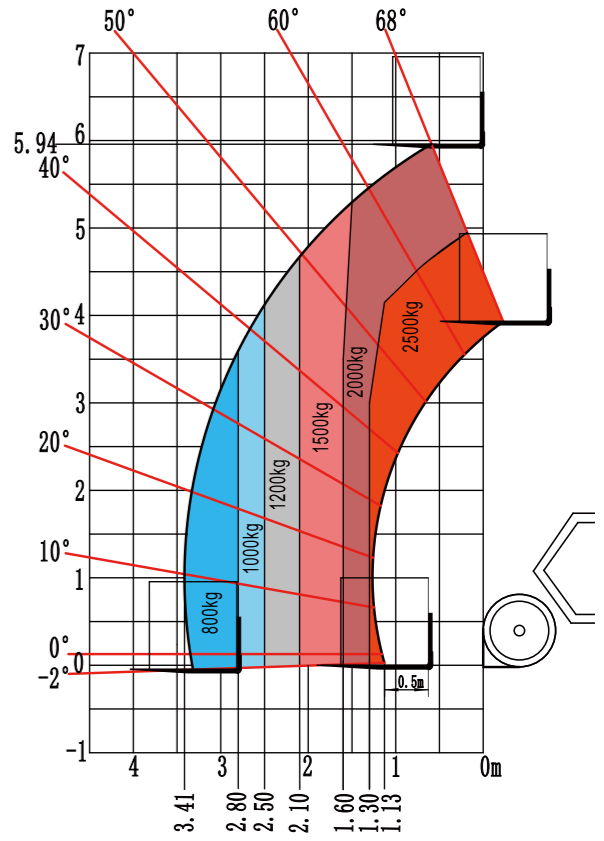
The H625E, LGMG's first lithium-electric telehandler, boasts unparalleled advantages including zero emissions, environmental friendliness, quiet operation, and reduced operating and maintenance costs, which are hallmark features of electric telehandlers. With a maximum lifting height of 5.94m and a maximum lifting capacity of 2,500kg, the H625E is the most compact model in LGMG's telehandler series. Its compact, lightweight design and flexible operation render it highly suitable for versatile construction tasks in confined spaces with stringent noise requirements.

SPECIFICATIONS

MODELS	H625E	
Measurements	Metric	Imperial
Ⓐ Max. Lifting Height	5.94m	19'6"
Max. Outreach	3.41m	11'2"
Ⓑ Overall Length	3.99m	13'1"
Ⓒ Overall Width	1.86m	6'1"
Ⓓ Overall Height	1.97m	6'6"
Ⓔ Wheelbase	2.3m	7'7"
Ground Clearance	0.33m	1'1"
PRODUCTIVITY		
Max. Capacity	2,500kg	5,512 lbs
Gradeability-Unladen	30%	
Min. Turning Radius	3.36m	11'
Tilt Angle	±5°	
Drive /Steering Mode	4 Wheel Drive / 4 Wheel Steer	
Primary Boom Ascending Time	12±1s	
Primary Boom Descending Time	8±1s	
Boom Extending Time	8.5±1s	
Boom Retracting Time	5±1s	
Travel Speed	16km/h	10mph
Travel Speed	16km/h	10mph
Service Brake	Multi-disc Wet Brake of Front Axle	
Standard Tyres	12-16.5-12-TL	
ENGINE/BATTERY		
Battery Technology	Lithium Battery	
Battery Nominal Voltage	76.8V	
Battery Capacity	304Ah	
Hydraulic motor power	14kW	
Drive motor power	12.3kW	
ELECTRIC CIRCUIT		
12V Battery capacity	120Ah	
HYDRAULIC SYSTEM		
Working pump flow	56 l/min	
Hydraulic Oil Capacity	65L	17.2 gal
WEIGHT		
Machine Weight	5,000kg	11,023 lbs



LOAD CHART





LGMG Telehandlers are the perfect choice for construction work. They are sturdy yet manoeuvrable, with excellent performance and strong four-wheel drive capabilities. The three steering modes and frame leveling function make the LGMG Telehandlers the perfect machine to tackle complex or difficult working conditions.

SPECIFICATIONS

MODELS	H625		H735		HA735	
	Metric	Imperial	Metric	Imperial	Metric	Imperial
Measurements						
Ⓐ Max. Lifting Height	5.94m	19'6"	7m	22'10"	6.9m	22'8"
Max. Outreach	3.41m	11'2"	3.9m	12'10"	3.9m	12'10"
Ⓑ Overall Length	3.99m	13'1"	4.99m	16'4"	4.91m	16'1"
Ⓒ Overall Width	1.86m	6'1"	2.34m	7'8"	2.41m	7'11"
Ⓓ Overall Height	1.97m	6'6"	2.3m	7'7"	2.31m	7'7"
Ⓔ Wheelbase	2.3m	7'7"	2.85m	9'4"	2.9m	9'6"
Ground Clearance	0.32m	1'1"	0.45m	1'6"	0.41m	1'4"
PRODUCTIVITY						
Max. Capacity	2,500kg	5,512 lbs	3,500kg	7,716 lbs	3,500kg	7,716 lbs
Gradeability-Unladen	45%		45%		45%	
Min. Turning Radius	3.36m	11'	3.9m	12'10"	4.1m	13'5"
Tilt Angle	±5°		±5°		±5°	
Drive /Steering Mode	4 Wheel Drive / 4 Wheel Steer		4 Wheel Drive / 4 Wheel Steer		4 Wheel Drive / 4 Wheel Steer	
Primary Boom Ascending Time	9s		7.51s		7.4s	
Primary Boom Descending Time	6.5s		5.57s		5.4s	
Boom Extending Time	6s		6.93s		7.6s	
Boom Retracting Time	4s		5.32s		4.8s	
Forward - First Gear Travel Speed	10km/h	6.2mph	9km/h	5.6mph	4.5km/h	2.8mph
Forward - Second Gear Travel Speed	24.9km/h	15.5mph	27km/h	16.8mph	9.5km/h	5.9mph
Forward - Third Gear Travel Speed	/	/	/	/	19km/h	11.8mph
Forward - Fourth Gear Travel Speed	/	/	/	/	27km/h	16.8mph
Backward - First Gear Travel Speed	10km/h	6.2mph	9km/h	5.6mph	4.5km/h	2.8mph
Backward - Second Gear Travel Speed	24.9km/h	15.5mph	27km/h	16.8mph	9.5km/h	5.9mph
Backward - Third Gear Travel Speed	/	/	/	/	19.5km/h	12.1mph
Braking	Multi-disc wet brake of front axle		Multiple-disk brake with oil bath on front and rear axles			
Standard Tyres	12-16.5-12-TL		400/80 R24		460/70 R24	
ENGINE						
Manufacturer	Kubota		Kubota		Yuchai	
Rated Power	54.6kW	73.2hp	54.6kW	73.2hp	73kW	97.9hp
Max. Torque	289.3N.m	213.4 lb.ft	289.3N.m	213.4 lb.ft	420N.m	309.8 lb.ft
Displacement	3,331ml	203.3 cu.in	3,331ml	203.3 cu.in	3,621ml	221 cu.in
Maximum traction force	39kN		43kN		80kN	
HYDRAULIC SYSTEM						
Working pump type	Variable piston pump					
Working pump displacement	84 l/min	22 US gpm	113 l/min	30 US gpm	144 l/min	38 US gpm
TANK CAPACITIES						
Hydraulic Oil Capacity	75L	19.8 gal	100L	26.4gal	100L	26.4gal
Fuel Tank Capacity	63L	16.6 gal	100L	26.4gal	130L	34.3gal
WEIGHT						
Machine Weight	5,050kg	11,134 lbs	7,000kg	15,432 lbs	7,300kg	16,094 lbs



SPECIFICATIONS

Models	H1440		H1840		HR2150	
Measurements	Metric	Imperial	Metric	Imperial	Metric	Imperial
A Max. Lifting Height	13.6m	44'7"	17.6m	57'9"	20.7m	67'11"
Max. Outreach	9.22m	30'3"	13.1m	43'	18.1m	59'5"
B Overall Length	5.62m	18'5"	5.9m	19'4"	6.86m	22'6"
C Overall Width	2.44m	8'	2.44m	8'	2.46m	8'1"
D Overall Height	2.67m	8'9"	2.67m	8'9"	3.15m	10'4"
E Wheelbase	3.07m	10'1"	3.07m	10'1"	2.75m	9'
Ground Clearance	0.41m	1'4"	0.41m	1'4"	0.39m	1'3"
PRODUCTIVITY						
Max. Capacity	4,000kg	8,818 lbs	4,000kg	8,818 lbs	4,999kg	11,021 lbs
Gradeability-Unladen	65%		65%		50%	
Min. Turning Radius	4.3m	14'1"	4.3m	14'1"	3.65m	12'
Tilt Angle	±9°		±9°		±8°	
Drive /Steering Mode	4 Wheel Drive / 4 Wheel Steer					
Primary Boom Ascending Time	14s		14s		27s	
Primary Boom Descending Time	16s		16s		22s	
Boom Extending Time	22s		22s		32s	
Boom Retracting Time	15s		15s		23s	
Forward - First Gear Travel Speed	5km/h	3.1mph	5km/h	3.1mph	5km/h	3.1mph
Forward - Second Gear Travel Speed	12km/h	7.5mph	12km/h	7.5mph	30km/h	18.6mph
Forward - Third Gear Travel Speed	20km/h	12.4mph	20km/h	12.4mph	/	
Forward - Fourth Gear Travel Speed	30km/h	18.6mph	30km/h	18.6mph	/	
Backward - First Gear Travel Speed	5km/h	3.1mph	5km/h	3.1mph	5km/h	3.1mph
Backward - Second Gear Travel Speed	12km/h	7.5mph	12km/h	7.5mph	30km/h	18.6mph
Backward - Third Gear Travel Speed	20km/h	12.4mph	20km/h	12.4mph	/	
Braking	Multi-disc wet brake of front axle		Multi-disc wet brake of front axle		Multiple-disc brake with oil bath on front and rear axles	
Standard Tyres	440/80 R24		440/80 R24		445/70 R22.5	
POWER						
Manufacturer	Perkins		Perkins		Perkins	
Rated Power	74.4kW	99.8hp	74.4kW	99.8hp	110.1kW	147.7hp
Max. Torque	430N.m	312.5 lb.ft	430N.m	312.5 lb.ft	560N.m	413.1 lb.ft
Displacement	3,620ml	220.9 cu.in	3,620ml	220.9 cu.in	4,400ml	268.5 cu.in
Maximum traction force	93kN		93kN		96kN	
HYDRAULIC SYSTEM						
Working pump type	Variable piston pump					
Working pump displacement	139 l/min	37 US gpm	139 l/min	37 US gpm	132 l/min	35 US gpm
TANK CAPACITIES						
Hydraulic Oil Capacity	180L	47.6gal	180L	47.6gal	260L	60.7gal
Fuel Tank Capacity	150L	39.6gal	150L	39.6gal	170L	44.9gal
WEIGHT						
Machine Weight	12,050kg	26,566 lbs	12,350kg	27,227 lbs	17,100kg	37,699 lbs

FEATURES

High Power, Low Fuel Consumption

- Featured with high powerful engine for maximising material handling capacity with lower fuel consumption.

High Ergonomics, Safety and Comfort

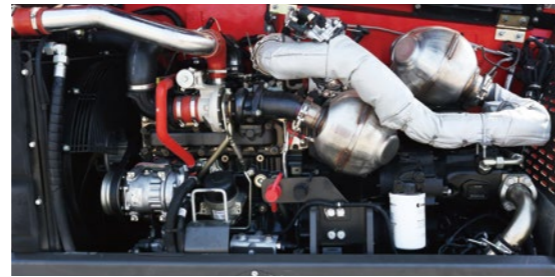
- FOPS&ROPS cab as standard, provides high effective safety on job sites.
- The standard high-capacity air conditioning system with heater, creates a comfortable and productive operator environment, which is ideal for work sites in hotter or cooler climates.
- Standard-fit LGMG fenders provide superior protection from dirt and spray.
- Excellent all-around visibility thanks to direct glazing, large roof screen and low engine house.

Precise Operation, Intelligent Controlling

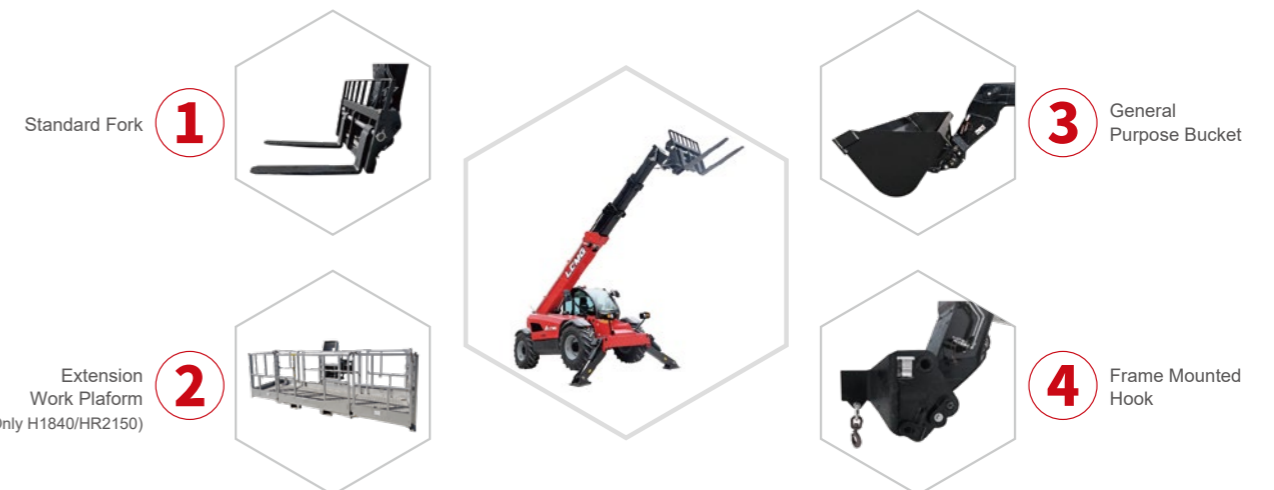
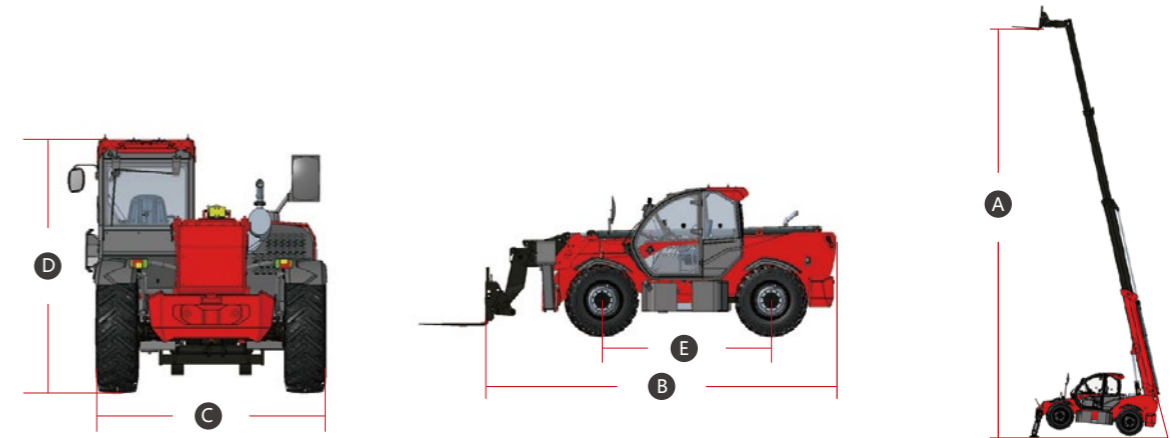
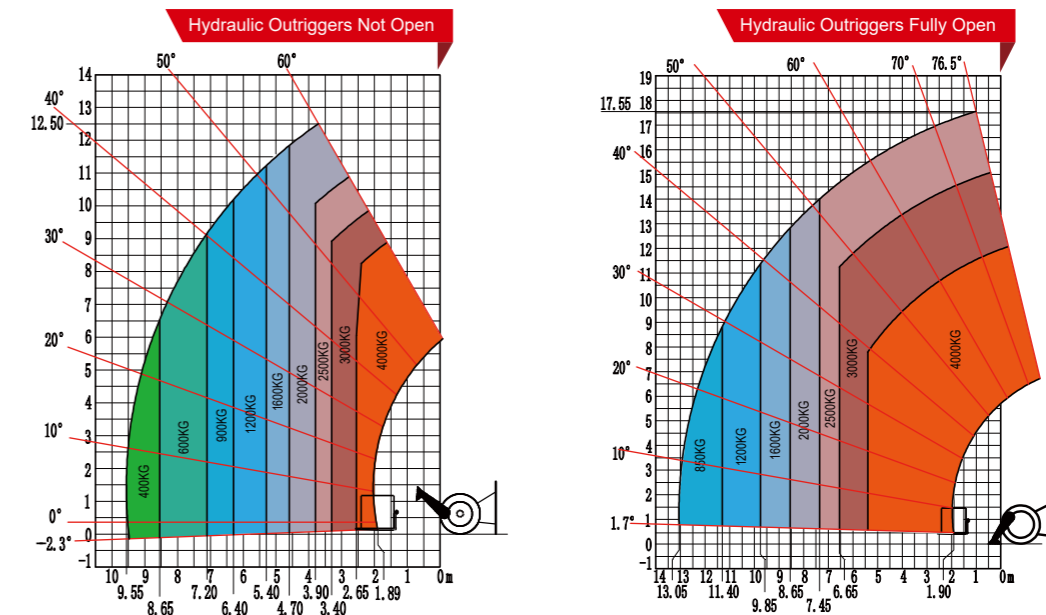
- The load-sense control system delivers high efficiency and excellent performance on different job sites.
- A large high-definition LCD screen, featuring an automa-tive-style and intuitive layout, provides a clear view and is easy to be recognized.
- An ergonomically-designed, fully proportional single-lever joy-stick delivers fast and precise control.

Versatile and Adaptable

- The three steering modes: four-wheel steering, crab steering, and front-wheel steering, with a small turning radius, make the machine perfect for constrained and restricted job sites.
- Auxiliary hydraulic functions are fitted as standard, to accom-modate a wide range of attachments, including platform, bucket, frame-mounted hook and glass suction, for maximum versatility.



LOAD CURVE OF H1840 UNDER RT CONDITION



SERVICE CONCEPT

Create Lasting Value, Boost Brand-building, Focus on Detail, Go Beyond Expectation

LGGM provides comprehensive pre-sale, sale and after-sale attentive service. Integrate precise service into any link closely related to each customer, and provide technical support, training programs, warranty and parts sales to customers during the whole machine life-cycle.



SERVICE CONCEPT

TECHNICAL SUPPORT

LGGM service teams always provide remote technical support by phone or email and even on-site support with manuals, tools, information and service solutions.

SERVICE CONCEPT

TRAINING SUPPORT

LGGM provides various training programs for operators and service technicians, helping rental companies to improve their service and training capabilities via dedicated courses prepared by LGGM teams either online or on-site.



SERVICE CONCEPT

PARTS SUPPORT

LGGM provides sufficient stock of parts in LGGM's China headquarters, LGGM Europe/North America/Japan, and other global service centers. Accurate parts manuals and technical support teams are always available to answer your questions.



TRAINING CASE

Rigorous trainings / Professional certifications



APPLICATION SCENARIO

Perfect for different job sites

