

SS0407E AERIAL WORK PLATFORM PARTS CATALOG



LINGONG GROUP JINAN HEAVY MACHINERY CO., LTD.

Spare parts and services

For the owner of the machines of LGMG, only the spare parts and services of LGMG can make your machine to better maintain the original features.

Only LGMG is able to provide you with the perfect match of pure quality spare parts for your machine and knowledge of professional maintenance staff. Only in this way it can ensure sustainable high productivity and longer service life.

SS0407E AERIAL WORK PLATFORM PARTS CATALOG

2014-11 Version 1 Printed 1

LINGONG GROUP JINAN HEAVY MACHINERY CO., LTD.

Add: Zhongrun Century Square, No. 13777, Jingshi Road, Lixia, Jinan, Shandong, P.R. China

Tel: 86-0531-81663345

Fax: 86-0531-81666853

Web: WWW.LGMG.COM.CN

FOREWORD

This parts catalog of SS0407E aerial work platform is made for the convenience of users to use, repair and maintain the machine, which can be referred in the process of using. It can also help the users to be familiar with the structure and assembly relation of the machine. Parts of the engine are showed in details in its structure handbook, which are no longer contained in the catalog.

The catalog identifies drawings and assembly relations of different parts according to the system. Components which can not be taken apart, such as welding parts or riveted assemblies, are marked only by their code without the list of their consisting parts. The list in the catalog is arranged in Chinese and English.

This catalog is based on the SS0407E standard product, which can be a reference for the other nonstandard products, for more information, please consult LGMG, the local dealer or LinGong website. With the advancement of technology, we will keep on improving the product, so some content in the catalog may be inconsistent with the future products, which will not notice the users. When ordering the spare parts, please be kindly inform us the manufacturing date and serial number of the machine.

THE COMPILER
2013.6

CONTENTS

B. Axle system	BoM Reference	Page
Front axle assembly	B0400-2504000255.S1D	6
Rear axle assembly	B0500-2505000099.S1C	8
D. Chassis system	BoM Reference	Page
Chassis assembly	D0700-2516002121.S	12
Battery and hydraulic tank tray	D0800-2518000610.S1B	14
Battery tray components	D0801-2518000611.S1C	16
Tank side	D0802-2518000666.S1A	18
Hollow protect system	D0900-2519000248.S1B1	20
Pressing shaft assembly	D0900-2519000316.S	24
F. Steering system	BoM Reference	Page
Steering arm	F1200-2517000192.S1B	28
G. Scissor assy installation assembly	BoM Reference	Page
Scissor installation assembly	G1300-2520001661.S1B	32
I. Cover accessory	BoM Reference	Page
Ladder	I1700-2529000261.S1C	38
K. Platform assembly	BoM Reference	Page

Platform assembly	K2100-2521006137.S1A	42
Main platform	K2100-2521006026.S1B	44
Roller assembly	K2100-2521003593.S	46
Extension platform	K2100-2521006020.S1A	48
Ndrail assembly	K2100-2521006031.S1A	50
Semi-swing gate assembly	K2100-2521003740.S1A	54
Bracket	K2106-2521002803.S	56

L. Hydraulic system	BoM Reference	Page
Drive system	L2300-2507000348.S1C	60
Power unit dc-f47-1.1-e-1.6-24-24-4ph-c	L2300-4120002290	62
Steer cylinder 40*20*152.4	L2300-4120703457	64
Seal kit 24a300540s	L2300-4120703457001	66
Lift system	L2400-2508000314.S1D	68
Cable assembly	L2400-2508000202.S3B	72
Lift cylinder seal kit 60*45*620-930	L2400-4120703499	74
Seal kit 24a300610s	L2400-4120703499001	76

M. Electric system	BoM Reference	Page
Electricity assembly	M2900-2530000974.S	80
Platform controller	M2900-4130001286	82
Chassis electric systems	M3100-2532001649.S1A-G1	84

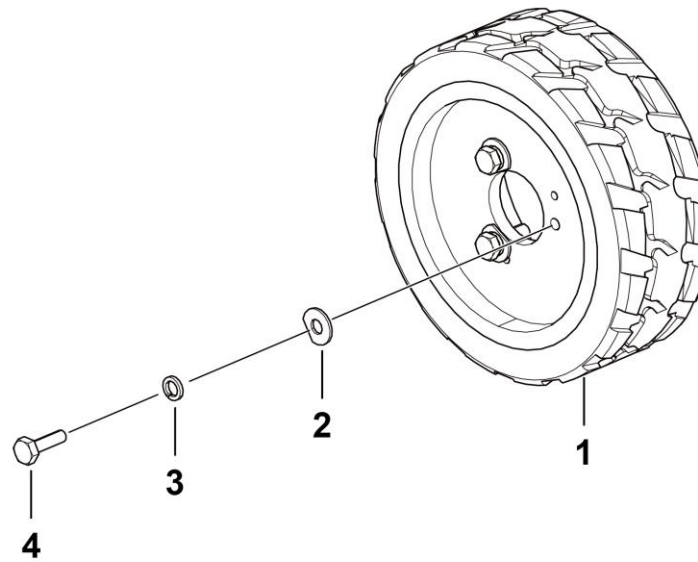
Drive motor	M3100-4130702486	92
Lower control panel	M3101-4130001288	94
Electricity assembl	M3200-2533000679.S1B	96

B
AXLE SYSTEM



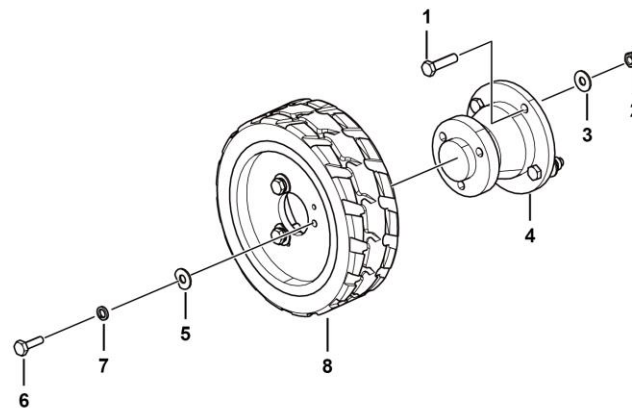
LINGONG GROUP JINAN HEAVY MACHINERY CO., LTD.

Front axle assembly



B0400-2504000255.S1d

Rear axle assembly



B0500-2505000099.S1c

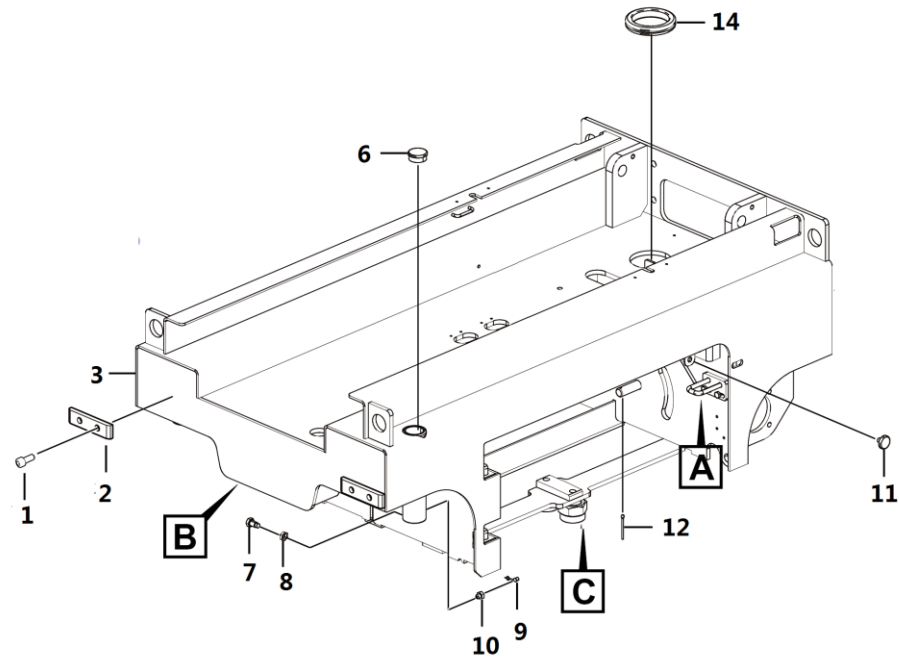
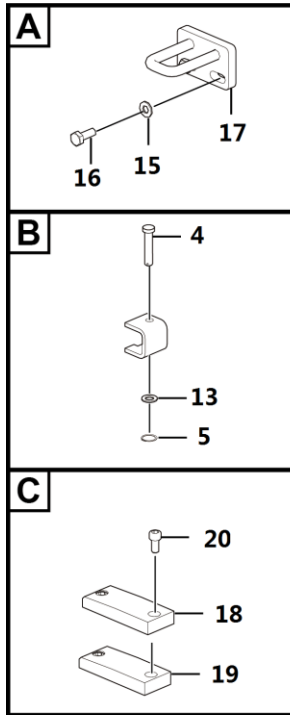
Key	Part No.	Description	Spare parts Y/N	Qty	Remarks
1	4011010769	Bolt gb5783-m10*40flznyc-10.9-480	Y	8	
2	4013010296	Nut gb889.1-m10flznyc-8	Y	8	
3	4015010279	Washer gb97.1-10flznyc-480	Y	8	
4	4110702488	Hub assembly ,φ136	Y	2	
5	25040002103	Washer, 25*10*3.2	Y	6	
6	4011010707	Bolt gb5783-m10*30flznyc-8.8-480	Y	6	
7	4015010314	Washer gb93-10-65mn flznyc	Y	6	
8	4110702390	Tire assembly ,230*80	Y	2	

D
CHASSIS SYSTEM



LINGONG GROUP JINAN HEAVY MACHINERY CO., LTD.

Chassis assembly

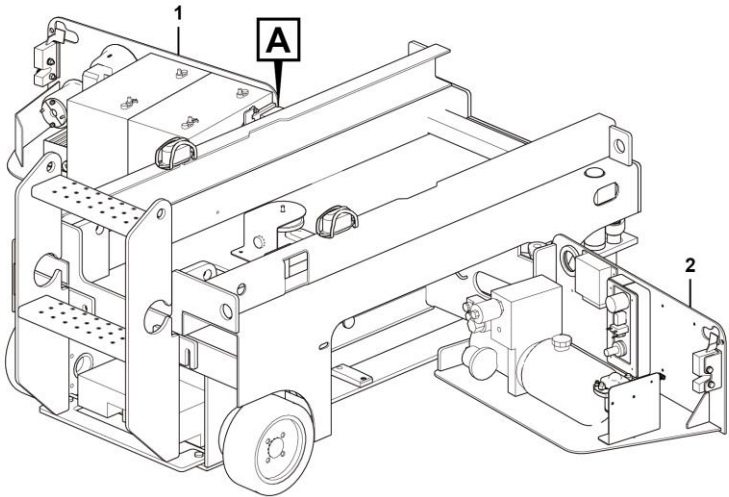
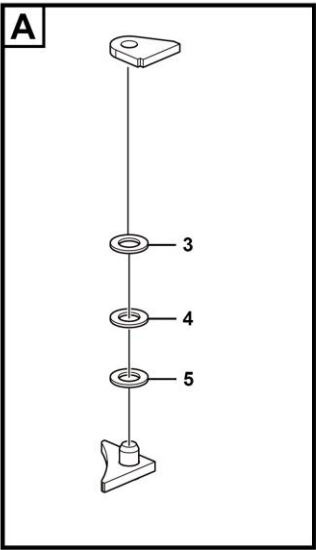


D0700-2516002121.S

Key	Part No.	Description	Spare parts Y/N	Qty	Remarks
1	4014010246	Screw gb70.1-m8*20flznyc-8.8-480	Y	4	
2	25160011312	Collision block, chassis	Y	2	
3	25160021201	Chassis	Y	1	
4	25160001342	Cylinder pin, φ19.5*84	Y	1	
5	4015010295	Snap ring gb894.1-19flznyc-65mn-480	Y	1	
6	4190002736	Plug 111532	Y	2	
7	25160003032	Stop bolt, m12*14.5	Y	2	
8	4013010315	Nut gb6172.1-m12flznyc-8-480	Y	2	
9	4030000107	Oil bowl dust cap jxhf-00006	Y	2	
10	4030000065	Grease fitting jb7940.1-m10*1	Y	2	
11	25200000402	Rubber plug,14*11	Y	2	
12	4016010136	Cotter pin gb91-4*45flznyc-480-q235a	Y	2	
13	4015010294	Washer gb97.1-20flznyc-480	Y	2	
14	25160000621	Rubber gromet,88*5	Y	1	
15	4015010280	Washer gb97.1-8flznyc-480	Y	4	
16	4011010711	Bolt gb5783-m8*20flznyc-8.8-480	Y	4	
17	25160004253	Weldment, lock retainer, chassis	Y	2	
18	25160000991	Cushion block, supporting battery and fuel tank side	Y	2	
19	25160014131	Cushion plate, supporting battery and fuel tank side	Y	2	
20	4011010908	Screw gb70.1-m8*25flznyc-8.8-480	Y	4	

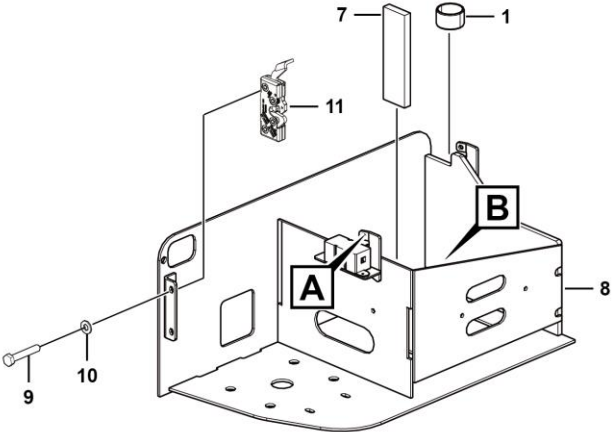
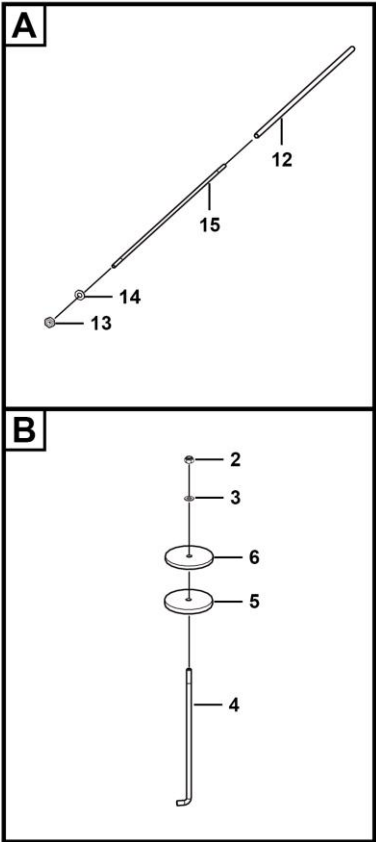
Chassis system

Battery and hydraulic tank tray



D0800-2518000610.S1b

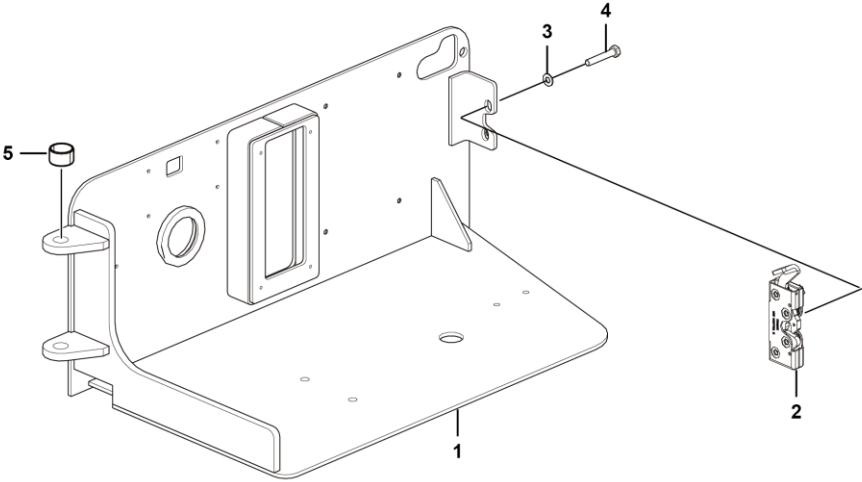
Battery tray components



D0801-2518000611.S1c

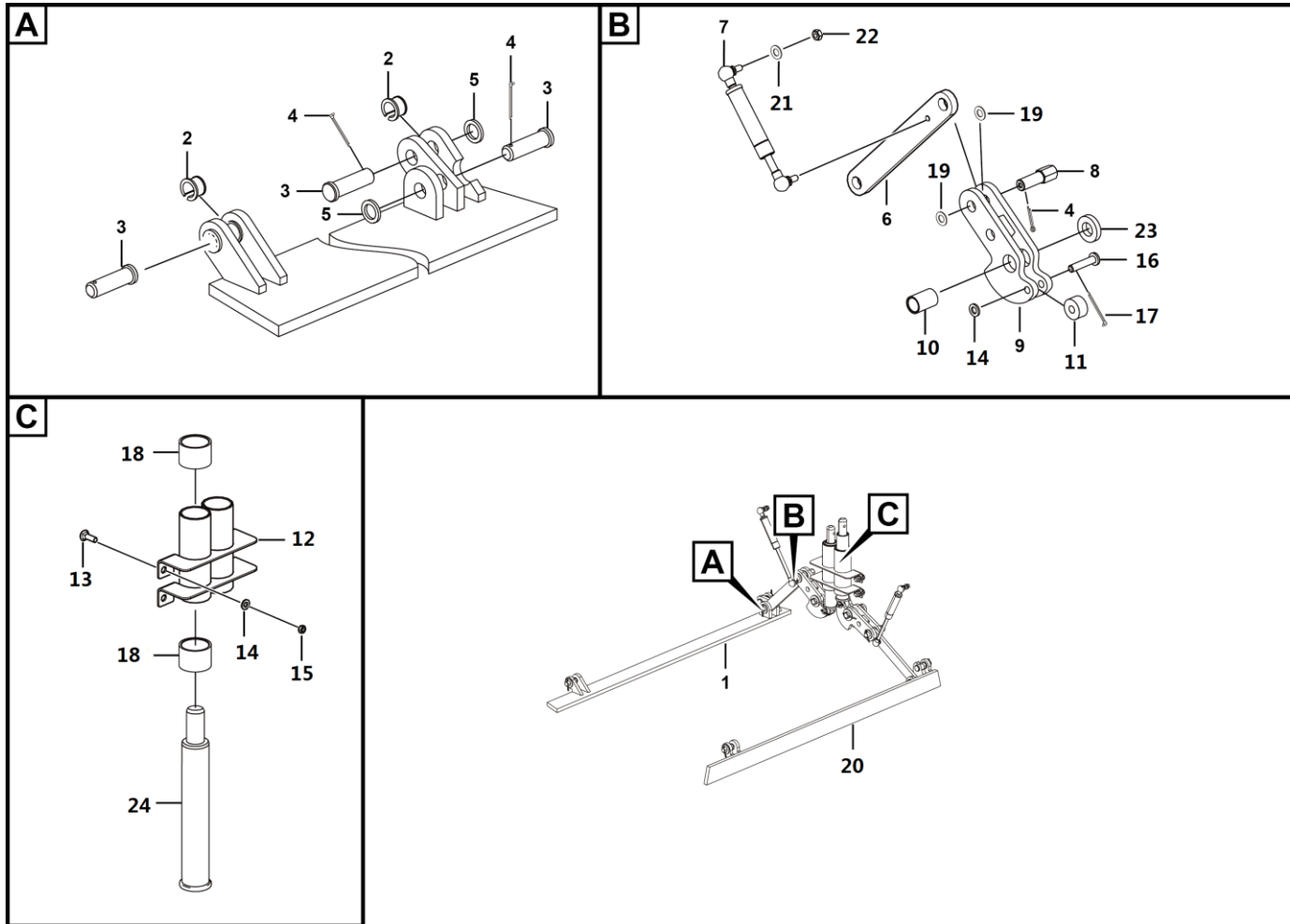
Key	Part No.	Description	Spare parts Y/N	Qty	Remarks
1	4190704138	Self-lubricating bushing sf-1f20115	Y	2	
2	4013010297	Nut gb889.1-m8flznyc-8-480	Y	1	
3	4015010280	Washer gb97.1-8flznyc-480	Y	1	
4	25180005732	Screw	Y	1	
5	25180004001	Rubber plate, fixing screw, battery side	Y	1	
6	25180004011	Pressure plate, fixing screw, battery side	Y	1	
7	25180005742	Rubber plate, fixing screw, battery side	Y	2	
8	25180006122	Weldment, battery box assembly	Y	1	
9	4011010717	Bolt gb5783-m6*30flznyc-8.8-480	Y	2	
10	4015010296	Washer gb96.1-6flznyc-480	Y	2	
11	4190002250	Right side lock (trimark 50076), battery box side body	Y	1	
12	25180001551	Insulating sleeve, $\phi 8 \times 380$	Y	1	
13	4013010293	Nut gb6170-m6flznyc-8-480	Y	2	
14	4015010284	Washer gb97.1-6flznyc-480	Y	2	
15	25180001542	Screw	Y	1	

Tank side



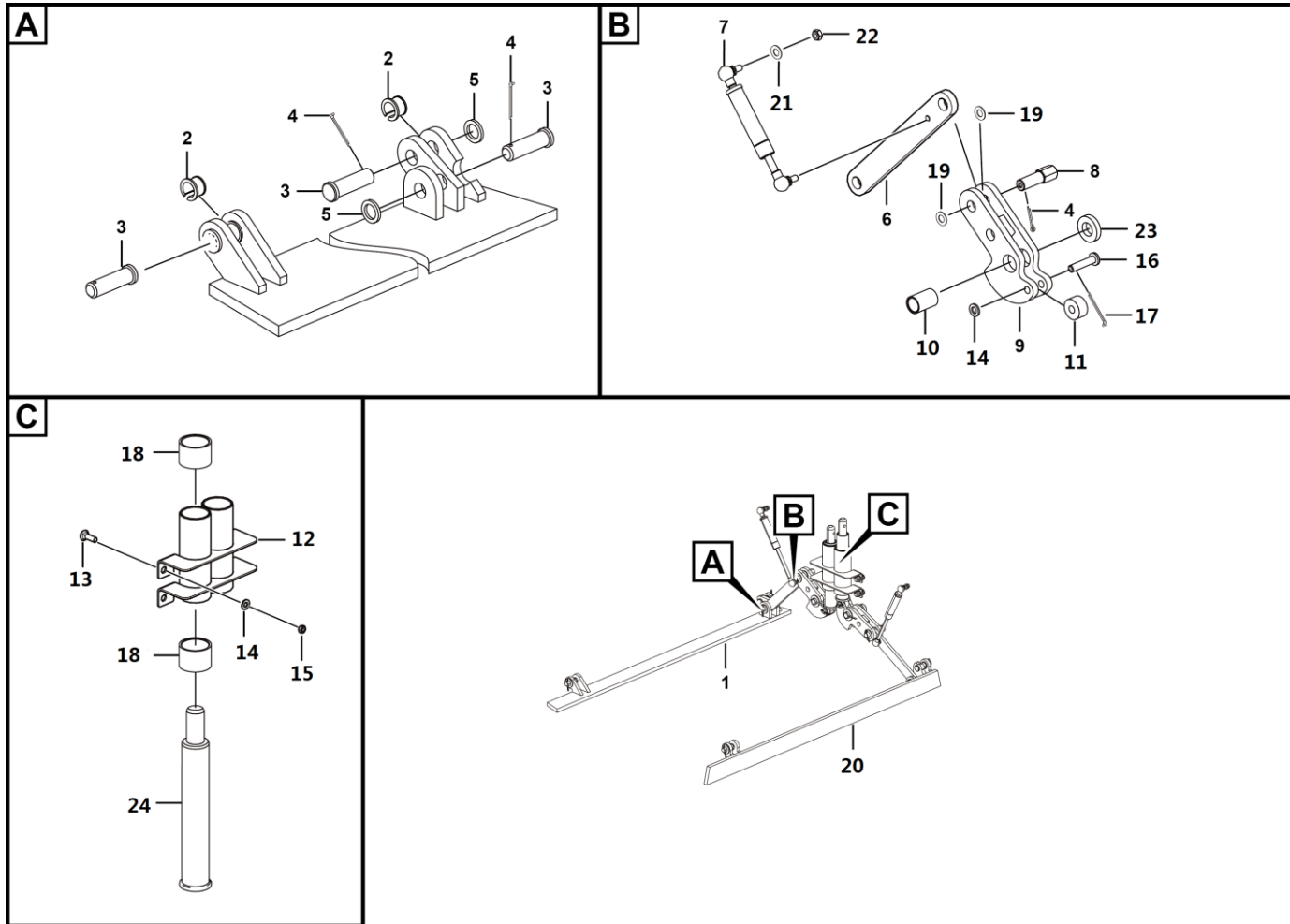
D0802-2518000666.S1a

Hollow protect system

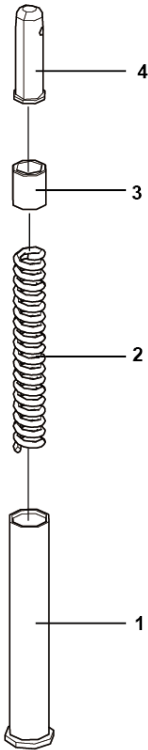


Key	Part No.	Description	Spare parts Y/N	Qty	Remarks
1	25190002462	Weldment, right guard	Y	1	
2	25190000171	Shaft sleeve16, 19*11	Y	4	
3	25190000242	Pin16, 16*54	Y	6	
4	4016010137	Cotter pin gb91-4*28flznyc-480-q235a	Y	8	
5	4015010287	Washer gb97.1-16flznyc-480	Y	8	
6	25190000421	Linkage, pithole protection mechanism	Y	2	
7	25190000212	Gas spring,10/22-80-245 (o-o) 400	Y	2	
8	25190000431	Gas spring pin ,16*44	Y	2	
9	25190000402	Connecting rod weldment	Y	2	
10	25190000181	Shaft sleeve20, 25*20*37	Y	2	
11	25190000221	Roller, 28*10*15	Y	2	
12	25190003361	Fastening assembly	Y	1	
13	4011011165	Bolt gb14-m10*35flznyc-8.8-480	Y	4	
14	4015010339	Washer gb97.1-10flznyc-300hv-480	Y	6	
15	4013010296	Nut gb889.1-m10flznyc-8	Y	4	
16	25190000231	Pin10, 10*46	Y	2	
17	4016010138	Cotter pin gb91-3.2*26flznyc-480-q235a	Y	2	
18	25200000141	Shaft sleeve,45*38*32	Y	4	
19	25190000192	Shim16, 30*16*2	Y	4	
20	25190002472	Weldment, left guard	Y	1	
21	4015010280	Washer gb97.1-8flznyc-480	Y	2	
22	4013010297	Nut gb889.1-m8flznyc-8-480	Y	2	

Hollow protect system



Pressing shaft assembly



Key	Part No.	Description	Spare parts Y/N	Qty	Remarks
1	25190003181	Tube assembly, 38*216	Y	1	
2	25190000351	Spring,φ6.5*23*178	Y	1	
3	25190000301	Shaft sleeve,32*25*35	Y	1	
4	25190000291	Shaft,25*86	Y	1	

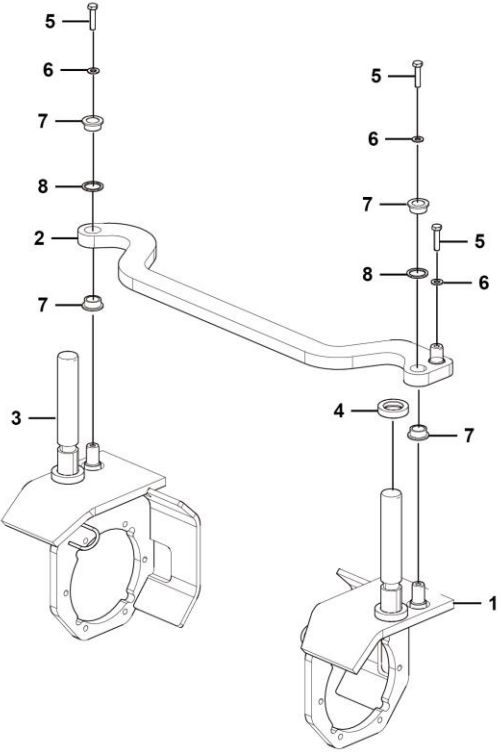


F
STEERING SYSTEM



LINGONG GROUP JINAN HEAVY MACHINERY CO., LTD.

Steering arm



F1200-2517000192.S1b

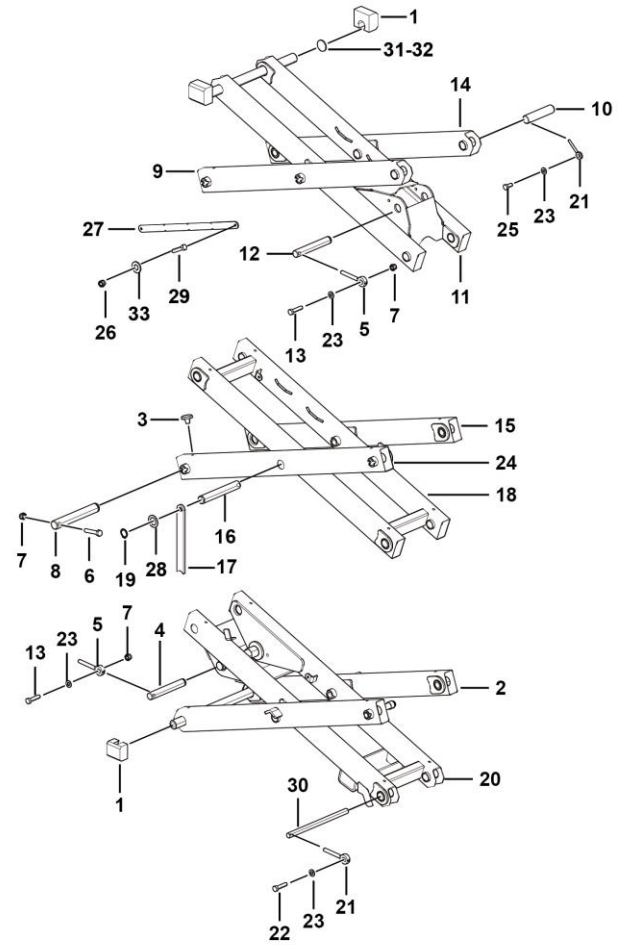
Key	Part No.	Description	Spare parts Y/N	Qty	Remarks
1	25170001934	Weldment,right knuckle	Y	1	
2	25170005051	Weldment, steering plate weldment	Y	1	
3	25170001944	Weldment,left knuckle	Y	1	
4	25170000941	Copper washer, 50*31.75*11	Y	2	
5	4011010711	Bolt gb5783-m8*20flznyc-8.8-480	Y	3	
6	4015010289	Washer gb96.1-8flznyc-480	Y	3	
7	25170000461	Bushing, 25.4*10	Y	4	
8	25170001071	Washer 25.4	Y	2	

G
SCISSOR ASSY INSTALLATION ASSEMBLY



LINGONG GROUP JINAN HEAVY MACHINERY CO., LTD.

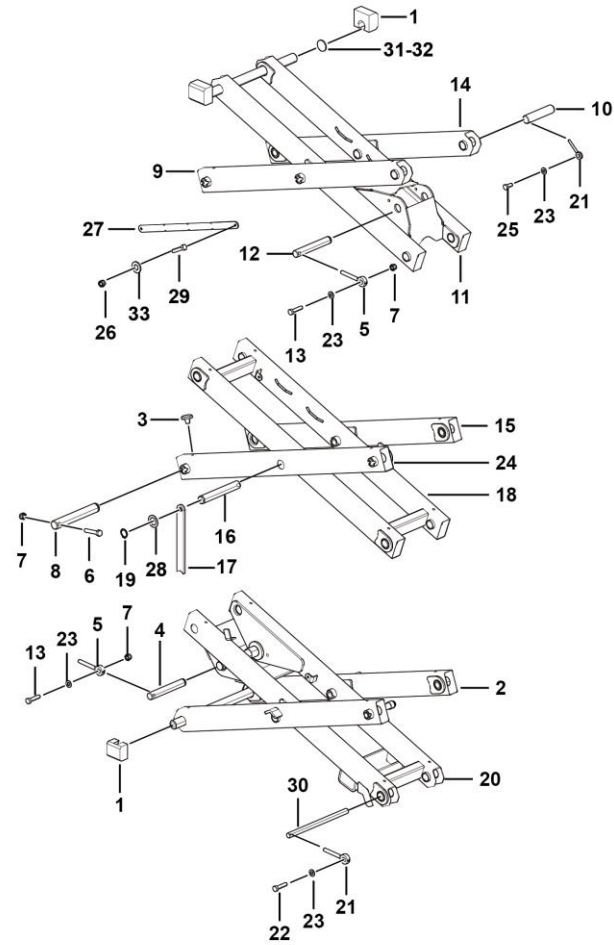
Scissor installation assembly



G1300-2520001661.S1b

Key	Part No.	Description	Spare parts Y/N	Qty	Remarks
1	25200005991	Slider	Y	4	
2	25200016623	Outer arm	N	1	
3	25200000402	Rubber plug,14*11	Y	16	
4	25200006102	Shaft, 38.1*240	Y	1	
5	25200000641	Pin, 10*70	Y	2	
6	4011010741	Bolt gb5782-m10*55flznyc-8.8-480	Y	14	
7	4013010296	Nut gb889.1-m10flznyc-8	Y	16	
8	25200016421	Shaft, 25.4*168.5	N	12	
9	25200016642	Outer arm	N	1	
10	25200006131	Shaft,25.4*402	Y	2	
11	25200012334	Inner arm	Y	1	
12	25200008162	Shaft, 38.1*190	Y	1	
13	4011010706	Bolt gb5783-m10*40flznyc-8.8-480	Y	2	
14	25200016662	Outer arm	N	1	
15	25200016682	Outer arm	N	1	
16	25200016411	Shaft, 25.4*181	N	2	
17	25200006001	Support plate, fork frame	Y	2	
18	25200016702	Inner arm	N	1	
19	4015010291	Snap ring jb4342-25flznyc-65mn-480	Y	14	
20	25200016724	Inner arm	N	1	
21	25200008311	Pin, 6.5*46	Y	3	
22	4011010722	Bolt gb5783-m10*25flznyc-8.8-480	Y	1	

Scissor installation assembly



G1300-2520001661.S1b

Key	Part No.	Description	Spare parts Y/N	Qty	Remarks
23	4015010279	Washer gb97.1-10flznyc-480	Y	5	
24	25200016742	Outer arm	N	1	
25	4011010748	Bolt gb5783-m10*20flznyc-8.8-480	Y	2	
26	4013000189	Nut gb889.1-m10epzn-8	Y	4	
27	25200006033	Wiring board, fixing harness	Y	2	
28	25200006111	Gasket, 40*25.4*2	Y	14	
29	4011010707	Bolt gb5783-m10*30flznyc-8.8-480	Y	4	
30	25200006121	Shaft, 25.4*402	Y	1	
31	25200006641	Plate, adjusting gap between slide and rail	Y	4	
32	25200006651	Plate, adjusting gap between slide and rail	Y	4	
33	4015010278	Washer gb96.1-10flznyc-480	Y	4	

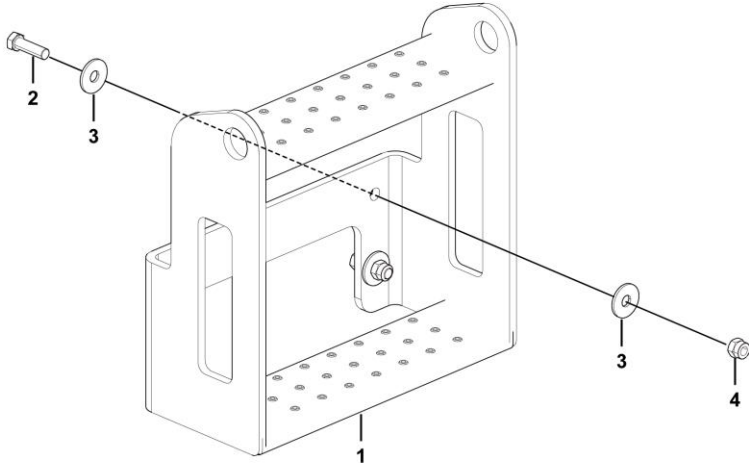


I
COVER ACCESSORY



LINGONG GROUP JINAN HEAVY MACHINERY CO., LTD.

Ladder



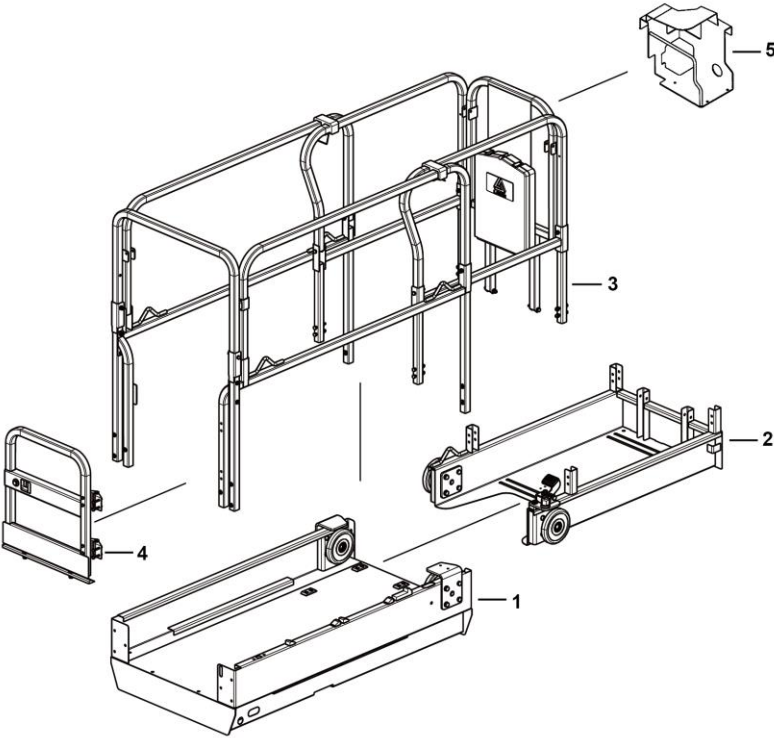
Key	Part No.	Description	Spare parts Y/N	Qty	Remarks
1	25290002623	Ladder	Y	1	
2	4011010723	Bolt gb5783-m12*40flznyc-8-480	Y	4	
3	4015010282	Washer gb97.1-12flznyc-480	Y	8	
4	4013010301	Nut gb889.1-m12flznyc-8-480	Y	4	

K
PLATFORM ASSEMBLY

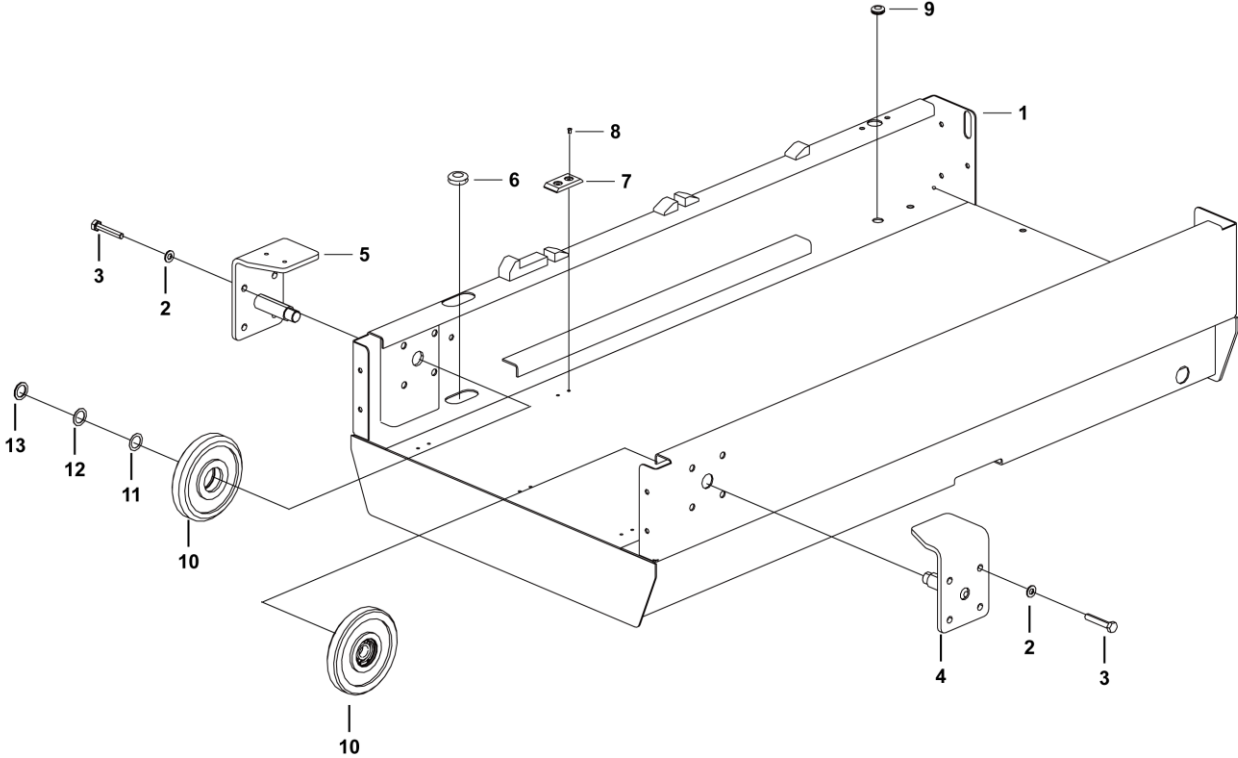


LINGONG GROUP JINAN HEAVY MACHINERY CO., LTD.

Platform assembly

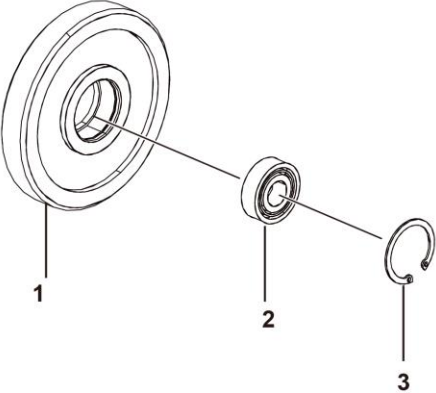


Main platform



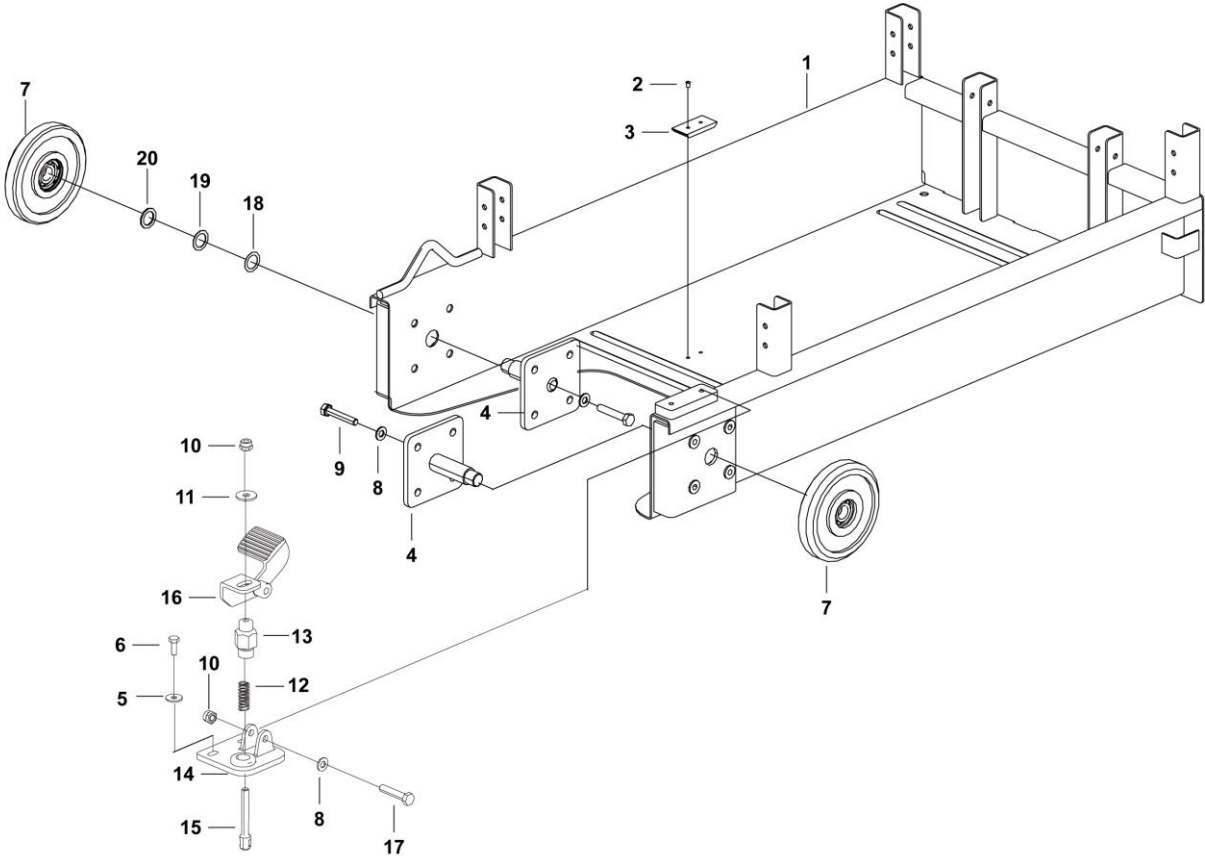
Key	Part No.	Description	Spare parts Y/N	Qty	Remarks
1	25210060271	Main platform weldment	Y	1	
2	4015010339	Washer gb97.1-10flznyc-300hv-480	Y	8	
3	4011010732	Bolt gb5782-m10*50flznyc-8.8-480	Y	8	
4	25210030191	Weldment, roller support	Y	1	
5	25210021043	Weldment, roller support	Y	1	
6	25210042571	Rubber gromet, 31*30*3	Y	3	
7	25210002601	Slider	Y	1	
8	4019010185	Break mandrel blind rivet gb12619-5x13	Y	2	
9	4190703908	Standard grommet 498055	Y	1	
10	25210035932	Roller assembly, φ146	N	2	
11	25210011191	Shim20*0.5	Y	2	
12	25210011181	Shim20*1	Y	2	
13	25210011171	Shim20*2	Y	2	

Roller assembly



K2100-2521003593.S

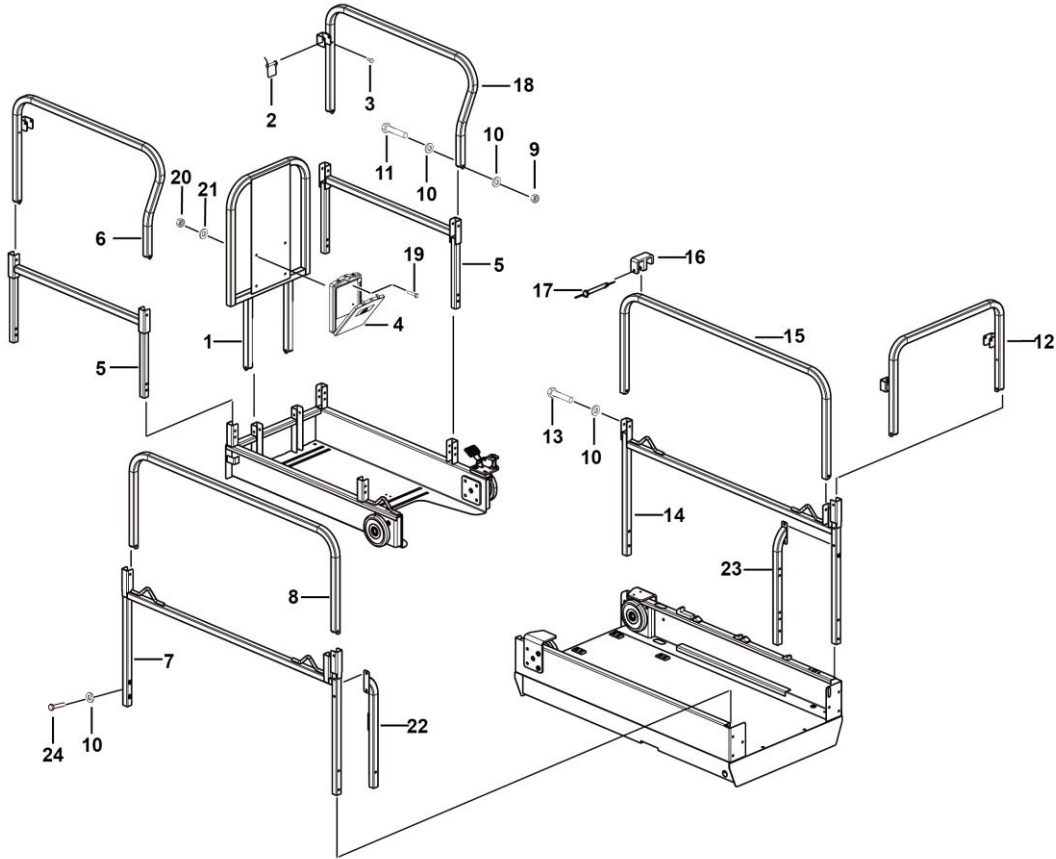
Extension platform



Key	Part No.	Description	Spare parts Y/N	Qty	Remarks
1	25210060212	Extended platform deck	Y	1	
2	4019010185	Break mandrel blind rivet gb12619-5x13	Y	4	
3	25210002601	Slider	Y	2	
4	25210030211	Weldment, roller support	Y	2	
5	25210002891	Spring seat, fixing spring, extension platform	Y	1	
6	4011011026	Bolt gb5783-m8*20flznyc-10.9-480	Y	2	
7	25210035932	Roller assembly, φ146	N	2	
8	4015010339	Washer gb97.1-10flznyc-300hv-480	Y	9	
9	4011010741	Bolt gb5782-m10*55flznyc-8.8-480	Y	8	
10	4013010296	Nut gb889.1-m10flznyc-8	Y	2	
11	4015010278	Washer gb96.1-10flznyc-480	Y	1	
12	25210002901	Spring,extension deck	Y	1	
13	4015010289	Washer gb96.1-8flznyc-480	Y	2	
14	25210012192	Forming (stamping, etc.), mount, fixing step, extension platform	Y	1	
15	25210002911	Spring pin, m10*73	Y	1	
16	25210036501	Forming (stamping, etc.), step, extension platform	Y	1	
17	4011011195	Bolt gb5782-m10*50flznyc-10.9-480	Y	1	
18	25210011171	Shim20*2	Y	2	
19	25210011191	Shim20*0.5	Y	2	
20	25210011181	Shim20*1	Y	2	



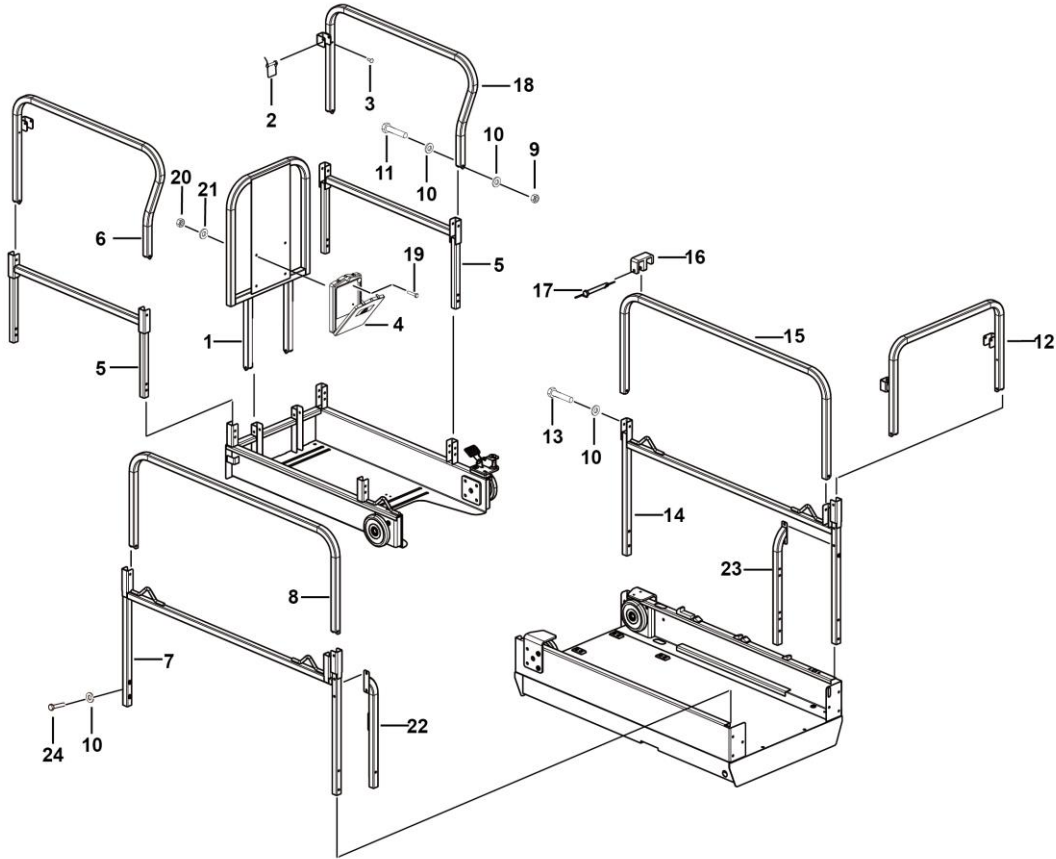
Ndrail assembly



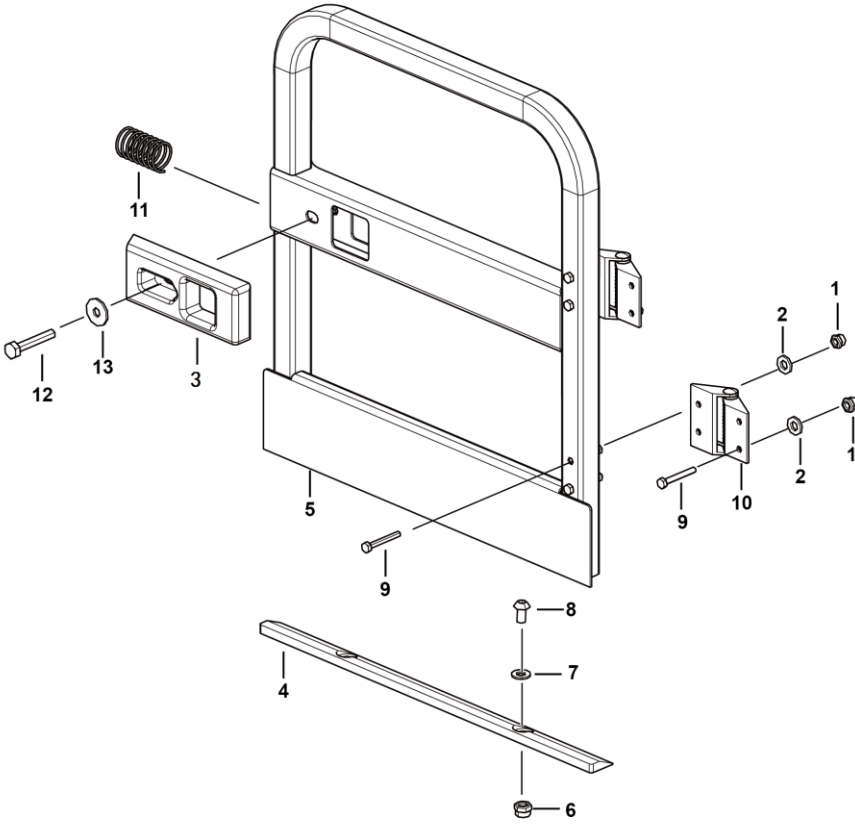
Key	Part No.	Description	Spare parts Y/N	Qty	Remarks
1	25210060231	Front handrail	Y	1	
2	4190703890	D-pin 8*65 with 200mm chain and steel sheet	Y	4	
3	4019010209	Break mandrel blind rivet gb12619-5*9	Y	4	
4	25210000821	Manual box	Y	1	
5	25210042721	Weldment, extension platform column assembly	Y	2	
6	25210042741	Weldment, extension platform guardrail assembly	Y	1	
7	25210042853	Weldment, main platform column assembly (lh)	Y	1	
8	25210042862	Weldment, main platform left rail weldment	Y	1	
9	4013010297	Nut gb889.1-m8flznyc-8-480	Y	28	
10	4015010280	Washer gb97.1-8flznyc-480	Y	62	
11	4011010919	Bolt gb5782-m8*55flznyc-8.8-480	Y	18	
12	25210042892	Weldment, door rail weldment, rail	Y	1	
13	4011010736	Bolt gb5782-m8*50flznyc-8.8-480	Y	12	
14	25210042833	Weldment, extension platform column assembly (rh)	Y	1	
15	25210042872	Weldment, main platform right rail weldment	Y	1	
16	25210013702	M-mount, fixing door, guardrail	Y	2	
17	4190002586	Pin - square pin with lug 9.5*70	Y	2	
18	25210042751	Weldment, extension platform guardrail (rh)	Y	1	
19	4011010757	Bolt gb16674-m6*20flznyc-8.8	Y	4	
20	4013010300	Nut gb889.1-m6flznyc-8-480	Y	4	
21	4015010284	Washer gb97.1-6flznyc-480	Y	4	
22	25210042923	Weldment, door railing assembly (lh), guardrail	Y	1	



Ndrail assembly



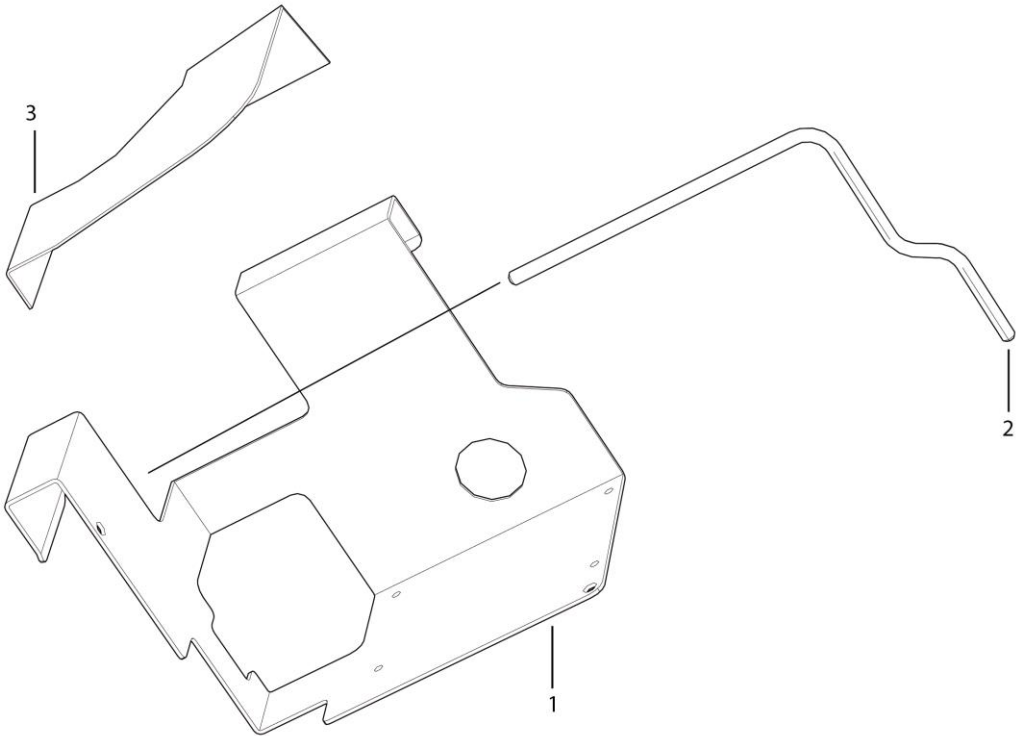
Semi-swing gate assembly



K2100-2521003740. S1a

Key	Part No.	Description	Spare parts Y/N	Qty	Remarks
1	4013010300	Nut gb889.1-m6flznyc-8-480	Y	8	
2	4015010284	Washer gb97.1-6flznyc-480	Y	8	
3	25210011051	Plastic block, platform gate	Y	1	
4	25210034751	Shim, adjusting gap between revolving door and bottom plate	Y	1	
5	25210034791	Swing gate weldment	Y	1	
6	4013010296	Nut gb889.1-m10flznyc-8	Y	3	
7	4015010279	Washer gb97.1-10flznyc-480	Y	2	
8	4014010182	Screw gb70.2-m10*25flznyc-8.8	Y	2	
9	4011010826	Bolt gb5782-m6*45flznyc-8.8-480	Y	8	
10	4190001525	Spring hinge x022	Y	2	
11	25210002071	Spring 1.4*6*50	Y	1	
12	4011010741	Bolt gb5782-m10*55flznyc-8.8-480	Y	1	
13	4015010278	Washer gb96.1-10flznyc-480	Y	2	

Bracket



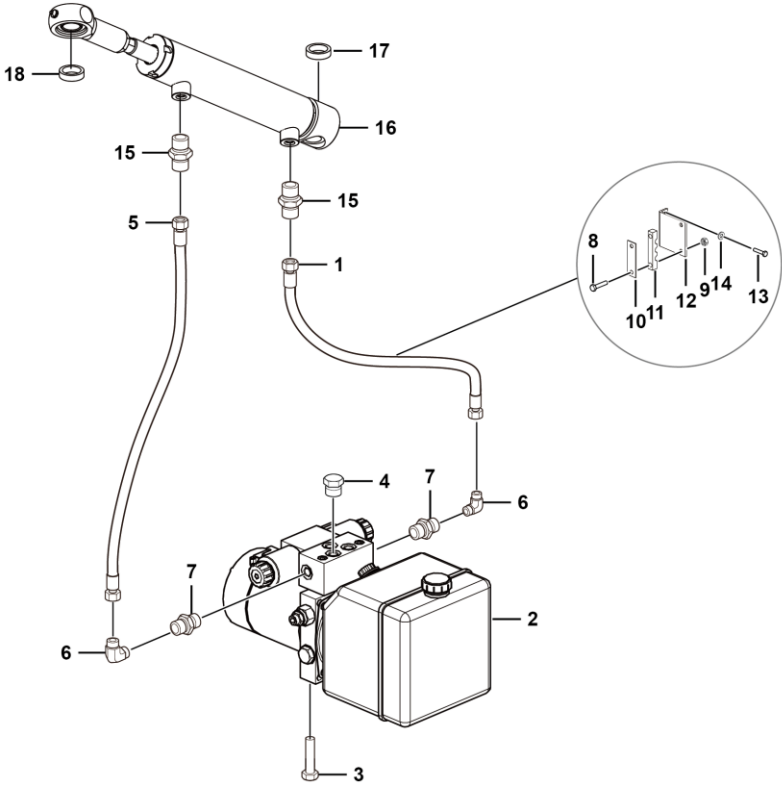
K2106-2521002803

L
HYDRAULIC SYSTEM



LINGONG GROUP JINAN HEAVY MACHINERY CO., LTD.

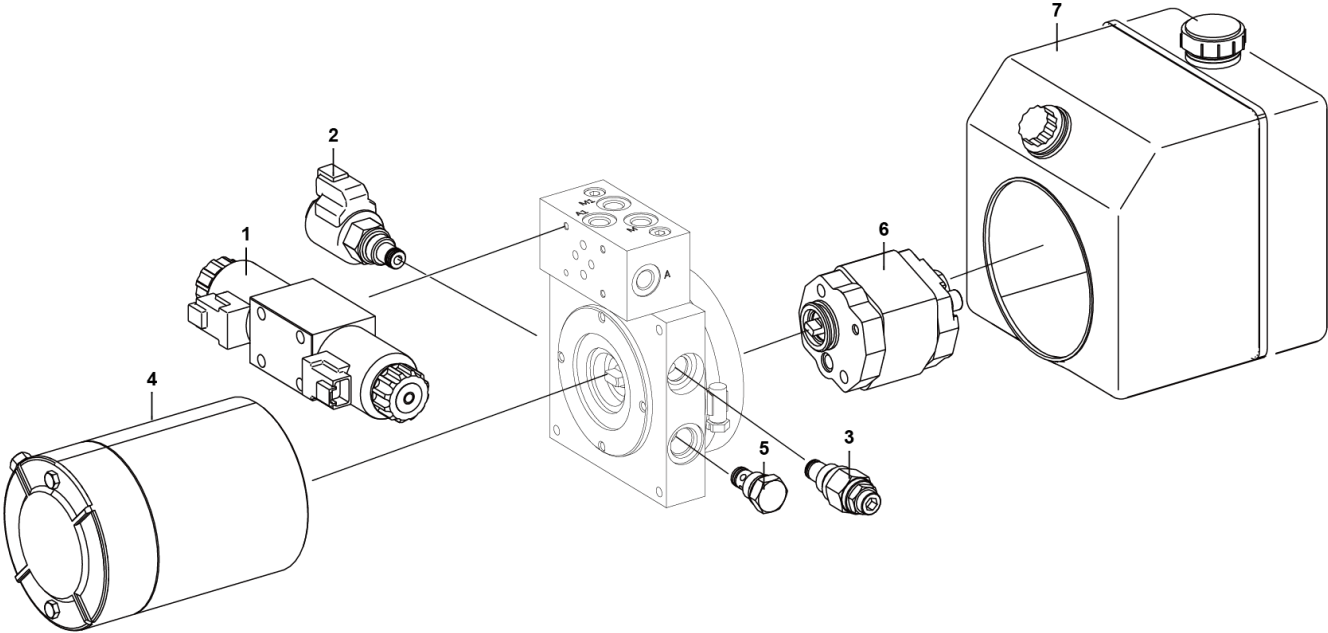
Drive system



L2300-2507000348.S1c

Key	Part No.	Description	Spare parts Y/N	Qty	Remarks
1	4120703452	Hose j20411-14-04tz*scp3-04*1250, power unit-steering cylinder	Y	1	
2	4120002290	Power unit dc-f47-1.1-e-1.6-24-24-4ph-c	Y	1	
3	4011010748	Bolt gb5783-m10*20flznyc-8.8-480	Y	2	
4	4120001227	Pressure tap ema3/1/4ed, φ20*49	Y	1	
5	4120703453	Hose j20411-14-04tz/20491-14-04tz*scp3-04*1400, power unit-steering cylinder	Y	1	
6	4120000868	Right-angle fitting 2c9-14z	Y	3	
7	4120001368	Fitting, hydraulic 1cb-14-04wd	Y	2	
8	4011010753	Bolt gb5783-m8*45flznyc-8.8-480	Y	2	
9	4013010314	Nut gb6185-m8flznyc-8	Y	2	
10	25070001641	Pressure plate, fixing oil pipe	Y	1	
11	25070001631	Pipe clamp 3*12, fixing oil pipe	Y	2	
12	25070002741	Weldment, bracket assembly, fixing oil pipe	Y	1	
13	4011010743	Bolt gb5783-m8*25flznyc-8.8-480	Y	2	
14	4015010280	Washer gb97.1-8flznyc-480	Y	2	
15	4120001340	Fitting 1co-14-04	Y	2	
16	4120703457	Steer cylinder 40*20*152.4-400	Y	1	
17	25070003131	Shaft sleeve, 27*20*11	Y	1	
18	25070003121	Shaft sleeve, 27*20*11	Y	1	

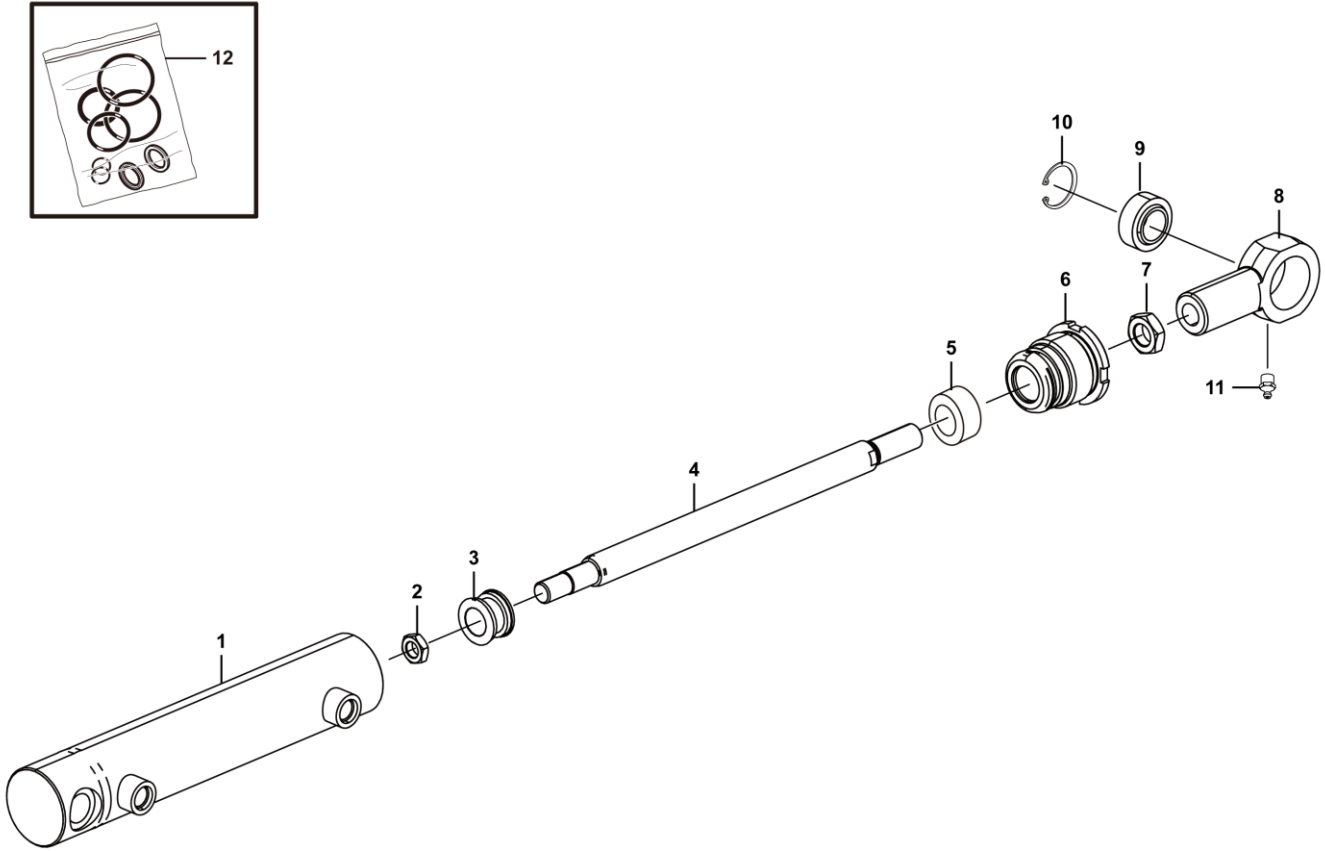
Power unit dc-f47-1.1-e-1.6-24-24-4ph-c



Key	Part No.	Description	Spare parts Y/N	Qty	Remarks
1	4120002290001	3-position 4-way solenoid valve wdmfa06-bea-g24/g/dc24v, controlling lifting and lowering	Y	1	
2	4120002290004	2-position 3-way plug-in solenoid valve sv08-21-0-n-20er, controlling lift and steering oil return	Y	1	
3	4120002290002	Relief valve assembly rvb0.s05.0b.bar, for limiting system pressure	Y	1	
4	4120002290007	Dc motor zd035-0w04-xx	Y	1	
5	4120002290003	Check valve cv2-08-03, limiting fuel return	Y	1	
6	4120002290006	Gear pump 1cpf1.1l01b02lbf	Y	1	
7	4120002290005	Plastic fuel tank pu-4.0va1-03-p	Y	1	

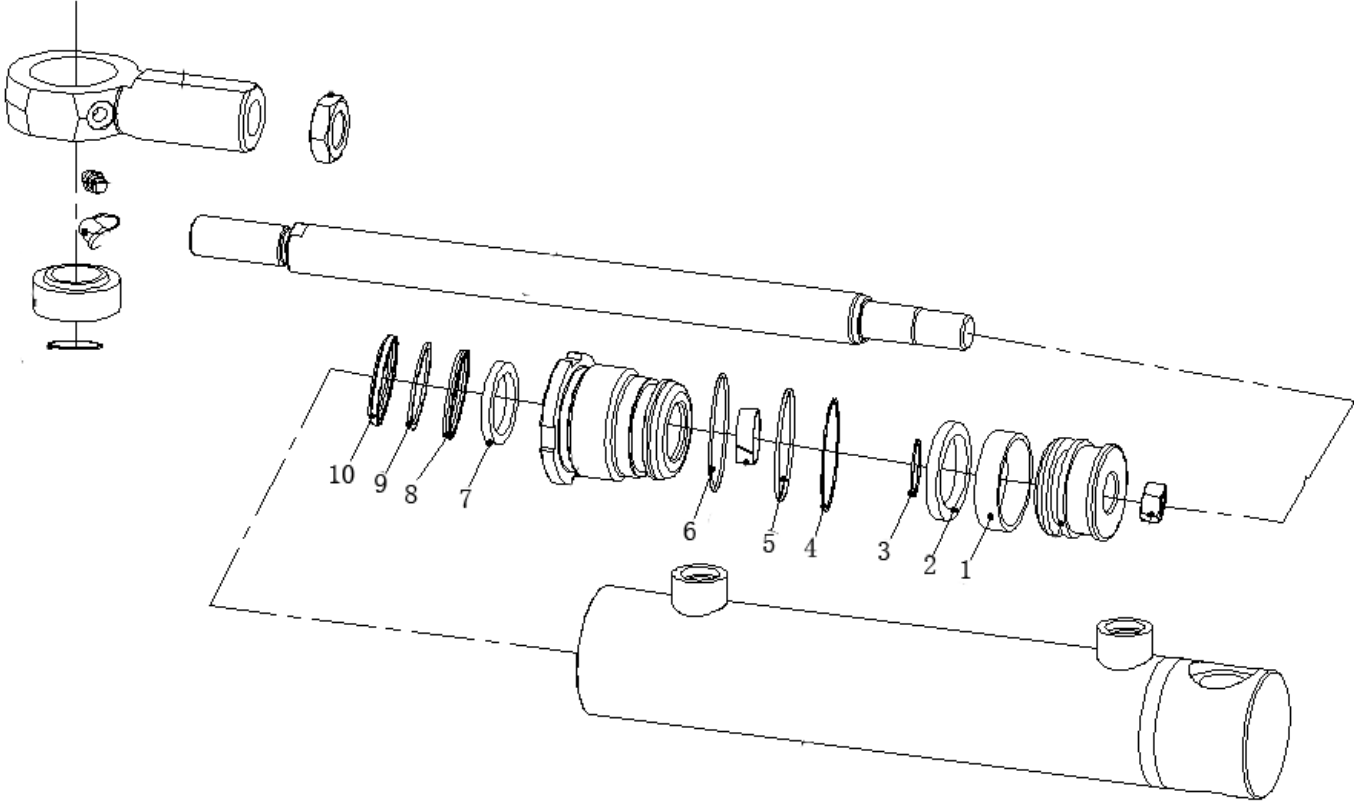


Steer cylinder 40*20*152.4



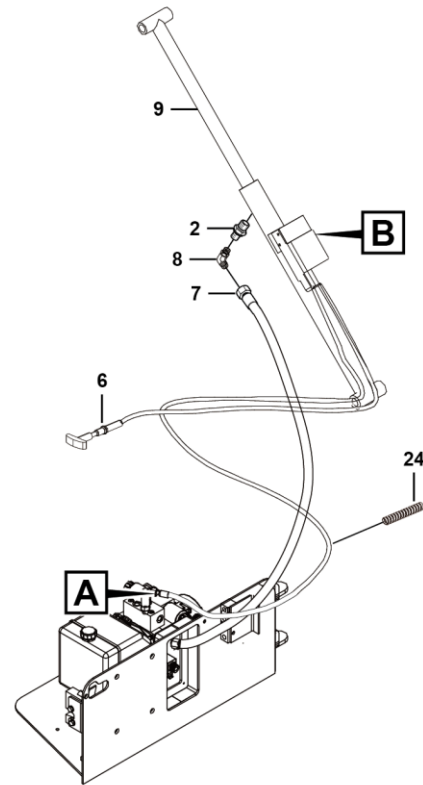
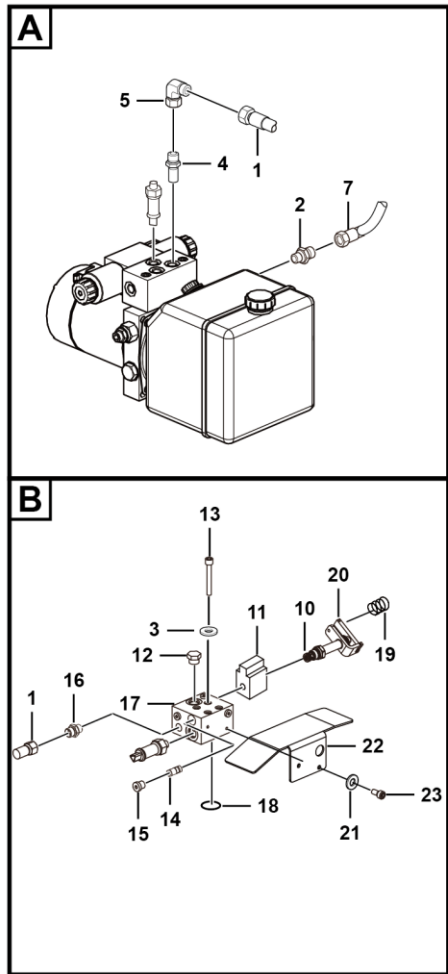
Key	Part No.	Description	Spare parts Y/N	Qty	Remarks
1	4120703457002	Cylinder tube 40*20*152.4	Y	1	
2	4120703457003	Nut (nylon) 40*20*152.4	Y	1	
3	4120703457004	Piston 40*20*152.4	Y	1	
4	4120703457005	Piston rod 40*20*152.4	Y	1	
5	4120703457006	Bushing 40*20*152.4	Y	1	
6	4120703457007	Cylinder cover 40*20*152.4	Y	1	
7	4120703457008	Nut (hexagon thin, fine teeth) 40*20*152.4	Y	1	
8	4120703457009	Piston rod head 40*20*152.4	Y	1	
9	4120703457010	Joint bearing 40*20*152.4	Y	1	
10	4120703457011	A-type snap ring for hole 40*20*152.4	Y	1	
11	4120703457012	Grease fitting 40*20*152.4	Y	1	
12	4120703457001	Seal kit 24a300540s	Y	1	

Seal kit 24a300540s



Key	Part No.	Description	Spare parts Y/N	Qty	Remarks
1	4120703457022	Support ring 24g204015	N	1	
2	4120703457021	Seal-piston 24p204002	N	1	
3	4120703457020	O-ring 24k301511	N	1	
4	4120703457018	Snap ring-o ring 24m10400c	N	1	
5	4120703457017	O-ring 24k10350a	N	1	
6	4120703457019	O-ring 24k304011	N	1	
7	4120703457013	Step seal 24f902001	N	1	
8	4120703457014	Seal-piston rod 24f202003	N	1	
9	4120703457015	Snap ring-u ring 24e00202c	N	1	
10	4120703457016	Seal-dustproof 24d50202j	N	1	

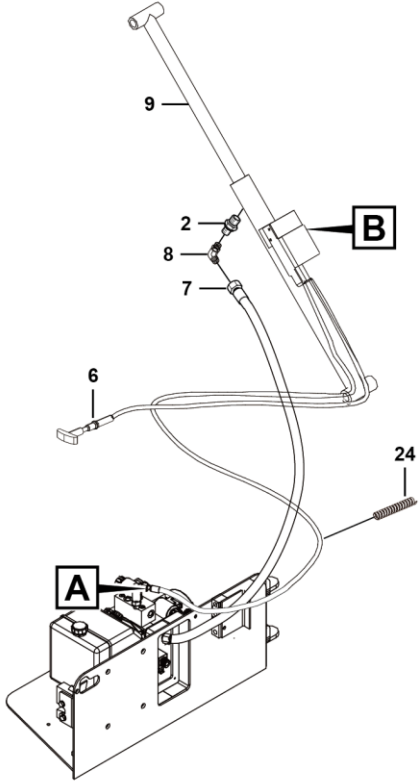
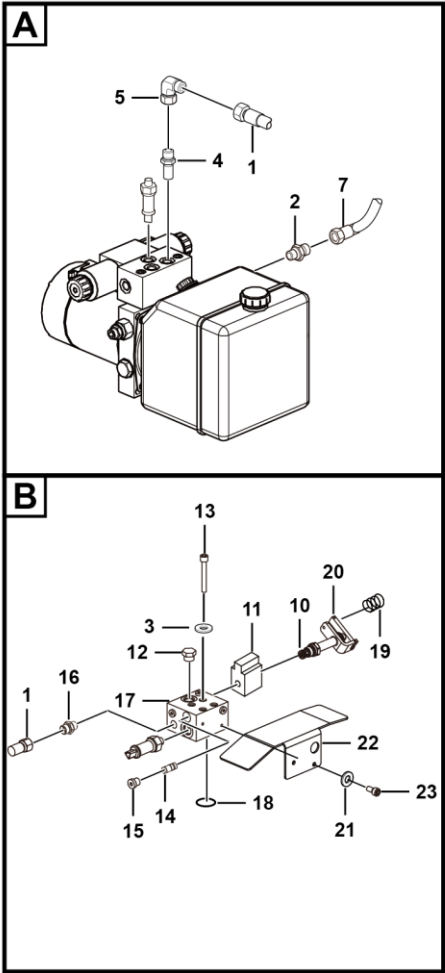
Lift system



L2400-2508000314.S1d

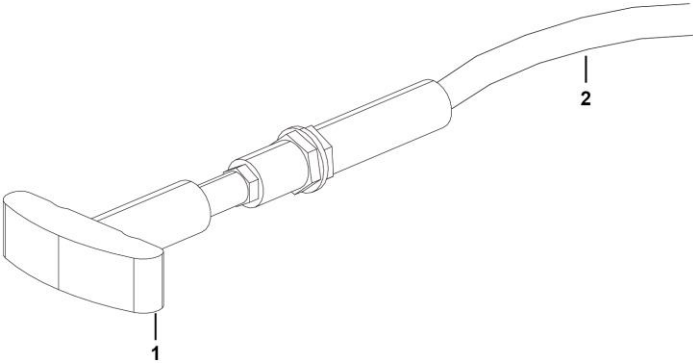
Key	Part No.	Description	Spare parts Y/N	Qty	Remarks
1	4120702832	Hose j20411-14-04tz*scp3-04*3250, power unit-cylinder valve block	Y	1	
2	4120001950	Fitting 1cb-12-04wd	Y	2	
3	25080002881	M8 hard gasket,16*8.5*3	Y	4	
4	4120001368	Fitting, hydraulic 1cb-14-04wd	Y	1	
5	4120000868	Right-angle fitting 2c9-14z	Y	1	
6	25080002023	Cable assembly	Y	1	
7	25080001672	Air pipe, cylinder-power unit	Y	1	
8	4120001951	Fitting 2c9-12	Y	1	
9	4120703499	Lift cylinder seal kit 60*45*620-930	Y	1	
10	4120703713	Pressure reversing valve	Y	1	
11	4120002472	Coil d2ds100	Y	1	
12	4120001130	Check valve cv08-20-0-n-10, preventing oil from flowing back	Y	1	
13	4014010231	Bolt gb5782-m8*65flznyc-12.9-480	Y	4	
14	4120001723	One-way throttle valve 1.3, controlling the flow rate and preventing oil from flowing back	Y	1	
15	4120002398	Plug 4mn-14wd	Y	1	
16	4120001495	Fitting, hydraulic 1cb-14-06wd	Y	1	
17	25080005061	Cylinder valve block assembly	Y	1	
18	4120002399	O-ring 10.77*2.62	Y	1	
19	25080001331	Spring 1.5*15*30	Y	1	
20	25080001271	Reversing valve bracket assembly	Y	1	
21	4015010284	Washer gb97.1-6flznyc-480	Y	2	
22	25080003681	weldment ,valve block guard plate assembly	Y	1	

Lift system



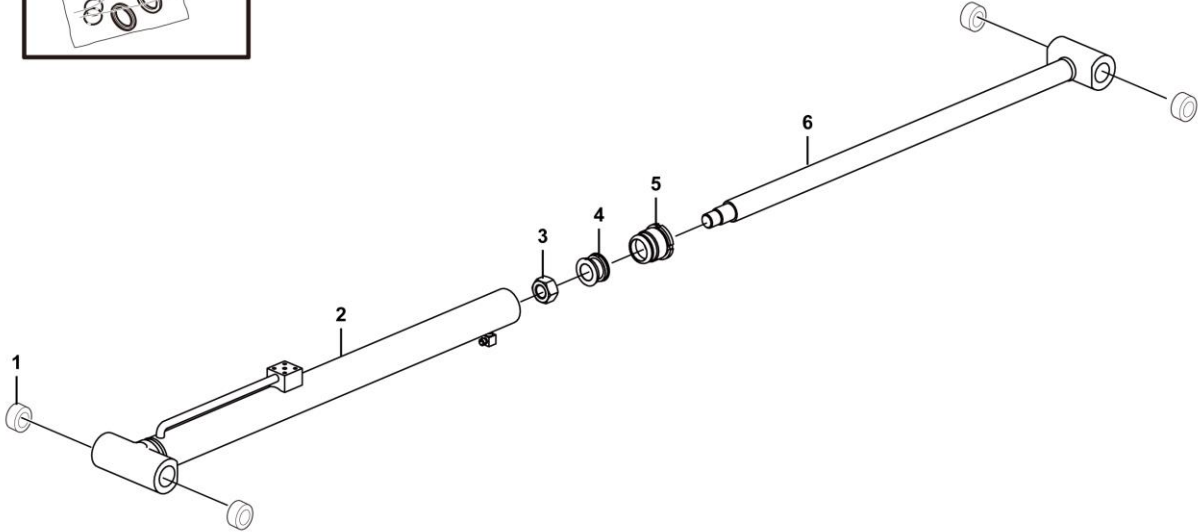
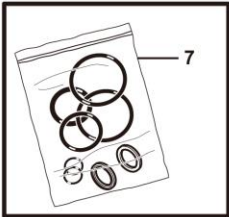
L2400-2508000314.S1d

Cable assembly

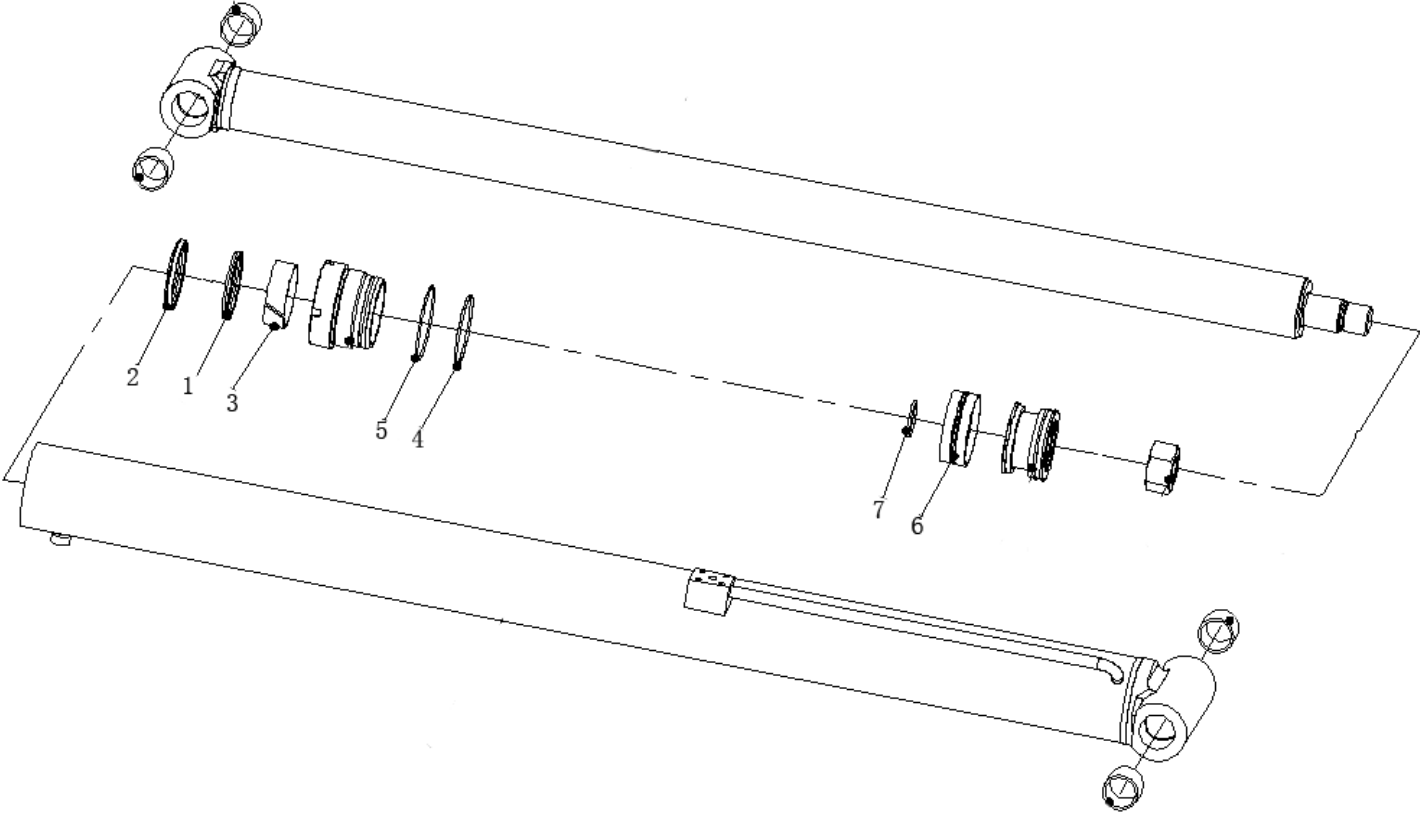


L2400-2508000202.S3b

Lift cylinder seal kit 60*45*620-930



Seal kit 24a300610s



Key	Part No.	Description	Spare parts Y/N	Qty	Remarks
1	4120001450002	Seal-piston rod 24f204503	N	1	
2	4120001450003	Seal-dustproof 24d504502	N	1	
3	4120703499008	Support ring 24g304552	N	1	
4	4120703499009	O-ring 24k10550a	N	1	
5	4120001450006	O-ring 24k306001	N	1	
6	4120001450007	Seal-piston 24p606000	N	1	
7	4120703499010	O-ring 24k103506	N	1	

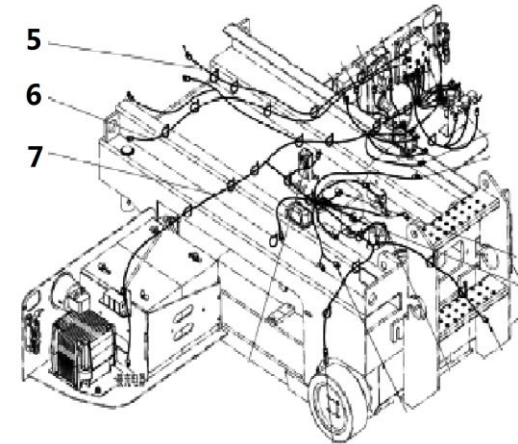
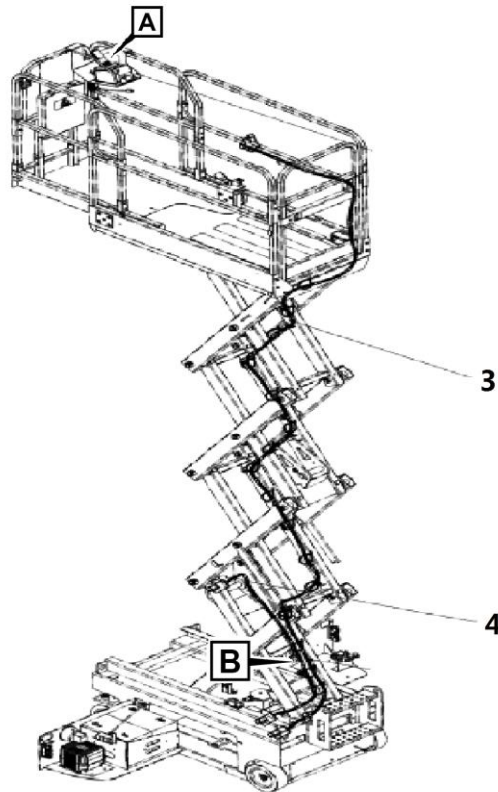
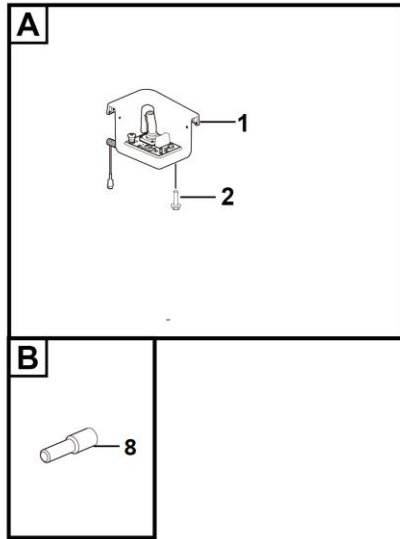


M
ELECTRIC SYSTEM



LINGONG GROUP JINAN HEAVY MACHINERY CO., LTD.

Electricity assembly

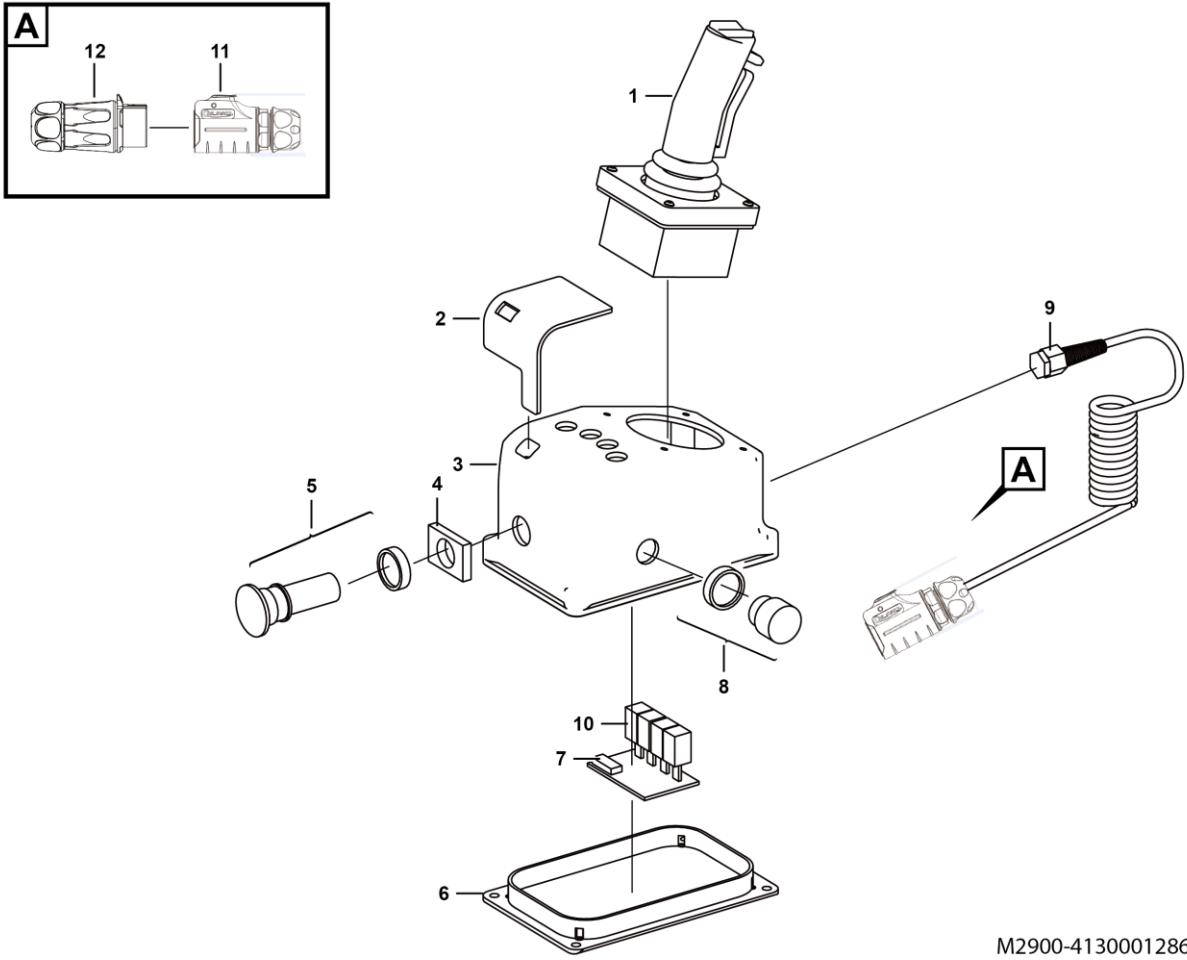


M2900-2530000974.S

Key	Part No.	Description	Spare parts Y/N	Qty	Remarks
1	4130001286	Platform controller	Y	1	
2	4011010754	Bolt gb16674-m6*12flznyc-8.8	Y	4	
3	25300004571	Pcu harness,main harness-platform controller	Y	1	
4	25300007261	Wire	Y	1	
5	25300001923	Right motor connection harness, mcu-motor	Y	1	
6	25300001933	Left motor connection harness, mcu-motor	Y	1	
7	25300009822	Main wire	Y	1	
8	4130701538	Pressure sensor	Y	1	



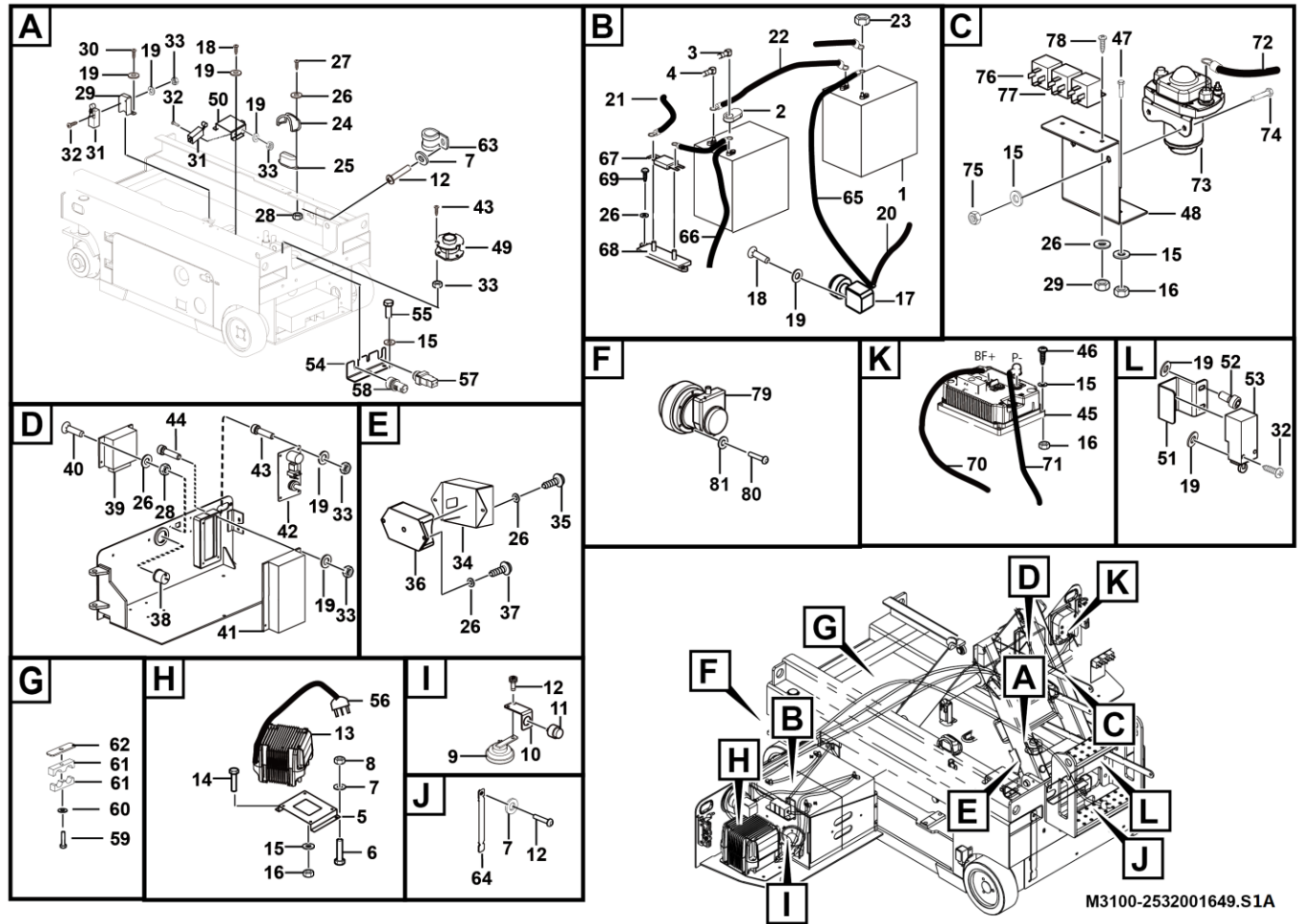
Platform controller



M2900-4130001286

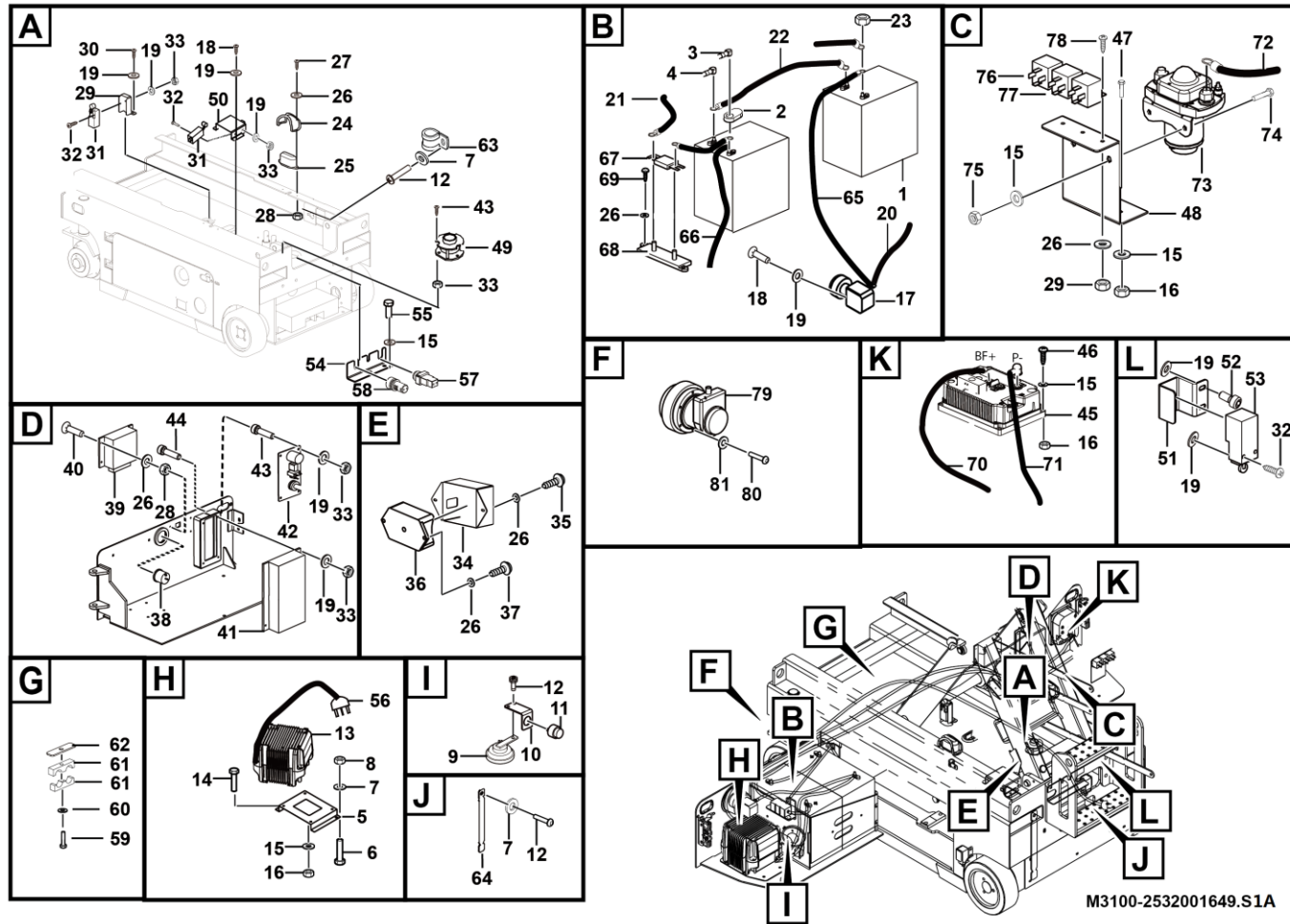
Key	Part No.	Description	Spare parts Y/N	Qty	Remarks
1	4130000862002	Platform controller handle	Y	1	
2	4130000862001	Platform controller sticker	Y	1	
3	4130000862003	Box body	Y	1	
4	4130000862004	Emergency stop switch base	Y	1	
5	4130000862005	Emergency stop switch cap	Y	1	
6	4130000862006	Box cover	Y	1	
7	4130000862007	Pcba	Y	1	
8	4130000862008	Buzzer	Y	1	
9	4130001046009	Spring harness 200011	Y	1	
10	4130000862010	Button cap	Y	1	
11	25300003281	Cnlinko connector (upper controller end), platform controller	Y	1	
12	25300003271	Cnlinko connector (pcu harness end), platform controller-pcu harness	Y	1	

Chassis electric systems



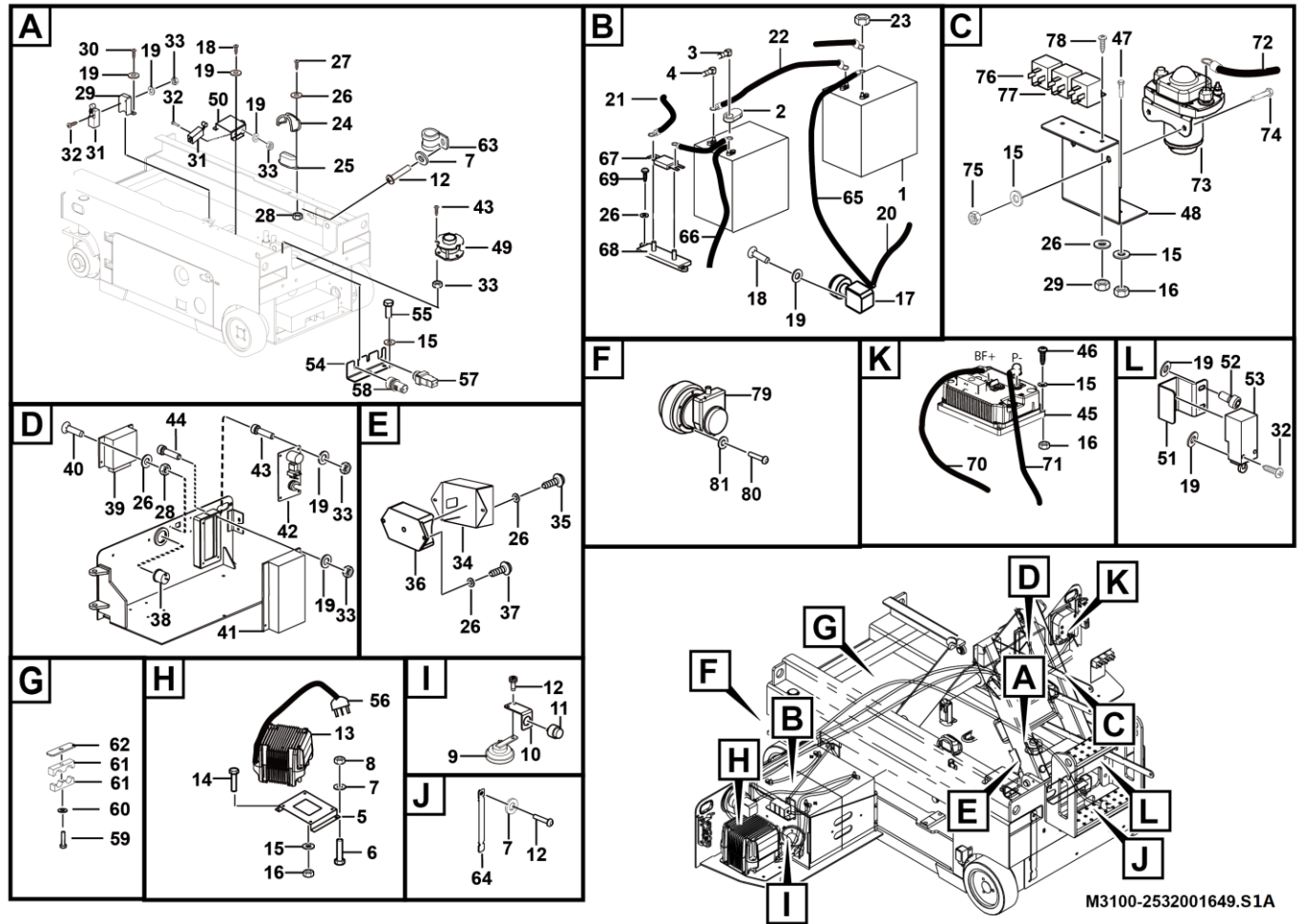
Key	Part No.	Description	Spare parts Y/N	Qty	Remarks
1	4130701436	Battery 27tmh	Y	2	
2	25320000171	Terminal cover	Y	4	
3	25320015671	Power cable cap - red	Y	7	
4	25320015681	Power cable cap - black	Y	7	
5	25320010881	Forming (stamping, etc.), charger bracket	Y	1	
6	4011010719	Bolt gb5783-m8*25flznyc-8-480	Y	3	
7	4015010289	Washer gb96.1-8flznyc-480	Y	12	
8	4013010297	Nut gb889.1-m8flznyc-8-480	Y	3	
9	4130000906	Monophonic disc woofer	Y	1	
10	25320006441	Forming (pressing, etc.), buzzer mounting plate	Y	1	
11	4130000797	Buzzer,cy-3631-24v	Y	1	
12	4011010746	Bolt gb5783-m8*12flznyc-8.8-480	Y	7	
13	4130704189	Battery charger	Y	1	
14	4014010119	Screw gb70.1-m6*25flznyc-8.8-480	Y	4	
15	4015010284	Washer gb97.1-6flznyc-480	Y	26	
16	4013010300	Nut gb889.1-m6flznyc-8-480	Y	12	
17	4130001123	Dc power switch zdk31-250	Y	1	
18	4014010120	Screw gb818-m5*8flznyc-4.8-480	Y	6	
19	4015010283	Washer gb97.1-5flznyc-480	Y	38	
20	25320004133	Power cord35*2260 , dc power switch	Y	1	
21	25320014022	Power cord p35*2060 , fuse	Y	1	
22	25320003132	Power cord p35*100 , battery-to-battery connection	Y	1	

Chassis electric systems



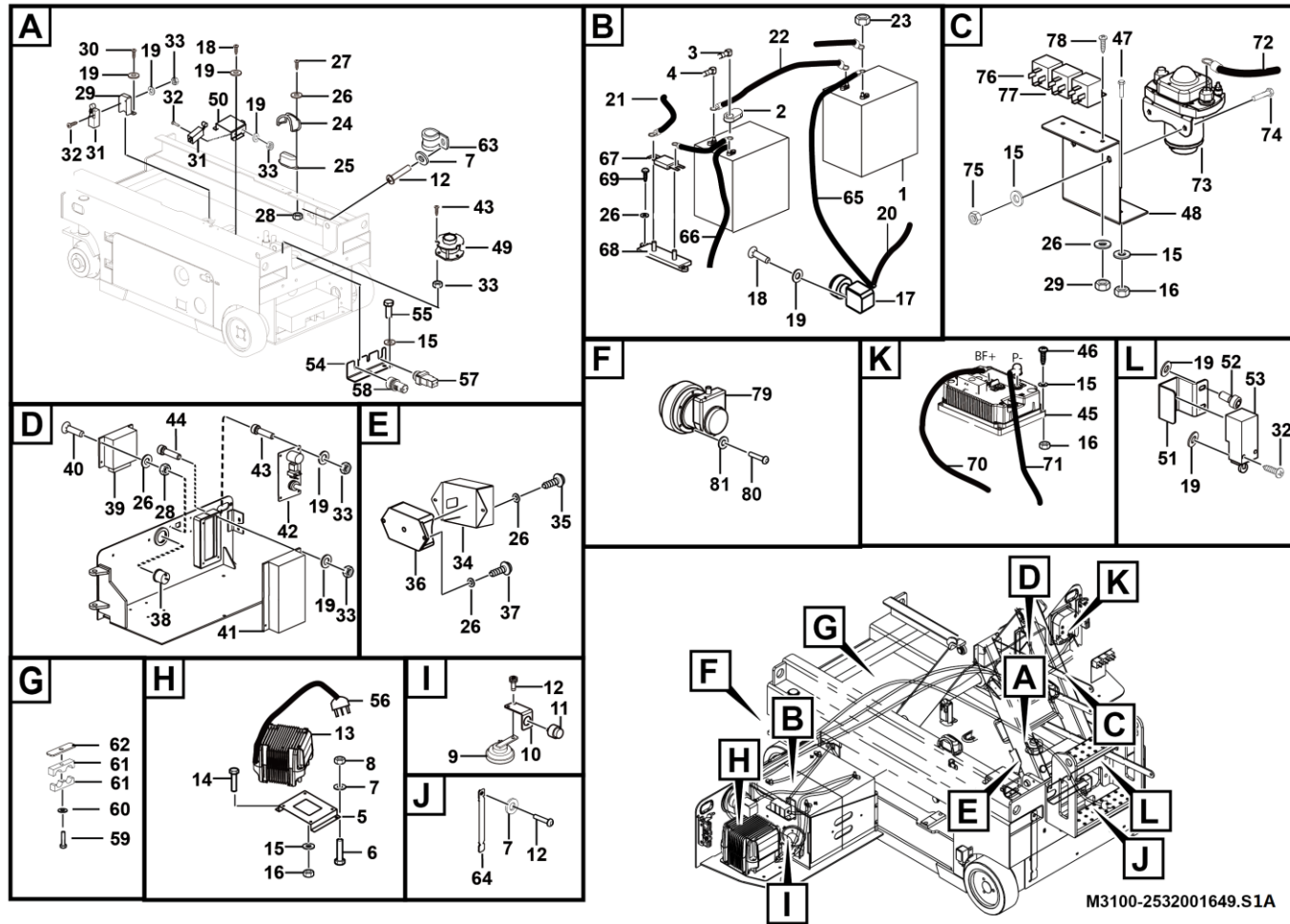
Key	Part No.	Description	Spare parts Y/N	Qty	Remarks
23	4013010382	Ifi145-2002-hexagon flange nut 5/16-18unc-2b	Y	4	
24	25320000192	Housing, operating indicator	Y	2	
25	4130000729	Operating indicator	Y	2	
26	4015010290	Washer gb97.1-4flznyc-480	Y	26	
27	4014010121	Screw gb818-m4*20flznyc-4.8-480	Y	4	
28	4013010304	Nut gb6170-m4flznyc-8-480	Y	11	
29	25320003222	Forming (stamping, etc.), upper limit plate, protective limit switch	Y	1	
30	4014010122	Screw gb70.1-m5*20flznyc-8.8-480	Y	4	
31	4130000796	Limit switch cls-121	Y	2	
32	4014010123	Screw gb70.1-m5*40flznyc-8.8-480	Y	10	
33	4013010305	Nut gb889.1-m5flznyc-8-480	Y	11	
34	25320000351	Weldment, angle sensor housing	Y	1	
35	4014010124	Screw gb818-m4*6flznyc-4.8-480	Y	2	
36	4130000734	Angle sensor sysa	Y	1	
37	4014010125	Screw gb818-m4*10flznyc-4.8-480	Y	2	
38	4130000726	Timetable	Y	1	
39	4130702417	Ecu	Y	1	
40	4014010126	Screw gb70.3-m4*16flznyc-8.8-480	Y	4	
41	25320004102	Weldment, lower control panel shield	Y	1	
42	4130001288	Ground control panel	Y	1	
43	4014010127	Screw gb70.1-m5*10flznyc-8.8-480	Y	5	
44	4014010113	Screw gb70.1-m5*25flznyc-8.8	Y	2	

Chassis electric systems



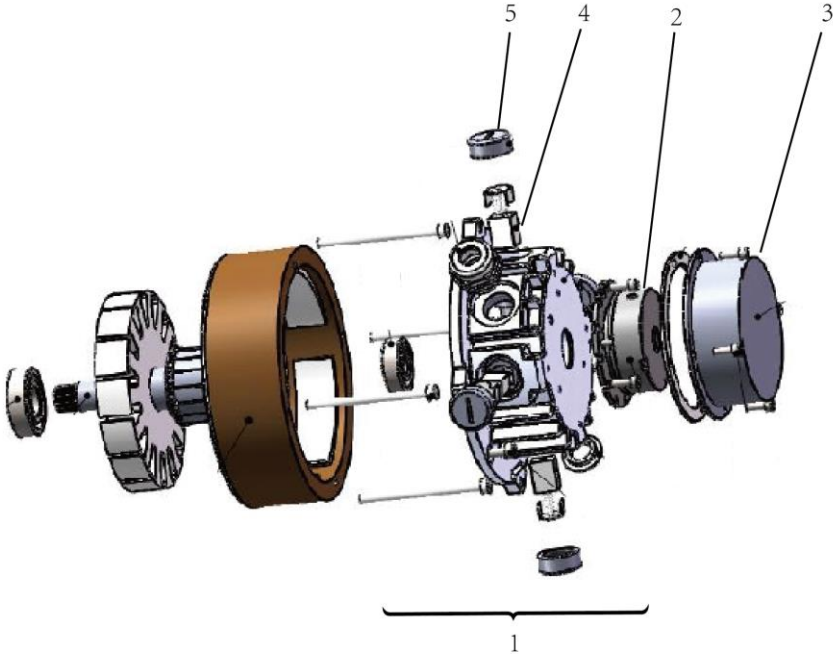
Key	Part No.	Description	Spare parts Y/N	Qty	Remarks
45	4130701503	Motor controller	Y	1	
46	4014010129	Screw gb70.3-m6*30flznyc-8.8-480	Y	4	
47	4011010744	Bolt gb5783-m6*20flznyc-8.8-480	Y	4	
48	25320003492	Forming (pressing, etc.), relay fixing plate	Y	1	
49	4130701488	Tilt switch	Y	1	
50	25320004081	Forming (stamping, etc.), travel switch guard	Y	1	
51	25320000571	Forming (stamping, etc.), plate, protective travel switch	Y	2	
52	4014010131	Screw gb70.1-m5*16flznyc-8.8-480	Y	4	
53	4130000880	Limit switch cls-103	Y	2	
54	25320016601	Plate	Y	1	
55	4014010132	Screw gb70.1-m6*20flznyc-8.8-480	Y	2	
56	25320005421	Cable	Y	1	
57	4130000866	Buzzer xb2bsbc	Y	1	
58	4130000723	Key switch (key code 4130000723001)	Y	1	
59	4011010706	Bolt gb5783-m10*40flznyc-8.8-480	Y	2	
60	4015010279	Washer gb97.1-10flznyc-480	Y	2	
61	25320006571	Pipe clamp, fixing harness	Y	2	
62	25320008111	Pressure plate, fixing harness	Y	1	
63	27340100341	Pipe clamp ϕ 13	N	4	
64	25320002461	Conductive strip	Y	1	
65	25320003152	Power cable p35*500, dc battery switch	Y	1	
66	25320000672	Power cord p35*290 , battery-to-battery connection	Y	1	

Chassis electric systems

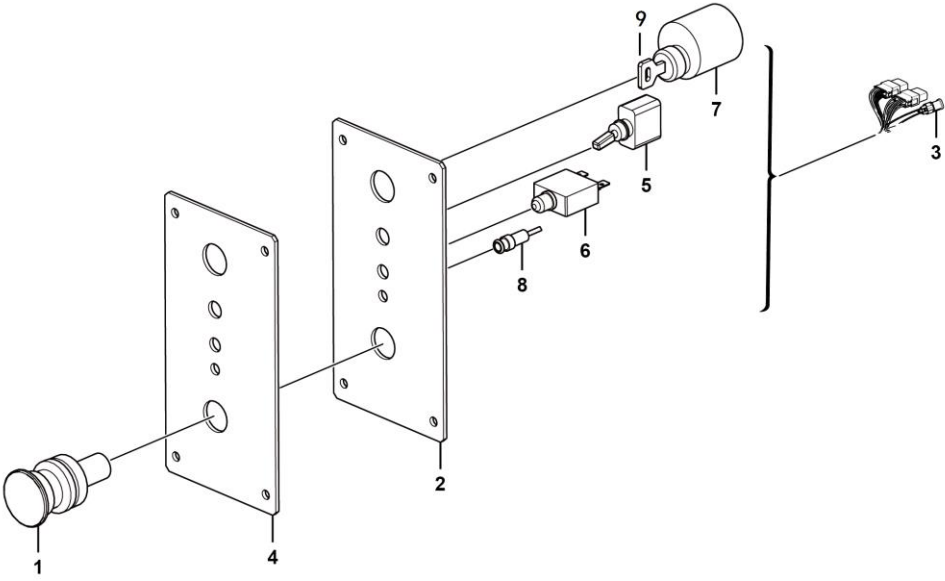


Key	Part No.	Description	Spare parts Y/N	Qty	Remarks
67	4130000836	Fuse 0298300 from littelfuse	Y	1	
68	4130000956	Fuse holder 02981001zxt	Y	1	
69	4014010133	Screw gb818-m4*16flznyc-4.8-480	Y	2	
70	25320003183	Power cord p35*630, motor controller-main contactor	Y	1	
71	25320003193	Power cable p35*760, mcu-motor	Y	1	
72	25320014012	Power cord p35*300, motor controller-main contactor	Y	1	
73	4130702085	Main contactor-24v	Y	1	
74	4011010747	Bolt gb5783-m6*16flznyc-8.8-480	Y	2	
75	4013010293	Nut gb6170-m6flznyc-8-480	Y	2	
76	4130000722	Relay	Y	1	
77	4130702007	Delay relay	Y	1	
78	4014010134	Screw gb818-m4*12flznyc-4.8-480	Y	3	
79	4130702486	Drive motor assembly 0.4kw	Y	2	
80	4011010708	Bolt gb5783-m8*30flznyc-8.8-480	Y	12	
81	4015010280	Washer gb97.1-8flznyc-480	Y	12	

Drive motor



Lower control panel

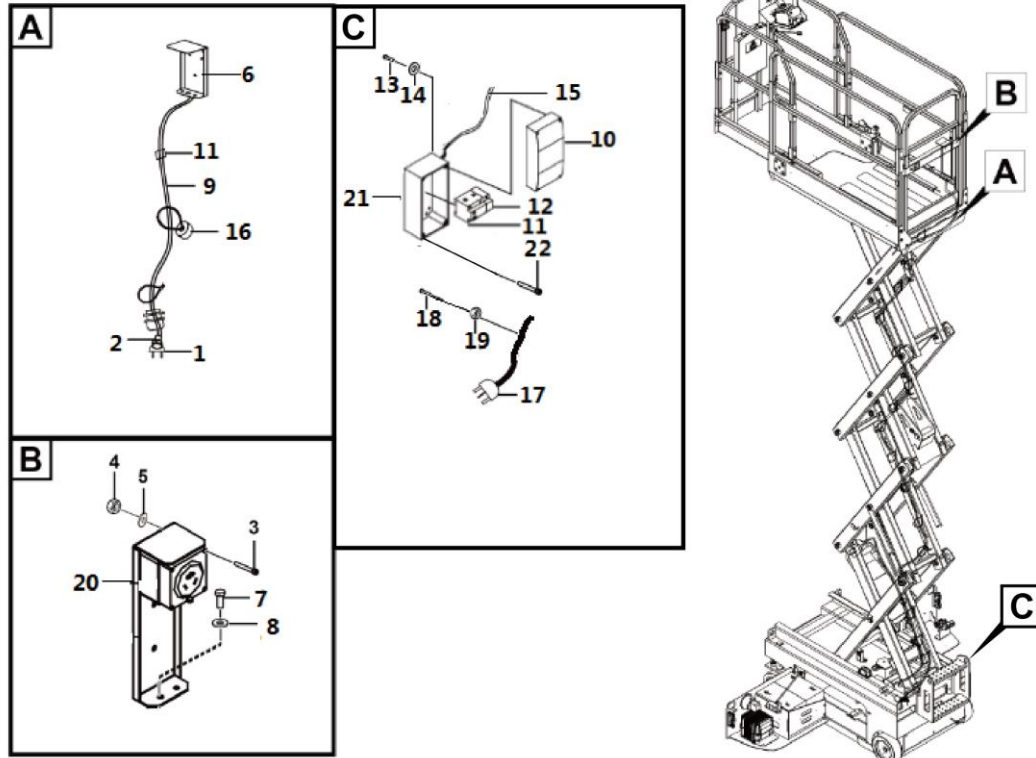


M3101-4130001288

Key	Part No.	Description	Spare parts Y/N	Qty	Remarks
1	4130001280	Emergency stop switch	Y	1	
2	4130000889	Panel	Y	1	
3	4130000795	Ground control panel harness	Y	1	
4	4130000941	Decal	Y	1	
5	4130000720	Toggle switch	Y	1	
6	4130000721	7a self-reset fuse	Y	1	
7	4130000723	Key switch (key code 4130000723001)	Y	1	
8	4130000773	Overload indicator	Y	1	
9	4130000723001	Key assembly 89943-29	Y	1	



Electricity assembl



M3200-2533000679.S1B

Key	Part No.	Description	Spare parts Y/N	Qty	Remarks
1	4130702374	Device plug	Y	1	
2	4019010267	Waterproof fitting 467315-m25	Y	4	
3	4014010450	Screw gb818-m6*25flznyc-4.8	Y	4	
4	4013010299	Nut gb889.1-m6flznyc-8	Y	7	
5	4015010284	Washer gb97.1-6flznyc-480	Y	4	
6	25330006741	Ac plate	Y	1	
7	4011010746	Bolt gb5783-m8*12flznyc-8.8-480	Y	2	
8	4015010280	Washer gb97.1-8flznyc-480	Y	2	
9	25330006961	Wire	Y	1	
10	4130701803	Fuse box56cb1-4n	Y	1	
11	4130701801	Circuit breaker ic65n	Y	1	
12	4130701802	Residual current action protection accessoryvigiic65	Y	1	
13	4014010131	Screw gb70.1-m5*16flznyc-8.8-480	Y	4	
14	4015010283	Washer gb97.1-5flznyc-480	Y	8	
15	25330007001	Wire	Y	1	
16	27340100341	Pipe clamp ϕ 13	N	2	
17	4130702352	Plug	Y	1	
18	4014010128	Screw gb70.1-m5*25flznyc-8.8-480	Y	4	
19	4013010305	Nut gb889.1-m5flznyc-8-480	Y	4	
20	25340018031	Label - warning, power to platform	N	1	
21	25330009711	Plate welding	Y	1	
22	4014010132	Screw gb70.1-m6*20flznyc-8.8-480	Y	3	

