

AS1413E AERIAL WORK PLATFORM PARTS CATALOG



LINGONG GROUP JINAN HEAVY MACHINERY CO., LTD.

Spare parts and services

For the owner of the machines of LGMG, only the spare parts and services of LGMG can make your machine to better maintain the original features.

Only LGMG is able to provide you with the perfect match of pure quality spare parts for your machine and knowledge of professional maintenance staff. Only in this way it can ensure sustainable high productivity and longer service life.

AS1413E AERIAL WORK PLATFORM PARTS CATALOG

2014-11 Version 1 Printed 1

LINGONG GROUP JINAN HEAVY MACHINERY CO., LTD.

Add: Zhongrun Century Square, No. 13777, Jingshi Road, Lixia, Jinan, Shandong, P.R. China

Tel: 86-0531-81663345

Fax: 86-0531-81666853

Web: WWW.LGMG.COM.CN

FOREWORD

This parts catalog of AS1413E aerial work platform is made for the convenience of users to use, repair and maintain the machine, which can be referred in the process of using. It can also help the users to be familiar with the structure and assembly relation of the machine. Parts of the engine are showed in details in its structure handbook, which are no longer contained in the catalog.

The catalog identifies drawings and assembly relations of different parts according to the system. Components which can not be taken apart, such as welding parts or riveted assemblies, are marked only by their code without the list of their consisting parts. The list in the catalog is arranged in Chinese and English.

This catalog is based on the AS1413E standard product, which can be a reference for the other nonstandard products, for more information, please consult LGMG, the local dealer or LinGong website. With the advancement of technology, we will keep on improving the product, so some content in the catalog may be inconsistent with the future products, which will not notice the users. When ordering the spare parts, please be kindly inform us the manufacturing date and serial number of the machine.

THE COMPILER
2013.6

CONTENTS

B. Axle system	BoM Reference	Page
Front axle assembly	B0400-2504000002.S1B	8
Rear axle assembly	B0500-2505000240.S1B-G1	10

D. Chassis system	BoM Reference	Page
Chassis assembly	D0700-2516002315.S1A	14
Battery and oil box side	D1800-2518002136.S1A	16
Oil box side	D0802-2518001990.S	18
Battery box side	D1800-2518002135.S1A	22
Hollow protect system	D0900-2519000272.S	24
Left hollow protect	D0900-2519000270.S1B	26
Pressing shaft assembly	D0900-2519000316.S	30
Fastening assembly	D1900-2519000340.S1A	32
Right hollow protect	D0901-2519000271.S1B	34

F. Steering system	BoM Reference	Page
Steering arm	F1200-2517000332.S1D	40

G. Scissor assy installation assembly	BoM Reference	Page
Scissor assy installation	G1300-2520003432.S1D	44
Protective arm	G1300-2520000044.B3C	50
Plate assembly	G1300-2520000186.B2A	52

Plate assembly	G1300-2520002513.S	54
Plate, safety arm	G1300-2520002512.S	56
Plate assembly	G1300-2520002514.S	58
Plate assembly	G1300-2520002517.S	60
Plate assembly	G1300-2520002530.S	62
Fork frame assembly	G1300-2520003431.S1A	64
Inner arm	G1300-2520003221.S	66
Inner arm	G1300-2520003231.S	68
Left outer arm	G2000-2520003233.S1A	70
Right outer arm	G2000-2520003236.S1A	72
Inner arm	G1300-2520003238.S	74
Inner arm	G1300-2520003243.S	76
Inner arm	G1300-2520003245.S	78
Inner arm	G1300-2520003250.S	80
Outer arm	G2000-2520003251.S1A	82

H. Swing system

	BoM Reference	Page
Balance	H1600-2528000243.S	86

I. Cover accessory

	BoM Reference	Page
Cover assembly	I1700-2529000278.S2D	90

K. Platform assembly	BoM Reference	Page
Platform	K2100-2521006043.S1A	94
Bracket	K2106-2521002803.S	96
Rotating door	K2100-2521003865.S	98
Main platform	K2100-2521004769.S	100
Roller assembly	K2100-2521003593.S2A	102
Extension platform assembly	K2100-2521004773.S1B	104
Folding guardrail	K2103-2521004781.S	106

L. Hydraulic system	BoM Reference	Page
Drive hydraulic assembly	L2300-2507000531.S1B1	110
Filter	L2300-4120001128	114
Main valve st5158-ae00	L2300-4120704774	116
Steering cylinder	L2300-4120704747	118
Gear pump a101098620	L2300-4120001488	120
Lifting hydraulic assembly	L2400-2508000462.S1D-G2	122
Lifting cylinder	L2400-4120704503	126
Cylinder valve block assembly st4846-ac0a	L2402-4120703742	128
Upper cylinder valve block assembly st4960-ac00	L2401-4120704028	130
Lifting cylinder	L2400-4120704504	132
Cable assembly	L2400-2508000615.S	134
Pump	L2300-4130702573	136

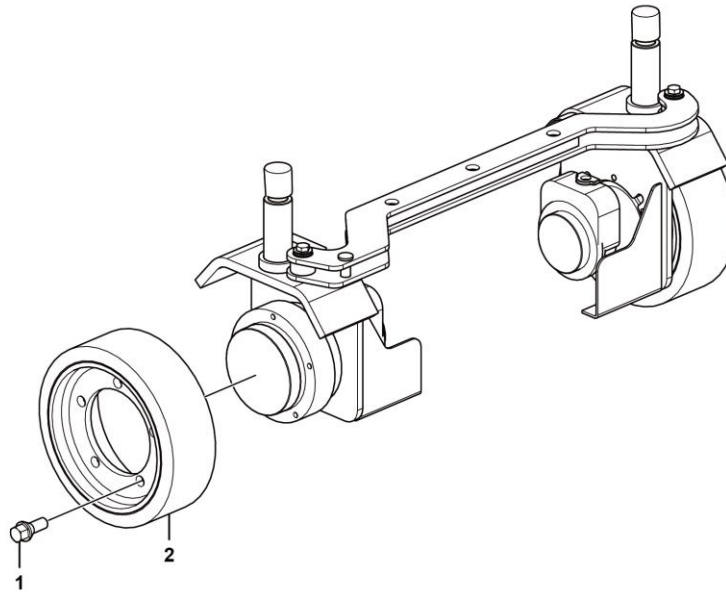
M. Electric system	BoM Reference	Page
Electrical assembly	M2900-2530000751.S1D	140
Pcu	M3100-4130702429-G1	142
Chassis electric systems	M3200-2532002392.S1C	144
Ground control unit	M3200-2532002470.S1A	154
Electric assembly	M3300-2533001138.S1B	156

B
AXLE SYSTEM

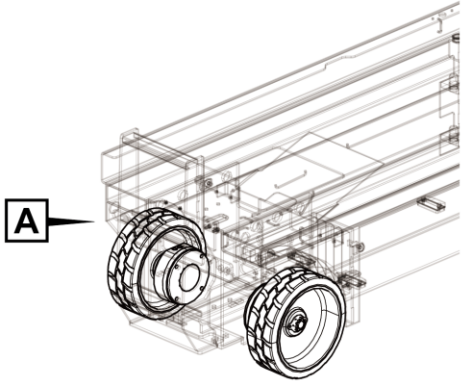
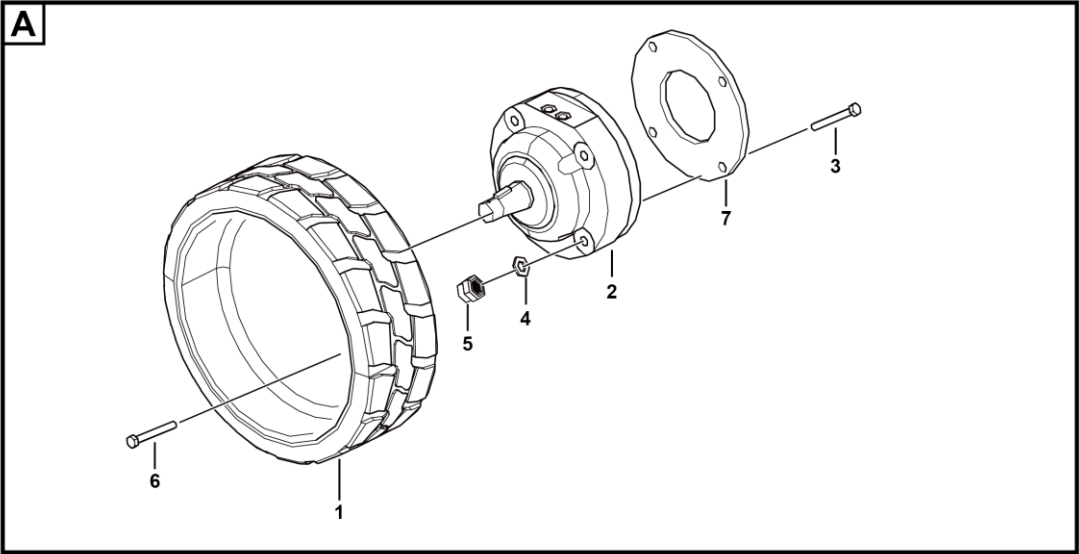


LINGONG GROUP JINAN HEAVY MACHINERY CO., LTD.

Front axle assembly



Rear axle assembly

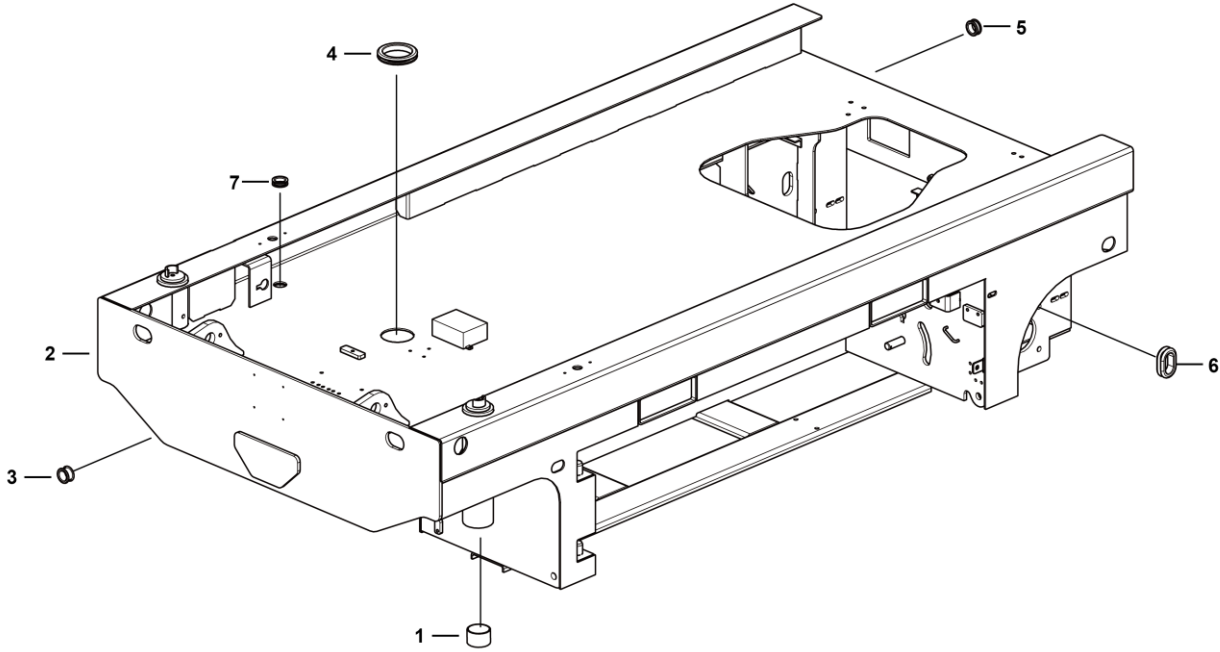


D
CHASSIS SYSTEM

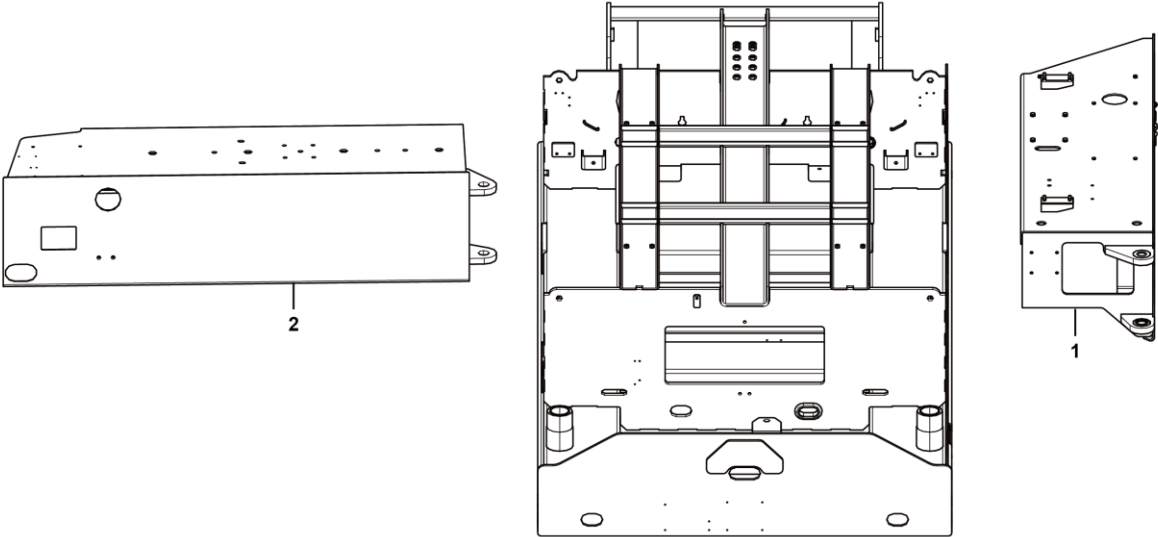


LINGONG GROUP JINAN HEAVY MACHINERY CO., LTD.

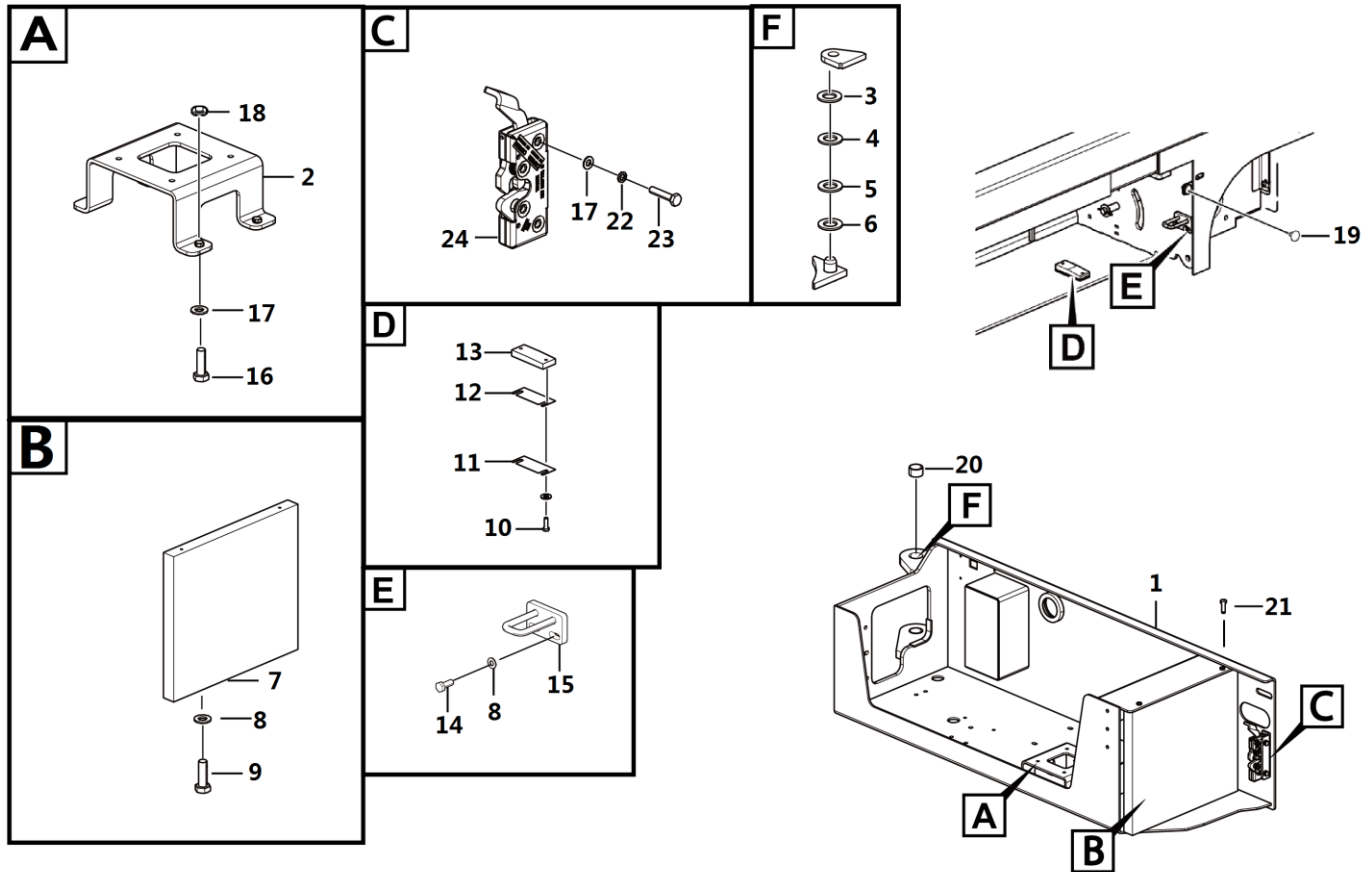
Chassis assembly



Battery and oil box side

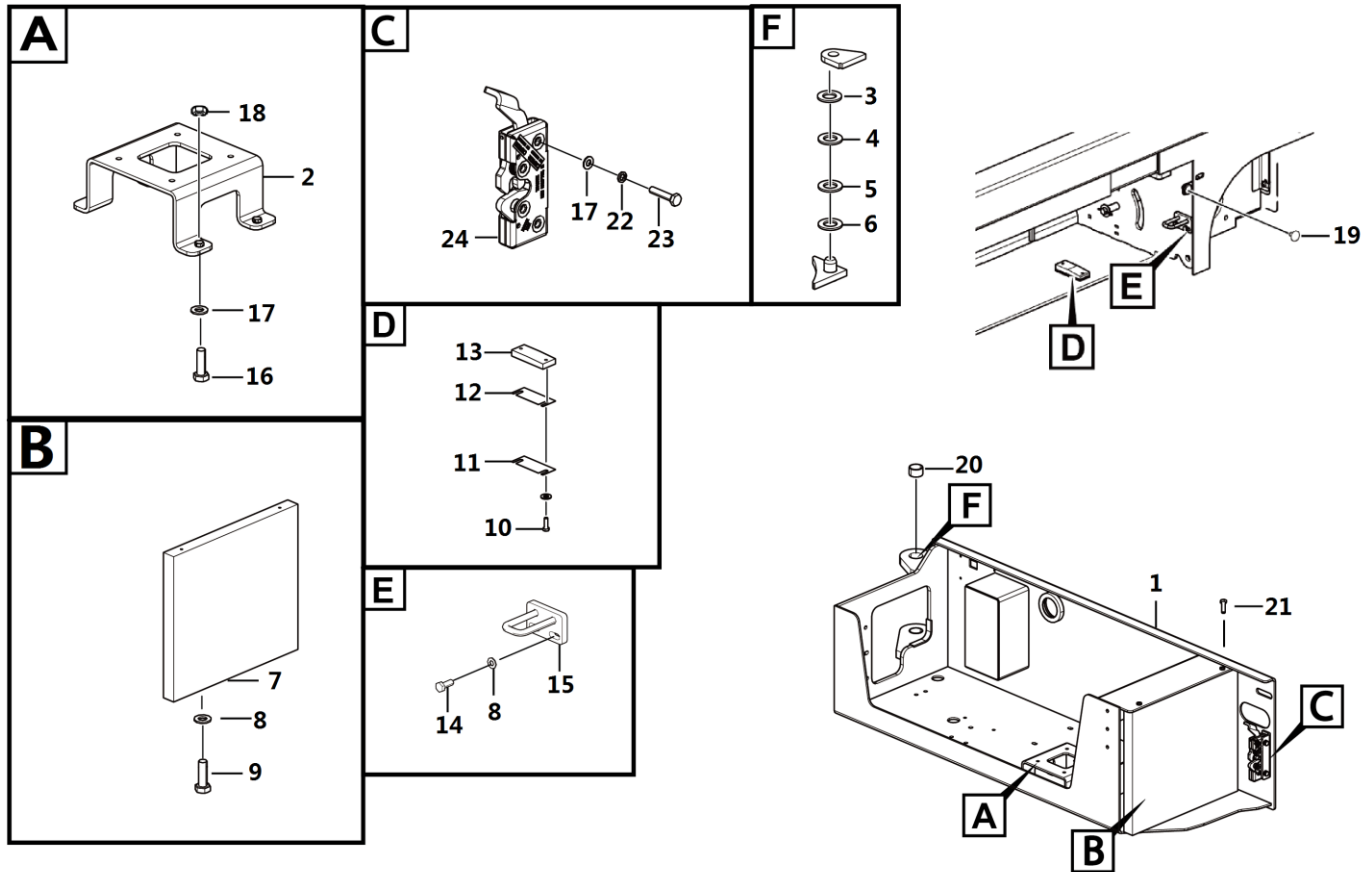


Oil box side

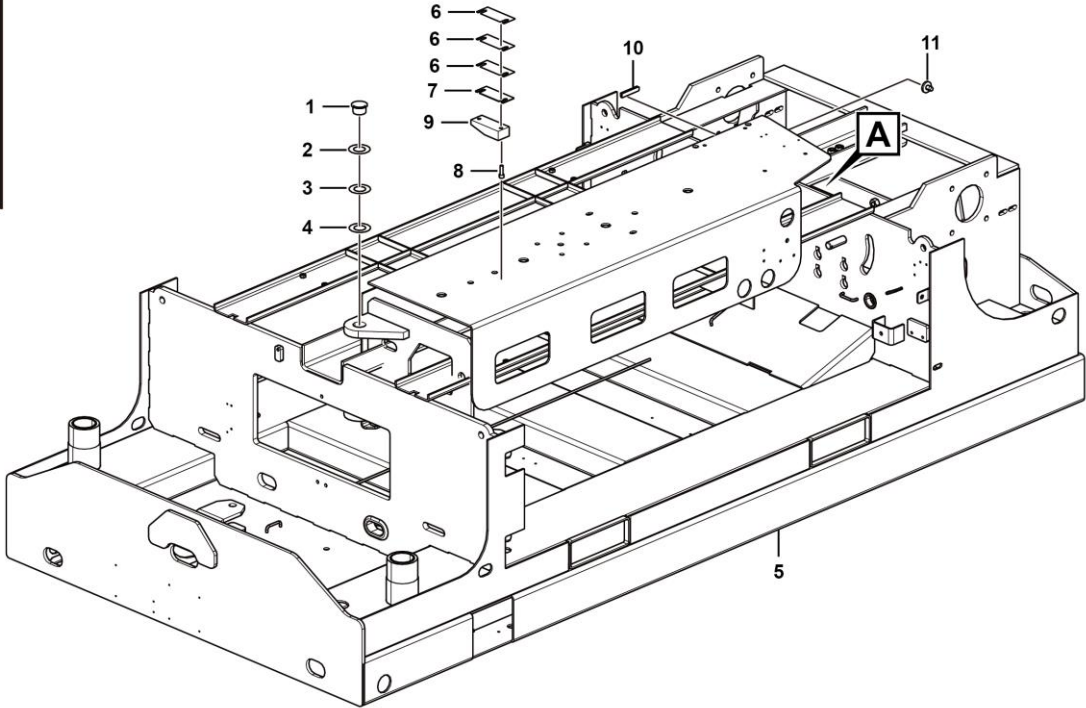
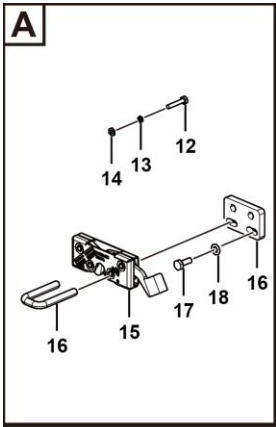


Key	Part No.	Description	Spare parts Y/N	Qty	Remarks
1	25180019892	Oil box side weld	Y	1	
2	25180018951	Plat	Y	1	
3	25180001452	Washer 0.5	Y	2	
4	25180001462	Washer 0.2	Y	2	
5	25180001472	Washer0.1	Y	2	
6	4190703911	Washer	Y	2	
7	25180005701	Plate	Y	1	
8	4015010280	Washer gb97.1-8flznyc-480	Y	6	
9	4011010743	Bolt gb5783-m8*25flznyc-8.8-480	Y	4	
10	4011010908	Screw gb70.1-m8*25flznyc-8.8-480	Y	4	
11	25160000611	Shim,100*40*4.5*2	Y	2	
12	25160000572	Shim,100*40*4.5*1	Y	6	
13	25160002421	Block	Y	2	
14	4011010711	Bolt gb5783-m8*20flznyc-8.8-480	Y	2	
15	25160004253	Weldment, lock retainer, chassis	Y	1	
16	4011010744	Bolt gb5783-m6*20flznyc-8.8-480	Y	2	
17	4015010284	Washer gb97.1-6flznyc-480	Y	4	
18	4013010303	Reed nut qc339-m6flznyc-8-480	Y	4	
19	25200000402	Rubber plug,14*11	Y	1	
20	4190703910	Bearing	Y	2	
21	4014010338	Screw gb70.3-m6*20flznyc-8.8-480	Y	2	
22	4015010375	Washer gb93-6-65mn flznyc	Y	2	

Oil box side

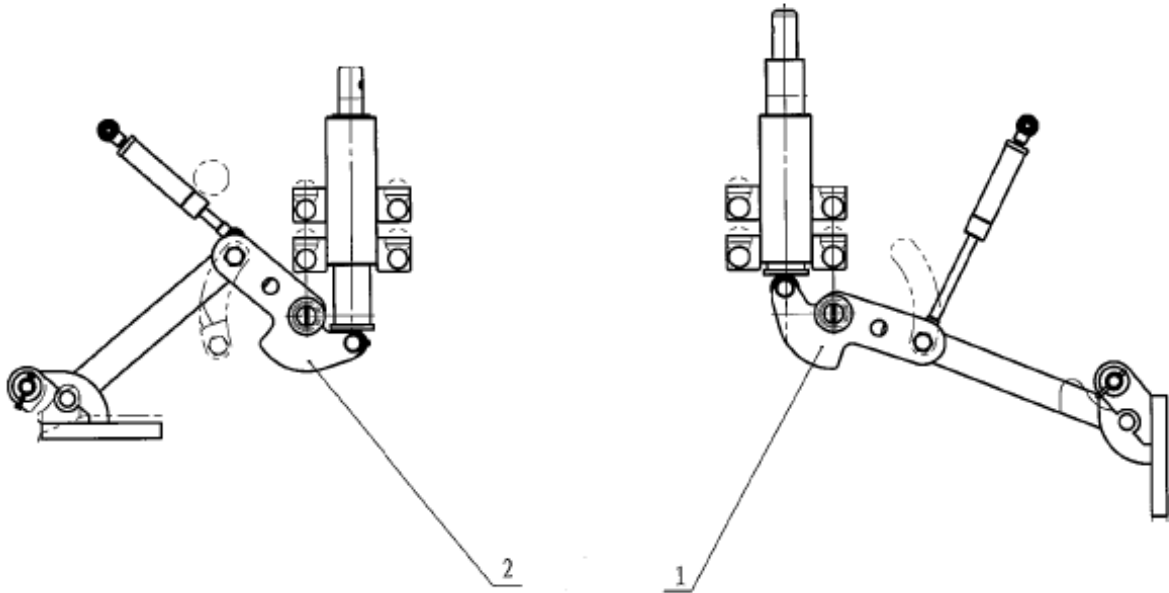


Battery box side

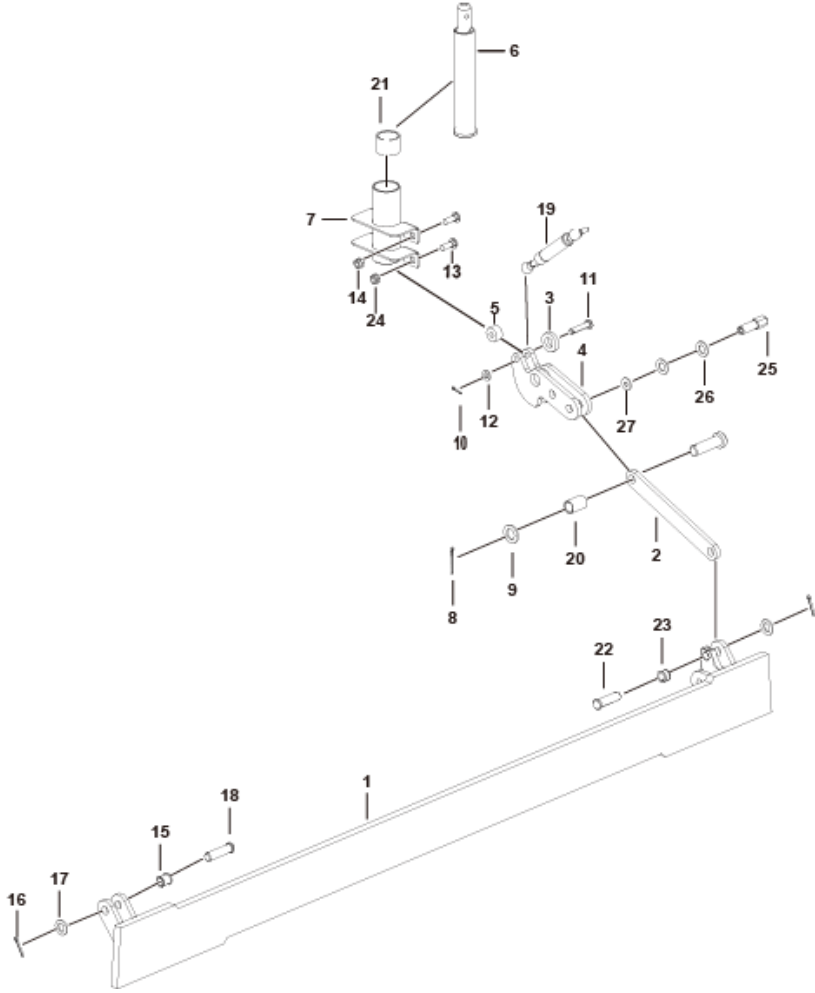


Key	Part No.	Description	Spare parts Y/N	Qty	Remarks
1	4190706939	Bushing	Y	2	
2	25180001472	Washer0.1	Y	2	
3	25180001462	Washer 0.2	Y	2	
4	25180001452	Washer 0.5	Y	2	
5	25180021342	Battery box	Y	1	
6	25160000572	Shim,100*40*4.5*1	Y	6	
7	25160000611	Shim,100*40*4.5*2	Y	2	
8	4011010908	Screw gb70.1-m8*25flznyc-8.8-480	Y	4	
9	25160002421	Block	Y	2	
10	4190706935	Clip rubber bar	Y	1	
11	25200000402	Rubber plug,14*11	Y	1	
12	4011010717	Bolt gb5783-m6*30flznyc-8.8-480	Y	2	
13	4015010284	Washer gb97.1-6flznyc-480	Y	2	
14	4015010375	Washer gb93-6-65mn flznyc	Y	2	
15	4190002250	Right side lock (trimark 50076), battery box side body	Y	1	
16	25160004253	Weldment, lock retainer, chassis	Y	1	
17	4011010711	Bolt gb5783-m8*20flznyc-8.8-480	Y	2	
18	4015010280	Washer gb97.1-8flznyc-480	Y	2	

Hollow protect system



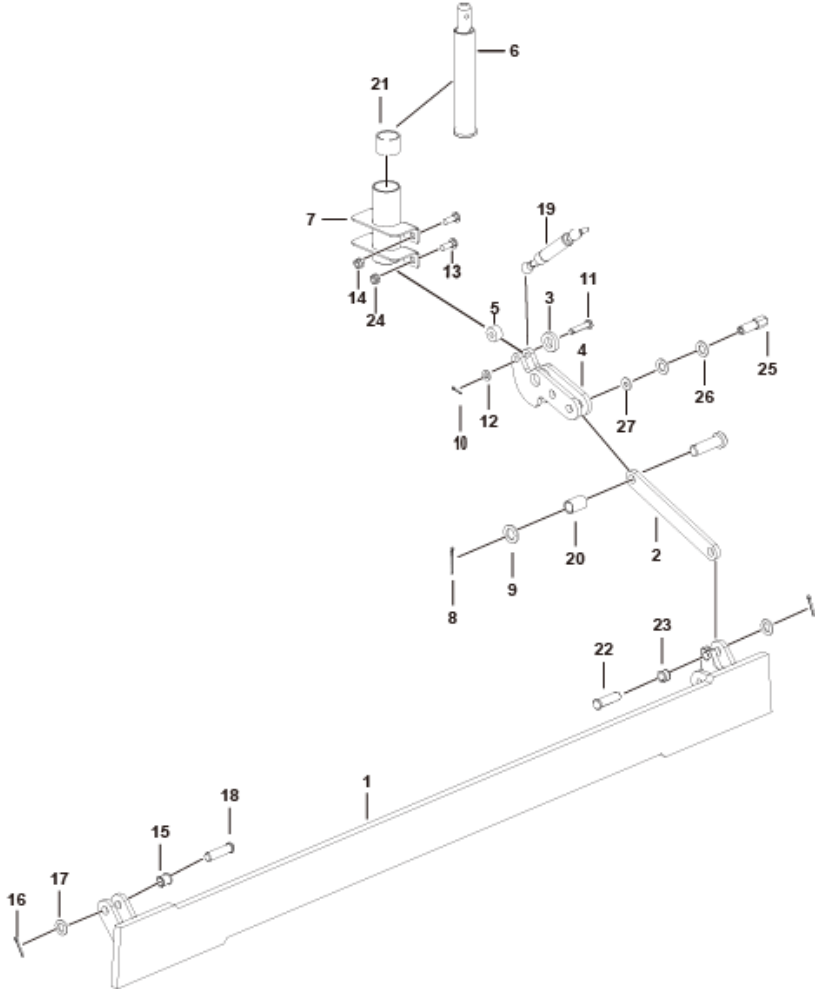
Left hollow protect



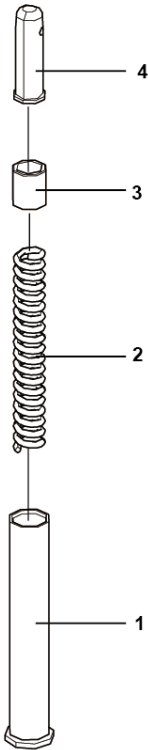
Key	Part No.	Description	Spare parts Y/N	Qty	Remarks
1	25190002684	Left protect plate	Y	1	
2	25190000091	Linkage, pithole protection mechanism	Y	1	
3	25190000201	Spacer, 38*20*8	Y	1	
4	25190000721	Connecting rod assembly	Y	1	
5	25190000221	Roller, 28*10*15	Y	1	
6	25190003161	Pressing shaft assembly	N	1	
7	25190003401	Fastening assembly	Y	1	
8	4016010136	Cotter pin gb91-4*45flznyc-480-q235a	Y	1	
9	4015010338	Washer gb97.1-20flznyc-300hv-480	Y	1	
10	4016010138	Cotter pin gb91-3.2*26flznyc-480-q235a	Y	1	
11	25190000231	Pin10, 10*46	Y	1	
12	4015010339	Washer gb97.1-10flznyc-300hv-480	Y	1	
13	4011011165	Bolt gb14-m10*35flznyc-8.8-480	Y	4	
14	4013010296	Nut gb889.1-m10flznyc-8	Y	4	
15	25190000991	Bushing	Y	1	
16	4016010137	Cotter pin gb91-4*28flznyc-480-q235a	Y	3	
17	4015010342	Washer gb97.1-16flznyc-300hv-480	Y	3	
18	25190000981	Pin	Y	1	
19	25190000212	Gas spring,10/22-80-245 (o-o) 400	Y	1	
20	25190000181	Shaft sleeve20, 25*20*37	Y	1	
21	25200000141	Shaft sleeve,45*38*32	Y	2	
22	25190000242	Pin16, 16*54	Y	2	



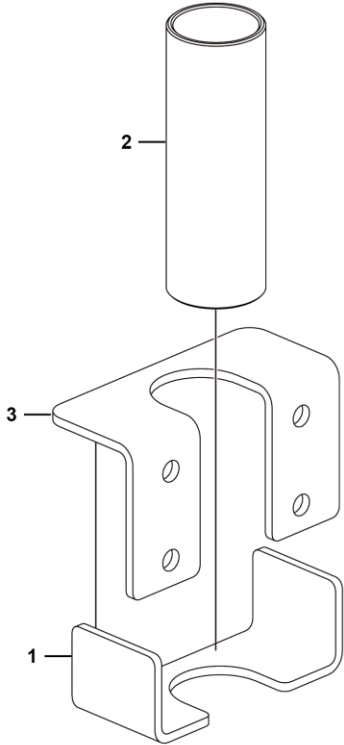
Left hollow protect



Pressing shaft assembly

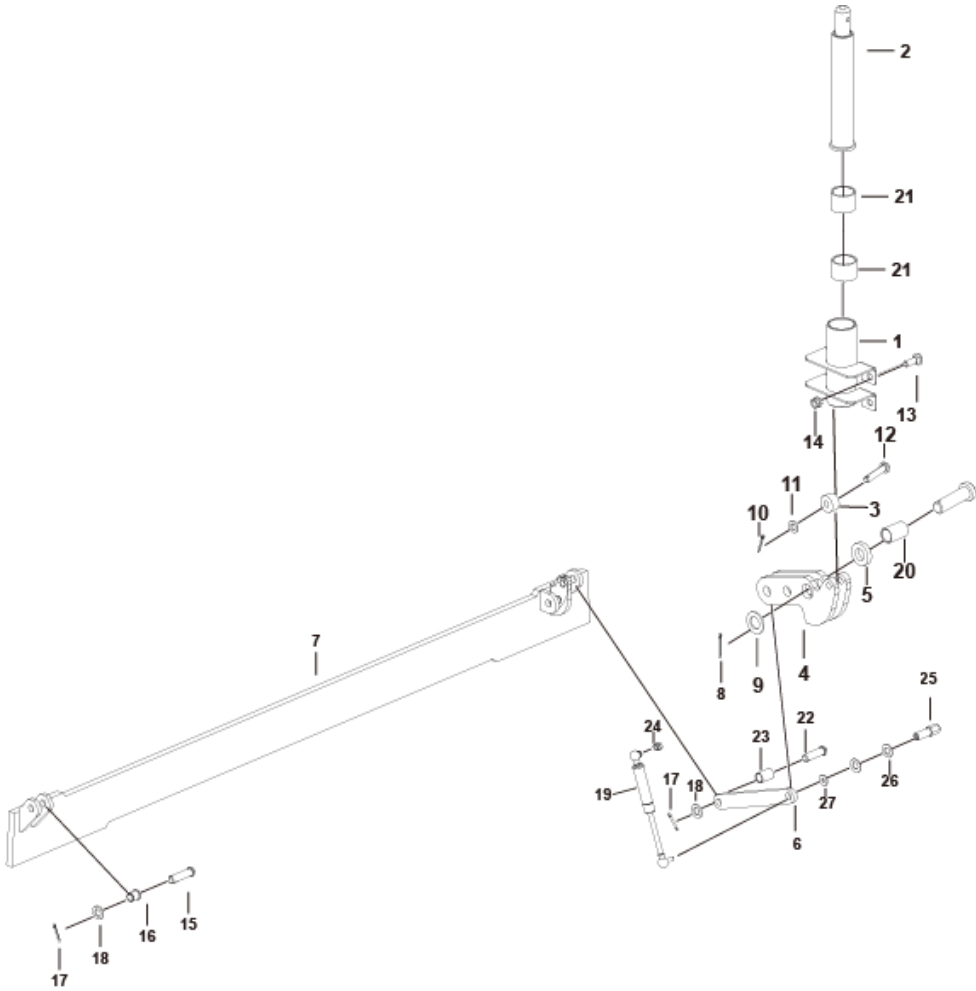


Fastening assembly



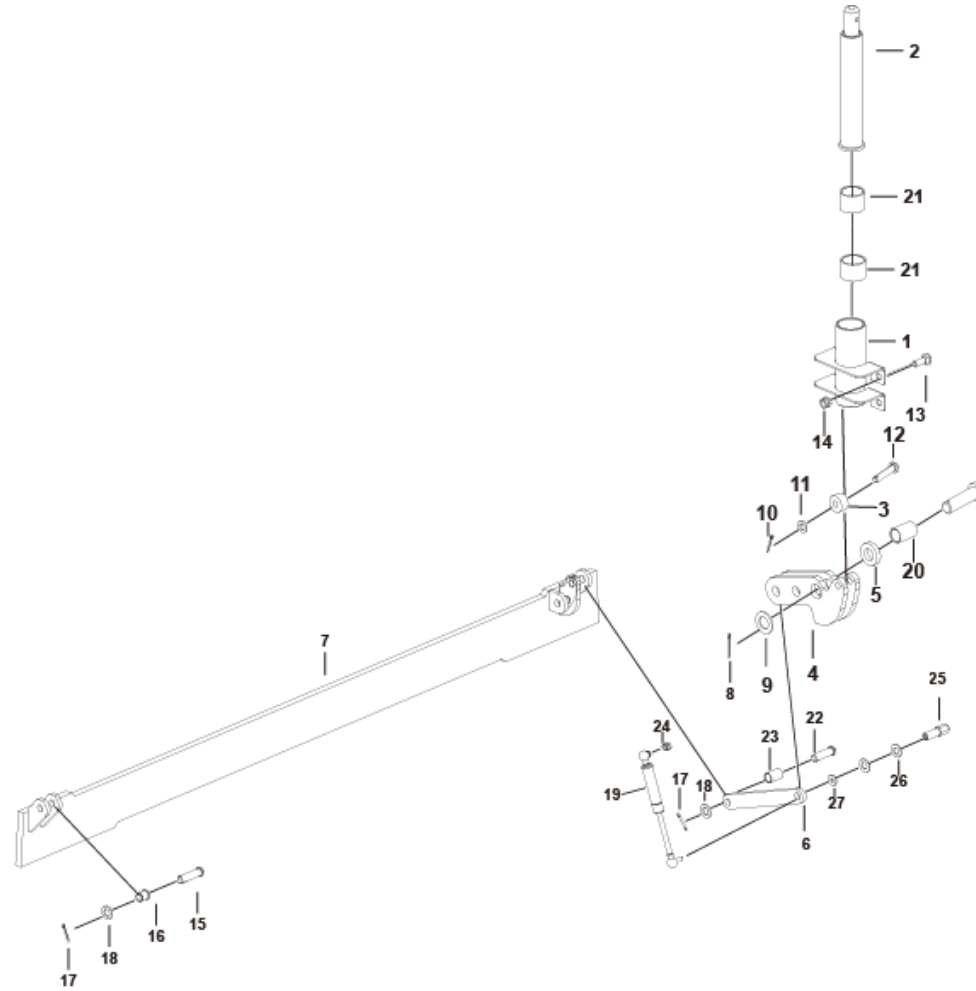


Right hollow protect



Key	Part No.	Description	Spare parts Y/N	Qty	Remarks
1	25190003401	Fastening assembly	Y	1	
2	25190003161	Pressing shaft assembly	N	1	
3	25190000221	Roller, 28*10*15	Y	1	
4	25190000721	Connecting rod assembly	Y	1	
5	25190000201	Spacer, 38*20*8	Y	1	
6	25190000091	Linkage, pithole protection mechanism	Y	1	
7	25190002694	Right protect plate	Y	1	
8	4016010136	Cotter pin gb91-4*45flznyc-480-q235a	Y	1	
9	4015010338	Washer gb97.1-20flznyc-300hv-480	Y	1	
10	4016010138	Cotter pin gb91-3.2*26flznyc-480-q235a	Y	1	
11	4015010339	Washer gb97.1-10flznyc-300hv-480	Y	1	
12	25190000231	Pin10, 10*46	Y	1	
13	4011011165	Bolt gb14-m10*35flznyc-8.8-480	Y	4	
14	4013010296	Nut gb889.1-m10flznyc-8	Y	4	
15	25190000981	Pin	Y	1	
16	25190000991	Bushing	Y	1	
17	4016010137	Cotter pin gb91-4*28flznyc-480-q235a	Y	3	
18	4015010342	Washer gb97.1-16flznyc-300hv-480	Y	3	
19	25190000212	Gas spring,10/22-80-245 (o-o) 400	Y	1	
20	25190000181	Shaft sleeve20, 25*20*37	Y	1	
21	25200000141	Shaft sleeve,45*38*32	Y	2	
22	25190000242	Pin16, 16*54	Y	2	

Right hollow protect

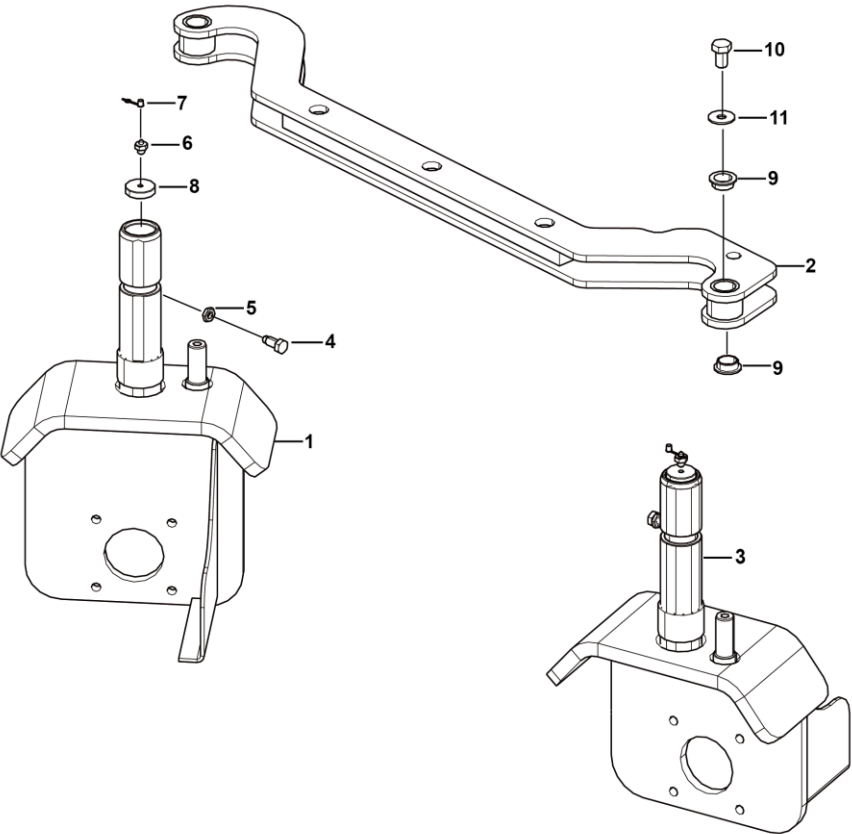


F
STEERING SYSTEM



LINGONG GROUP JINAN HEAVY MACHINERY CO., LTD.

Steering arm



F1200-2517000332.S1c

Key	Part No.	Description	Spare parts Y/N	Qty	Remarks
1	25170005901	Left spindle	Y	1	
2	25170004651	Steering plate welding	Y	1	
3	25170005911	Right spindle	Y	1	
4	25160000722	Stop bolt ,m12*27	Y	2	
5	4013010315	Nut gb6172.1-m12flznyc-8-480	Y	2	
6	4030000065	Grease fitting jb7940.1-m10*1	Y	2	
7	4030000107	Oil bowl dust cap jxhf-00006	Y	2	
8	25170001431	Plate	Y	2	
9	25170000151	Bushing, 30*10	Y	4	
10	4011011014	Bolt gb5786-m12*1.5*25flznyc-12.9-480	Y	2	
11	4015010286	Washer gb96.1-12flznyc-480	Y	2	

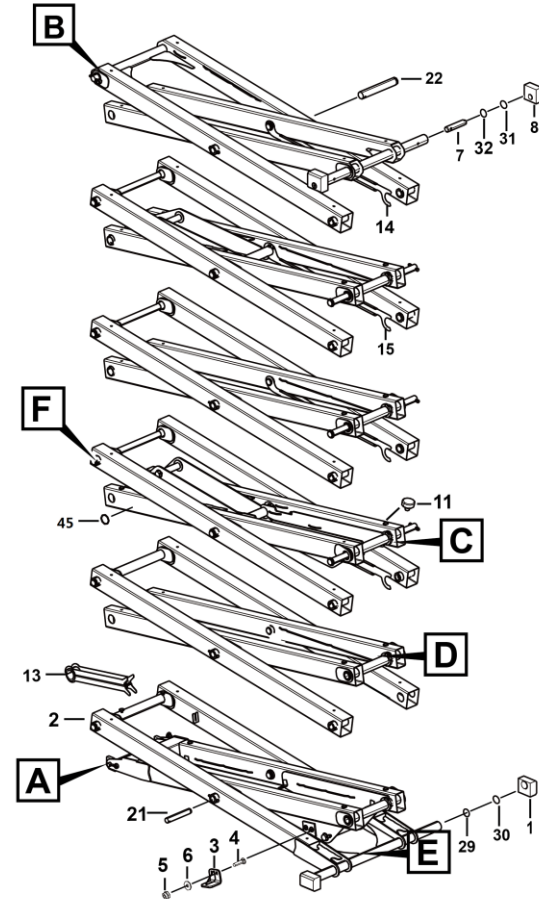
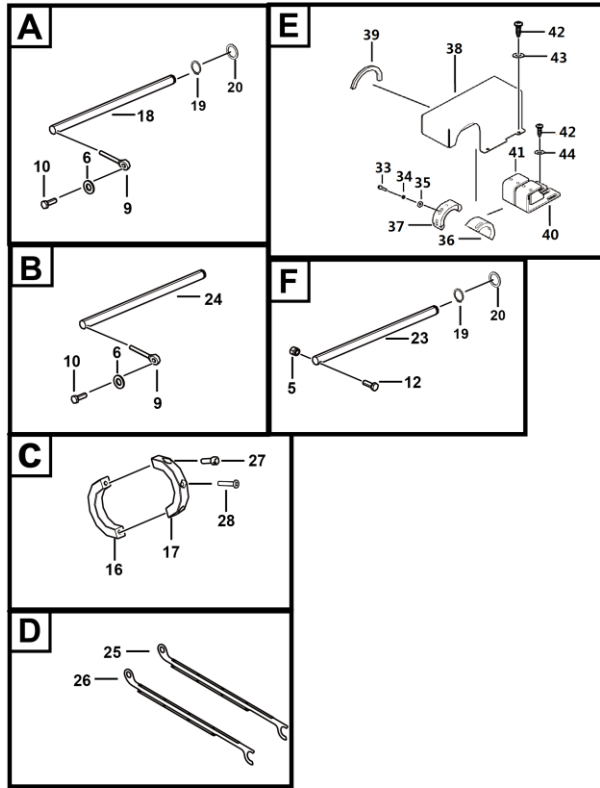


G
SCISSOR ASSY INSTALLATION ASSEMBLY



LINGONG GROUP JINAN HEAVY MACHINERY CO., LTD.

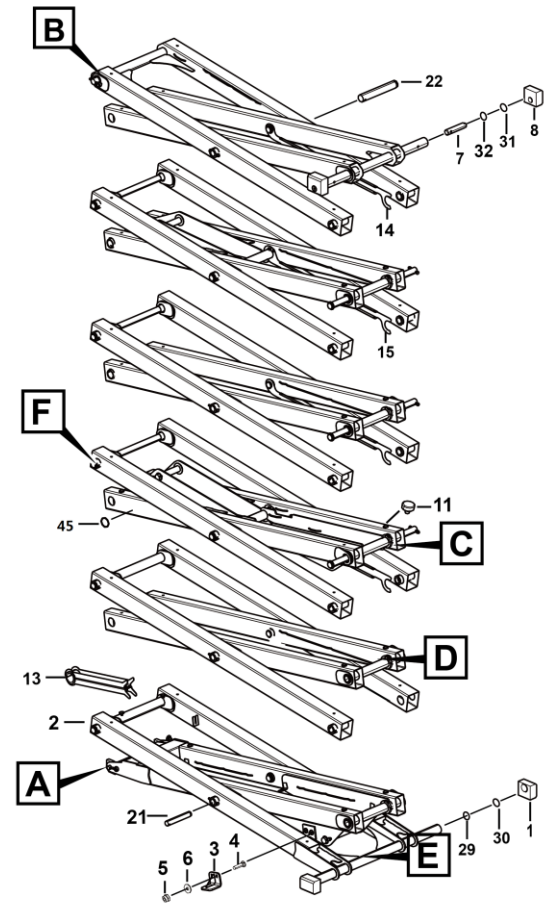
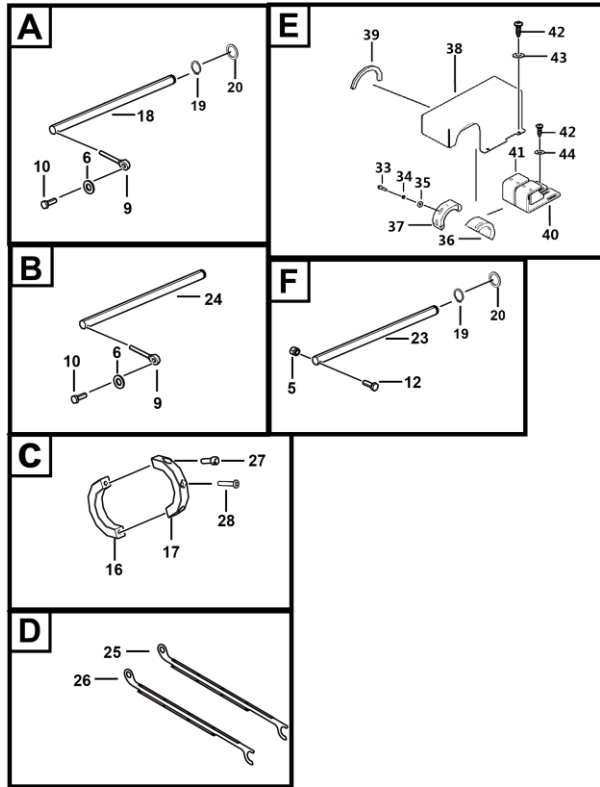
Scissor assy installation



Key	Part No.	Description	Spare parts Y/N	Qty	Remarks
1	25200025451	Block	Y	2	
2	25200034313	Scissor assy installation	Y	1	
3	25200038481	Plate	N	2	
4	4011010706	Bolt gb5783-m10*40flznyc-8.8-480	Y	4	
5	4013010296	Nut gb889.1-m10flznyc-8	Y	30	
6	4015010339	Washer gb97.1-10flznyc-300hv-480	Y	6	
7	25200000601	Axle shaft, 38*180	Y	2	
8	25200007141	Slider	Y	2	
9	25200000641	Pin, 10*70	Y	2	
10	4011010707	Bolt gb5783-m10*30flznyc-8.8-480	Y	2	
11	25200000402	Rubber plug,14*11	Y	40	
12	4011010724	Bolt gb5782-m10*75flznyc-8.8	Y	26	
13	25200000442	Protective arm	N	1	
14	25200025301	Plate assembly	Y	3	
15	25200025132	Plate assembly	Y	2	
16	25200001531	Retaining ring, fixing inner arm	Y	7	
17	25200001541	Retaining ring, fixing inner arm	Y	7	
18	4043010164	Pin	Y	1	
19	4015010269	Check ring jb4342-38flznyc-65mn-480	Y	26	
20	25200000491	Washer 51*38*3	Y	28	
21	4043010165	Pin	Y	8	
22	4043010166	Pin	Y	6	

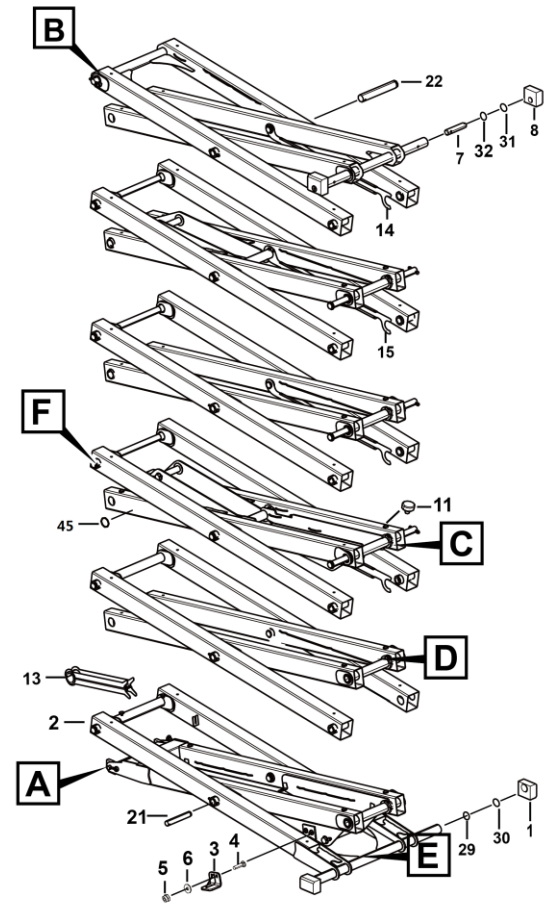
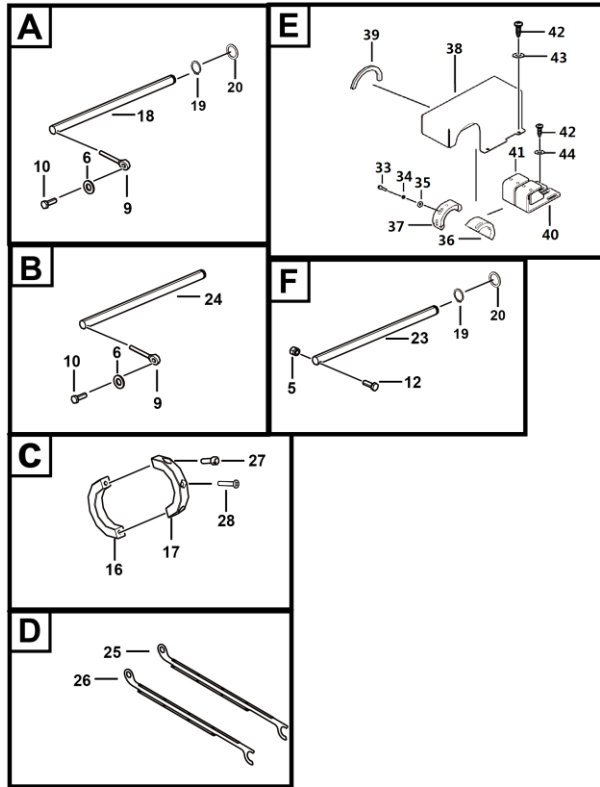
Scissor assy installation assembly

Scissor assy installation



Key	Part No.	Description	Spare parts Y/N	Qty	Remarks
23	25200025282	Pin	Y	10	
24	4043010163	Pin lzb001 b38*901*11	Y	1	
25	25200025142	Plate assembly	Y	1	
26	25200025171	Plate assembly	Y	1	
27	4014010112	Screw gb819.1-m6*20flznyc-4.8	Y	7	
28	4014010128	Screw gb70.1-m5*25flznyc-8.8-480	Y	14	
29	25200009931	Plate, for adjusting the gap between slider and track	Y	2	
30	25200009921	Plate, for adjusting the gap between slider and track	Y	2	
31	25200002761	Washer,51*38*2	Y	2	
32	25200002751	Washer 106013-038	Y	2	
33	4014010122	Screw gb70.1-m5*20flznyc-8.8-480	Y	6	
34	4015010560	Washer gb93-5flznyc-65mn-480	Y	6	
35	4015010345	Washer gb96.1-5flznyc-480	Y	6	
36	25200036681	Block	Y	1	
37	25200036561	Block	Y	2	
38	25320015381	Plat	Y	1	
39	4190707135	Clip rubber bar	Y	2	
40	25200036461	Plate	Y	2	
41	25200036691	Plate	Y	1	
42	4014010132	Screw gb70.1-m6*20flznyc-8.8-480	Y	10	
43	4015010284	Washer gb97.1-6flznyc-480	Y	4	
44	4015010296	Washer gb96.1-6flznyc-480	Y	6	

Scissor assy installation



Protective arm

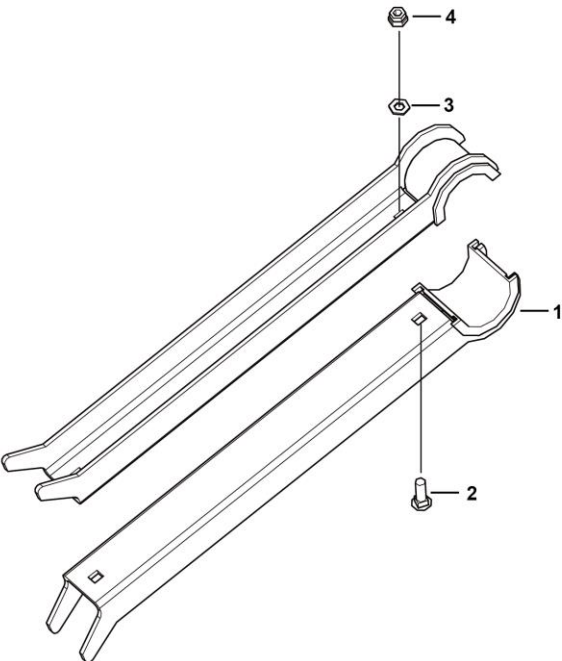
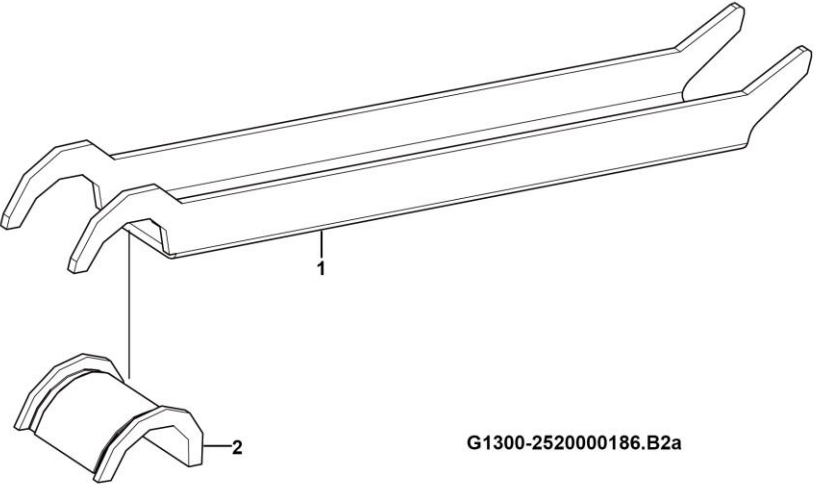
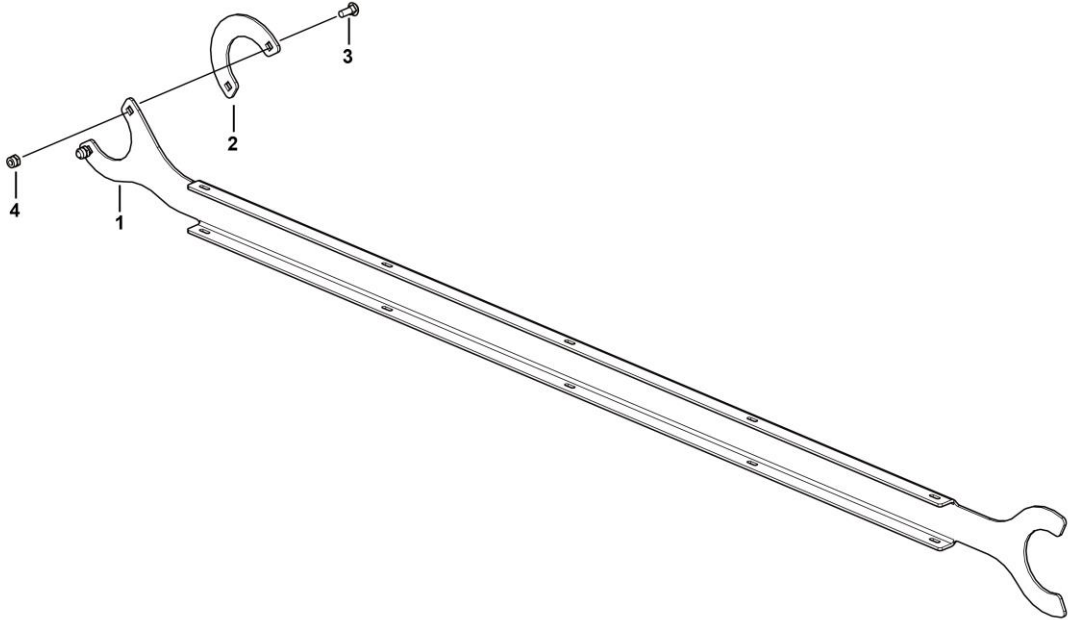


Plate assembly



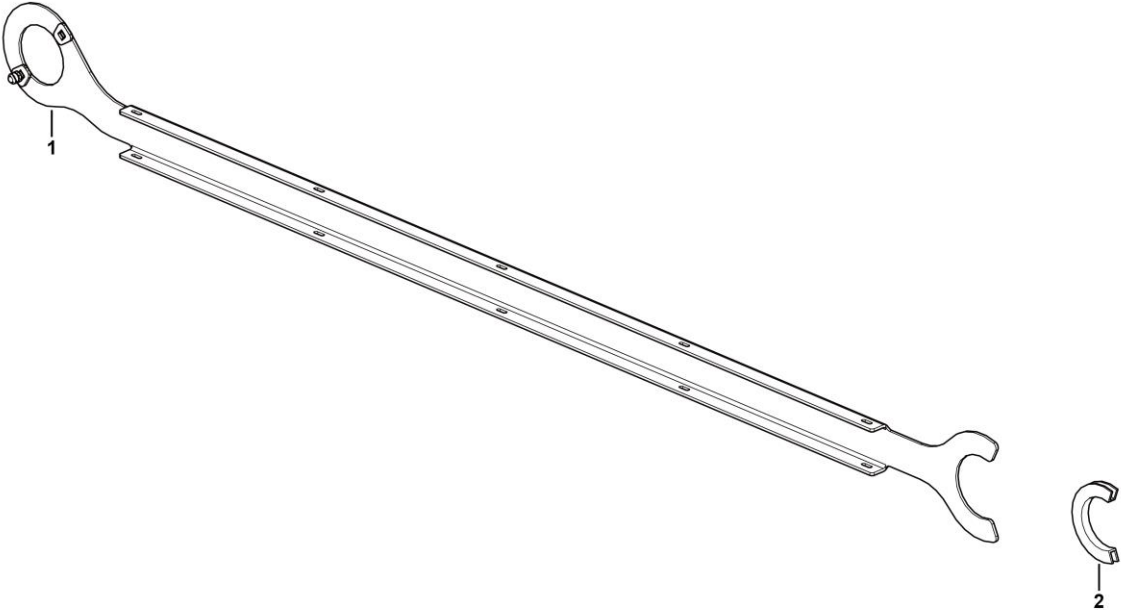
G1300-2520000186.B2a

Plate assembly



G1300-2520002513.S

Plate, safety arm



G1300-2520002512.S



Plate assembly

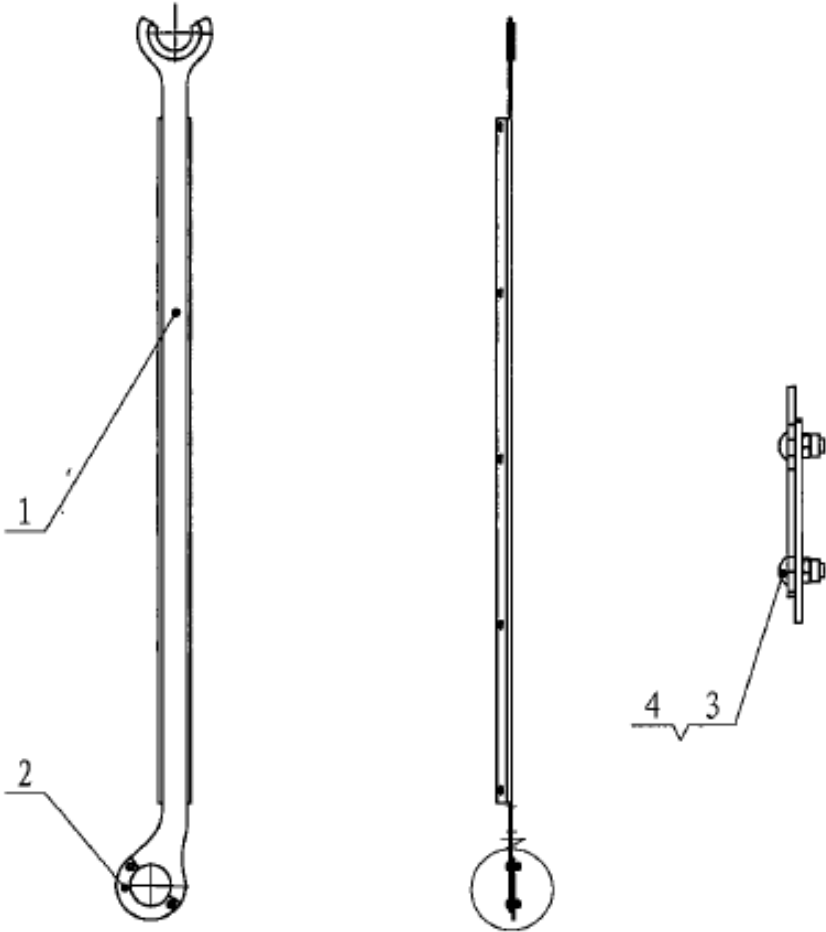


Plate assembly

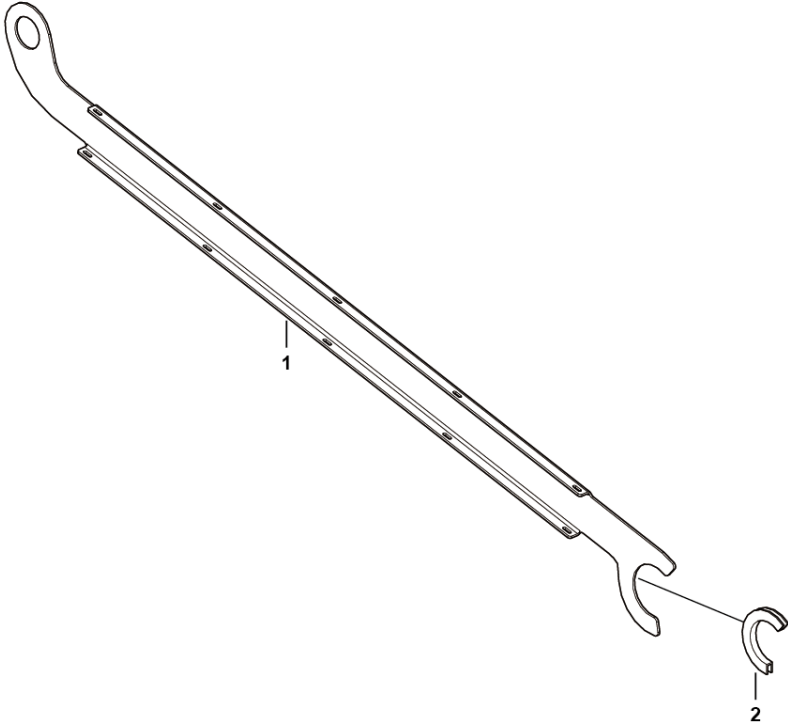
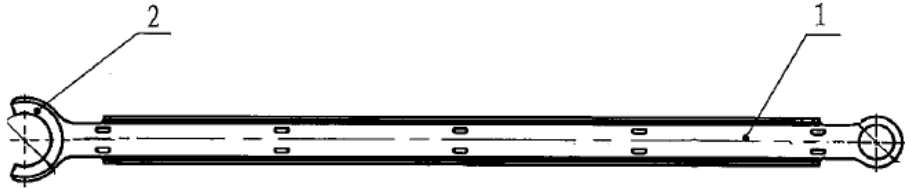
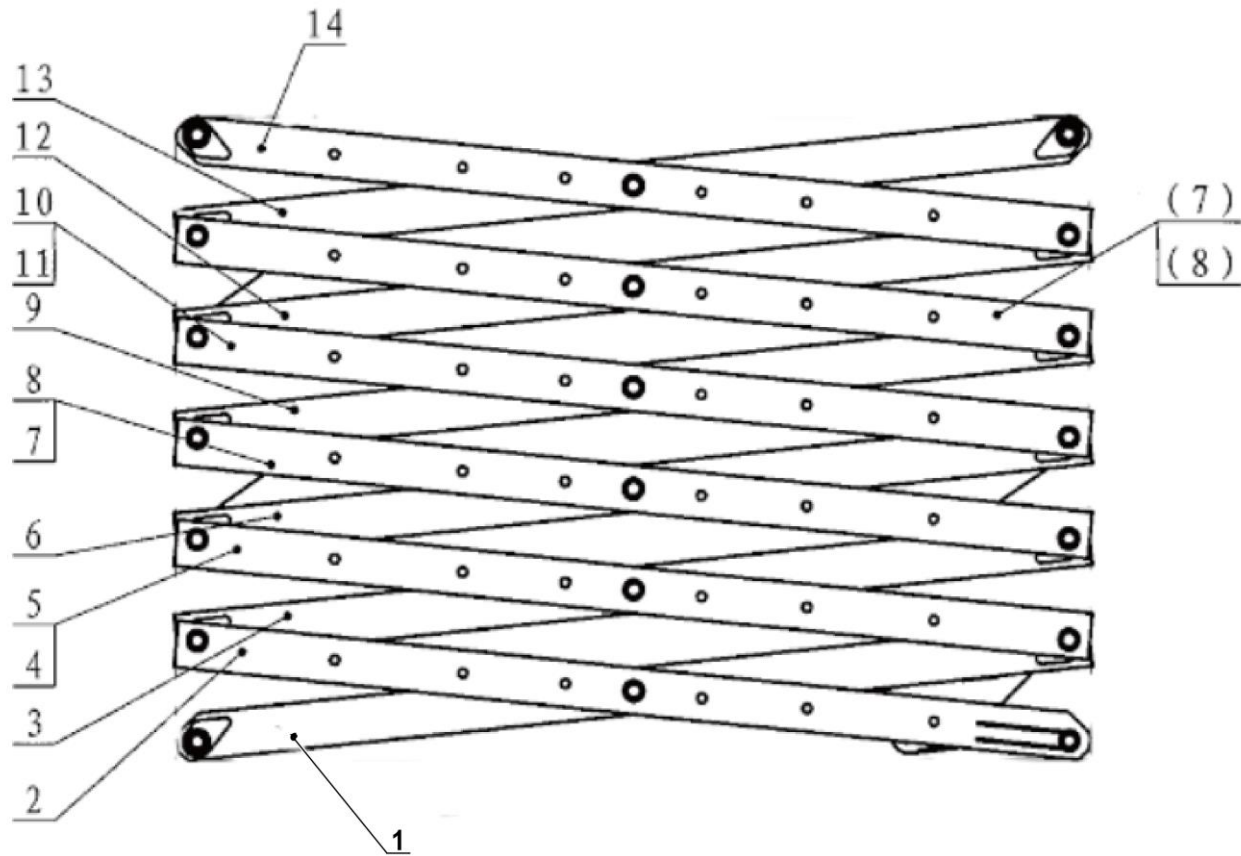


Plate assembly

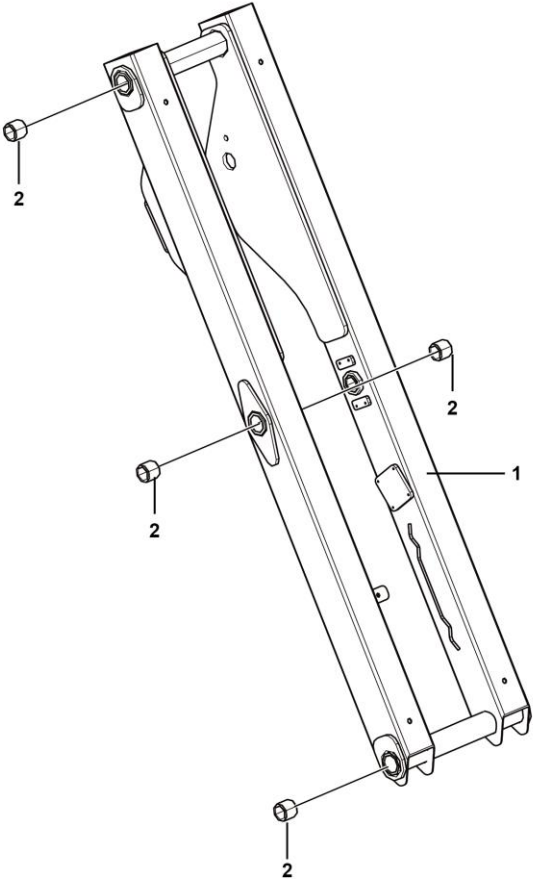


Fork frame assembly



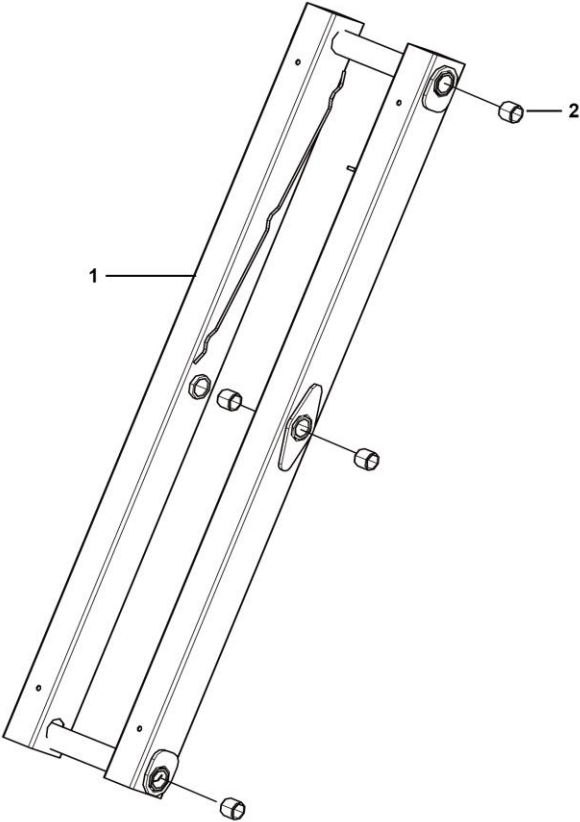
G1300-2520003431.S1a

Inner arm



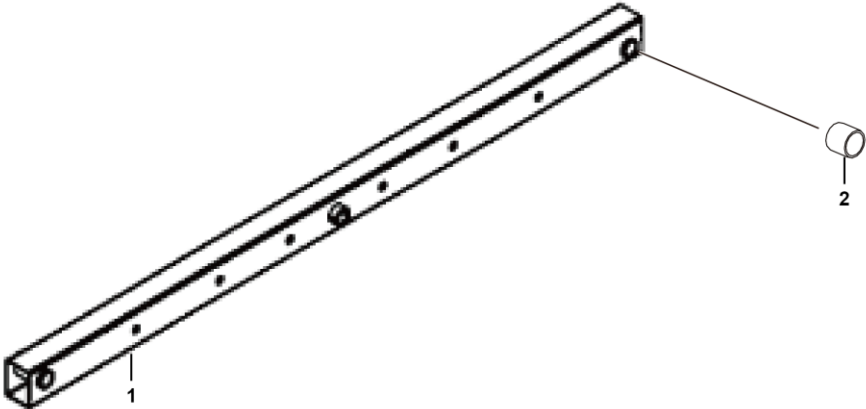


Inner arm

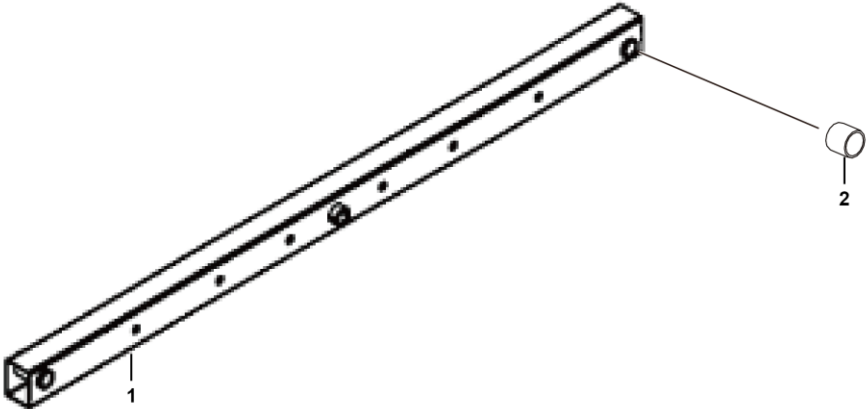




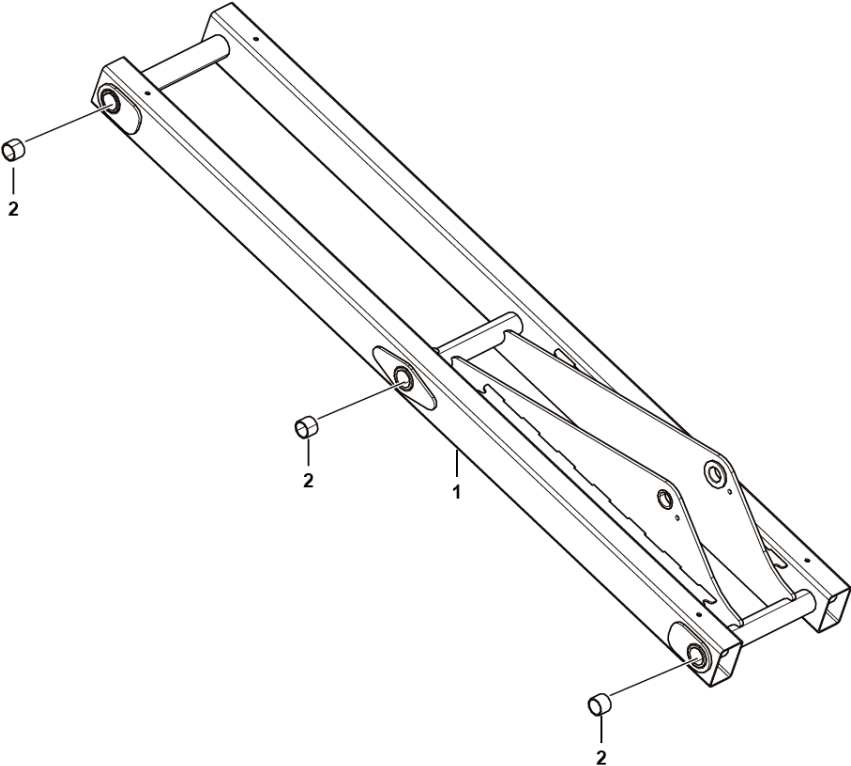
Left outer arm



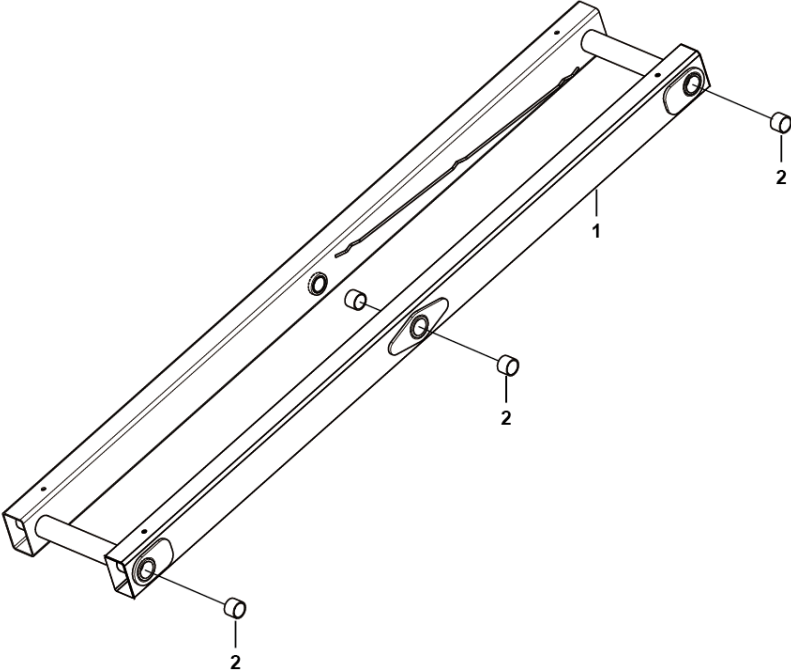
Right outer arm



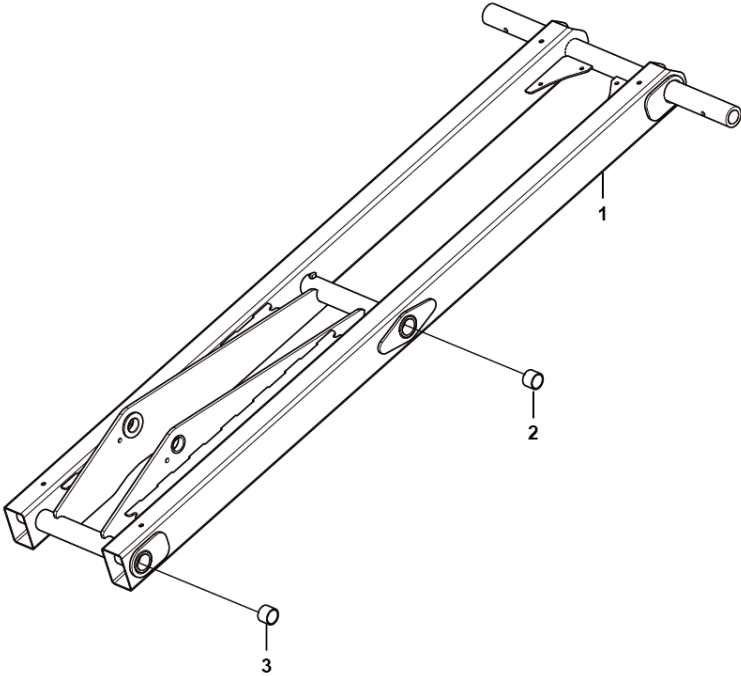
Inner arm



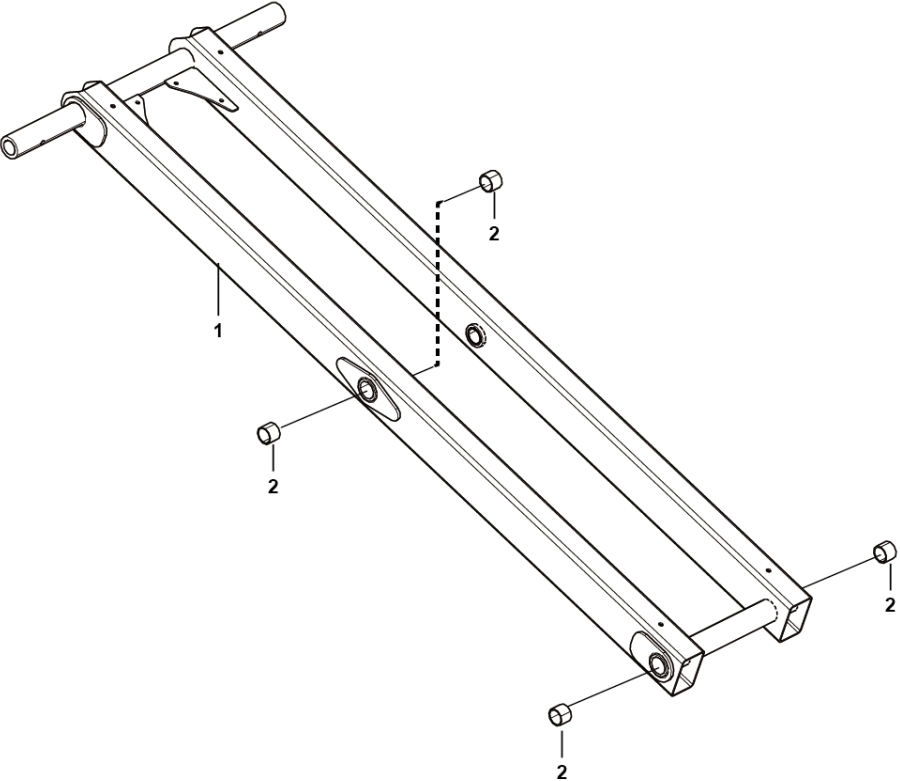
Inner arm



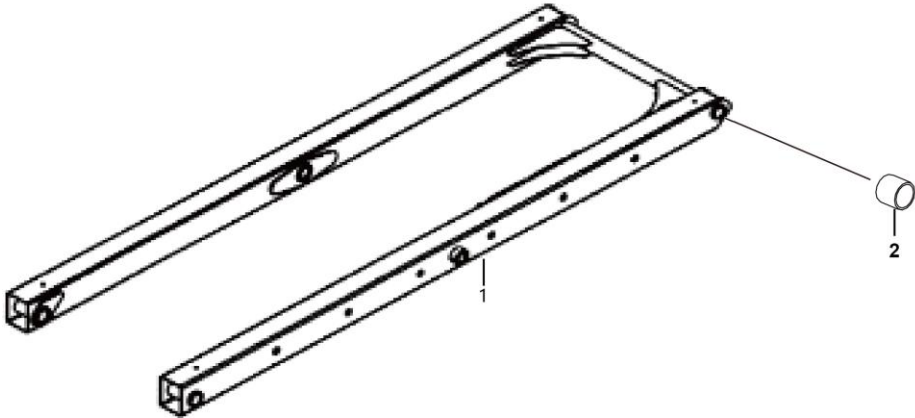
Inner arm



Inner arm



Outer arm

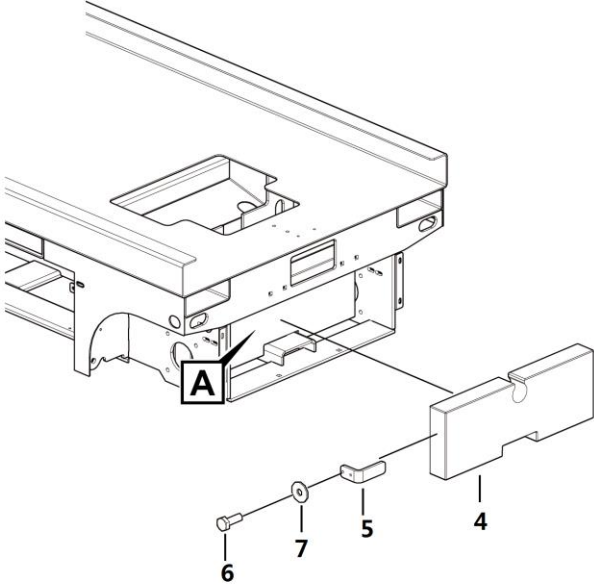
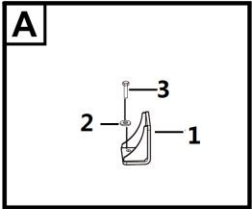


H SWING SYSTEM



LINGONG GROUP JINAN HEAVY MACHINERY CO., LTD.

Balance

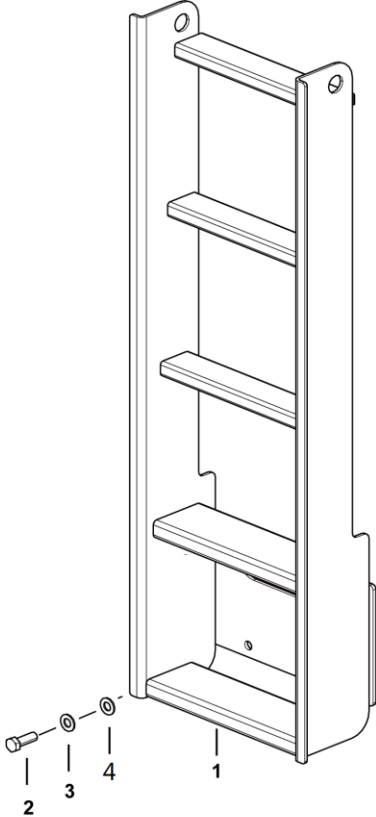


I
COVER ACCESSORY



LINGONG GROUP JINAN HEAVY MACHINERY CO., LTD.

Cover assembly

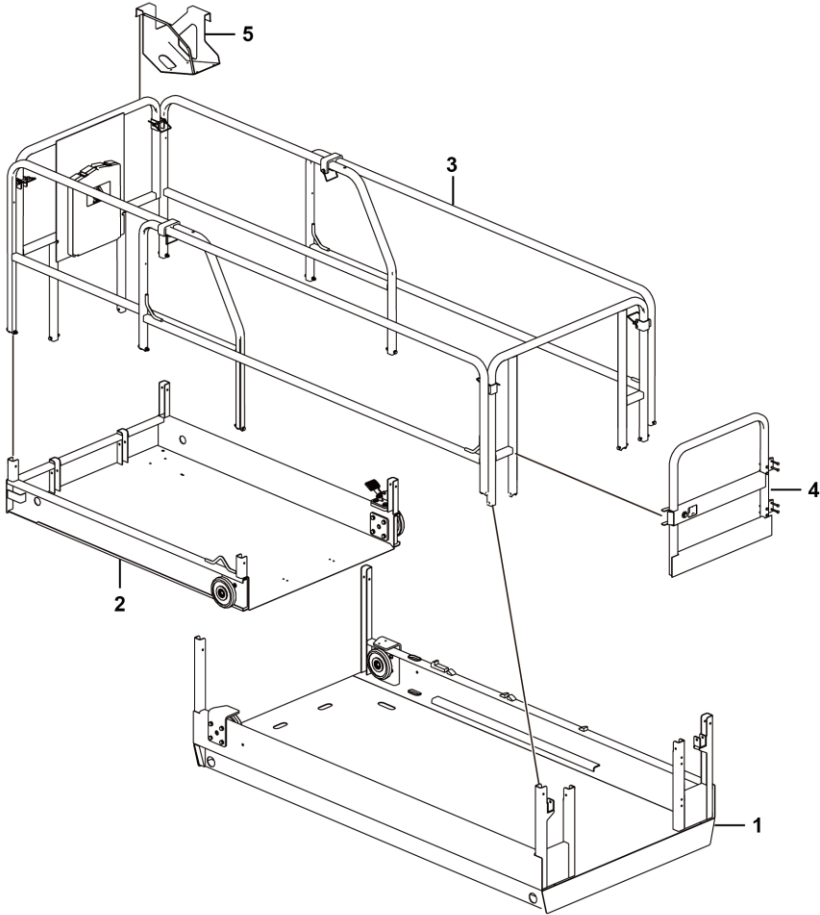


K
PLATFORM ASSEMBLY

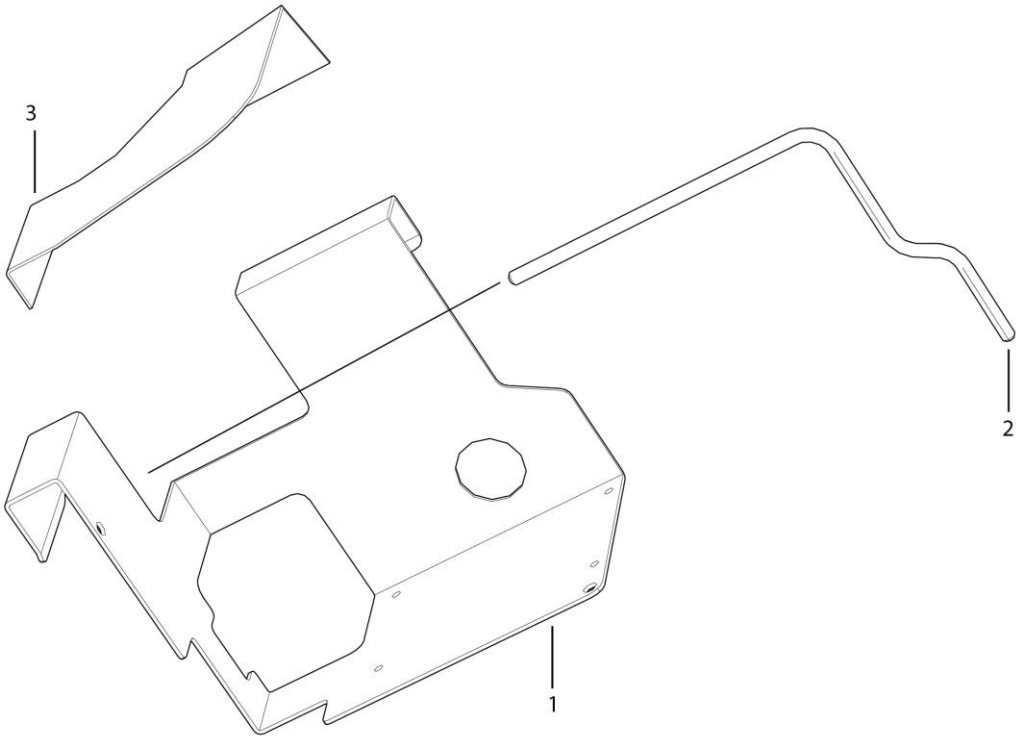


LINGONG GROUP JINAN HEAVY MACHINERY CO., LTD.

Platform

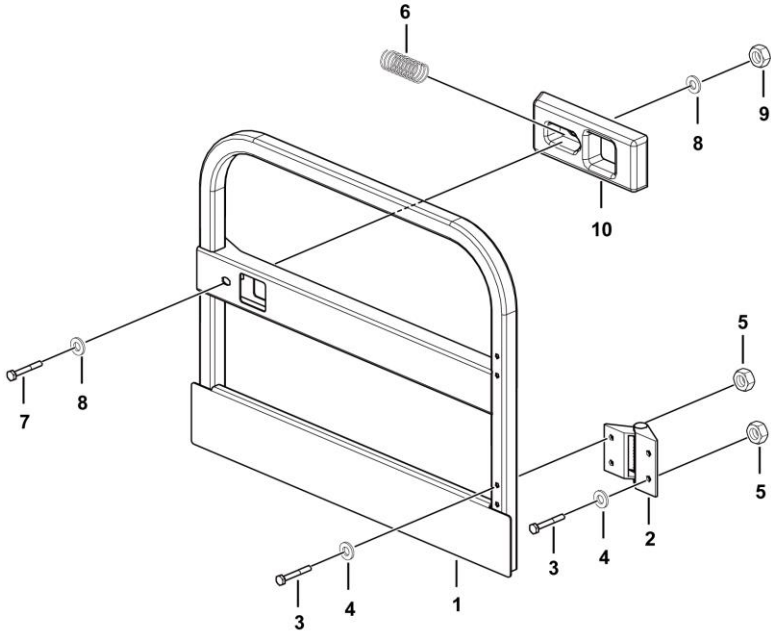


Bracket



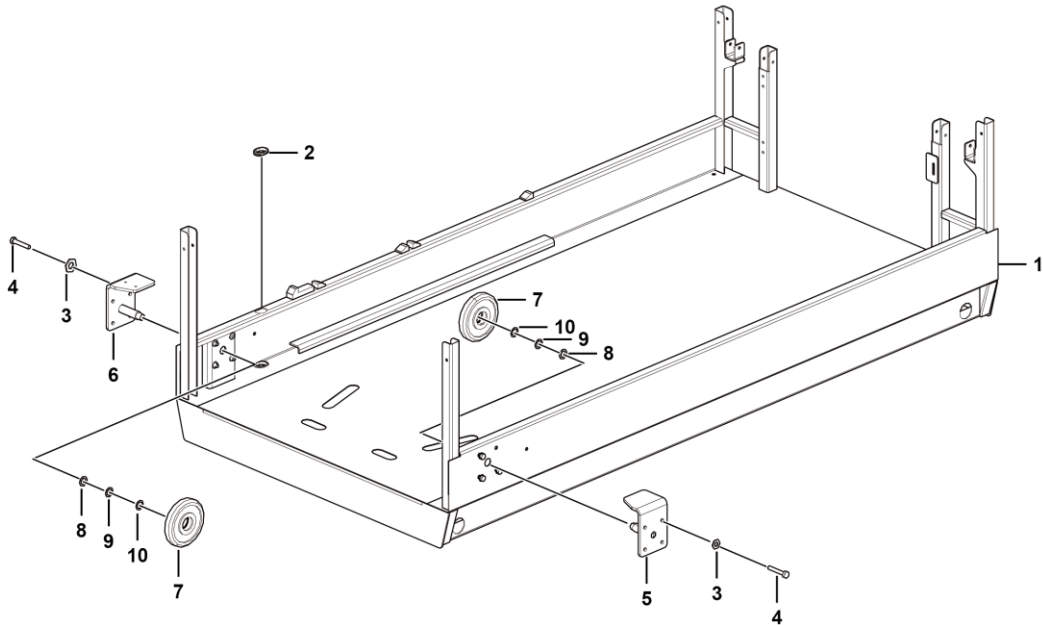
K2106-2521002803

Rotating door



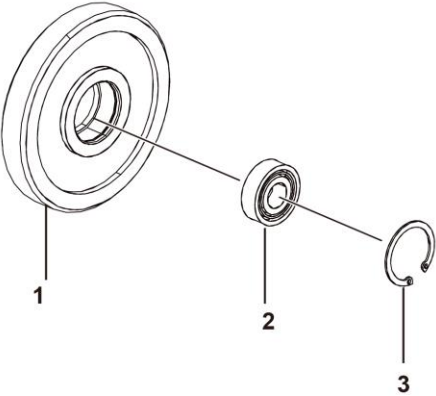
K2100-2521003865.S

Main platform



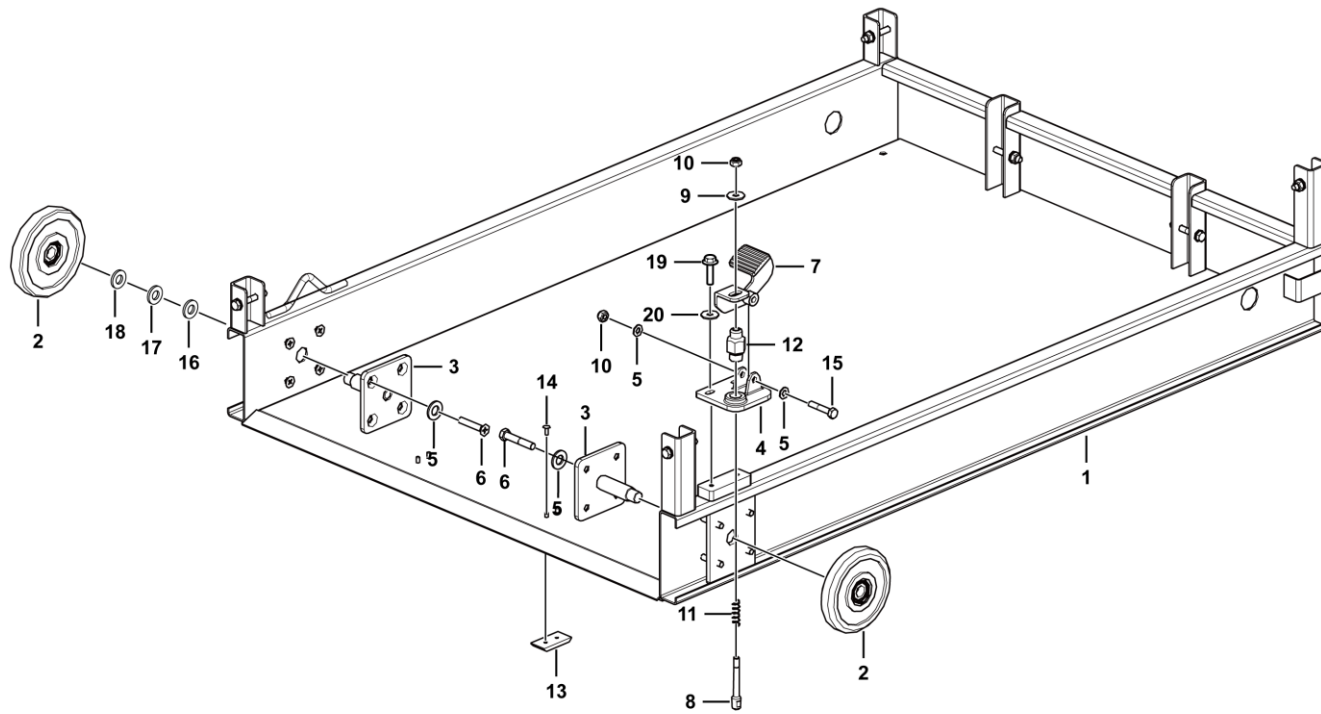
K2100-2521004769.S

Roller assembly



K2100-2521003593.S2a

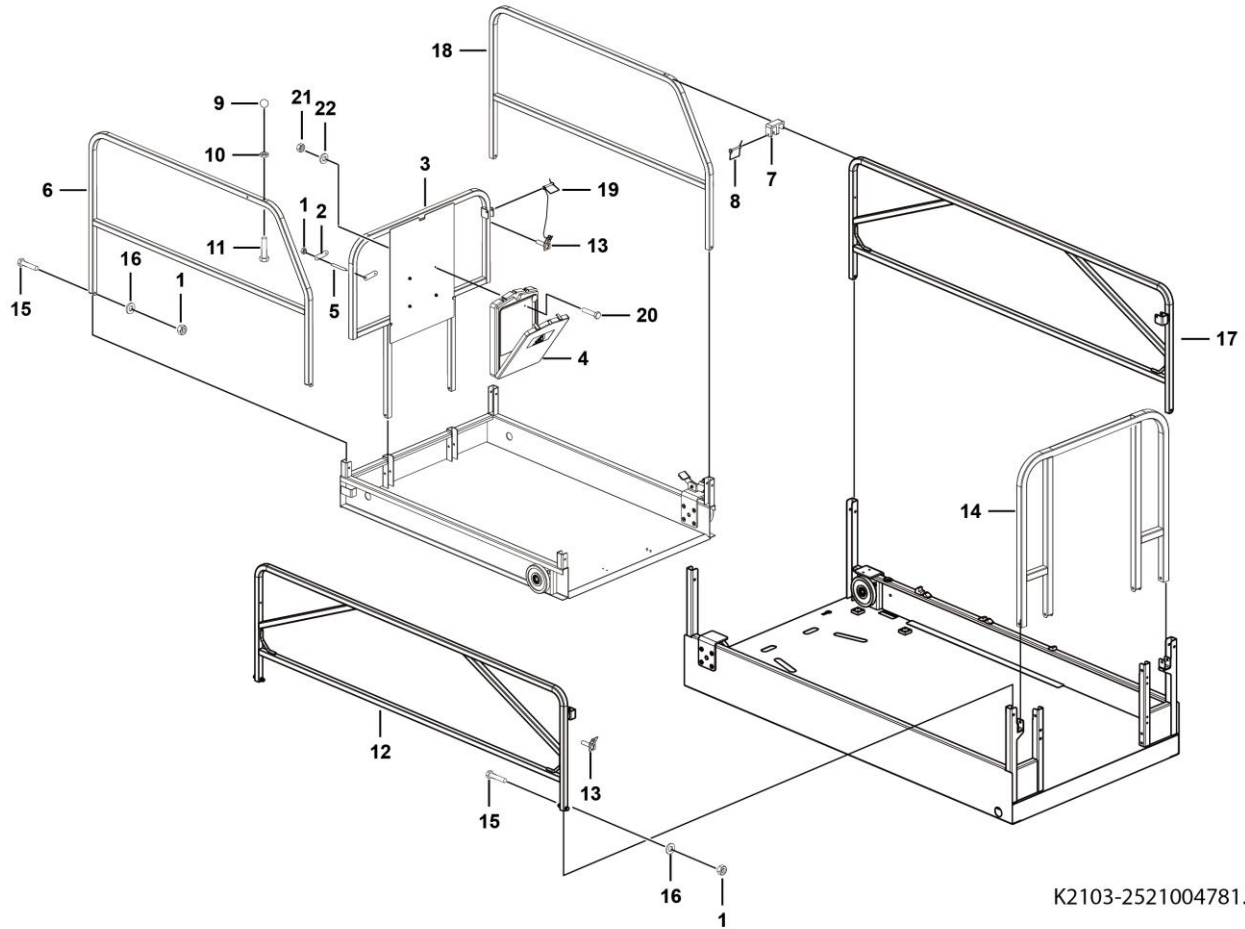
Extension platform assembly



K2100-2521004773.S

Key	Part No.	Description	Spare parts Y/N	Qty	Remarks
1	25210047711	Welding extended board	Y	1	
2	25210035932	Roller assembly, $\phi 146$	N	2	
3	25210030211	Weldment, roller support	Y	2	
4	25210012192	Forming (stamping, etc.), mount, fixing step, extension platform	Y	1	
5	4015010279	Washer gb97.1-10flznyc-480	Y	10	
6	4011010741	Bolt gb5782-m10*55flznyc-8.8-480	Y	8	
7	25210036501	Forming (stamping, etc.), step, extension platform	Y	1	
8	25210002911	Spring pin, m10*73	Y	1	
9	4015010278	Washer gb96.1-10flznyc-480	Y	1	
10	4013010296	Nut gb889.1-m10flznyc-8	Y	2	
11	25210002901	Spring, extension deck	Y	1	
12	25210002891	Spring seat, fixing spring, extension platform	Y	1	
13	25210012251	Slider	Y	2	
14	4019010177	Rivet gb12618-6*18	Y	4	
15	4011011195	Bolt gb5782-m10*50flznyc-10.9-480	Y	1	
16	25210011171	Shim20*2	Y	2	
17	25210011181	Shim20*1	Y	2	
18	25210011191	Shim20*0.5	Y	2	
19	4011011026	Bolt gb5783-m8*20flznyc-10.9-480	Y	2	
20	4015010289	Washer gb96.1-8flznyc-480	Y	2	

Folding guardrail



K2103-2521004781.S

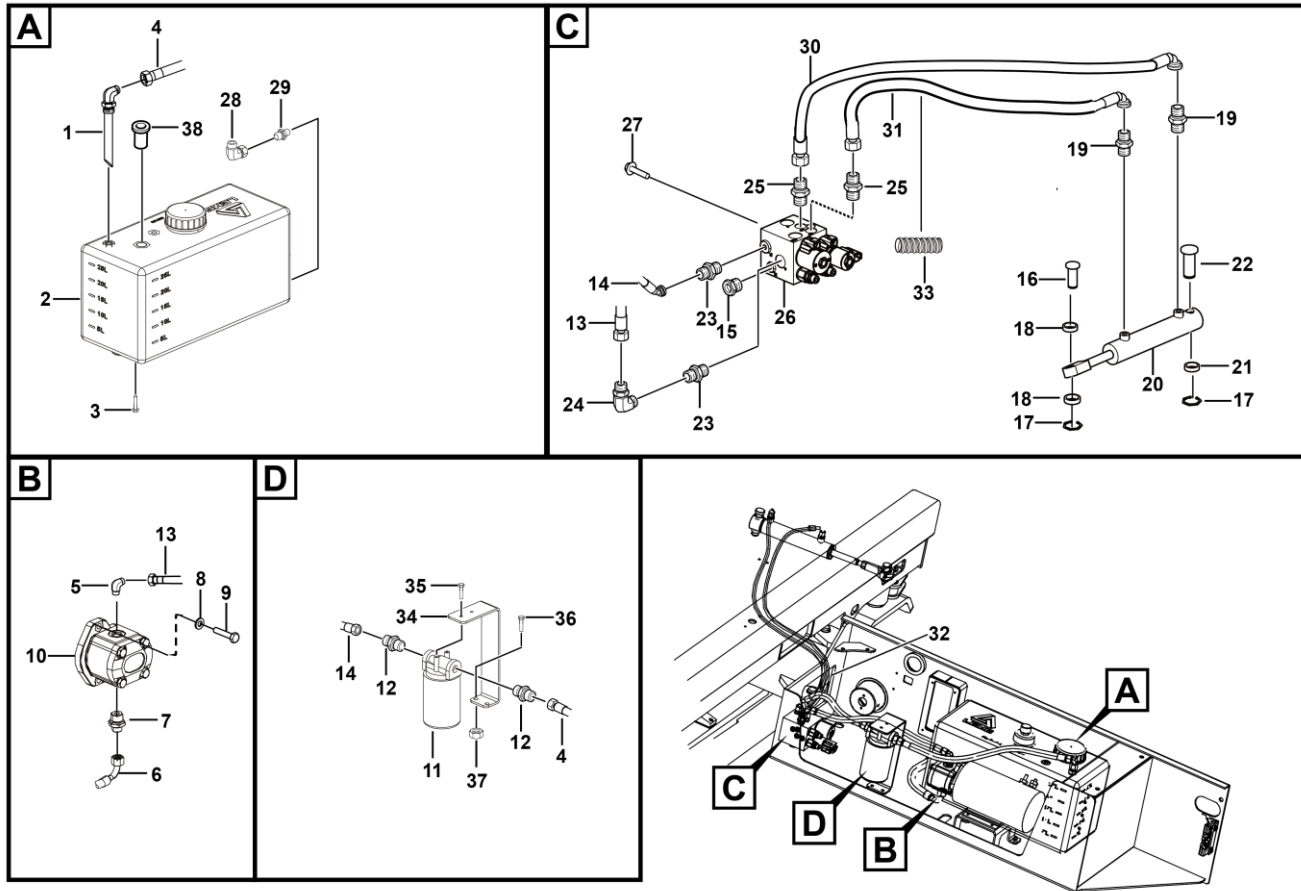
Key	Part No.	Description	Spare parts Y/N	Qty	Remarks
1	4013010297	Nut gb889.1-m8flznyc-8-480	Y	18	
2	25210047761	Plate	Y	6	
3	25210047802	Front handrail	Y	1	
4	25210000821	Manual box	Y	1	
5	25210047751	Shaft	Y	3	
6	25210038722	Extension left guardrail	Y	1	
7	25210013702	M-mount, fixing door, guardrail	Y	2	
8	4190002586	Pin - square pin with lug 9.5*70	Y	2	
9	4190001587	Ball handle 462102	Y	2	
10	4013010371	Nut gb6172.1-m10flznyc-10-480	Y	2	
11	4011010976	Bolt gb5783-m10*50flznyc-8.8-480	Y	2	
12	25210038702	Main left guardrail	Y	1	
13	4019010209	Break mandrel blind rivet gb12619-5*9	Y	4	
14	25210038692	Back guardrail	Y	1	
15	4011010919	Bolt gb5782-m8*55flznyc-8.8-480	Y	14	
16	4015010280	Washer gb97.1-8flznyc-480	Y	32	
17	25210038712	Main right guardrail	Y	1	
18	25210038732	Extension right guardrail	Y	1	
19	4190703890	D-pin 8*65 with 200mm chain and steel sheet	Y	4	
20	4011010757	Bolt gb16674-m6*20flznyc-8.8	Y	4	
21	4013010300	Nut gb889.1-m6flznyc-8-480	Y	4	
22	4015010284	Washer gb97.1-6flznyc-480	Y	4	

L
HYDRAULIC SYSTEM



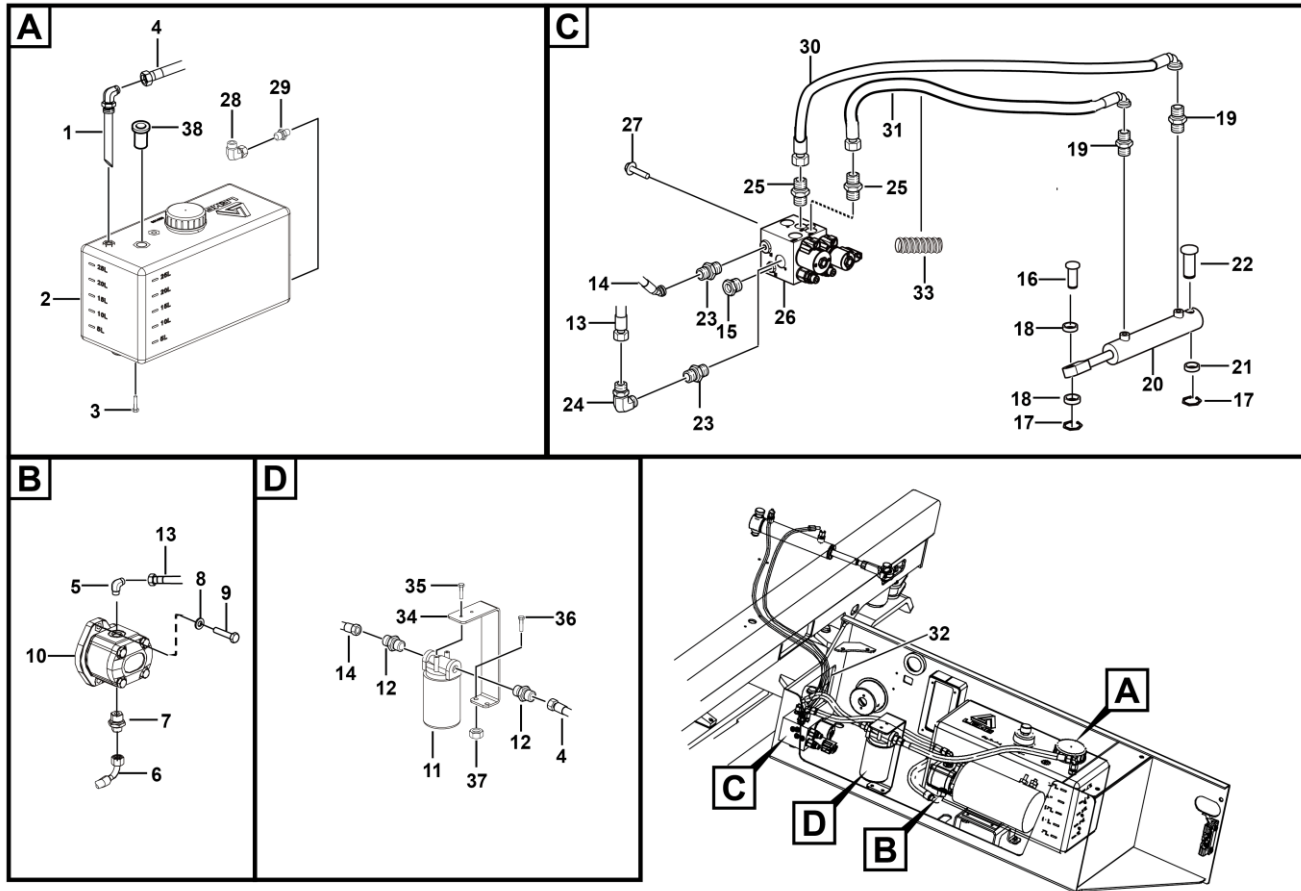
LINGONG GROUP JINAN HEAVY MACHINERY CO., LTD.

Drive hydraulic assembly



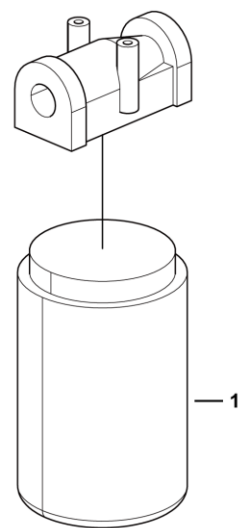
Key	Part No.	Description	Spare parts Y/N	Qty	Remarks
1	25070000721	Pipe syetem	Y	1	
2	4120703601	25l tank	Y	1	
3	4011010964	Bolt gb16674-m8*16flznyc-8.8-480	Y	4	
4	4120705902	Hose f481caca121208-620	Y	1	
5	4120001373	Fitting ge12lr1/2edomdcf	Y	1	
6	4120705971	Hose f481cacf151510-420	Y	1	
7	4120002235	Fitting ge15lredomdcf	Y	1	
8	4015010339	Washer gb97.1-10flznyc-300hv-480	Y	2	
9	4011010425	Bolt 3/8-24unf-2b*31-10.9	Y	2	
10	4120001488	Gear pump a101098620	Y	1	
11	4120001128	Filtersp-06x10	Y	1	
12	25070000091	Straight fitting, ϕ 31*43	Y	2	
13	4120706474	Hose f471tccacf121206-550	Y	1	
14	4120704984	Hosef481cacf121208-450	Y	1	
15	4120001227	Pressure tap ema3/1/4ed, ϕ 20*49	Y	1	
16	25070002543	Steer cylinder pin 20*59	Y	1	
17	4015010246	Snapping gb894.1-19-65mn	Y	2	
18	25070002524	Shaft sleeve ϕ 30	Y	2	
19	4120001177	Fitting ge08l7/16unfomdcf	Y	2	
20	4120704747	Steering cylinder	Y	1	
21	25070002531	Shaft sleeve 1, 27*9	Y	2	
22	25160001342	Cylinder pin, ϕ 19.5*84	Y	1	

Drive hydraulic assembly



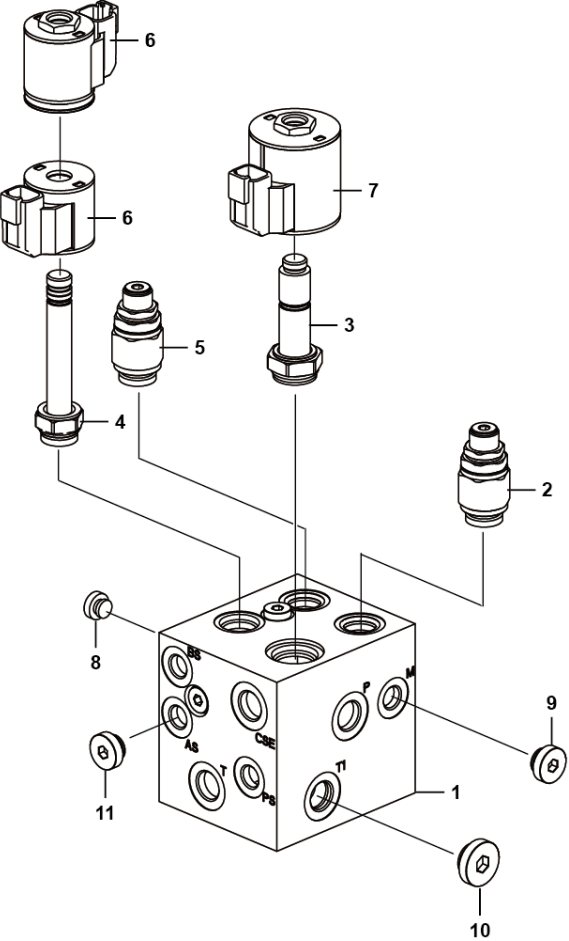
Key	Part No.	Description	Spare parts Y/N	Qty	Remarks
23	4120001224	Fitting ge12lredomdcf	Y	2	
24	4129900314	Fitting ew12lomda3c	Y	1	
25	4120001170	Fitting ge08lredomdcf	Y	2	
26	4120704774	Main valve st5158-ae00	Y	1	
27	4011010966	Bolt gb16674-m8*20flznyc-8.8-480	Y	4	
28	4129900308	Fitting ew15lomda3c	Y	1	
29	4120707646	Joint	Y	1	
30	4120705458	Hose f471tccacf080804-1550	Y	1	
31	4120705459	Hose f471tccacf080804-1300	Y	1	
32	27320100161	Jiaotiao	Y	2	
33	4120002721	Braided sheath fh-φ 72 (φ = 72mm)-500 (l=500mm)	Y	1	
34	25070006362	Plate	Y	1	
35	4011010735	Bolt gb16674-m6*16flznyc-8.8-480	Y	2	
36	4011011015	Bolt gb16674-m10*25flznyc-8.8-480	Y	2	
37	4013010372	Nut gb889.1-m10flznyc-8-480	Y	2	
38	4120001375	Air breather kkl-6x1cl	Y	1	

Filter



L2300-4120001128

Main valve st5158-ae00

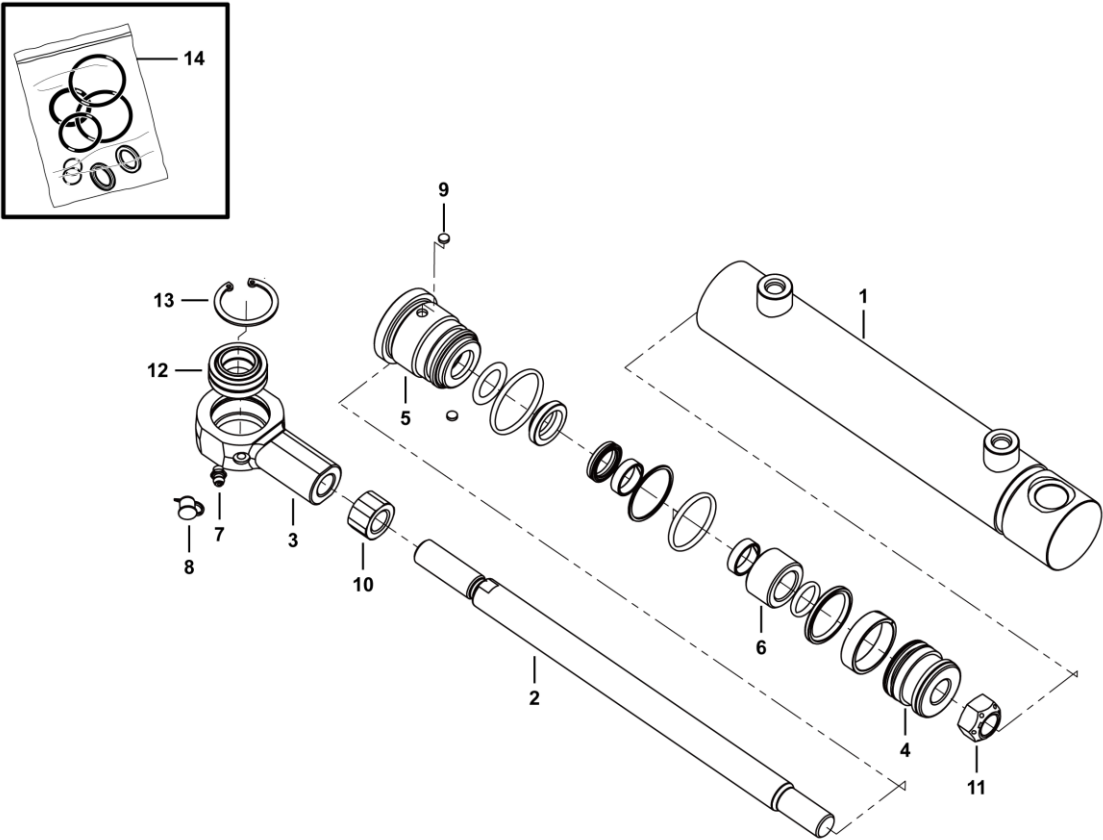


L2300-4120704774

Key	Part No.	Description	Spare parts Y/N	Qty	Remarks
1	4120704774001	Valve block st5158-a00m	Y	1	
2	4120001901002	Relief valve assembly strv08-g-210a, for limiting system pressure	Y	1	
3	4120001159003	Two-position four-way solenoid valve assembly sv10-40-0-n-0, for switching between lifting and steering	Y	1	
4	4120001159005	Three-position four-way solenoid valve assembly sv08-47a-0-n-0, , for switching between left turn and right turn	Y	1	
5	4120001901001	Relief valve strv08-b-120a	Y	1	
6	4120001490011	Coil, for controlling spool	Y	2	
7	4120001490012	Coil 4303720	N	1	
8	4129900116002	Plug 4bn-02wd	Y	10	
9	4190001419	Plug 4bn-04wd	Y	2	
10	4120001493	Plug 4bn-06wd	Y	1	
11	4120001159006	M6 damper stty002-1.0	Y	2	



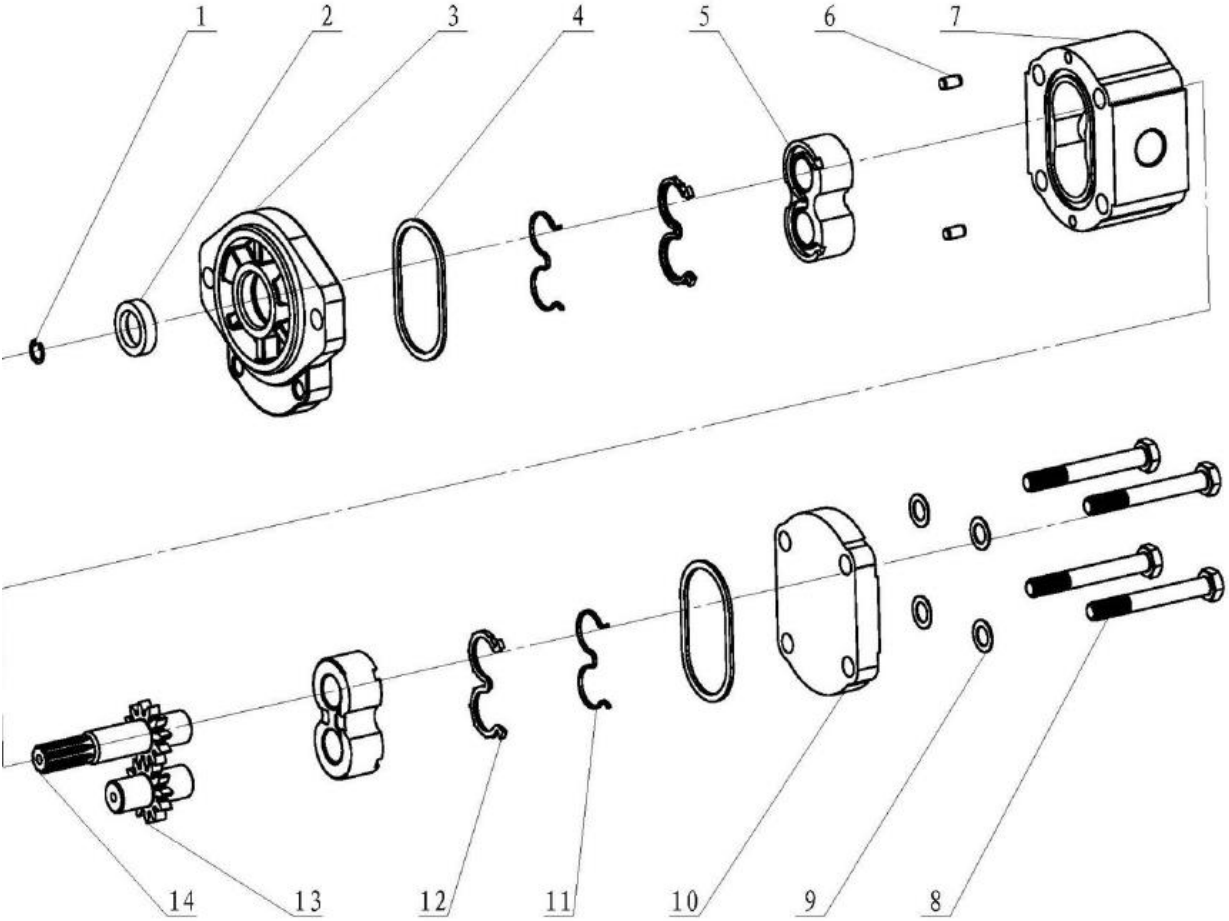
Steering cylinder



L2300-4120704747

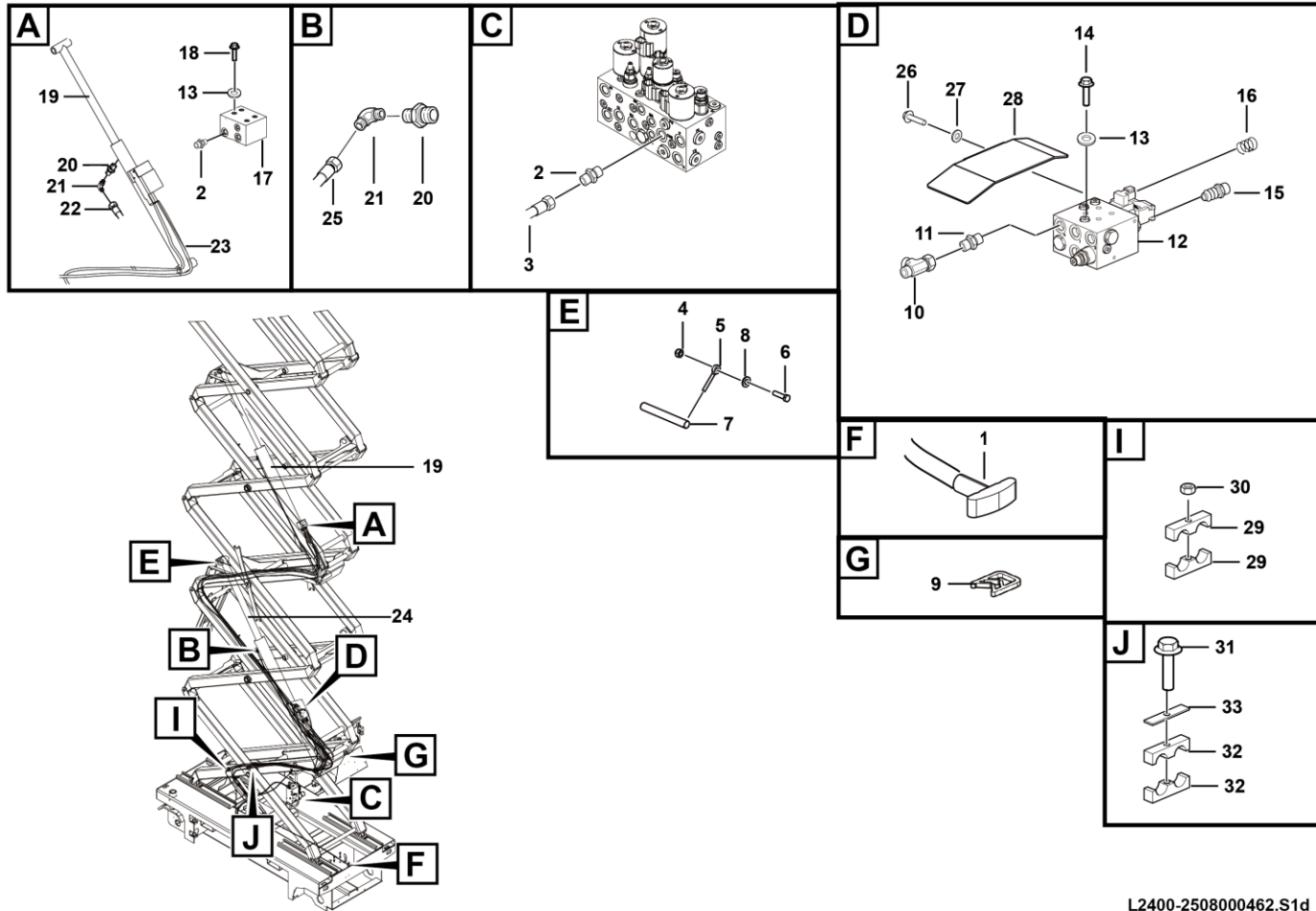
Key	Part No.	Description	Spare parts Y/N	Qty	Remarks
1	4120703766001	Sleeve assembly	Y	1	
2	4120703766002	Piston body	Y	1	
3	4120704747002	Joint	N	1	
4	4120703766004	Piston	Y	1	
5	4120703766005	Plate	Y	1	
6	4120704747003	Stop collar	Y	1	
7	4120703766016	Oil cup	Y	1	
8	4120703766017	Oil cup over	Y	1	
9	4120703766018	Locking tab 166301a100	Y	2	
10	4120704747006	Nut	N	1	
11	4120703766020	Screw nut	Y	1	
12	4120703766021	Bear	Y	1	
13	4120703766023	Circlips for shaft	Y	1	
14	4120704747001	Pack	Y	1	

Gear pump a101098620



Key	Part No.	Description	Spare parts Y/N	Qty	Remarks
1	4120001431005	Snap ring for hole p03700013	Y	1	
2	4120001431002	Oil seal p01200050	Y	1	
3	4120001431006	Front cover a012010236	Y	1	
4	4120001431003	Outer sealring p01010072	Y	2	
5	4120001431007	Shaft sleeve assembly a012460054	Y	2	
6	4120001431008	Dowel pin p03420002	Y	2	
7	4120001488001	Unit pump a012107630	Y	1	
8	4120001488002	Hexagon head bolt p03100114	Y	4	
9	4120001488003	Saddle rebound washer p03610032	N	4	
10	4120001488004	Rear cover a012020121	Y	1	
11	4120001431004	E-type snap ring p01100025	Y	2	
12	4120001431013	E-ring p01020077	Y	2	
13	4120001488005	Driven gear a012300223	Y	1	
14	4120001488006	Driving gear a012203638	Y	1	

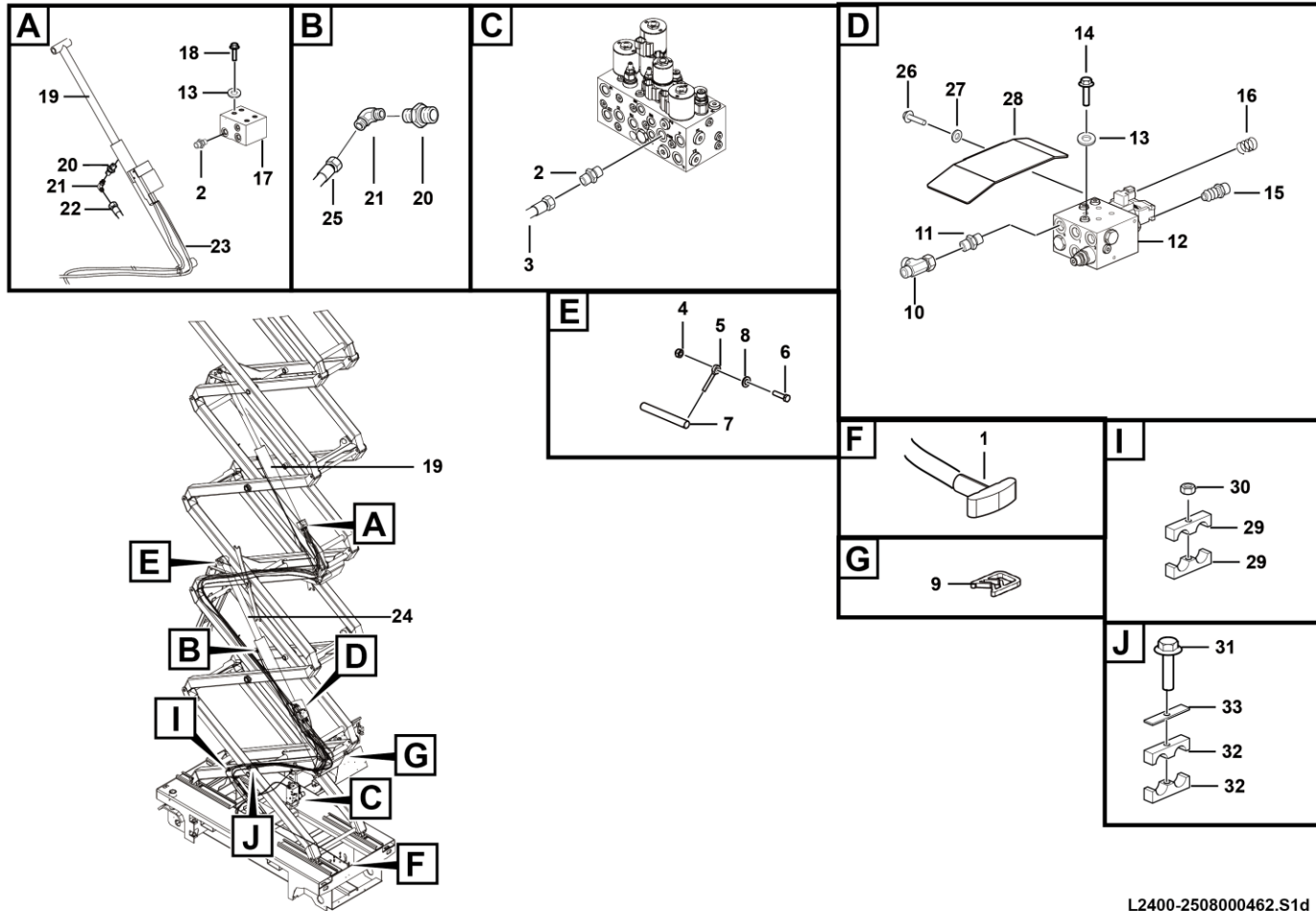
Lifting hydraulic assembly



L2400-2508000462.S1d

Key	Part No.	Description	Spare parts Y/N	Qty	Remarks
1	25080006151	Wire	Y	1	
2	4120001224	Fitting ge12lredomdcf	Y	6	
3	4120705943	Hose fc402caca121206-4800-pg1300	Y	2	
4	4013010296	Nut gb889.1-m10flznyc-8	Y	4	
5	25200000641	Pin. 10*70	Y	4	
6	4011011046	Bolt gb5783-m10*45flznyc-8.8-480	Y	4	
7	4016010162	Pin lzb001 a38*272*11	Y	4	
8	4015010339	Washer gb97.1-10flznyc-300hv-480	Y	8	
9	27320100161	Jiaotiao	Y	4	
10	4120001168	Three-way jiont	Y	1	
11	4120001165	Fitting ge10lr3/8edomdcf	Y	1	
12	4120703742	Cylinder valve block assembly st4846-ac0a	Y	1	
13	25080002881	M8 hard gasket,16*8.5*3	Y	8	
14	4011010821	Bolt gb5782-m8*80flznyc-12.9-480	Y	4	
15	4120704524	Damping	Y	1	
16	25080001331	Spring 1.5*15*30	Y	1	
17	4120706622	Valve	Y	1	
18	4014010232	Bolt gb5782-m8*70flznyc-12.9-480	Y	4	
19	4120704504	Lifting cylinder	Y	1	
20	4120001188	Fitting ge10lredomdcf	Y	2	
21	4120001166	Fitting ew10lomdcf	Y	2	
22	4120705941	Hosefc402caca101005-8900-pg2550	Y	1	

Lifting hydraulic assembly

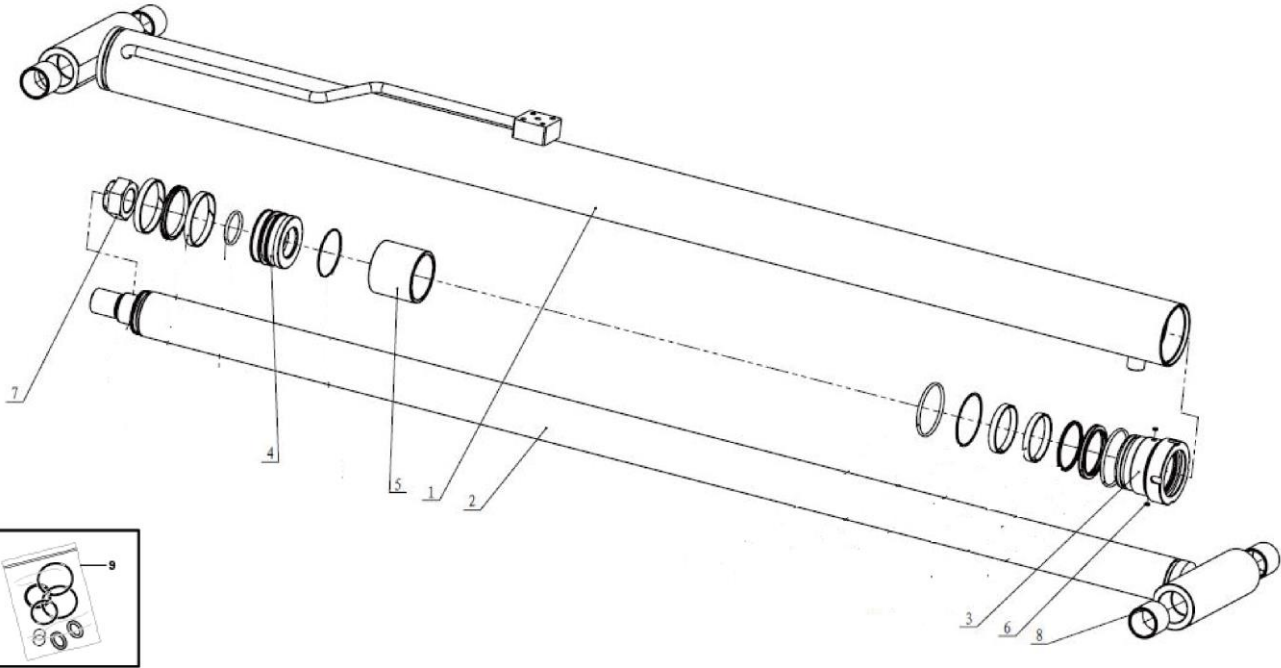


L2400-2508000462.S1d

Key	Part No.	Description	Spare parts Y/N	Qty	Remarks
23	4120705942	Hosefc402caca121205-7900-pg2550	Y	1	
24	4120704503	Lifting cylinder	Y	1	
25	4120705461	Hose fc402cacf101005-1050	Y	1	
26	4014010181	Screw gb70.1-m6*12flznyc-8.8-480	Y	2	
27	4015010284	Washer gb97.1-6flznyc-480	Y	2	
28	25080005131	Plate	Y	1	
29	4120702850	Pipe clamp sxt*g16-217.2 (m8*50)	Y	1	
30	4013010297	Nut gb889.1-m8flznyc-8-480	Y	1	
31	4011011019	Bolt	Y	1	
32	25080000143	Pipe clamp2, for fixing hose	Y	2	
33	25080000151	Pipe clamp2, for fixing hose	Y	1	

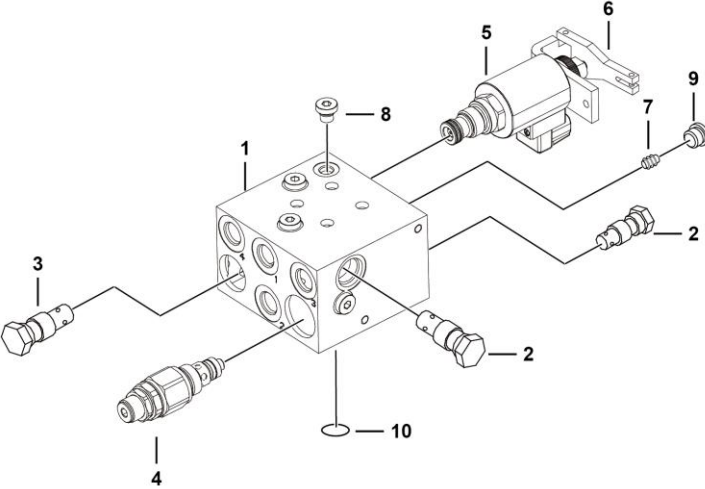


Lifting cylinder



L2400-4120704503

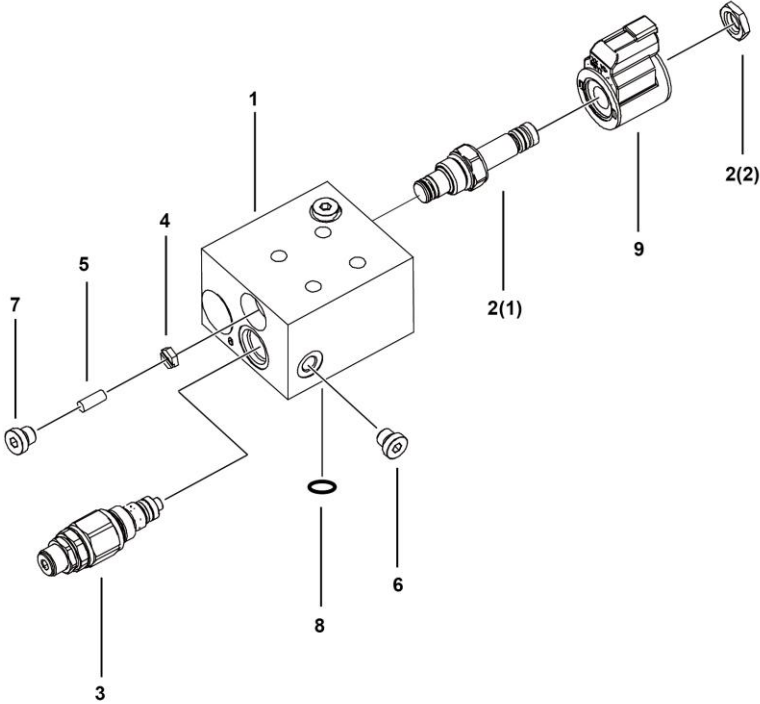
Cylinder valve block assembly st4846-ac0a



L2400-4120703742

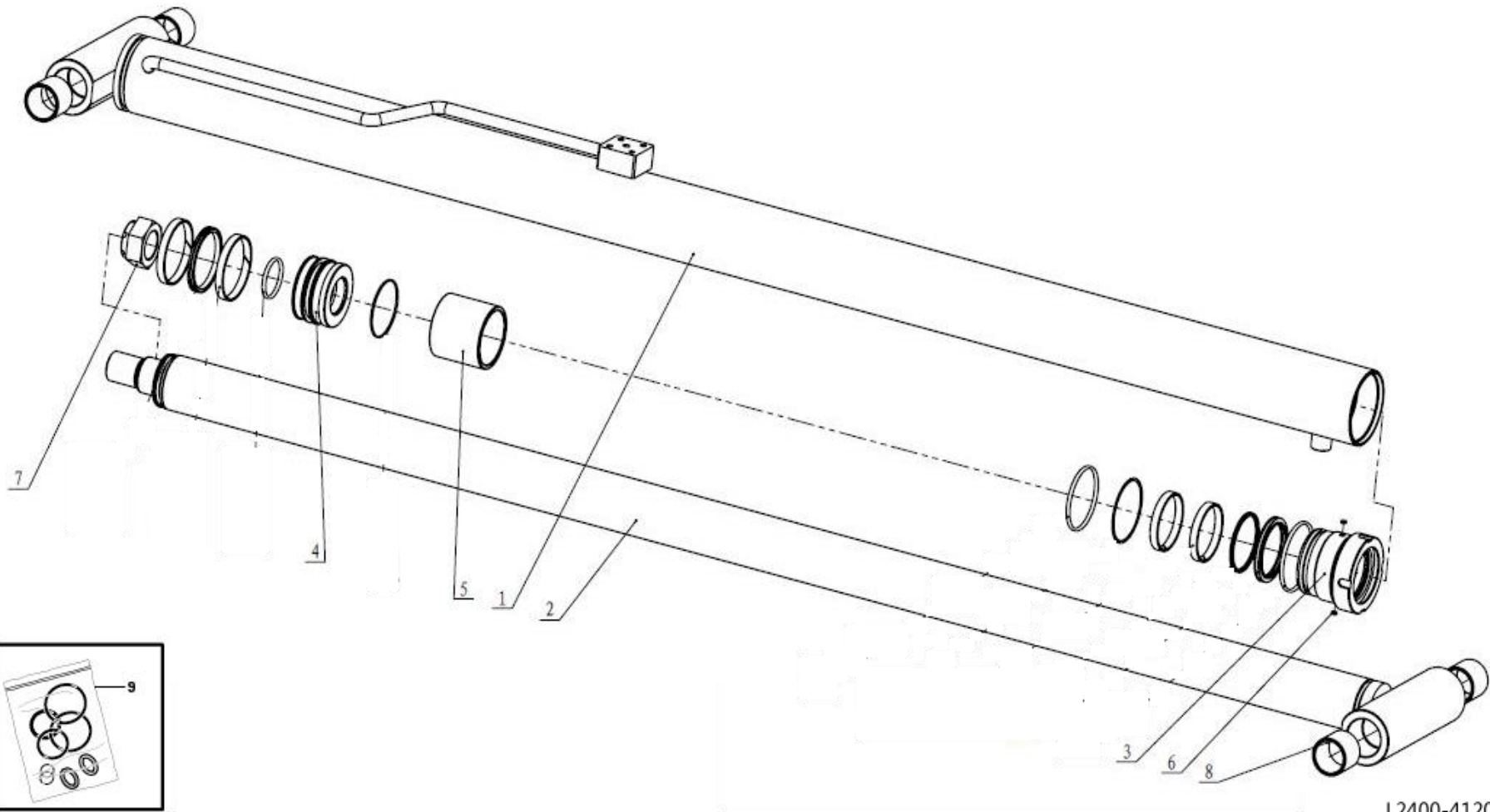
Key	Part No.	Description	Spare parts Y/N	Qty	Remarks
1	4120703742001	Valve block st4846-a00am	Y	1	
2	4120001490007	Check valve stcv08-0-000a, for controlling inlet flow direction of 2-speed motor	N	2	
3	4120703744003	Check valve stcv08-0-002a	Y	1	
4	4120001901001	Relief valve strv08-b-120a	Y	1	
5	4120703742005	Proportional solenoid valve pj16084a0, lowering reversing fork	Y	1	
6	4120703742011	Emergency mechanism stty039	Y	1	
7	4120001159010	M6 damper stty002-0.6	Y	1	
8	4129900116002	Plug 4bn-02wd	Y	4	
9	4120002398	Plug 4mn-14wd	Y	1	
10	4120002399	O-ring 10.77*2.62	Y	1	

Upper cylinder valve block assembly st4960-ac00



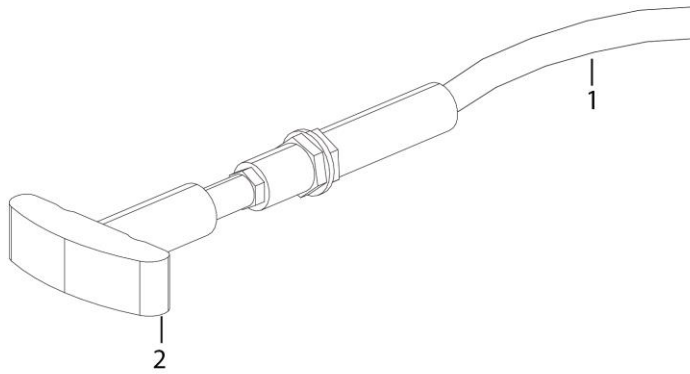
L2400-4120704028

Lifting cylinder



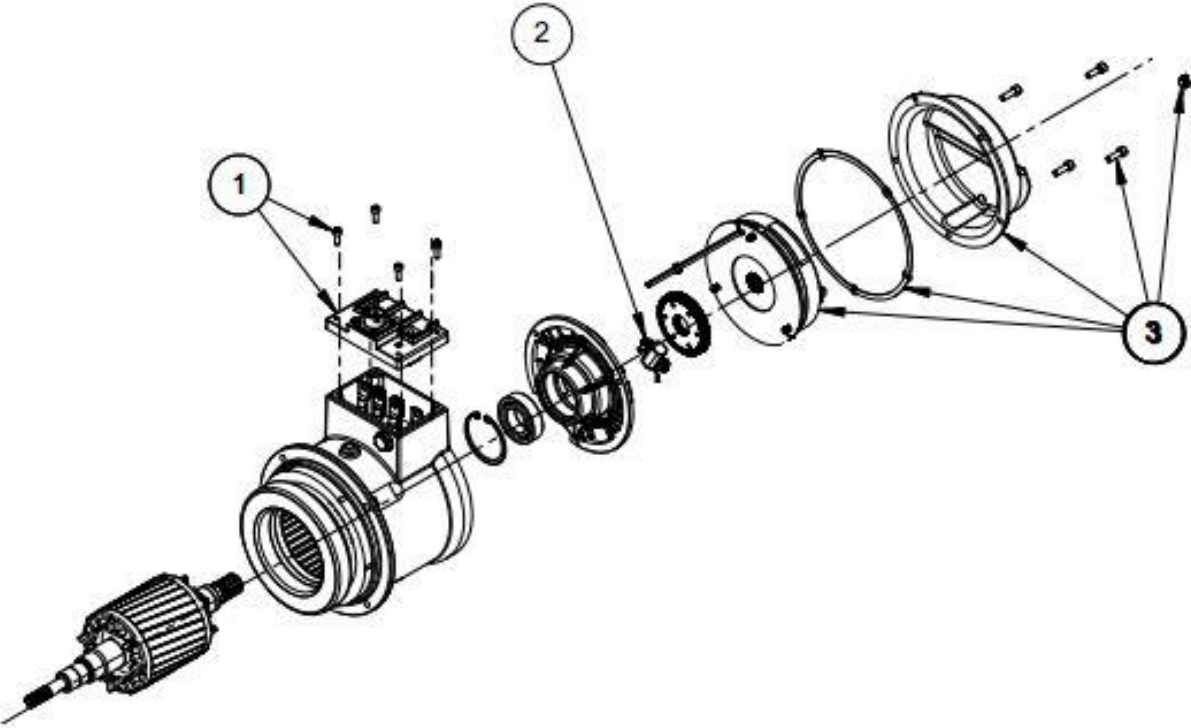
L2400-4120704504

Cable assembly



L2400-2508000615.S

Pump

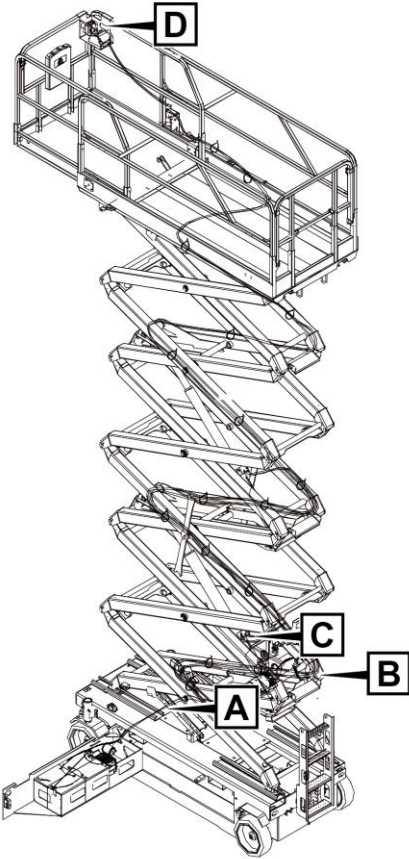
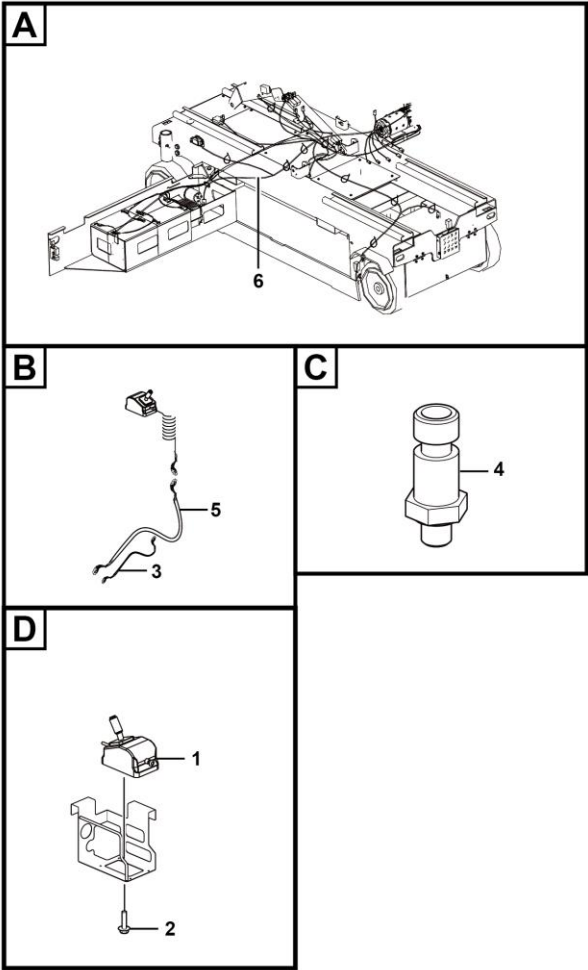


M
ELECTRIC SYSTEM

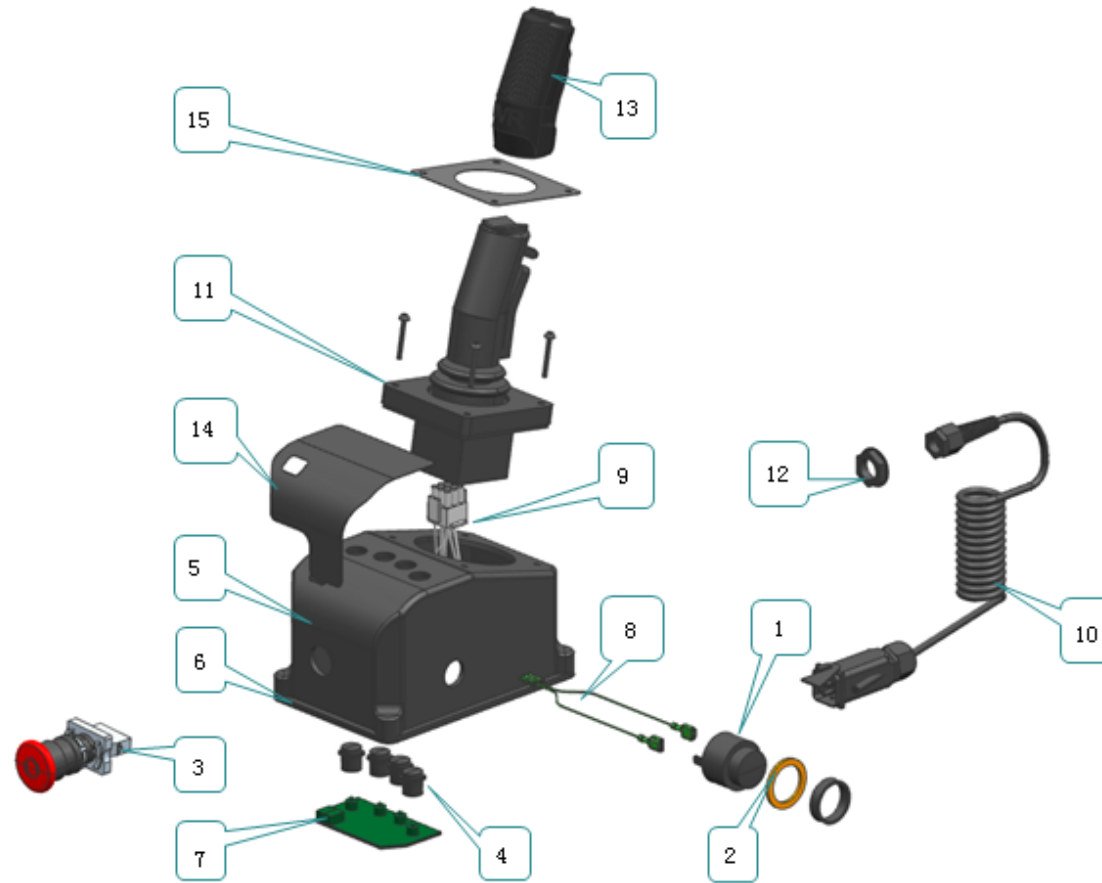


LINGONG GROUP JINAN HEAVY MACHINERY CO., LTD.

Electrical assembly

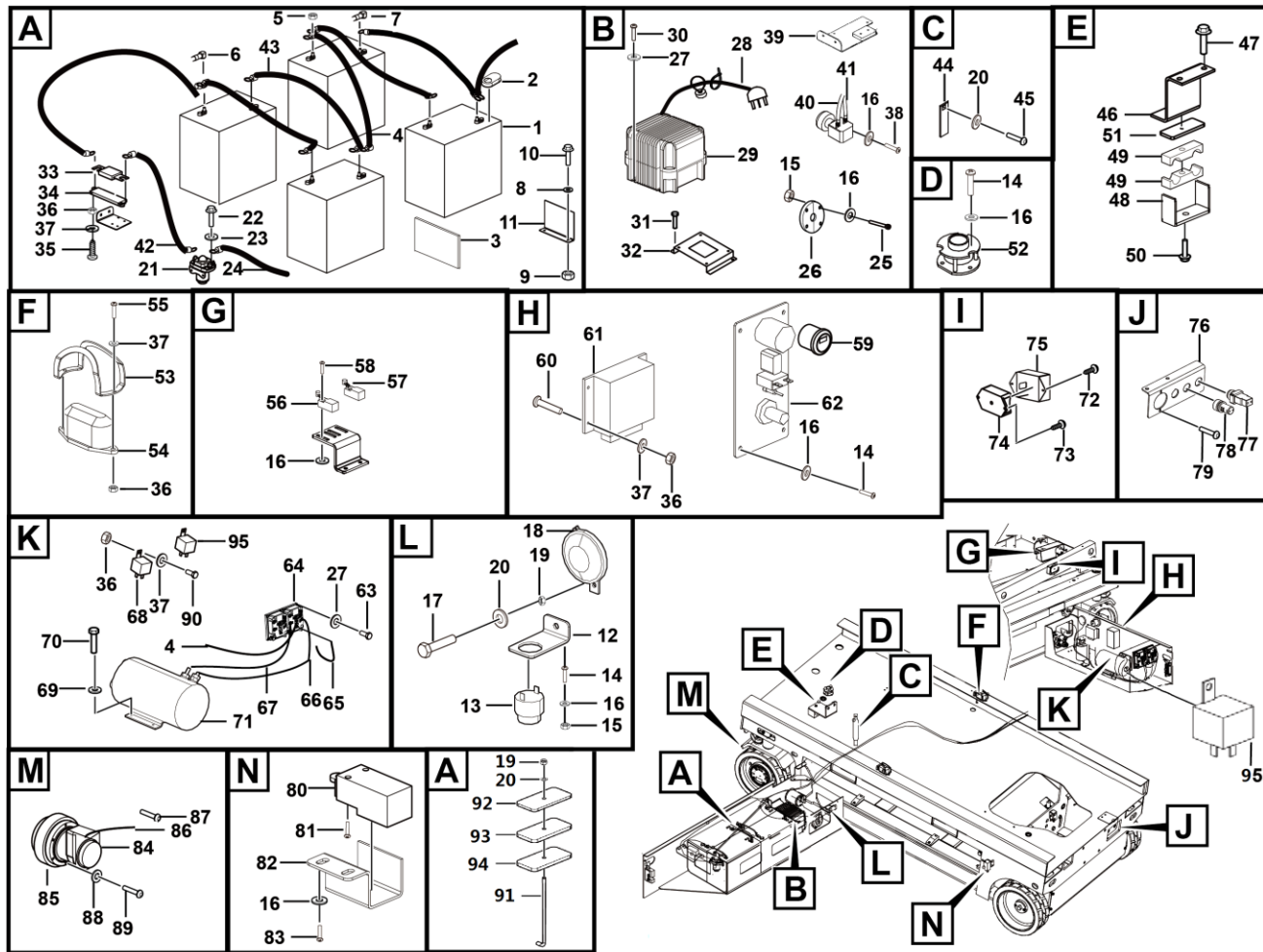


Pcu



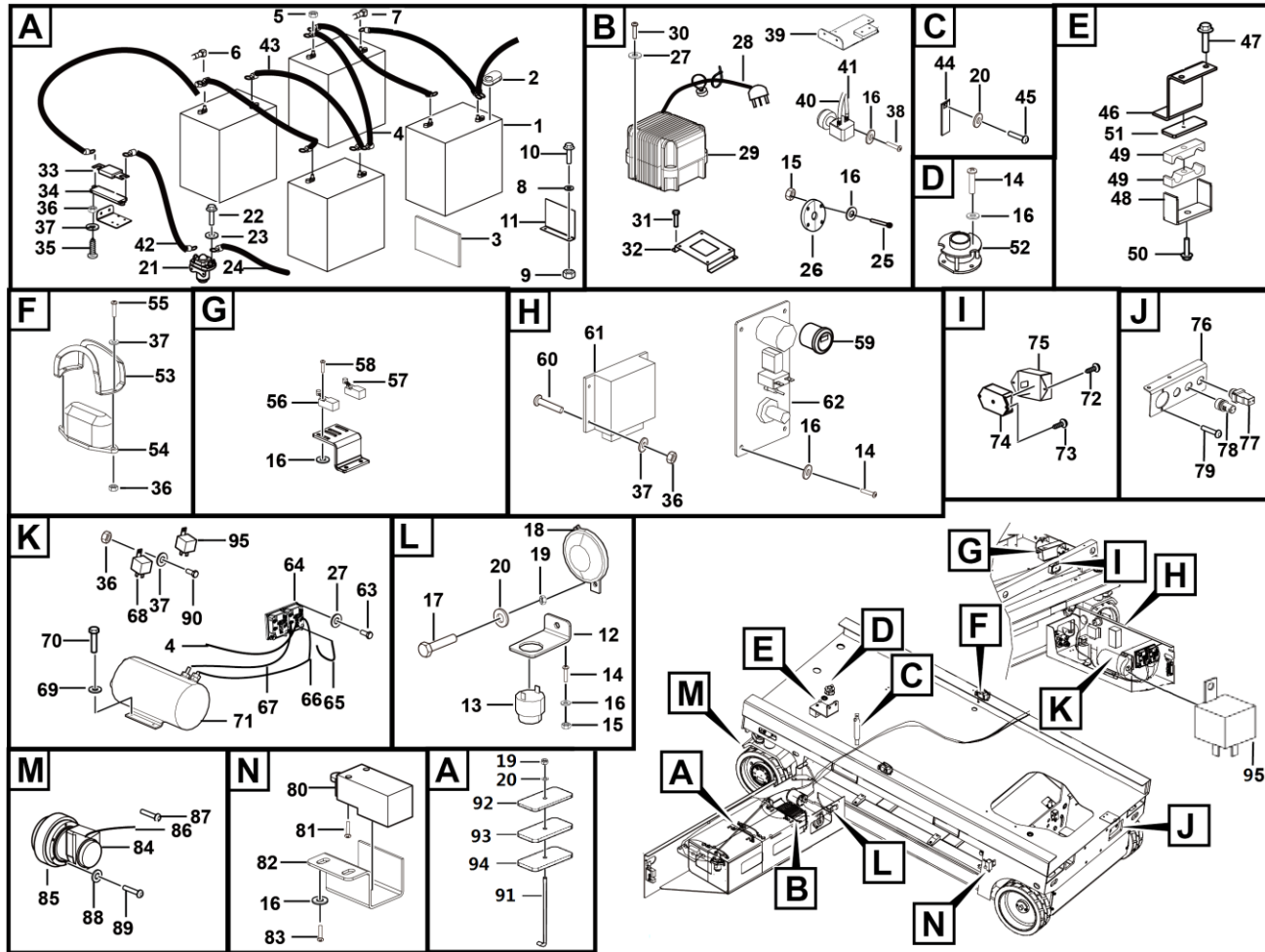
Key	Part No.	Description	Spare parts Y/N	Qty	Remarks
1	4130000797	Buzzer,cy-3631-24v	Y	1	
2	4130702006001	Buzzer rubber gasket29700048	Y	1	
3	4130701751007	Emergency stop switch 10420049	Y	1	
4	4130000862010	Button cap	Y	4	
5	4130702006003	Hydc plastic box body 20020043	Y	1	
6	4130702006004	Hydc plastic box cover 20020042	Y	1	
7	4130001046007	Pcba	Y	1	
8	4130001046015	Buzzer harness 10470100	N	1	
9	4130701751011	Joystick adapter harness assembly 10470114	Y	1	
10	4130001046009	Spring harness 200011	Y	1	
11	4130000862002	Platform controller handle	Y	1	
12	4130702006007	Heyco 8461spring wire plastic nut29700005	Y	1	
13	4130701751012	Silicone sleeve for joystick 20020132	Y	1	
14	4130702429001	Surface	Y	1	
15	4130702006009	V7-pcu joystick direction decal20020232	Y	1	

Chassis electric systems



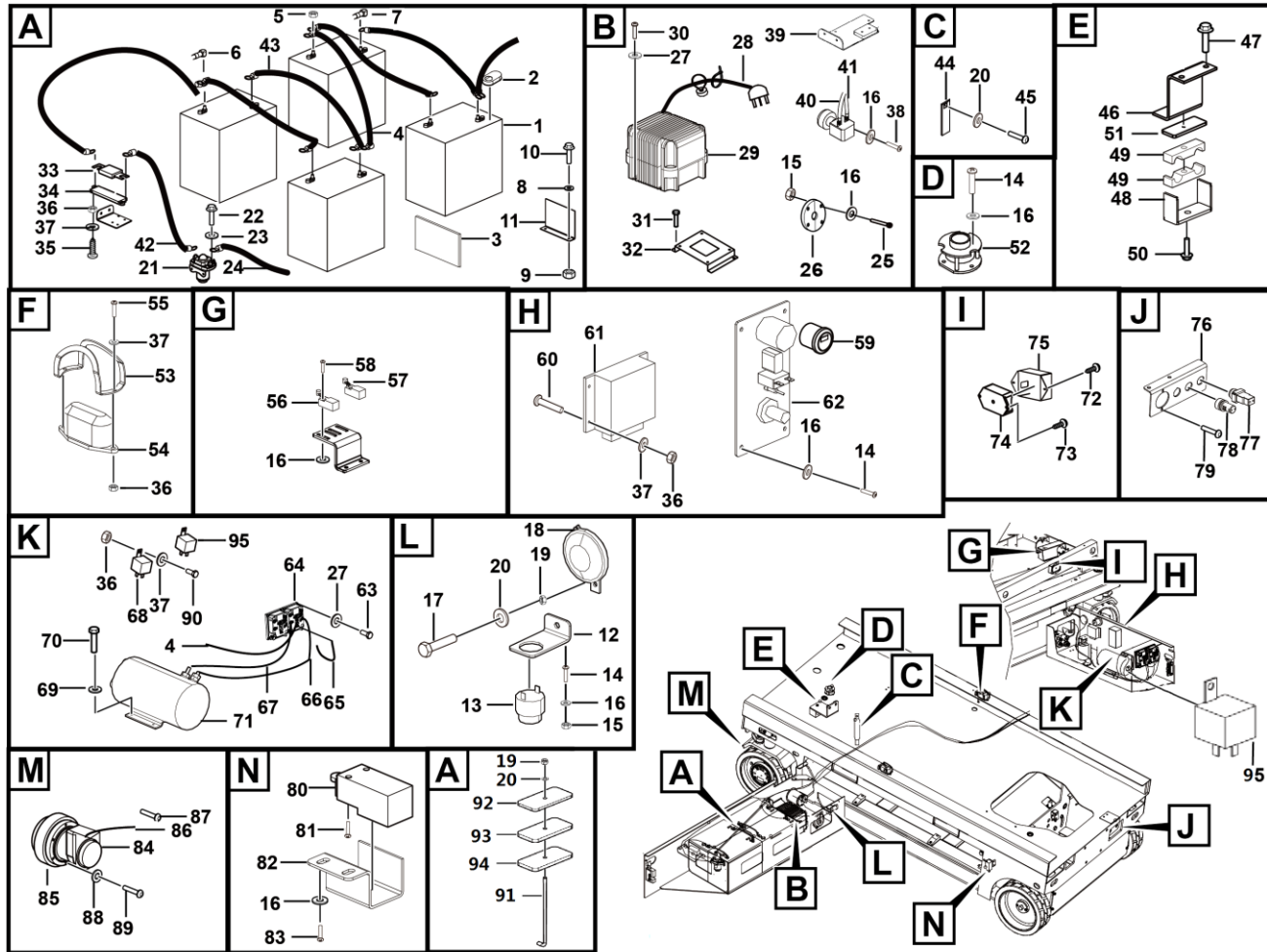
Key	Part No.	Description	Spare parts Y/N	Qty	Remarks
1	4130000712	Battery t-1275	Y	4	
2	25320000171	Terminal cover	Y	8	
3	25320003811	Rubber plate	Y	2	
4	25320008262	Wire p35*260	Y	1	
5	4013010382	Ifi145-2002-hexagon flange nut 5/16-18unc-2b	Y	8	
6	25320015671	Power cable cap - red	Y	10	
7	25320015681	Power cable cap - black	Y	8	
8	4015010278	Washer gb96.1-10flznyc-480	Y	4	
9	4013010296	Nut gb889.1-m10flznyc-8	Y	2	
10	4011010722	Bolt gb5783-m10*25flznyc-8.8-480	Y	2	
11	25320000061	Forming (stamping, etc.),plate,for fixing battery	Y	1	
12	25320006271	Bracket	Y	1	
13	4130000797	Buzzer,cy-3631-24v	Y	1	
14	4014010131	Screw gb70.1-m5*16flznyc-8.8-480	Y	6	
15	4013010305	Nut gb889.1-m5flznyc-8-480	Y	6	
16	4015010283	Washer gb97.1-5flznyc-480	Y	30	
17	4011010966	Bolt gb16674-m8*20flznyc-8.8-480	Y	1	
18	4130000906	Monophonic disc woofer	Y	1	
19	4013010297	Nut gb889.1-m8flznyc-8-480	Y	3	
20	4015010280	Washer gb97.1-8flznyc-480	Y	6	
21	4130702085	Main contactor-24v	Y	1	
22	4011011061	Bolt gb16674-m5*16flznyc-8.8-480	Y	2	

Chassis electric systems



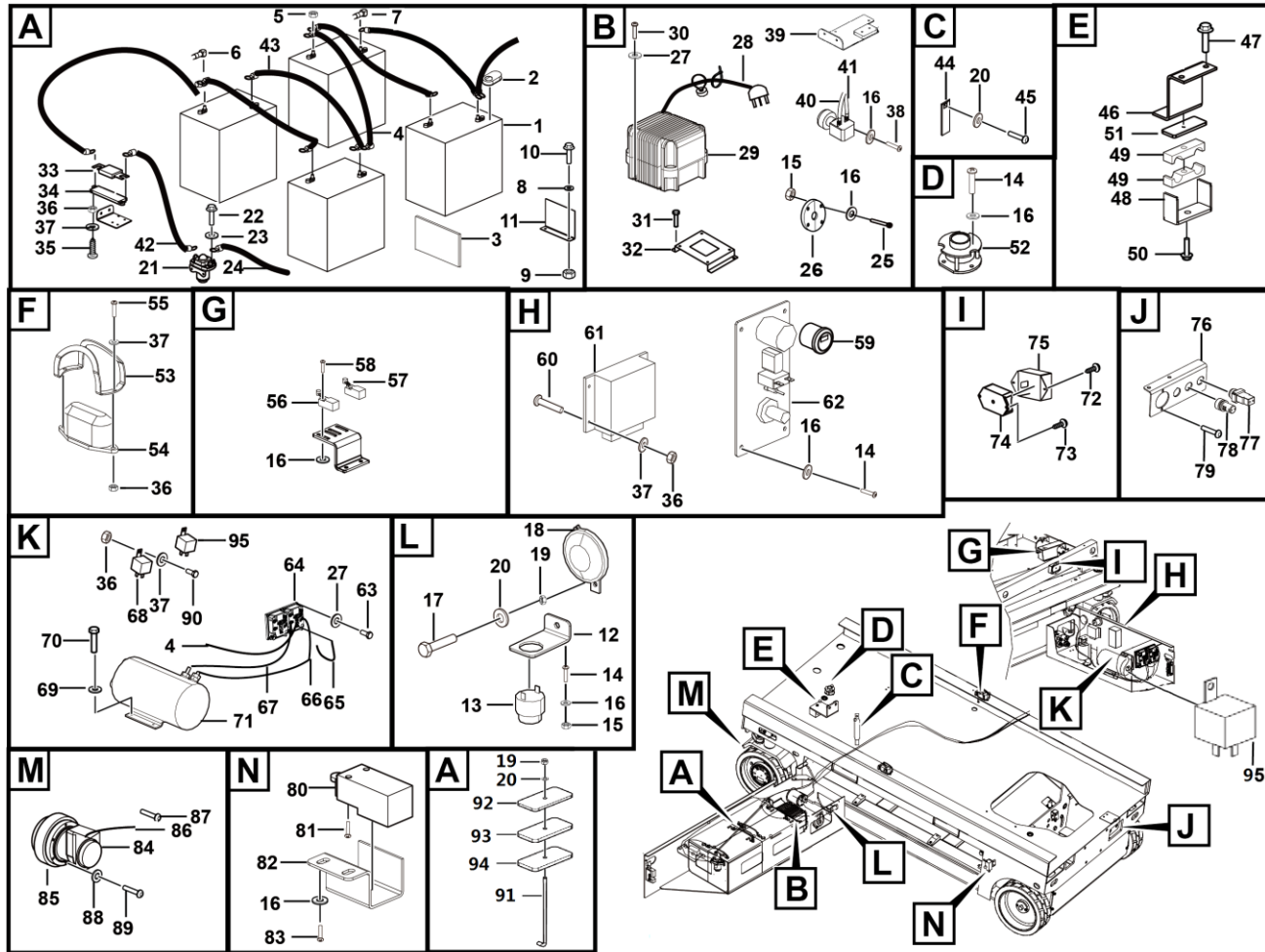
Key	Part No.	Description	Spare parts Y/N	Qty	Remarks
23	4015010345	Washer gb96.1-5flznyc-480	Y	2	
24	25320000652	Main contactor - battery	Y	1	
25	4014010386	Screw gb818-m5*20flznyc-4.8-480	Y	4	
26	25320002541	Nylon pad	Y	2	
27	4015010284	Washer gb97.1-6flznyc-480	Y	8	
28	25320005421	Cable	Y	1	
29	4130702292	Charger gpsc3024-lg-0x	Y	1	
30	4014010181	Screw gb70.1-m6*12flznyc-8.8-480	Y	16	
31	4011010757	Bolt gb16674-m6*20flznyc-8.8	Y	4	
32	25320013901	Plate	Y	1	
33	4130000836	Fuse 0298300 from littelfuse	Y	1	
34	4130000956	Fuse holder 02981001zxt	Y	1	
35	4014010121	Screw gb818-m4*20flznyc-4.8-480	Y	2	
36	4013010304	Nut gb6170-m4flznyc-8-480	Y	13	
37	4015010290	Washer gb97.1-4flznyc-480	Y	15	
38	4014010338	Screw gb70.3-m6*20flznyc-8.8-480	Y	2	
39	25320002191	Weldment, ce fuse fixed plate	Y	1	
40	25320023931	Wire	Y	1	
41	25320023941	Wire	Y	1	
42	4130702563	Wire	Y	1	
43	25320000742	Wire	Y	4	
44	25320002461	Conductive strip	Y	1	

Chassis electric systems



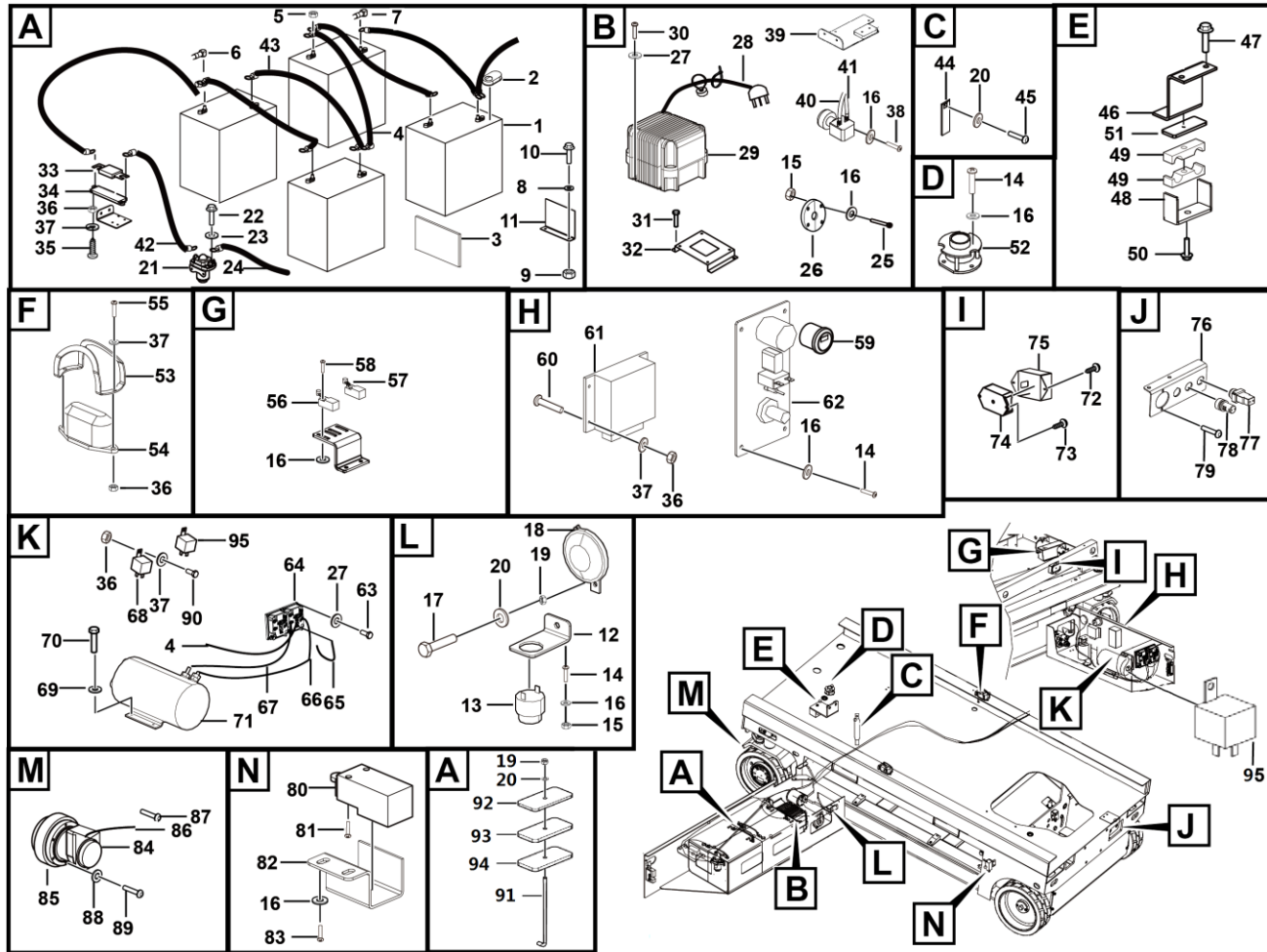
Key	Part No.	Description	Spare parts Y/N	Qty	Remarks
45	4011010746	Bolt gb5783-m8*12flznyc-8.8-480	Y	1	
46	25070000751	Plate	Y	1	
47	4011011017	Bolt gb16674-m8*30flznyc-8.8-480	Y	2	
48	25320003442	Forming (stamping, etc.), pressure plate,alternator harness	Y	1	
49	25320012201	Pipe	Y	2	
50	4011010753	Bolt gb5783-m8*45flznyc-8.8-480	Y	1	
51	25080000151	Pipe clamp2, for fixing hose	Y	1	
52	4130701488	Tilt switch	Y	1	
53	25320000192	Housing, operating indicator	Y	2	
54	4130000729	Operating indicator	Y	2	
55	4014010387	Screw gb818-m4*25flznyc-4.8-480	N	4	
56	4130001236	Switch	Y	1	
57	4130001237	Switch	Y	2	
58	4014010123	Screw gb70.1-m5*40flznyc-8.8-480	Y	6	
59	4130000726	Timetable	Y	1	
60	4014010126	Screw gb70.3-m4*16flznyc-8.8-480	Y	4	
61	4130704264	Ecu	Y	1	
62	25320024701	Ground control unit	N	1	
63	4014010132	Screw gb70.1-m6*20flznyc-8.8-480	Y	8	
64	4130701968	Motor controller	Y	2	
65	25320011952	Wire	Y	1	
66	25320016081	Wire	Y	1	

Chassis electric systems



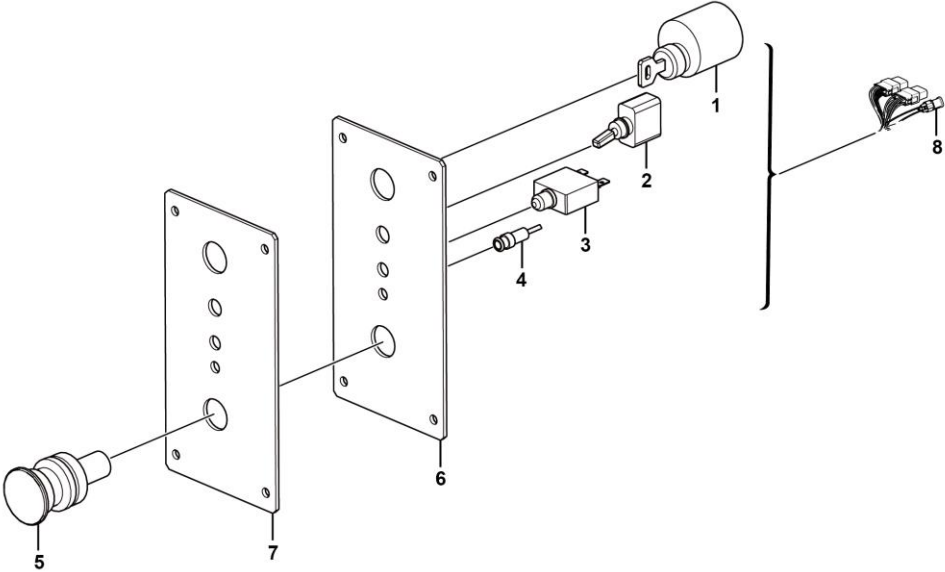
Key	Part No.	Description	Spare parts Y/N	Qty	Remarks
67	25320005972	Wire	Y	1	
68	4130000722	Relay	Y	2	
69	4015010289	Washer gb96.1-8flznyc-480	Y	4	
70	4011010424	Bolt 1/4-20unc-2b*18-10.9	Y	4	
71	4130001136	Machine	Y	1	
72	4014010124	Screw gb818-m4*6flznyc-4.8-480	Y	2	
73	4014010125	Screw gb818-m4*10flznyc-4.8-480	Y	2	
74	4130000734	Angle sensor sysa	Y	1	
75	25320000351	Weldment, angle sensor housing	Y	1	
76	25320017111	Plate	Y	1	
77	4130000723	Key switch (key code 4130000723001)	Y	1	
78	4130000866	Buzzer xb2bsbc	Y	1	
79	4011010993	Bolt gb16674-m10*20flznyc-8.8-480	Y	2	
80	4130000880	Limit switch cls-103	Y	2	
81	4014010353	Screwgb70.1-m5*45flznyc-8.8	Y	4	
82	25320000571	Forming (stamping, etc.), plate, protective travel switch	Y	2	
83	4014010113	Screw gb70.1-m5*25flznyc-8.8	Y	4	
84	4130702573	Motor	Y	2	
85	4130702574	Omini	Y	2	
86	25320018062	Wire	Y	2	
87	4011010513	Bolt 3/8-16unc-2b*32-10.9	Y	14	
88	4015010339	Washer gb97.1-10flznyc-300hv-480	Y	14	

Chassis electric systems

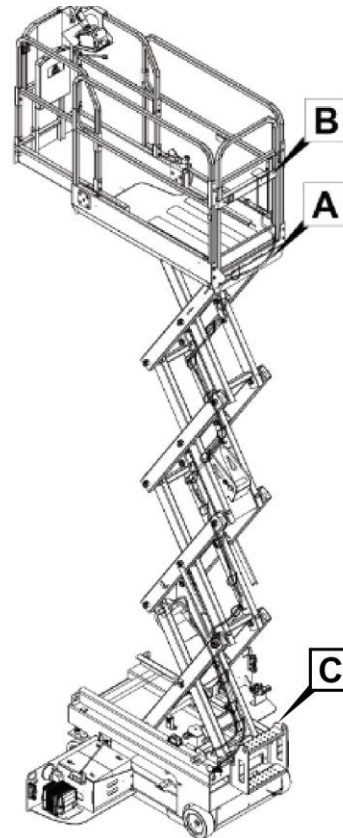
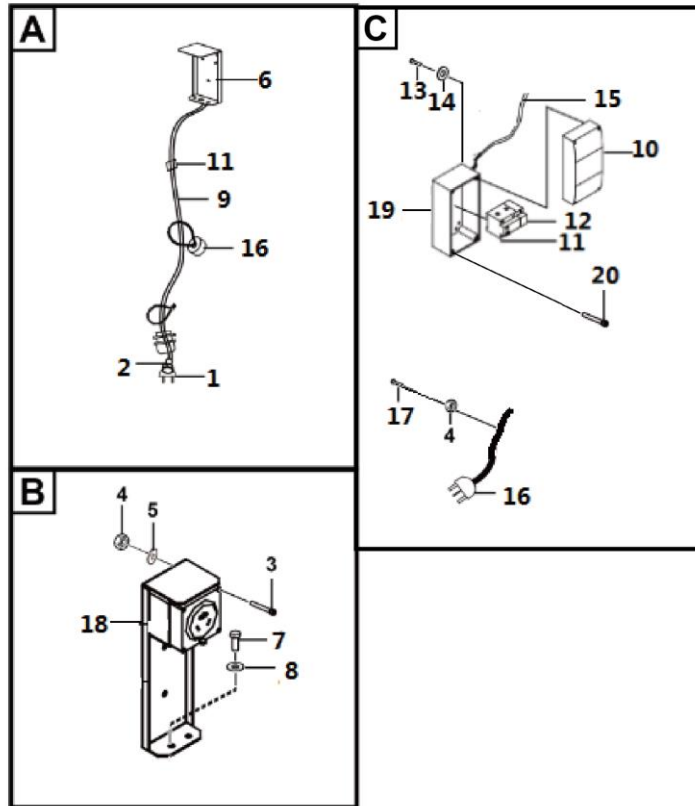


Key	Part No.	Description	Spare parts Y/N	Qty	Remarks
89	4011010754	Bolt gb16674-m6*12flznyc-8.8	Y	4	
90	4014010422	Screw gb70.1-m4*16flznyc-8.8-480	Y	3	
91	25180003392	Threaded rod, m8*25	Y	2	
92	25180002251	Plate	Y	2	
93	25180002241	Rubber plate	Y	2	
94	25180002181	Rubber clamp	Y	2	
95	4130702007	Delay relay	Y	1	

Ground control unit



Electric assembly



Key	Part No.	Description	Spare parts Y/N	Qty	Remarks
1	4130702374	Device plug	Y	1	
2	4130704275	Plug	Y	4	
3	4014010450	Screw gb818-m6*25flznyc-4.8	Y	4	
4	4013010300	Nut gb889.1-m6flznyc-8-480	Y	11	
5	4015010284	Washer gb97.1-6flznyc-480	Y	7	
6	25330006741	Ac plate	Y	1	
7	4011010746	Bolt gb5783-m8*12flznyc-8.8-480	Y	2	
8	4015010280	Washer gb97.1-8flznyc-480	Y	2	
9	25330011402	Wire	Y	1	
10	4130701803	Fuse box 56cb1-4n	Y	1	
11	4130701801	Circuit breaker ic65n	Y	1	
12	4130701802	Residual current operated protective accessory vigi ic65	Y	1	
13	4014010131	Screw gb70.1-m5*16flznyc-8.8-480	Y	4	
14	4015010283	Washer gb97.1-5flznyc-480	Y	4	
15	25330011411	Wire	Y	1	
16	4130702352	Plug	Y	1	
17	4014010132	Screw gb70.1-m6*20flznyc-8.8-480	Y	3	
18	25340018031	Label - warning, power to platform	N	1	
19	25330009711	Plate welding	Y	1	
20	4011000680	Bolt gb16674-m6*30epzn-8.8	Y	4	

